

Converting Colors

XYZ(47.7724, 47.5572, 52.0502)

Have a look what the booklet for
XYZ(47.7724, 47.5572, 52.0502)
contains.

XYZ(47.7978, 47.5712, 52.0103)	3
<i>Conversions</i>	4
<i>Details</i>	6
<i>Harmonies</i>	12
<i>Previews</i>	24
<i>Color Blindness Simulation</i>	28
<i>CSS Examples</i>	31

Color

**XYZ(47.7978, 47.5712,
52.0103)**

Conversions

Conversions Part 1

Format	Color
Hex	C5B3B8
RGB	197, 179, 184
RGB Percent	77%, 70%, 72%
CMY	0.2274, 0.2980, 0.2784
CMYK	0.00, 0.09, 0.07, 0.23
HSL	343°, 13%, 74%
HSV	343°, 9%, 77%
XYZ	47.7978, 47.5712, 52.0103
YIQ	184.9520, 9.1230, 5.3710

Conversions

Conversions Part 2

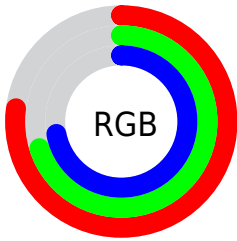
Format	Color
RYB	197, 179, 184
Decimal	12956600
CIELab	74.55, 7.29, -0.21
CIELCh	75, 7.298, 358.319
Yxy	47.5712, 0.3243, 0.3228
Android (android.graphics.Color)	4291146680 (0xFFC5B3B8)
YUV	184.9520, -0.4693, 10.5661
Hunter-Lab	68.9719, 3.0005, 3.5709

Details

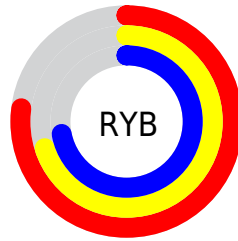
The XYZ color **47.7978, 47.5712, 52.0103** is a light color, and the websafe version is hex **CCCCCC**. A complement of this color would be **48.0729, 53.3233, 57.6306**, and the grayscale version is **46.0875, 48.4876, 52.8030**.

A 20% lighter version of the original color is **86.3096, 86.7788, 94.6390**, and **22.8853, 22.4000, 24.5902** is the 20% darker color. If you saturate the color by 10%, you get **42.7108, 39.6652, 43.3216**, and if you desaturate by 10%, it is **53.6016, 56.6695, 61.6796**.

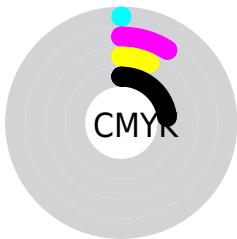
Distribution



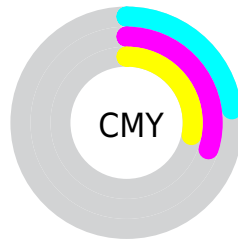
- Red (77%)
- Green (70%)
- Blue (72%)



- Red (77%)
- Yellow (70%)
- Blue (72%)



- Cyan (0%)
- Magenta (9%)
- Yellow (7%)
- Black (23%)



- Cyan (23%)
- Magenta (30%)
- Yellow (28%)

Brightness & Saturation Gradients

These gradients show how the XYZ color 47.7978, 47.5712, 52.0103 changes by changing the brightness by 10 percent. The first figure shows a shift by +10% for each color and the second figure -10%.

Similar to the brightness gradients but the following saturation gradients show a change of the XYZ color 47.7978, 47.5712, 52.0103 by changing the saturation by 10% instead.

■ 47.7978, 47.5712,
52.0103

■ 47.7978, 47.5712,
52.0103

368.5860,
377.0899, 411.4345

■ 33.8774, 33.4874,
36.6310

■ 86.1148, 86.5656,
94.5732

■ 22.9619, 22.5001,
24.6284

111.2421,
112.2451, 122.5938

■ 14.6859, 14.2248,
15.5839

140.8357,
142.5585, 155.6653

■ 8.6841, 8.2772,
9.0790

175.2610,
177.8904, 194.2062

■ 4.5912, 4.2728,
4.6953

214.8833,
218.6251, 238.6350

■ 2.0417, 1.8273,
2.0140

260.0680,

■ 0.6572, 0.5041,

265.1470, 289.3703

0.5639

311.1805,
317.8405, 346.8306

■ 0.0000, 0.0000,
0.0000

■ 47.7978, 47.5712,
52.0103

■ 47.7978, 47.5712,
52.0103

■ 42.7108, 39.6652,
43.3216

■ 53.6016, 56.6695,
61.6796

■ 38.3085, 32.8960,
35.5791

■ 60.1449, 67.0004,
72.3560

■ 34.5620, 27.2127,
28.7511

■ 67.4542, 78.6098,
84.0691

■ 31.4389, 22.5584,
22.8028

■ 74.6520, 89.7368,
96.5457

■ 28.9041, 18.8707,
17.6970

■ 76.8363, 90.6105,
108.0476

■ 26.9184, 16.0806,
13.3938

■ 25.4382, 14.1097,
9.8499

■ 24.4123, 12.8659,
7.0169

■ 23.7567, 12.1923,
4.8331

Harmonies

Analogous

The Analogous color harmony consists of three colors that are next to each other on the color wheel.



47.4078, 47.5712, 55.7061



47.7978, 47.5712, 52.0103



47.4846, 47.5712, 48.4271

Triad

The Triadic color harmony groups three colors that are evenly spaced from another and form a triangle on the color wheel.



47.7978, 47.5712, 52.0103



44.0225, 47.5712, 45.6622



43.8960, 47.5712, 58.2273

Complementary

The Complementary color scheme is a pair of colors which are on the opposite of each other on the color wheel.



47.7978, 47.5712, 52.0103



48.0729, 53.3233, 57.6306

Split Complementary

Split-complementary colors differ from the complementary color scheme. The scheme consists of three colors, the original color and two neighbors of the complement color.



43.0189, 47.5712, 55.3196



47.7978, 47.5712, 52.0103



43.0909, 47.5712, 48.0751

Square

The Square scheme is like the rectangle color scheme, but the four colors are evenly spaced on the color wheel.



47.7978, 47.5712, 52.0103



45.2894, 47.5712, 44.8705



42.7270, 47.5712, 51.5842



45.1406, 47.5712, 59.4019

Rectangle

The Rectangle color scheme consists of four colors that form a rectangle on the color wheel.



47.7978, 47.5712, 52.0103



46.9226, 47.5712, 46.5593



42.7270, 47.5712, 51.5842



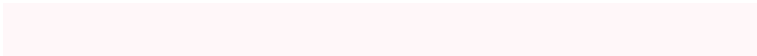
43.5493, 47.5712, 57.4134

Sweetspot

The Sweet Spot groups the original color and five complimentary colors.



47.7991, 47.5733, 52.0113



91.7808, 94.8650, 103.4840



47.9127, 47.4670, 59.4608



19.4623, 20.0186, 21.8460



0.0000, 0.0000, 0.0000



20.3446, 21.4041, 23.3091

Same Dimension

The Same Dimension uses a secret algorithm to generate beautiful new colors.



47.7991, 47.5733, 52.0113



83.6529, 82.1538, 89.8470



48.0771, 48.9527, 49.5652



10.7529, 10.6845, 11.6819



15.6249, 7.9995, 3.2346



0.7714, 0.3914, 0.3195

Inverse Universe

The Inverse Universe completely reimagines the original color for something new.



47.7991, 47.5733, 52.0113



83.6529, 82.1538, 89.8470



47.7622, 51.8005, 60.3052



10.7529, 10.6845, 11.6819



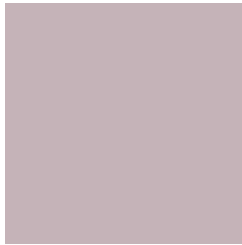
15.6249, 7.9995, 3.2346



0.7714, 0.3914, 0.3195

Previews

White Background



This preview shows how the XYZ color 47.7978, 47.5712, 52.0103 looks on a white background.

Color Contrast Check

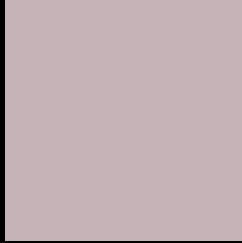
Large Text (above 18pt) WCAG AA × Fail

Any Text WCAG AA × Fail

Large Text (above 18pt) WCAG AAA × Fail

Any Text WCAG AAA × Fail

Black Background



This preview shows how the XYZ color 47.7978, 47.5712, 52.0103 looks on a black background.

Color Contrast Check

Large Text (above 18pt) WCAG AA ✓ Pass

Any Text WCAG AA ✓ Pass

Large Text (above 18pt) WCAG AAA ✓ Pass

Any Text WCAG AAA ✓ Pass

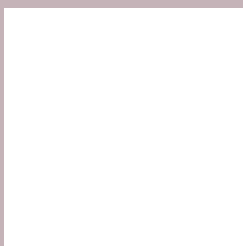
If you want to check with other color combinations, try the [Color Contrast Checker](#).

XYZ 47.7978, 47.5712, 52.0103

Background



This preview shows how black text looks on a background with the XYZ color 47.7978, 47.5712, 52.0103.



This preview shows how white text looks on a background with the XYZ color 47.7978, 47.5712,

Color Blindness Simulation

Color vision deficiency is a very complex topic, and I could not describe the different causes any better than Wikipedia does, so if you want to learn more, you should check out their [article about color blindness](#).

Dichromacy



Original Color

47.7978, 47.5712, 52.0103

Protanopia

46.0461, 47.8512, 53.2637

Deuteranopia

48.6595, 47.7190, 51.9935



Tritanopia

48.7235, 47.6523, 56.4990

Trichromacy



Original Color

47.7978, 47.5712, 52.0103

Protanomaly

46.7201, 47.9058, 52.6833

Deuteranomaly

48.3915, 47.5808, 51.9809

Tritanomaly

48.3944, 47.5207, 54.7659

Monochromacy



Original Color

47.7978, 47.5712, 52.0103

Achromatopsia

46.1135, 48.5150, 52.8328

Achromatomaly

46.6767, 48.1886, 52.7401

CSS Examples

Text

The CSS property to change the color of the text to XYZ 47.7978, 47.5712, 52.0103 is called "color". The color property can be set on classes, ids or directly on the HTML element.

This example shows how text in the color `rgb(197, 179, 184)` looks like.

```
.text, #text, p{  
    color:rgb(197, 179, 184)  
}
```

If you want to add a text shadow in that color use the text-shadow property, you can generate a text shadow directly with our [CSS Text Shadow Generator](#).

Here you see how black text with a 4 pixel rgb(197, 179, 184) colored shadow looks like.

```
.shadow{ text-shadow: 4px 4px 2px rgb(197, 179, 184) }
```

Border

The CSS property to change the border of an element to XYZ 47.7978, 47.5712, 52.0103 is called "border". The border property can be set on classes, ids or directly on the HTML element.

This example shows the color as border, it can be applied via the CSS property "border" or "border-color".

```
.border, #border, table{ border:4px solid rgb(197, 179, 184) }
```


If only the border color should be changed use the property `border-color`.

```
.border{ border-color:rgb(197, 179, 184) }
```

If you want to add a box shadow in that color use:

Here you see how a box with a 4 pixel `rgb(197, 179, 184)` colored shadow looks like.

```
.boxshadow{ -moz-box-shadow:4px 4px 4px  
4px rgb(197, 179, 184); -webkit-box-  
shadow:4px 4px 4px 4px rgb(197, 179, 184);  
box-shadow:4px 4px 4px 4px rgb(197, 179,  
184) }
```

Background

The CSS property to change the background color of an element to XYZ 47.7978, 47.5712, 52.0103 is called "background". The background property can be set on classes, ids or directly on the HTML element.

```
.background, #background, body{  
background: rgb(197, 179, 184) }
```

If only the background color should be changed can be used:

```
.background{ background-color: rgb(197,  
179, 184) }
```

This example shows the color as background, it is applied via the CSS property "background".

To optimize and compress your CSS code, you can use our [online CSS compressor and optimizer](#) based on csstidy. If you want to create a linear or radial gradient as background or border, check our [CSS Gradient Generator](#).

Hey! You found this booklet interesting? Support Converting Colors with the new Membership Option!

The pro membership hides all ads, plus gives you double the colors in the color bucket, and more awesome pro features!

[Learn more, Memberships starting at \\$2.50/m!](#)

**Follow me
on Twitter!**

@ConvertingColor