

Converting Colors

XYZ(47.7889, 47.8184, 47.4972)

Have a look what the booklet for
XYZ(47.7889, 47.8184, 47.4972)
contains.

| | |
|--|----|
| XYZ(47.8785, 48.0170, 47.3022) | 3 |
| <i>Conversions</i> | 4 |
| <i>Details</i> | 6 |
| <i>Harmonies</i> | 12 |
| <i>Previews</i> | 24 |
| <i>Color Blindness Simulation</i> | 28 |
| <i>CSS Examples</i> | 31 |

Color

**XYZ(47.8785, 48.0170,
47.3022)**

Conversions

Conversions Part 1

| Format | Color |
|-------------|---------------------------|
| Hex | C8B4AF |
| RGB | 200, 180, 175 |
| RGB Percent | 78%, 71%, 69% |
| CMY | 0.2157, 0.2941, 0.3137 |
| CMYK | 0.00, 0.10, 0.12, 0.22 |
| HSL | 12°, 19%, 74% |
| HSV | 12°, 12%, 78% |
| XYZ | 47.8785, 48.0170, 47.3022 |
| YIQ | 185.4100, 13.5250, 2.6850 |

Conversions

Conversions Part 2

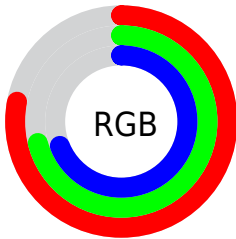
| Format | Color |
|-------------------------------------|-------------------------------|
| R _Y B | 200, 181, 175 |
| Decimal | 13153455 |
| CIE Lab | 74.84, 6.30, 5.14 |
| CIE LCh | 75, 8.133, 39.194 |
| Yxy | 48.0170, 0.3344, 0.3353 |
| Android (android.graphics.Color) | 4291343535 (0xFFC8B4AF) |
| YUV | 185.4100, -5.1321, 12.7954 |
| Hunter-Lab | 69.2943, 2.0685, 8.0330 |

Details

The XYZ color **47.8785, 48.0170, 47.3022** is a light color, and the websafe version is hex **CCCCCC**. A complement of this color would be **47.6194, 52.3132, 62.2316**, and the grayscale version is **46.3659, 48.7806, 53.1220**.

A 20% lighter version of the original color is **85.5184, 86.9641, 87.1414**, and **23.0186, 22.7198, 21.9110** is the 20% darker color. If you saturate the color by 10%, you get **43.0129, 41.1997, 36.6962**, and if you desaturate by 10%, it is **53.4105, 55.7004, 59.5668**.

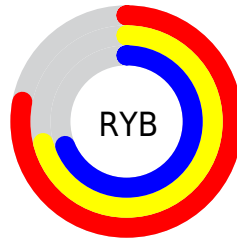
Distribution



Red (78%)

Green (71%)

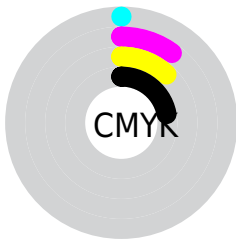
Blue (69%)



Red (78%)

Yellow (71%)

Blue (69%)

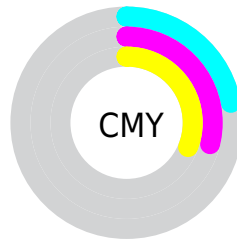


Cyan (0%)

Magenta (10%)

Yellow (12%)

Black (22%)



Cyan (22%)


Magenta (29%)


Yellow (31%)

Brightness & Saturation Gradients

These gradients show how the XYZ color 47.8785, 48.0170, 47.3022 changes by changing the brightness by 10 percent. The first figure shows a shift by +10% for each color and the second figure -10%.


Similar to the brightness gradients but the following saturation gradients show a change of the XYZ color 47.8785, 48.0170, 47.3022 by changing the saturation by 10% instead.

 47.8785, 48.0170,
47.3022

 47.8785, 48.0170,
47.3022


368.9009,
378.8595, 392.4481

 33.9415, 33.8403,
32.9186


 86.2343, 87.2297,
87.5192

 23.0114, 22.7710,
21.7935


111.3838,
113.0346, 114.1897

 14.7226, 14.4245,
13.5084


141.0015,
143.4843, 145.7929

 8.7100, 8.4165,
7.6447

175.4528,
178.9632, 182.7473

 4.6081, 4.3626,
3.7840

215.1031,
219.8559, 225.4715

 2.0516, 1.8784,
1.5076

260.3176,

 0.6627, 0.5353,

266.5465, 274.3840

0.2236

311.4618,
319.4196, 329.9034

■ 0.0000, 0.0000,
0.0000

■ 47.8785, 48.0170,
47.3022

■ 47.8785, 48.0170,
47.3022

■ 43.0129, 41.1997,
36.6962

■ 53.4105, 55.7004,
59.5668

■ 38.7844, 35.2119,
27.6745

■ 59.6288, 64.2724,
73.5540

■ 35.1673, 30.0235,
20.1616

■ 66.5576, 73.7624,
89.3281

■ 32.1325, 25.6002,
14.0745

■ 74.2183, 84.1968,
106.9476

■ 29.6486, 21.9055,
9.3223

■ 77.6296, 91.0194,
108.0847

■ 27.6812, 18.8994,
5.8035

■ 26.1916, 16.5381,
3.4019

■ 25.1351, 14.7724,
1.9786

■ 24.5794, 13.7990,
1.3680

Harmonies

Analogous

The Analogous color harmony consists of three colors that are next to each other on the color wheel.



48.5041, 48.0170, 50.9917



47.8785, 48.0170, 47.3022



46.6564, 48.0170, 45.0321

Triad

The Triadic color harmony groups three colors that are evenly spaced from another and form a triangle on the color wheel.



47.8785, 48.0170, 47.3022



43.0315, 48.0170, 49.4423



46.0946, 48.0170, 60.7419

Complementary

The Complementary color scheme is a pair of colors which are on the opposite of each other on the color wheel.



47.8785, 48.0170, 47.3022



47.6194, 52.3132, 62.2316

Split Complementary

Split-complementary colors differ from the complementary color scheme. The scheme consists of three colors, the original color and two neighbors of the complement color.



44.6360, 48.0170, 60.2718



47.8785, 48.0170, 47.3022



42.8884, 48.0170, 53.5946

Square

The Square scheme is like the rectangle color scheme, but the four colors are evenly spaced on the color wheel.



47.8785, 48.0170, 47.3022



43.8649, 48.0170, 46.2206



43.4699, 48.0170, 57.6003



47.4597, 48.0170, 58.8522

Rectangle

The Rectangle color scheme consists of four colors that form a rectangle on the color wheel.



47.8785, 48.0170, 47.3022



45.6787, 48.0170, 44.5538



43.4699, 48.0170, 57.6003



45.5987, 48.0170, 60.8567

Sweetspot

The Sweet Spot groups the original color and five complimentary colors.



47.8798, 48.0191, 47.3032



90.9032, 94.2650, 99.6301



49.0002, 46.8801, 58.0964



19.2948, 19.9518, 20.9635



0.0000, 0.0000, 0.0000



20.3446, 21.4041, 23.3091

Same Dimension

The Same Dimension uses a secret algorithm to generate beautiful new colors.



47.8798, 48.0191, 47.3032



80.4967, 79.7863, 76.6330



50.5174, 53.2943, 48.1824



10.8029, 10.9750, 11.1118



15.6798, 8.8768, 0.8870



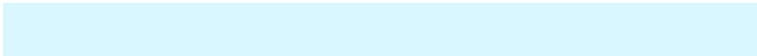
0.7947, 0.5248, 0.0594

Inverse Universe

The Inverse Universe completely reimagines the original color for something new.



47.6194, 52.3132, 62.2316



79.9572, 88.6658, 107.5078



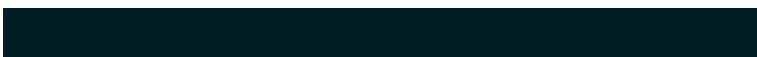
44.9357, 46.9458, 61.3371



10.7594, 11.6930, 13.6074



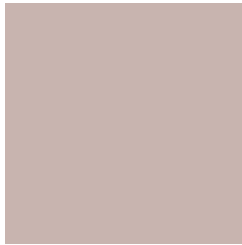
14.6829, 18.7598, 37.5915



0.7424, 0.9826, 1.7957

Previews

White Background



This preview shows how the XYZ color 47.8785, 48.0170, 47.3022 looks on a white background.

Color Contrast Check

Large Text (above 18pt) WCAG AA × Fail

Any Text WCAG AA × Fail

Large Text (above 18pt) WCAG AAA × Fail

Any Text WCAG AAA × Fail

Black Background



This preview shows how the XYZ color 47.8785, 48.0170, 47.3022 looks on a black background.

Color Contrast Check

Large Text (above 18pt) WCAG AA ✓ Pass

Any Text WCAG AA ✓ Pass

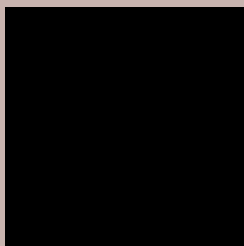
Large Text (above 18pt) WCAG AAA ✓ Pass

Any Text WCAG AAA ✓ Pass

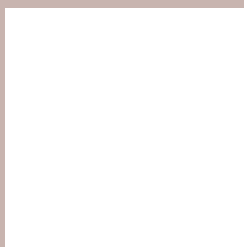
If you want to check with other color combinations, try the [Color Contrast Checker](#).

XYZ 47.8785, 48.0170, 47.3022

Background



This preview shows how black text looks on a background with the XYZ color 47.8785, 48.0170, 47.3022.



This preview shows how white text looks on a background with the XYZ color 47.8785, 48.0170,

Color Blindness Simulation

Color vision deficiency is a very complex topic, and I could not describe the different causes any better than Wikipedia does, so if you want to learn more, you should check out their [article about color blindness](#).

Dichromacy



Original Color

47.8785, 48.0170, 47.3022

Protanopia

45.8556, 47.8601, 48.4161

Deuteranopia

48.8351, 47.9151, 47.2321



Tritanopia

49.6815, 48.1589, 55.9673

Trichromacy



Original Color

47.8785, 48.0170, 47.3022

Protanomaly

46.5567, 47.9279, 47.8715

Deuteranomaly

48.4866, 48.0319, 47.2730

Tritanomaly

48.9644, 48.1605, 52.6141

Monochromacy



Original Color

47.8785, 48.0170, 47.3022

Achromatopsia

46.1135, 48.5150, 52.8328

Achromatomaly

46.5092, 48.1503, 50.5587

CSS Examples

Text

The CSS property to change the color of the text to XYZ 47.8785, 48.0170, 47.3022 is called "color". The color property can be set on classes, ids or directly on the HTML element.

This example shows how text in the color rgb(200, 180, 175) looks like.

```
.text, #text, p{  
    color:rgb(200, 180, 175)  
}
```

If you want to add a text shadow in that color use the text-shadow property, you can generate a text shadow directly with our [CSS Text Shadow Generator](#).

Here you see how black text with a 4 pixel rgb(200, 180, 175) colored shadow looks like.

```
.shadow{ text-shadow: 4px 4px 2px rgb(200, 180, 175) }
```

Border

The CSS property to change the border of an element to XYZ 47.8785, 48.0170, 47.3022 is called "border". The border property can be set on classes, ids or directly on the HTML element.

This example shows the color as border, it can be applied via the CSS property "border" or "border-color".

```
.border, #border, table{ border:4px solid rgb(200, 180, 175) }
```


If only the border color should be changed use the property `border-color`.

```
.border{ border-color:rgb(200, 180, 175) }
```

If you want to add a box shadow in that color use:

Here you see how a box with a 4 pixel `rgb(200, 180, 175)` colored shadow looks like.

```
.boxshadow{ -moz-box-shadow:4px 4px 4px  
4px rgb(200, 180, 175); -webkit-box-  
shadow:4px 4px 4px 4px rgb(200, 180, 175);  
box-shadow:4px 4px 4px 4px rgb(200, 180,  
175) }
```

Background

The CSS property to change the background color of an element to XYZ 47.8785, 48.0170, 47.3022 is called "background". The background property can be set on classes, ids or directly on the HTML element.

```
.background, #background, body{  
background: rgb(200, 180, 175) }
```

If only the background color should be changed can be used:

```
.background{ background-color: rgb(200,  
180, 175) }
```

This example shows the color as background, it is applied via the CSS property "background".

To optimize and compress your CSS code, you can use our [online CSS compressor and optimizer](#) based on csstidy. If you want to create a linear or radial gradient as background or border, check our [CSS Gradient Generator](#).

Hey! You found this booklet interesting? Support Converting Colors with the new Membership Option!

The pro membership hides all ads, plus gives you double the colors in the color bucket, and more awesome pro features!

[Learn more, Memberships starting at \\$2.50/m!](#)

**Follow me
on Twitter!**

@ConvertingColor