

Converting Colors

XYZ(47.8173, 39.0187, 43.3801)

Have a look what the booklet for
XYZ(47.8173, 39.0187, 43.3801)
contains.

XYZ(47.7538, 39.0276, 43.5443)	3
<i>Conversions</i>	4
<i>Details</i>	6
<i>Harmonies</i>	12
<i>Previews</i>	24
<i>Color Blindness Simulation</i>	28
<i>CSS Examples</i>	31

Color

**XYZ(47.7538, 39.0276,
43.5443)**

Conversions

Conversions Part 1

Format	Color
Hex	DE92AB
RGB	222, 146, 171
RGB Percent	87%, 57%, 67%
CMY	0.1294, 0.4274, 0.3294
CMYK	0.00, 0.34, 0.23, 0.13
HSL	340°, 54%, 72%
HSV	340°, 34%, 87%
XYZ	47.7538, 39.0276, 43.5443
YIQ	171.5740, 37.2710, 23.8870

Conversions

Conversions Part 2

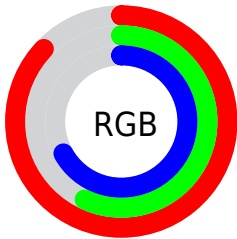
Format	Color
R _Y B	222, 146, 171
Decimal	14586539
CIE Lab	68.77, 32.10, -1.19
CIE LCh	69, 32.119, 357.870
Yxy	39.0276, 0.3664, 0.2995
Android (android.graphics.Color)	4292776619 (0xFFDE92AB)
YUV	171.5740, -0.2830, 44.2236
Hunter-Lab	62.4721, 27.1197, 2.4041

Details

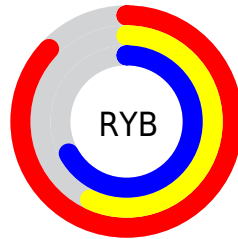
The XYZ color **47.7538, 39.0276, 43.5443** is a light color, and the websafe version is hex **CC9999**. A complement of this color would be **48.0551, 62.3858, 62.3352**, and the grayscale version is **38.9867, 41.0170, 44.6675**.

A 20% lighter version of the original color is **75.8541, 68.5243, 81.1801**, and **22.8495, 17.3366, 19.5948** is the 20% darker color. If you saturate the color by 10%, you get **43.3171, 32.3000, 35.4496**, and if you desaturate by 10%, it is **53.0172, 47.1518, 52.7051**.

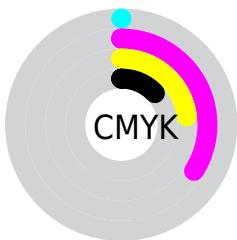
Distribution



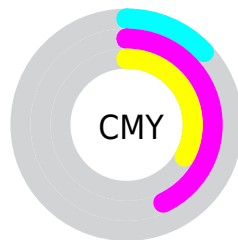
- Red (87%)
- Green (57%)
- Blue (67%)



- Red (87%)
- Yellow (57%)
- Blue (67%)



- Cyan (0%)
- Magenta (34%)
- Yellow (23%)
- Black (13%)



- Cyan (13%)
- Magenta (43%)
- Yellow (33%)

Brightness & Saturation Gradients

These gradients show how the XYZ color 47.7538, 39.0276, 43.5443 changes by changing the brightness by 10 percent. The first figure shows a shift by +10% for each color and the second figure -10%.

Similar to the brightness gradients but the following saturation gradients show a change of the XYZ color 47.7538, 39.0276, 43.5443 by changing the saturation by 10% instead.

47.7538, 39.0276,
43.5443

47.7538, 39.0276,
43.5443

368.4143,
342.0078, 376.8322

33.8424, 26.7812,
29.9779

86.0496, 73.6805,
81.8267

22.9349, 17.4090,
19.5699

111.1648, 96.8557,
107.3798

14.6659, 10.5265,
11.9018

140.7452,
124.4428, 137.7655

8.6700, 5.7494,
6.5551

175.1563,
156.8259, 173.4024

4.5819, 2.6933,
3.1113

214.7634,
194.3896, 214.7089

2.0363, 0.9738,
1.1517

259.9319,

0.6542, 0.0000,

237.5182, 262.1037

0.0000

311.0270,
286.5962, 316.0053

■ 0.0000, 0.0000,
0.0000

■ 47.7538, 39.0276,
43.5443

■ 47.7538, 39.0276,
43.5443

■ 43.3171, 32.3000,
35.4496

■ 53.0172, 47.1518,
52.7051

■ 39.6600, 26.8842,
28.3781

■ 59.1446, 56.7400,
62.9682

■ 36.7354, 22.6946,
22.2868

■ 66.1749, 67.8622,
74.3706

■ 34.4895, 19.6330,
17.1288

■ 74.1436, 80.5817,
86.9470

■ 32.8605, 17.5860,
12.8523

■ 82.4411, 93.6724,
100.5161

■ 31.7741, 16.4159,
9.3993

■ 83.9344, 94.2697,
108.3798

■ 31.3276, 16.0110,
7.7458

Harmonies

Analogous

The Analogous color harmony consists of three colors that are next to each other on the color wheel.



46.0105, 39.0276, 59.2036



47.7538, 39.0276, 43.5443



46.4315, 39.0276, 30.6975

Triad

The Triadic color harmony groups three colors that are evenly spaced from another and form a triangle on the color wheel.



47.7538, 39.0276, 43.5443



32.7071, 39.0276, 22.2282



32.1314, 39.0276, 70.9080

Complementary

The Complementary color scheme is a pair of colors which are on the opposite of each other on the color wheel.



47.7538, 39.0276, 43.5443



48.0551, 62.3858, 62.3352

Split Complementary

Split-complementary colors differ from the complementary color scheme. The scheme consists of three colors, the original color and two neighbors of the complement color.



29.1016, 39.0276, 56.9820



47.7538, 39.0276, 43.5443



29.4120, 39.0276, 29.2682

Square

The Square scheme is like the rectangle color scheme, but the four colors are evenly spaced on the color wheel.



47.7538, 39.0276, 43.5443



37.4594, 39.0276, 20.1964



28.1527, 39.0276, 41.4616



36.7321, 39.0276, 77.0886

Rectangle

The Rectangle color scheme consists of four colors that form a rectangle on the color wheel.



47.7538, 39.0276, 43.5443



44.0512, 39.0276, 24.9198



28.1527, 39.0276, 41.4616



30.9119, 39.0276, 66.8413

Sweetspot

The Sweet Spot groups the original color and five complimentary colors.



47.7549, 39.0294, 43.5451



84.8139, 83.7421, 92.4958



46.4040, 37.6591, 73.9309



17.8679, 17.4729, 19.3322



0.0000, 0.0000, 0.0000



20.3446, 21.4041, 23.3091

Same Dimension

The Same Dimension uses a secret algorithm to generate beautiful new colors.



47.7549, 39.0294, 43.5451



60.9581, 46.7125, 51.6127



47.6548, 42.2885, 32.8471



13.8922, 13.7745, 15.2025



18.6537, 9.5285, 4.8419



1.3333, 0.6766, 0.5480

Inverse Universe

The Inverse Universe completely reimagines the original color for something new.



47.7549, 39.0294, 43.5451



60.9581, 46.7125, 51.6127



47.9226, 57.1508, 77.6131



13.8922, 13.7745, 15.2025



18.6537, 9.5285, 4.8419



1.3333, 0.6766, 0.5480

Previews

White Background



This preview shows how the XYZ color 47.7538, 39.0276, 43.5443 looks on a white background.

Color Contrast Check

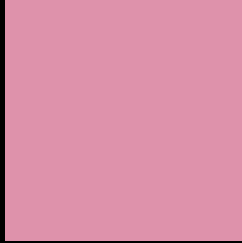
Large Text (above 18pt) WCAG AA × Fail

Any Text WCAG AA × Fail

Large Text (above 18pt) WCAG AAA × Fail

Any Text WCAG AAA × Fail

Black Background



This preview shows how the XYZ color 47.7538, 39.0276, 43.5443 looks on a black background.

Color Contrast Check

Large Text (above 18pt) WCAG AA ✓ Pass

Any Text WCAG AA ✓ Pass

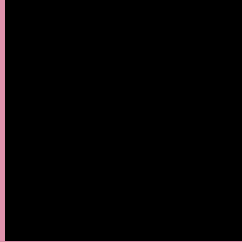
Large Text (above 18pt) WCAG AAA ✓ Pass

Any Text WCAG AAA ✓ Pass

If you want to check with other color combinations, try the [Color Contrast Checker](#).

XYZ 47.7538, 39.0276, 43.5443

Background



This preview shows how black text looks on a background with the XYZ color 47.7538, 39.0276, 43.5443.



This preview shows how white text looks on a background with the XYZ color 47.7538, 39.0276,

Color Blindness Simulation

Color vision deficiency is a very complex topic, and I could not describe the different causes any better than Wikipedia does, so if you want to learn more, you should check out their [article about color blindness](#).

Dichromacy



Original Color

47.7538, 39.0276, 43.5443

Protanopia

38.4068, 39.3136, 50.9114

Deuteranopia

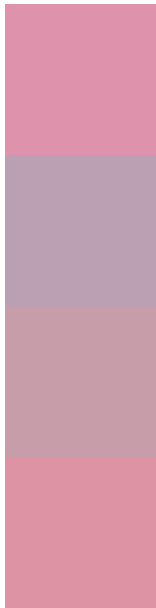
39.9322, 39.2119, 42.5098



Tritanopia

46.6667, 39.0552, 37.8797

Trichromacy



Original Color

47.7538, 39.0276, 43.5443

Protanomaly

41.0283, 38.6157, 47.9390

Deuteranomaly

42.5071, 38.9843, 42.8205

Tritanomaly

46.8634, 38.8839, 39.6857

Monochromacy



Original Color

47.7538, 39.0276, 43.5443

Achromatopsia

39.2122, 41.2543, 44.9259

Achromatomaly

41.7788, 40.1201, 44.5717

CSS Examples

Text

The CSS property to change the color of the text to XYZ 47.7538, 39.0276, 43.5443 is called "color". The color property can be set on classes, ids or directly on the HTML element.

This example shows how text in the color `rgb(222, 146, 171)` looks like.

```
.text, #text, p{  
    color:rgb(222, 146, 171)  
}
```

If you want to add a text shadow in that color use the text-shadow property, you can generate a text shadow directly with our [CSS Text Shadow Generator](#).

Here you see how black text with a 4 pixel rgb(222, 146, 171) colored shadow looks like.

```
.shadow{ text-shadow: 4px 4px 2px rgb(222, 146, 171) }
```

Border

The CSS property to change the border of an element to XYZ 47.7538, 39.0276, 43.5443 is called "border". The border property can be set on classes, ids or directly on the HTML element.

This example shows the color as border, it can be applied via the CSS property "border" or "border-color".

```
.border, #border, table{ border:4px solid rgb(222, 146, 171) }
```


If only the border color should be changed use the property `border-color`.

```
.border{ border-color:rgb(222, 146, 171) }
```

If you want to add a box shadow in that color use:

Here you see how a box with a 4 pixel `rgb(222, 146, 171)` colored shadow looks like.

```
.boxshadow{ -moz-box-shadow:4px 4px 4px  
4px rgb(222, 146, 171); -webkit-box-  
shadow:4px 4px 4px 4px rgb(222, 146, 171);  
box-shadow:4px 4px 4px 4px rgb(222, 146,  
171) }
```

Background

The CSS property to change the background color of an element to XYZ 47.7538, 39.0276, 43.5443 is called "background". The background property can be set on classes, ids or directly on the HTML element.

```
.background, #background, body{  
background: rgb(222, 146, 171) }
```

If only the background color should be changed can be used:

```
.background{ background-color: rgb(222,  
146, 171) }
```

This example shows the color as background, it is applied via the CSS property "background".

To optimize and compress your CSS code, you can use our [online CSS compressor and optimizer](#) based on csstidy. If you want to create a linear or radial gradient as background or border, check our [CSS Gradient Generator](#).

Hey! You found this booklet interesting? Support Converting Colors with the new Membership Option!

The pro membership hides all ads, plus gives you double the colors in the color bucket, and more awesome pro features!

[Learn more, Memberships starting at \\$2.50/m!](#)

**Follow me
on Twitter!**

@ConvertingColor