

Converting Colors

XYZ(47.8766, 48.7291, 42.4796)

Have a look what the booklet for
XYZ(47.8766, 48.7291, 42.4796)
contains.

XYZ(47.8766, 48.7291, 42.4796)	3
<i>Conversions</i>	4
<i>Details</i>	6
<i>Harmonies</i>	12
<i>Previews</i>	24
<i>Color Blindness Simulation</i>	28
<i>CSS Examples</i>	31

Color

**XYZ(47.8766, 48.7291,
42.4796)**

Conversions

Conversions Part 1

Format	Color
Hex	CAB6A5
RGB	202, 182, 165
RGB Percent	79%, 71%, 65%
CMY	0.2078, 0.2863, 0.3529
CMYK	0.00, 0.10, 0.18, 0.21
HSL	28°, 26%, 72%
HSV	28°, 18%, 79%
XYZ	47.8766, 48.7291, 42.4796
YIQ	186.0420, 17.3770, -1.0470

Conversions

Conversions Part 2

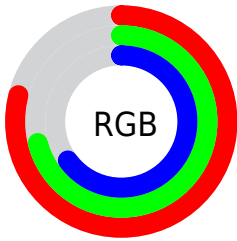
Format	Color
R _Y B	202, 196, 165
Decimal	13285029
CIE Lab	75.28, 4.37, 11.24
CIE LCh	75, 12.063, 68.752
Yxy	48.7291, 0.3442, 0.3504
Android (android.graphics.Color)	4291475109 (0xFFCAB6A5)
YUV	186.0420, -10.3737, 13.9952
Hunter-Lab	69.8062, 0.2633, 12.7843

Details

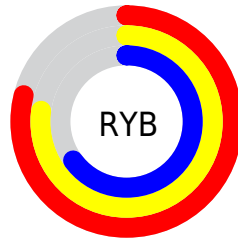
The XYZ color **47.8766, 48.7291, 42.4796** is a light color, and the websafe version is hex **CCCCCC**. A complement of this color would be **43.5264, 46.9604, 62.6476**, and the grayscale version is **46.7462, 49.1807, 53.5577**.

A 20% lighter version of the original color is **84.7328, 87.5764, 80.1482**, and **23.0436, 23.1887, 18.8841** is the 20% darker color. If you saturate the color by 10%, you get **44.0324, 43.7541, 32.8325**, and if you desaturate by 10%, it is **52.1882, 54.1733, 53.7164**.

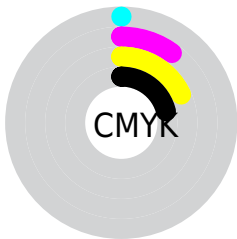
Distribution



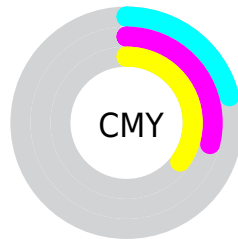
- Red (79%)
- Green (71%)
- Blue (65%)



- Red (79%)
- Yellow (77%)
- Blue (65%)



- Cyan (0%)
- Magenta (10%)
- Yellow (18%)
- Black (21%)




- Cyan (21%)
- Magenta (29%)
- Yellow (35%)

Brightness & Saturation Gradients


These gradients show how the XYZ color 47.8766, 48.7291, 42.4796 changes by changing the brightness by 10 percent. The first figure shows a shift by +10% for each color and the second figure -10%.

Similar to the brightness gradients but the following saturation gradients show a change of the XYZ color 47.8766, 48.7291, 42.4796 by changing the saturation by 10% instead.


 47.8766, 48.7291,
42.4796


 47.8766, 48.7291,
42.4796


368.8935,
381.6749, 372.3254

 33.9400, 34.4046,
29.1486


 86.2315, 88.2890,
80.2029

 23.0102, 23.2046,
18.9467


 111.3804,
114.2932, 105.4323

 14.7218, 14.7447,
11.4554


140.9976,
144.9594, 135.4649

 8.7094, 8.6404,
6.2560

175.4483,
180.6721, 170.7193

 4.6077, 4.5074,
2.9301

215.0979,
221.8155, 211.6140

 2.0514, 1.9612,
1.0590

260.3117,

 0.6626, 0.5848,

268.7742, 258.5676

0.0000

311.4551,
321.9326, 311.9985

0.0000, 0.0000,
0.0000

47.8766, 48.7291,
42.4796

47.8766, 48.7291,
42.4796

44.0324, 43.7541,
32.8325

52.1882, 54.1733,
53.7164

40.6341, 39.2283,
24.6989

56.9797, 60.0928,
66.6080

37.6642, 35.1400,
18.0014

62.2682, 66.5021,
81.2195

35.1025, 31.4741,
12.6539

68.0686, 73.4127,
97.6117

32.9266, 28.2147,
8.5612

72.5725, 80.1070,
106.2450

■ 31.1119, 25.3445,
5.6155

■ 75.8228, 86.6076,
107.3284

■ 29.6297, 22.8443,
3.6903

■ 78.1673, 91.2966,
108.1099

■ 28.4386, 20.6894,
2.5922

■ 28.2570, 20.3561,
2.4398

Harmonies

Analogous

The Analogous color harmony consists of three colors that are next to each other on the color wheel.



49.7178, 48.7291, 45.7813



47.8766, 48.7291, 42.4796



45.6703, 48.7291, 41.8898

Triad

The Triadic color harmony groups three colors that are evenly spaced from another and form a triangle on the color wheel.



47.8766, 48.7291, 42.4796



42.2314, 48.7291, 54.9359



49.0337, 48.7291, 63.1524

Complementary

The Complementary color scheme is a pair of colors which are on the opposite of each other on the color wheel.



47.8766, 48.7291, 42.4796



43.5264, 46.9604, 62.6476

Split Complementary

Split-complementary colors differ from the complementary color scheme. The scheme consists of three colors, the original color and two neighbors of the complement color.



46.9668, 48.7291, 66.0526



47.8766, 48.7291, 42.4796



43.0721, 48.7291, 61.0669

Square

The Square scheme is like the rectangle color scheme, but the four colors are evenly spaced on the color wheel.



47.8766, 48.7291, 42.4796



42.4575, 48.7291, 48.7580



44.7888, 48.7291, 65.2605



50.4005, 48.7291, 57.6031

Rectangle

The Rectangle color scheme consists of four colors that form a rectangle on the color wheel.



47.8766, 48.7291, 42.4796



44.2964, 48.7291, 43.0642



44.7888, 48.7291, 65.2605



48.3951, 48.7291, 64.4888

Sweetspot

The Sweet Spot groups the original color and five complimentary colors.



47.8779, 48.7313, 42.4806



90.9057, 94.8880, 97.7254



46.6067, 42.9850, 51.9339



19.3365, 20.1598, 20.5937



0.0000, 0.0000, 0.0000



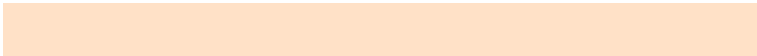
20.3446, 21.4041, 23.3091

Same Dimension

The Same Dimension uses a secret algorithm to generate beautiful new colors.



47.8779, 48.7313, 42.4806



78.3765, 79.0575, 65.1007



51.8381, 56.6516, 43.8007



11.6300, 12.0490, 11.7922



18.2700, 13.2729, 1.5990



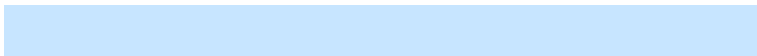
1.0181, 0.8359, 0.1077

Inverse Universe

The Inverse Universe completely reimagines the original color for something new.



43.5264, 46.9604, 62.6476



69.6564, 75.5078, 105.5109



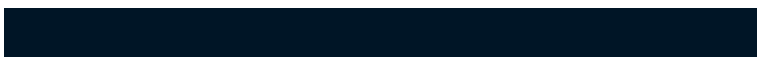
39.9696, 39.8468, 61.4620



11.0956, 11.8316, 14.2693



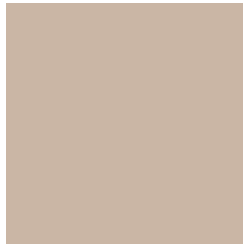
10.4805, 9.9850, 37.3312



0.6161, 0.6659, 1.9510

Previews

White Background



This preview shows how the XYZ color 47.8766, 48.7291, 42.4796 looks on a white background.

Color Contrast Check

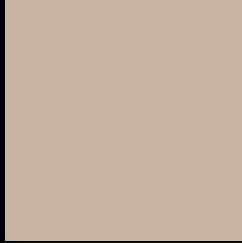
Large Text (above 18pt) WCAG AA × Fail

Any Text WCAG AA × Fail

Large Text (above 18pt) WCAG AAA × Fail

Any Text WCAG AAA × Fail

Black Background



This preview shows how the XYZ color 47.8766, 48.7291, 42.4796 looks on a black background.

Color Contrast Check

Large Text (above 18pt) WCAG AA ✓ Pass

Any Text WCAG AA ✓ Pass

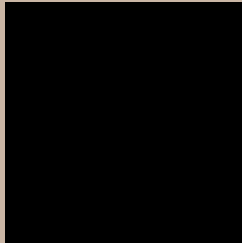
Large Text (above 18pt) WCAG AAA ✓ Pass

Any Text WCAG AAA ✓ Pass

If you want to check with other color combinations, try the [Color Contrast Checker](#).

XYZ 47.8766, 48.7291, 42.4796

Background



This preview shows how black text looks on a background with the XYZ color 47.8766, 48.7291, 42.4796.



This preview shows how white text looks on a background with the XYZ color 47.8766, 48.7291,

42.4796.

Color Blindness Simulation

Color vision deficiency is a very complex topic, and I could not describe the different causes any better than Wikipedia does, so if you want to learn more, you should check out their [article about color blindness](#).

Dichromacy



Original Color

47.8766, 48.7291, 42.4796

Protanopia

46.2242, 48.7886, 43.0572

Deuteranopia

49.8670, 48.8423, 42.8756



Tritanopia

50.6117, 48.6257, 56.5873

Trichromacy



Original Color

47.8766, 48.7291, 42.4796

Protanomaly

46.7884, 48.7699, 43.0239

Deuteranomaly

49.2166, 48.8056, 42.9028

Tritanomaly

49.4654, 48.4550, 51.0016

Monochromacy



Original Color

47.8766, 48.7291, 42.4796

Achromatopsia

46.6715, 49.1021, 53.4722

Achromatomaly

47.1231, 49.1187, 49.1167

CSS Examples

Text

The CSS property to change the color of the text to XYZ 47.8766, 48.7291, 42.4796 is called "color". The color property can be set on classes, ids or directly on the HTML element.

This example shows how text in the color rgb(202, 182, 165) looks like.

```
.text, #text, p{  
    color:rgb(202, 182, 165)  
}
```

If you want to add a text shadow in that color use the text-shadow property, you can generate a text shadow directly with our [CSS Text Shadow Generator](#).

Here you see how black text with a 4 pixel rgb(202, 182, 165) colored shadow looks like.

```
.shadow{ text-shadow: 4px 4px 2px rgb(202, 182, 165) }
```

Border

The CSS property to change the border of an element to XYZ 47.8766, 48.7291, 42.4796 is called "border". The border property can be set on classes, ids or directly on the HTML element.

This example shows the color as border, it can be applied via the CSS property "border" or "border-color".

```
.border, #border, table{ border:4px solid rgb(202, 182, 165) }
```


If only the border color should be changed use the property `border-color`.

```
.border{ border-color:rgb(202, 182, 165) }
```

If you want to add a box shadow in that color use:

Here you see how a box with a 4 pixel `rgb(202, 182, 165)` colored shadow looks like.

```
.boxshadow{ -moz-box-shadow:4px 4px 4px  
4px rgb(202, 182, 165); -webkit-box-  
shadow:4px 4px 4px 4px rgb(202, 182, 165);  
box-shadow:4px 4px 4px 4px rgb(202, 182,  
165) }
```

Background

The CSS property to change the background color of an element to XYZ 47.8766, 48.7291, 42.4796 is called "background". The background property can be set on classes, ids or directly on the HTML element.

```
.background, #background, body{  
background: rgb(202, 182, 165) }
```

If only the background color should be changed can be used:

```
.background{ background-color: rgb(202,  
182, 165) }
```

This example shows the color as background, it is applied via the CSS property "background".

To optimize and compress your CSS code, you can use our [online CSS compressor and optimizer](#) based on csstidy. If you want to create a linear or radial gradient as background or border, check our [CSS Gradient Generator](#).

Hey! You found this booklet interesting? Support Converting Colors with the new Membership Option!

The pro membership hides all ads, plus gives you double the colors in the color bucket, and more awesome pro features!

[Learn more, Memberships starting at \\$2.50/m!](#)

**Follow me
on Twitter!**

@ConvertingColor