

Converting Colors

XYZ(47.8823, 46.8025, 53.2371)

Have a look what the booklet for
XYZ(47.8823, 46.8025, 53.2371)
contains.

XYZ(47.6770, 46.6016, 52.9365)	3
<i>Conversions</i>	4
<i>Details</i>	6
<i>Harmonies</i>	12
<i>Previews</i>	24
<i>Color Blindness Simulation</i>	28
<i>CSS Examples</i>	31

Color

**XYZ(47.6770, 46.6016,
52.9365)**

Conversions

Conversions Part 1

Format	Color
Hex	C6B0BA
RGB	198, 176, 186
RGB Percent	78%, 69%, 73%
CMY	0.2235, 0.3098, 0.2706
CMYK	0.00, 0.11, 0.06, 0.22
HSL	333°, 16%, 73%
HSV	333°, 11%, 78%
XYZ	47.6770, 46.6016, 52.9365
YIQ	183.7180, 9.9020, 7.7740

Conversions

Conversions Part 2

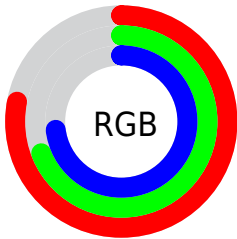
Format	Color
R _Y B	198, 176, 186
Decimal	13021370
CIE Lab	73.93, 9.63, -2.20
CIE LCh	74, 9.879, 347.105
Yxy	46.6016, 0.3239, 0.3166
Android (android.graphics.Color)	4291211450 (0xFFC6B0BA)
YUV	183.7180, 1.1250, 12.5253
Hunter-Lab	68.2654, 5.2012, 1.8092

Details

The XYZ color **47.6770, 46.6016, 52.9365** is a light color, and the websafe version is hex **CCCCCC**. A complement of this color would be **47.1775, 53.2504, 55.3715**, and the grayscale version is **45.3957, 47.7598, 52.0104**.

A 20% lighter version of the original color is **86.1236, 85.3840, 95.9460**, and **22.8182, 21.7887, 25.1933** is the 20% darker color. If you saturate the color by 10%, you get **42.9693, 38.9546, 45.9144**, and if you desaturate by 10%, it is **53.0404, 55.4200, 60.6066**.

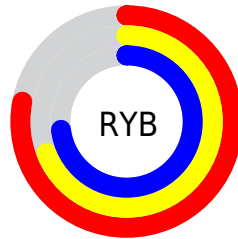
Distribution



Red (78%)

Green (69%)

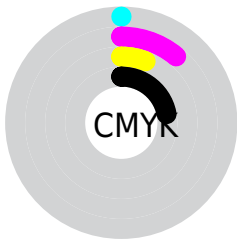
Blue (73%)



Red (78%)

Yellow (69%)

Blue (73%)

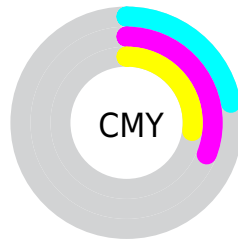


Cyan (0%)

Magenta (11%)

Yellow (6%)

Black (22%)



Cyan (22%)

Magenta (31%)

Yellow (27%)

Brightness & Saturation Gradients

These gradients show how the XYZ color 47.6770, 46.6016, 52.9365 changes by changing the brightness by 10 percent. The first figure shows a shift by +10% for each color and the second figure -10%.

Similar to the brightness gradients but the following saturation gradients show a change of the XYZ color 47.6770, 46.6016, 52.9365 by changing the saturation by 10% instead.

■ 47.6770, 46.6016,
52.9365

■ 47.6770, 46.6016,
52.9365

368.1143,
373.2220, 415.1008

■ 33.7814, 32.7208,
37.3647

■ 85.9359, 85.1186,
95.9515

■ 22.8878, 21.9127,
25.1920

111.0299,
110.5237, 124.2318

■ 14.6309, 13.7927,
15.9998

140.5873,
140.5389, 157.5854

■ 8.6454, 7.9767,
9.3697

174.9736,
175.5488, 196.4307

■ 4.5659, 4.0800,
4.8830

214.5541,
215.9376, 241.1864

■ 2.0270, 1.7184,
2.1212

259.6942,

■ 0.6490, 0.4355,

262.0898, 292.2710

0.6284

310.7591,
314.3898, 350.1029

■ 0.0000, 0.0000,
0.0000

■ 47.6770, 46.6016,
52.9365

■ 47.6770, 46.6016,
52.9365

■ 42.9693, 38.9546,
45.9144

■ 53.0404, 55.4200,
60.6066

■ 38.8871, 32.4231,
39.5192

■ 59.0804, 65.4501,
68.9392

■ 35.4034, 26.9561,
33.7327

■ 65.8216, 76.7381,
77.9518

■ 32.4880, 22.4961,
28.5347

■ 73.2210, 89.1947,
87.6386

■ 30.1075, 18.9800,
23.9036

■ 74.7787, 89.8178,
95.8414

■ 28.2251, 16.3375,
19.8162

■ 76.4320, 90.4791,
104.5474

■ 26.7989, 14.4886,
16.2471

■ 77.0990, 90.7459,
108.0599

■ 25.7793, 13.3379,
13.1677

■ 25.1338, 12.7438,
10.8042

Harmonies

Analogous

The Analogous color harmony consists of three colors that are next to each other on the color wheel.



46.8208, 46.6016, 57.6328



47.6770, 46.6016, 52.9365



47.6094, 46.6016, 47.9420

Triad

The Triadic color harmony groups three colors that are evenly spaced from another and form a triangle on the color wheel.



47.6770, 46.6016, 52.9365



43.3049, 46.6016, 42.0250



42.0282, 46.6016, 58.1828

Complementary

The Complementary color scheme is a pair of colors which are on the opposite of each other on the color wheel.



47.6770, 46.6016, 52.9365



47.1775, 53.2504, 55.3715

Split Complementary

Split-complementary colors differ from the complementary color scheme. The scheme consists of three colors, the original color and two neighbors of the complement color.



41.1351, 46.6016, 53.6474



47.6770, 46.6016, 52.9365



41.8587, 46.6016, 44.4222

Square

The Square scheme is like the rectangle color scheme, but the four colors are evenly spaced on the color wheel.



47.6770, 46.6016, 52.9365



45.0535, 46.6016, 41.8626



41.0738, 46.6016, 48.6075



43.5420, 46.6016, 60.7940

Rectangle

The Rectangle color scheme consists of four colors that form a rectangle on the color wheel.



47.6770, 46.6016, 52.9365



47.0494, 46.6016, 45.1126



41.0738, 46.6016, 48.6075



41.6472, 46.6016, 56.8196

Sweetspot

The Sweet Spot groups the original color and five complimentary colors.



47.6783, 46.6036, 52.9375



91.9932, 94.9499, 104.6021



46.3935, 45.7876, 59.8196



19.5195, 20.0415, 22.1472



0.0000, 0.0000, 0.0000



20.3446, 21.4041, 23.3091

Same Dimension

The Same Dimension uses a secret algorithm to generate beautiful new colors.



47.6783, 46.6036, 52.9375



82.5951, 79.5324, 91.0539



46.7964, 46.4815, 47.5821



10.8309, 10.7158, 12.0930



16.3869, 8.3043, 7.2474



0.8123, 0.4078, 0.5349

Inverse Universe

The Inverse Universe completely reimagines the original color for something new.



47.6783, 46.6036, 52.9375



82.5951, 79.5324, 91.0539



48.1259, 53.3623, 61.1903



10.8309, 10.7158, 12.0930



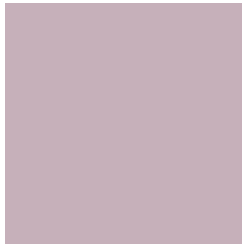
16.3869, 8.3043, 7.2474



0.8123, 0.4078, 0.5349

Previews

White Background



This preview shows how the XYZ color 47.6770, 46.6016, 52.9365 looks on a white background.

Color Contrast Check

Large Text (above 18pt) WCAG AA × Fail

Any Text WCAG AA × Fail

Large Text (above 18pt) WCAG AAA × Fail

Any Text WCAG AAA × Fail

Black Background



This preview shows how the XYZ color 47.6770, 46.6016, 52.9365 looks on a black background.

Color Contrast Check

Large Text (above 18pt) WCAG AA ✓ Pass

Any Text WCAG AA ✓ Pass

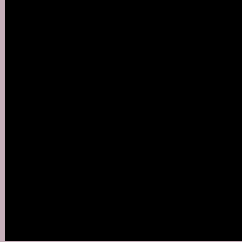
Large Text (above 18pt) WCAG AAA ✓ Pass

Any Text WCAG AAA ✓ Pass

If you want to check with other color combinations, try the [Color Contrast Checker](#).

XYZ 47.6770, 46.6016, 52.9365

Background



This preview shows how black text looks on a background with the XYZ color 47.6770, 46.6016, 52.9365.



This preview shows how white text looks on a background with the XYZ color 47.6770, 46.6016,

52.9365.

Color Blindness Simulation

Color vision deficiency is a very complex topic, and I could not describe the different causes any better than Wikipedia does, so if you want to learn more, you should check out their [article about color blindness](#).

Dichromacy



Original Color

47.6770, 46.6016, 52.9365

Protanopia

45.2376, 46.7891, 54.7910

Deuteranopia

47.4142, 46.4662, 52.9242



Tritanopia

47.8040, 46.3398, 54.5691

Trichromacy



Original Color

47.6770, 46.6016, 52.9365

Protanomaly

45.9362, 46.5624, 54.1433

Deuteranomaly

47.4142, 46.4662, 52.9242

Tritanomaly

47.6958, 46.2966, 53.9992

Monochromacy



Original Color

47.6770, 46.6016, 52.9365

Achromatopsia

45.5594, 47.9320, 52.1980

Achromatomaly

46.2671, 47.3693, 52.6036

CSS Examples

Text

The CSS property to change the color of the text to XYZ 47.6770, 46.6016, 52.9365 is called "color". The color property can be set on classes, ids or directly on the HTML element.

This example shows how text in the color `rgb(198, 176, 186)` looks like.

```
.text, #text, p{  
    color:rgb(198, 176, 186)  
}
```

If you want to add a text shadow in that color use the text-shadow property, you can generate a text shadow directly with our [CSS Text Shadow Generator](#).

Here you see how black text with a 4 pixel rgb(198, 176, 186) colored shadow looks like.

```
.shadow{ text-shadow: 4px 4px 2px rgb(198, 176, 186) }
```

Border

The CSS property to change the border of an element to XYZ 47.6770, 46.6016, 52.9365 is called "border". The border property can be set on classes, ids or directly on the HTML element.

This example shows the color as border, it can be applied via the CSS property "border" or "border-color".

```
.border, #border, table{ border:4px solid rgb(198, 176, 186) }
```


If only the border color should be changed use the property `border-color`.

```
.border{ border-color:rgb(198, 176, 186) }
```

If you want to add a box shadow in that color use:

Here you see how a box with a 4 pixel `rgb(198, 176, 186)` colored shadow looks like.

```
.boxshadow{ -moz-box-shadow:4px 4px 4px  
4px rgb(198, 176, 186); -webkit-box-  
shadow:4px 4px 4px 4px rgb(198, 176, 186);  
box-shadow:4px 4px 4px 4px rgb(198, 176,  
186) }
```

Background

The CSS property to change the background color of an element to XYZ 47.6770, 46.6016, 52.9365 is called "background". The background property can be set on classes, ids or directly on the HTML element.

```
.background, #background, body{  
background: rgb(198, 176, 186) }
```

If only the background color should be changed can be used:

```
.background{ background-color: rgb(198,  
176, 186) }
```

This example shows the color as background, it is applied via the CSS property "background".

To optimize and compress your CSS code, you can use our [online CSS compressor and optimizer](#) based on csstidy. If you want to create a linear or radial gradient as background or border, check our [CSS Gradient Generator](#).

Hey! You found this booklet interesting? Support Converting Colors with the new Membership Option!

The pro membership hides all ads, plus gives you double the colors in the color bucket, and more awesome pro features!

[Learn more, Memberships starting at \\$2.50/m!](#)

**Follow me
on Twitter!**

@ConvertingColor