

Converting Colors

XYZ(47.9049, 44.4565, 42.7370)

Have a look what the booklet for
XYZ(47.9049, 44.4565, 42.7370)
contains.

XYZ(47.9451, 44.4245, 42.6070)	3
<i>Conversions</i>	4
<i>Details</i>	6
<i>Harmonies</i>	12
<i>Previews</i>	24
<i>Color Blindness Simulation</i>	28
<i>CSS Examples</i>	31

Color

**XYZ(47.9451, 44.4245,
42.6070)**

Conversions

Conversions Part 1

Format	Color
Hex	D4A7A7
RGB	212, 167, 167
RGB Percent	83%, 65%, 65%
CMY	0.1686, 0.3451, 0.3451
CMYK	0.00, 0.21, 0.21, 0.17
HSL	0°, 34%, 74%
HSV	0°, 21%, 83%
XYZ	47.9451, 44.4245, 42.6070
YIQ	180.4550, 26.8200, 9.5400

Conversions

Conversions Part 2

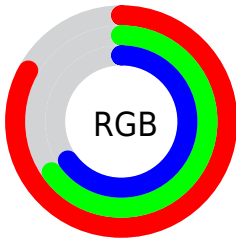
Format	Color
R _Y B	212, 167, 167
Decimal	13936551
CIE Lab	72.51, 16.51, 6.32
CIE LCh	73, 17.674, 20.950
Yxy	44.4245, 0.3552, 0.3291
Android (android.graphics.Color)	4292126631 (0xFFD4A7A7)
YUV	180.4550, -6.6333, 27.6650
Hunter-Lab	66.6517, 11.7613, 8.7552

Details

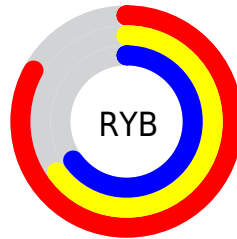
The XYZ color **47.9451, 44.4245, 42.6070** is a light color, and the websafe version is hex **CC9999**. A complement of this color would be **51.3628, 60.0542, 71.1721**, and the grayscale version is **43.6525, 45.9258, 50.0132**.

A 20% lighter version of the original color is **80.5461, 78.7765, 80.0674**, and **23.1299, 20.6674, 18.9898** is the 20% darker color. If you saturate the color by 10%, you get **42.5735, 36.5646, 31.9269**, and if you desaturate by 10%, it is **54.2770, 53.6900, 55.1933**.

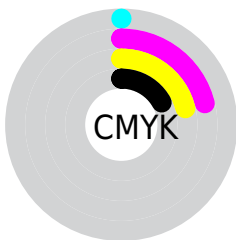
Distribution



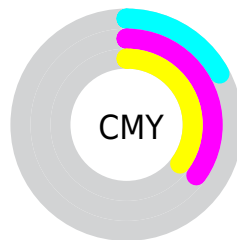
- Red (83%)
- Green (65%)
- Blue (65%)



- Red (83%)
- Yellow (65%)
- Blue (65%)



- Cyan (0%)
- Magenta (21%)
- Yellow (21%)
- Black (17%)





- Cyan (17%)
- Magenta (35%)
- Yellow (35%)

Brightness & Saturation Gradients

These gradients show how the XYZ color 47.9451, 44.4245, 42.6070 changes by changing the brightness by 10 percent. The first figure shows a shift by +10% for each color and the second figure -10%.


Similar to the brightness gradients but the following saturation gradients show a change of the XYZ color 47.9451, 44.4245, 42.6070 by changing the saturation by 10% instead.


 47.9451, 44.4245,
42.6070


 47.9451, 44.4245,
42.6070

369.1607,
364.4377, 372.8667

 33.9945, 31.0044,
29.2478


 86.3328, 81.8561,
80.3975

 23.0522, 20.6022,
19.0211


 111.5007,
106.6364, 105.6658

 14.7530, 12.8335,
11.5086


141.1383,
135.9722, 135.7408

 8.7314, 7.3140,
6.2916

175.6111,
170.2479, 171.0412

 4.6221, 3.6592,
2.9515

215.2844,
209.8480, 211.9855

 2.0597, 1.4848,
1.0699

260.5235,

 0.6672, 0.2780,

255.1567, 258.9921

0.0000

311.6938,
306.5585, 312.4796

■ 0.0000, 0.0000,
0.0000

■ 47.9451, 44.4245,
42.6070

■ 47.9451, 44.4245,
42.6070

■ 42.5735, 36.5646,
31.9269

■ 54.2770, 53.6900,
55.1933

■ 38.1119, 30.0360,
23.0575

■ 61.6089, 64.4186,
69.7693

■ 34.5111, 24.7669,
15.8993

■ 69.9830, 76.6720,
86.4171

■ 31.7155, 20.6761,
10.3421

■ 79.4376, 90.5066,
105.2132

■ 29.6633, 17.6731,
6.2628

■ 80.9615, 92.7371,
108.2407

■ 28.2837, 15.6542,
3.5206

■ 27.4921, 14.4957,
1.9473

■ 27.1517, 13.9975,
1.2707

Harmonies

Analogous

The Analogous color harmony consists of three colors that are next to each other on the color wheel.



48.2886, 44.4245, 51.0629



47.9451, 44.4245, 42.6070



46.0302, 44.4245, 36.4576

Triad

The Triadic color harmony groups three colors that are evenly spaced from another and form a triangle on the color wheel.



47.9451, 44.4245, 42.6070



37.8288, 44.4245, 38.5364



41.3078, 44.4245, 66.9387

Complementary

The Complementary color scheme is a pair of colors which are on the opposite of each other on the color wheel.



47.9451, 44.4245, 42.6070



51.3628, 60.0542, 71.1721

Split Complementary

Split-complementary colors differ from the complementary color scheme. The scheme consists of three colors, the original color and two neighbors of the complement color.



38.6339, 44.4245, 62.6317



47.9451, 44.4245, 42.6070



36.6900, 44.4245, 45.7749

Square

The Square scheme is like the rectangle color scheme, but the four colors are evenly spaced on the color wheel.



47.9451, 44.4245, 42.6070



40.1605, 44.4245, 34.3117



36.9774, 44.4245, 54.6321



44.3573, 44.4245, 65.8251

Rectangle

The Rectangle color scheme consists of four colors that form a rectangle on the color wheel.



47.9451, 44.4245, 42.6070



44.1687, 44.4245, 34.1603



36.9774, 44.4245, 54.6321



40.3376, 44.4245, 66.0594

Sweetspot

The Sweet Spot groups the original color and five complimentary colors.



47.9463, 44.4265, 42.6079



87.9959, 89.6780, 94.8763



52.8541, 46.3884, 68.4557



18.6778, 18.9651, 19.9955



0.0000, 0.0000, 0.0000



20.3446, 21.4041, 23.3091

Same Dimension

The Same Dimension uses a secret algorithm to generate beautiful new colors.



47.9463, 44.4265, 42.6079



69.3582, 62.4059, 57.8246



52.4321, 53.3982, 44.1032



12.4234, 12.4210, 12.9034



16.7621, 8.6414, 0.7845



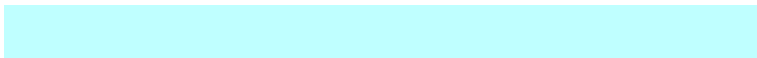
1.0110, 0.5213, 0.0473

Inverse Universe

The Inverse Universe completely reimagines the original color for something new.



51.3628, 60.0542, 71.1721



75.3569, 89.8451, 107.9778



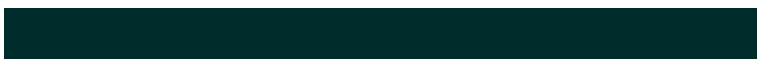
46.1258, 49.5801, 69.4264



12.7921, 14.1077, 15.9864



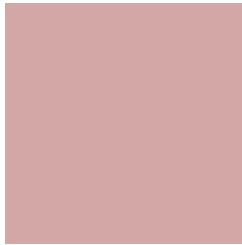
21.8680, 31.9978, 43.4768



1.3190, 1.9300, 2.6223

Previews

White Background



This preview shows how the XYZ color 47.9451, 44.4245, 42.6070 looks on a white background.

Color Contrast Check

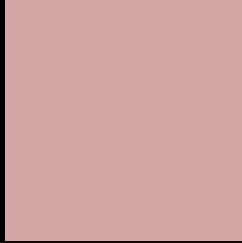
Large Text (above 18pt) WCAG AA × Fail

Any Text WCAG AA × Fail

Large Text (above 18pt) WCAG AAA × Fail

Any Text WCAG AAA × Fail

Black Background



This preview shows how the XYZ color 47.9451, 44.4245, 42.6070 looks on a black background.

Color Contrast Check

Large Text (above 18pt) WCAG AA ✓ Pass

Any Text WCAG AA ✓ Pass

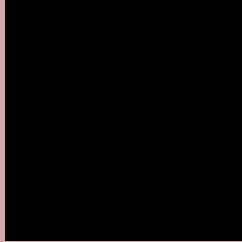
Large Text (above 18pt) WCAG AAA ✓ Pass

Any Text WCAG AAA ✓ Pass

If you want to check with other color combinations, try the [Color Contrast Checker](#).

XYZ 47.9451, 44.4245, 42.6070

Background



This preview shows how black text looks on a background with the XYZ color 47.9451, 44.4245, 42.6070.



This preview shows how white text looks on a background with the XYZ color 47.9451, 44.4245,

Color Blindness Simulation

Color vision deficiency is a very complex topic, and I could not describe the different causes any better than Wikipedia does, so if you want to learn more, you should check out their [article about color blindness](#).

Dichromacy



Original Color

47.9451, 44.4245, 42.6070

Protanopia

42.7934, 44.5287, 45.8746

Deuteranopia

45.4549, 44.5376, 42.2773



Tritanopia

48.9316, 44.2708, 48.0856

Trichromacy



Original Color

47.9451, 44.4245, 42.6070

Protanomaly

44.5424, 44.2967, 44.7306

Deuteranomaly

46.1595, 44.3400, 42.2020

Tritanomaly

48.7168, 44.4746, 46.0612

Monochromacy



Original Color

47.9451, 44.4245, 42.6070

Achromatopsia

43.3819, 45.6411, 49.7032

Achromatomaly

44.8061, 44.9616, 46.8744

CSS Examples

Text

The CSS property to change the color of the text to XYZ 47.9451, 44.4245, 42.6070 is called "color". The color property can be set on classes, ids or directly on the HTML element.

This example shows how text in the color rgb(212, 167, 167) looks like.

```
.text, #text, p{  
    color:rgb(212, 167, 167)  
}
```

If you want to add a text shadow in that color use the text-shadow property, you can generate a text shadow directly with our [CSS Text Shadow Generator](#).

Here you see how black text with a 4 pixel rgb(212, 167, 167) colored shadow looks like.

```
.shadow{ text-shadow: 4px 4px 2px rgb(212, 167, 167) }
```

Border

The CSS property to change the border of an element to XYZ 47.9451, 44.4245, 42.6070 is called "border". The border property can be set on classes, ids or directly on the HTML element.

This example shows the color as border, it can be applied via the CSS property "border" or "border-color".

```
.border, #border, table{ border:4px solid rgb(212, 167, 167) }
```


If only the border color should be changed use the property `border-color`.

```
.border{ border-color:rgb(212, 167, 167) }
```

If you want to add a box shadow in that color use:

Here you see how a box with a 4 pixel `rgb(212, 167, 167)` colored shadow looks like.

```
.boxshadow{ -moz-box-shadow:4px 4px 4px  
4px rgb(212, 167, 167); -webkit-box-  
shadow:4px 4px 4px 4px rgb(212, 167, 167);  
box-shadow:4px 4px 4px 4px rgb(212, 167,  
167) }
```

Background

The CSS property to change the background color of an element to XYZ 47.9451, 44.4245, 42.6070 is called "background". The background property can be set on classes, ids or directly on the HTML element.

```
.background, #background, body{  
background: rgb(212, 167, 167) }
```

If only the background color should be changed can be used:

```
.background{ background-color: rgb(212,  
167, 167) }
```

This example shows the color as background, it is applied via the CSS property "background".

To optimize and compress your CSS code, you can use our [online CSS compressor and optimizer](#) based on csstidy. If you want to create a linear or radial gradient as background or border, check our [CSS Gradient Generator](#).

Hey! You found this booklet interesting? Support Converting Colors with the new Membership Option!

The pro membership hides all ads, plus gives you double the colors in the color bucket, and more awesome pro features!

[Learn more, Memberships starting at \\$2.50/m!](#)

**Follow me
on Twitter!**

@ConvertingColor