

Converting Colors

XYZ(47.9052, 45.1928, 42.7583)

Have a look what the booklet for
XYZ(47.9052, 45.1928, 42.7583)
contains.

XYZ(47.9281, 45.2411, 42.7655)	3
<i>Conversions</i>	4
<i>Details</i>	6
<i>Harmonies</i>	12
<i>Previews</i>	24
<i>Color Blindness Simulation</i>	28
<i>CSS Examples</i>	31

Color

**XYZ(47.9281, 45.2411,
42.7655)**

Conversions

Conversions Part 1

Format	Color
Hex	D2AAA7
RGB	210, 170, 167
RGB Percent	82%, 67%, 65%
CMY	0.1765, 0.3333, 0.3451
CMYK	0.00, 0.19, 0.20, 0.18
HSL	4°, 32%, 74%
HSV	4°, 20%, 82%
XYZ	47.9281, 45.2411, 42.7655
YIQ	181.6180, 24.8030, 7.5470

Conversions

Conversions Part 2

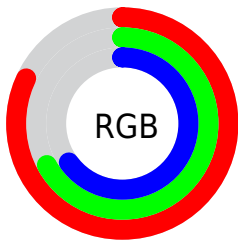
Format	Color
R _Y B	210, 170, 167
Decimal	13806247
CIE Lab	73.05, 14.14, 7.07
CIE LCh	73, 15.804, 26.565
Yxy	45.2411, 0.3526, 0.3328
Android (android.graphics.Color)	4291996327 (0xFFD2AAA7)
YUV	181.6180, -7.2067, 24.8910
Hunter-Lab	67.2615, 9.4850, 9.3859

Details

The XYZ color **47.9281, 45.2411, 42.7655** is a light color, and the websafe version is hex **CC9999**. A complement of this color would be **49.8815, 57.4927, 69.4413**, and the grayscale version is **44.2852, 46.5915, 50.7381**.

A 20% lighter version of the original color is **81.3500, 80.3844, 80.3354**, and **23.0905, 21.1632, 19.0876** is the 20% darker color. If you saturate the color by 10%, you get **42.7487, 37.7408, 32.2262**, and if you desaturate by 10%, it is **53.9693, 53.9597, 55.1484**.

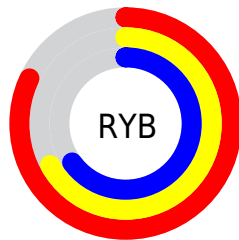
Distribution



Red (82%)

Green (67%)

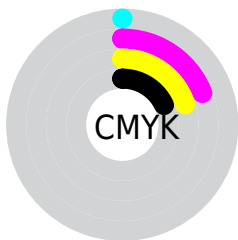
Blue (65%)



Red (82%)

Yellow (67%)

Blue (65%)

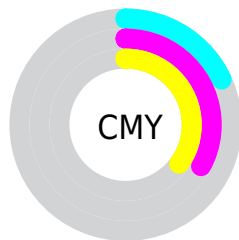


Cyan (0%)

Magenta (19%)

Yellow (20%)

Black (18%)



Cyan (18%)


Magenta (33%)

Yellow (35%)

Brightness & Saturation Gradients


These gradients show how the XYZ color 47.9281, 45.2411, 42.7655 changes by changing the brightness by 10 percent. The first figure shows a shift by +10% for each color and the second figure -10%.


Similar to the brightness gradients but the following saturation gradients show a change of the XYZ color 47.9281, 45.2411, 42.7655 by changing the saturation by 10% instead.


 47.9281, 45.2411,
42.7655


 47.9281, 45.2411,
42.7655


369.0944,
367.7491, 373.5393

 33.9810, 31.6474,
29.3711


 86.3077, 83.0821,
80.6394

 23.0418, 21.0923,
19.1138


 111.4708,
108.0981, 105.9561

 14.7452, 13.1915,
11.5749

141.1034,
137.6904, 136.0839

 8.7259, 7.5605,
6.3359

175.5707,
172.2433, 171.4414

 4.6185, 3.8151,
2.9783

215.2381,
212.1413, 212.4471

 2.0577, 1.5707,
1.0836

260.4709,

 0.6660, 0.3377,

257.7686, 259.5197

0.0000

311.6346,
309.5098, 313.0776

■ 0.0000, 0.0000,
0.0000

■ 47.9281, 45.2411,
42.7655

■ 47.9281, 45.2411,
42.7655

■ 42.7487, 37.7408,
32.2262

■ 53.9693, 53.9597,
55.1484

■ 38.3884, 31.3987,
23.4397

■ 60.9052, 63.9410,
69.4542

■ 34.8061, 26.1590,
16.3117

■ 68.7715, 75.2347,
85.7610

■ 31.9560, 21.9586,
10.7380

■ 77.6008, 87.8859,
104.1416

■ 29.7874, 18.7284,
6.6025

■ 80.3885, 92.4417,
108.2139

■ 28.2431, 16.3905,
3.7730

■ 27.2563, 14.8552,
2.0926

■ 26.7447, 14.0341,
1.2993

Harmonies

Analogous

The Analogous color harmony consists of three colors that are next to each other on the color wheel.



48.5231, 45.2411, 50.1770



47.9281, 45.2411, 42.7655



45.9938, 45.2411, 37.6249

Triad

The Triadic color harmony groups three colors that are evenly spaced from another and form a triangle on the color wheel.



47.9281, 45.2411, 42.7655



38.7184, 45.2411, 41.3448



42.6828, 45.2411, 66.0576

Complementary

The Complementary color scheme is a pair of colors which are on the opposite of each other on the color wheel.



47.9281, 45.2411, 42.7655



49.8815, 57.4927, 69.4413

Split Complementary

Split-complementary colors differ from the complementary color scheme. The scheme consists of three colors, the original color and two neighbors of the complement color.



40.1396, 45.2411, 63.0756



47.9281, 45.2411, 42.7655



37.9134, 45.2411, 48.3540

Square

The Square scheme is like the rectangle color scheme, but the four colors are evenly spaced on the color wheel.



47.9281, 45.2411, 42.7655



40.6685, 45.2411, 36.8684



38.4224, 45.2411, 56.3805



45.4196, 45.2411, 64.1566

Rectangle

The Rectangle color scheme consists of four colors that form a rectangle on the color wheel.



47.9281, 45.2411, 42.7655



44.2462, 45.2411, 35.8965



38.4224, 45.2411, 56.3805



41.7780, 45.2411, 65.5858

Sweetspot

The Sweet Spot groups the original color and five complimentary colors.



47.9293, 45.2432, 42.7664



88.3106, 90.3073, 94.9812



51.6763, 45.8511, 65.2438



18.7518, 19.1132, 20.0201



0.0000, 0.0000, 0.0000



20.3446, 21.4041, 23.3091

Same Dimension

The Same Dimension uses a secret algorithm to generate beautiful new colors.



47.9293, 45.2432, 42.7664



70.3447, 64.3789, 58.1534



52.2647, 53.9139, 44.2116



11.8741, 11.9389, 12.2906



16.3410, 8.6149, 0.8016



0.9374, 0.5292, 0.0527

Inverse Universe

The Inverse Universe completely reimagines the original color for something new.



49.8815, 57.4927, 69.4413



73.9544, 87.0401, 107.5103



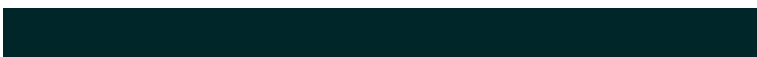
45.0515, 47.8327, 67.8312



12.0847, 13.2597, 15.1661



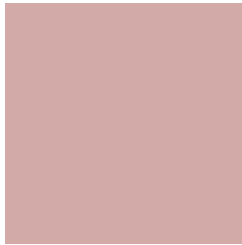
19.0755, 26.7977, 41.3596



1.0883, 1.5417, 2.3198

Previews

White Background



This preview shows how the XYZ color 47.9281, 45.2411, 42.7655 looks on a white background.

Color Contrast Check

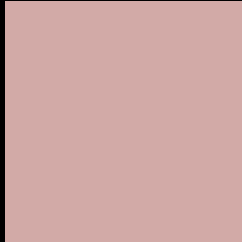
Large Text (above 18pt) WCAG AA × Fail

Any Text WCAG AA × Fail

Large Text (above 18pt) WCAG AAA × Fail

Any Text WCAG AAA × Fail

Black Background



This preview shows how the XYZ color 47.9281, 45.2411, 42.7655 looks on a black background.

Color Contrast Check

Large Text (above 18pt) WCAG AA ✓ Pass

Any Text WCAG AA ✓ Pass

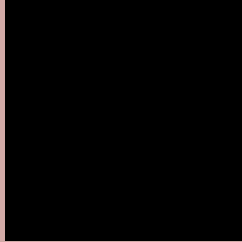
Large Text (above 18pt) WCAG AAA ✓ Pass

Any Text WCAG AAA ✓ Pass

If you want to check with other color combinations, try the [Color Contrast Checker](#).

XYZ 47.9281, 45.2411, 42.7655

Background



This preview shows how black text looks on a background with the XYZ color 47.9281, 45.2411, 42.7655.



This preview shows how white text looks on a background with the XYZ color 47.9281, 45.2411,

Color Blindness Simulation

Color vision deficiency is a very complex topic, and I could not describe the different causes any better than Wikipedia does, so if you want to learn more, you should check out their [article about color blindness](#).

Dichromacy



Original Color

47.9281, 45.2411, 42.7655

Protanopia

43.5741, 45.5330, 45.5219

Deuteranopia

46.1836, 45.1969, 42.3661



Tritanopia

49.4945, 45.3385, 49.8586

Trichromacy



Original Color

47.9281, 45.2411, 42.7655

Protanomaly

45.0292, 45.4223, 44.4243

Deuteranomaly

46.8123, 45.2374, 42.3408

Tritanomaly

48.8884, 45.3594, 47.2528

Monochromacy



Original Color

47.9281, 45.2411, 42.7655

Achromatopsia

44.4628, 46.7784, 50.9417

Achromatomaly

45.5944, 46.2216, 48.1135

CSS Examples

Text

The CSS property to change the color of the text to XYZ 47.9281, 45.2411, 42.7655 is called "color". The color property can be set on classes, ids or directly on the HTML element.

This example shows how text in the color `rgb(210, 170, 167)` looks like.

```
.text, #text, p{  
    color:rgb(210, 170, 167)  
}
```

If you want to add a text shadow in that color use the text-shadow property, you can generate a text shadow directly with our [CSS Text Shadow Generator](#).

Here you see how black text with a 4 pixel rgb(210, 170, 167) colored shadow looks like.

```
.shadow{ text-shadow: 4px 4px 2px rgb(210, 170, 167) }
```

Border

The CSS property to change the border of an element to XYZ 47.9281, 45.2411, 42.7655 is called "border". The border property can be set on classes, ids or directly on the HTML element.

This example shows the color as border, it can be applied via the CSS property "border" or "border-color".

```
.border, #border, table{ border:4px solid rgb(210, 170, 167) }
```


If only the border color should be changed use the property `border-color`.

```
.border{ border-color:rgb(210, 170, 167) }
```

If you want to add a box shadow in that color use:

Here you see how a box with a 4 pixel `rgb(210, 170, 167)` colored shadow looks like.

```
.boxshadow{ -moz-box-shadow:4px 4px 4px  
4px rgb(210, 170, 167); -webkit-box-  
shadow:4px 4px 4px 4px rgb(210, 170, 167);  
box-shadow:4px 4px 4px 4px rgb(210, 170,  
167) }
```

Background

The CSS property to change the background color of an element to XYZ 47.9281, 45.2411, 42.7655 is called "background". The background property can be set on classes, ids or directly on the HTML element.

```
.background, #background, body{  
background: rgb(210, 170, 167) }
```

If only the background color should be changed can be used:

```
.background{ background-color: rgb(210,  
170, 167) }
```

This example shows the color as background, it is applied via the CSS property "background".

To optimize and compress your CSS code, you can use our [online CSS compressor and optimizer](#) based on csstidy. If you want to create a linear or radial gradient as background or border, check our [CSS Gradient Generator](#).

Hey! You found this booklet interesting? Support Converting Colors with the new Membership Option!

The pro membership hides all ads, plus gives you double the colors in the color bucket, and more awesome pro features!

[Learn more, Memberships starting at \\$2.50/m!](#)

**Follow me
on Twitter!**

@ConvertingColor