

Converting Colors

XYZ(48.0349, 49.5118, 42.9817)

Have a look what the booklet for
XYZ(48.0349, 49.5118, 42.9817)
contains.

XYZ(48.1108, 49.4517, 43.0858)	3
<i>Conversions</i>	4
<i>Details</i>	6
<i>Harmonies</i>	12
<i>Previews</i>	24
<i>Color Blindness Simulation</i>	28
<i>CSS Examples</i>	31

Color

**XYZ(48.1108, 49.4517,
43.0858)**

Conversions

Conversions Part 1

Format	Color
Hex	C9B8A6
RGB	201, 184, 166
RGB Percent	79%, 72%, 65%
CMY	0.2118, 0.2784, 0.3490
CMYK	0.00, 0.08, 0.17, 0.21
HSL	31°, 24%, 72%
HSV	31°, 17%, 79%
XYZ	48.1108, 49.4517, 43.0858
YIQ	187.0310, 15.9100, -1.9940

Conversions

Conversions Part 2

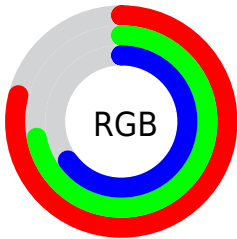
Format	Color
RYB	199, 201, 166
Decimal	13220006
CIELab	75.73, 3.08, 11.33
CIELCh	76, 11.738, 74.767
Yxy	49.4517, 0.3421, 0.3516
Android (android.graphics.Color)	4291410086 (0xFFC9B8A6)
YUV	187.0310, -10.3683, 12.2508
Hunter-Lab	70.3219, -0.9424, 12.8987

Details

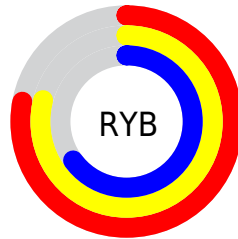
The XYZ color **48.1108, 49.4517, 43.0858** is a light color, and the websafe version is hex **CCCCCC**. A complement of this color would be **43.2017, 46.1898, 61.8972**, and the grayscale version is **47.3031, 49.7665, 54.1957**.

A 20% lighter version of the original color is **85.4512, 88.8006, 81.0431**, and **23.1862, 23.6505, 19.2626** is the 20% darker color. If you saturate the color by 10%, you get **44.4515, 44.8566, 33.4693**, and if you desaturate by 10%, it is **52.2009, 54.4464, 54.2689**.

Distribution



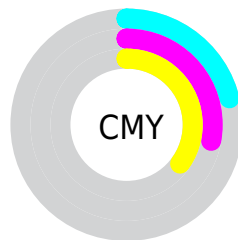
- Red (79%)
- Green (72%)
- Blue (65%)



- Red (78%)
- Yellow (79%)
- Blue (65%)



- Cyan (0%)
- Magenta (8%)
- Yellow (17%)
- Black (21%)



- Cyan (21%)
- Magenta (28%)
- Yellow (35%)

Brightness & Saturation Gradients

These gradients show how the XYZ color 48.1108, 49.4517, 43.0858 changes by changing the brightness by 10 percent. The first figure shows a shift by +10% for each color and the second figure -10%.

Similar to the brightness gradients but the following saturation gradients show a change of the XYZ color 48.1108, 49.4517, 43.0858 by changing the saturation by 10% instead.

■ 48.1108, 49.4517,
43.0858

■ 48.1108, 49.4517,
43.0858

369.8064,
384.5179, 374.8961

■ 34.1263, 34.9779,
29.6205

■ 86.5780, 89.3620,
81.1281

■ 23.1540, 23.6459,
19.3011

■ 111.7915,
115.5672, 106.5422

■ 14.8286, 15.0711,
11.7091

141.4785,
146.4518, 136.7763

■ 8.7847, 8.8693,
6.4258

176.0047,
182.4001, 172.2489

■ 4.6570, 4.6560,
3.0327

215.7351,
223.7964, 213.3787

■ 2.0801, 2.0469,
1.1114

261.0354,

■ 0.6784, 0.6345,

271.0252, 260.5841

0.0000

312.2707,
324.4709, 314.2837

■ 0.0000, 0.0000,
0.0000

■ 48.1108, 49.4517,
43.0858

■ 48.1108, 49.4517,
43.0858

■ 44.4515, 44.8566,
33.4693

■ 52.2009, 54.4464,
54.2689

■ 41.2029, 40.6434,
25.3448

■ 56.7330, 59.8444,
67.0819

■ 38.3489, 36.8028,
18.6368

■ 61.7228, 65.6579,
81.5887

■ 35.8710, 33.3226,
13.2614

■ 67.1840, 71.8965,
97.8487

■ 33.7485, 30.1897,
9.1259

■ 71.2219, 77.8064,
105.8721

■ 31.9587, 27.3896,
6.1256

■ 74.0589, 83.4804,
106.8177

■ 30.4750, 24.9067,
4.1381

■ 77.0511, 89.4647,
107.8151

■ 29.2620, 22.7209,
2.9926

■ 77.8975, 91.1576,
108.0973

■ 28.9772, 22.1970,
2.7572

Harmonies

Analogous

The Analogous color harmony consists of three colors that are next to each other on the color wheel.



50.0374, 49.4517, 45.8355



48.1108, 49.4517, 43.0858



45.9434, 49.4517, 43.0641

Triad

The Triadic color harmony groups three colors that are evenly spaced from another and form a triangle on the color wheel.



48.1108, 49.4517, 43.0858



43.0697, 49.4517, 56.9584



50.0123, 49.4517, 62.8123

Complementary

The Complementary color scheme is a pair of colors which are on the opposite of each other on the color wheel.



48.1108, 49.4517, 43.0858



43.2017, 46.1898, 61.8972

Split Complementary

Split-complementary colors differ from the complementary color scheme. The scheme consists of three colors, the original color and two neighbors of the complement color.



48.0774, 49.4517, 66.2888



48.1108, 49.4517, 43.0858



44.0926, 49.4517, 62.7360

Square

The Square scheme is like the rectangle color scheme, but the four colors are evenly spaced on the color wheel.



48.1108, 49.4517, 43.0858



43.0780, 49.4517, 50.7557



45.9111, 49.4517, 66.2598



51.1581, 49.4517, 57.0562

Rectangle

The Rectangle color scheme consists of four colors that form a rectangle on the color wheel.



48.1108, 49.4517, 43.0858



44.6555, 49.4517, 44.5845



45.9111, 49.4517, 66.2598



49.4300, 49.4517, 64.3053

Sweetspot

The Sweet Spot groups the original color and five complimentary colors.



48.1121, 49.4539, 43.0868



91.1212, 95.3190, 97.7972



46.3235, 43.1303, 50.9571



19.3889, 20.2645, 20.6111



0.0000, 0.0000, 0.0000



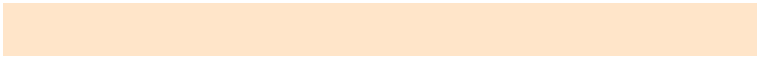
20.3446, 21.4041, 23.3091

Same Dimension

The Same Dimension uses a secret algorithm to generate beautiful new colors.



48.1121, 49.4539, 43.0868



79.8540, 81.5349, 67.0654



51.8573, 56.9443, 44.3352



11.0775, 11.5241, 11.2033



18.3118, 14.1407, 1.7643



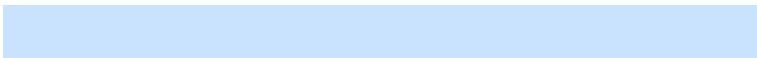
0.9394, 0.8142, 0.1076

Inverse Universe

The Inverse Universe completely reimagines the original color for something new.



43.2017, 46.1898, 61.8972



69.8519, 74.8866, 105.3807



39.9053, 39.5972, 60.7984



10.4747, 11.1234, 13.5124



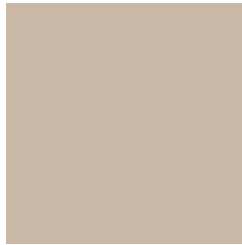
9.4428, 8.2794, 35.8448



0.5196, 0.5369, 1.7214

Previews

White Background



This preview shows how the XYZ color 48.1108, 49.4517, 43.0858 looks on a white background.

Color Contrast Check

Large Text (above 18pt) WCAG AA × Fail

Any Text WCAG AA × Fail

Large Text (above 18pt) WCAG AAA × Fail

Any Text WCAG AAA × Fail

Black Background



This preview shows how the XYZ color 48.1108, 49.4517, 43.0858 looks on a black background.

Color Contrast Check

Large Text (above 18pt) WCAG AA ✓ Pass

Any Text WCAG AA ✓ Pass

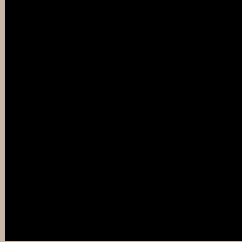
Large Text (above 18pt) WCAG AAA ✓ Pass

Any Text WCAG AAA ✓ Pass

If you want to check with other color combinations, try the [Color Contrast Checker](#).

XYZ 48.1108, 49.4517, 43.0858

Background



This preview shows how black text looks on a background with the XYZ color 48.1108, 49.4517, 43.0858.



This preview shows how white text looks on a background with the XYZ color 48.1108, 49.4517,

Color Blindness Simulation

Color vision deficiency is a very complex topic, and I could not describe the different causes any better than Wikipedia does, so if you want to learn more, you should check out their [article about color blindness](#).

Dichromacy



Original Color

48.1108, 49.4517, 43.0858

Protanopia

47.0396, 49.5099, 43.6363

Deuteranopia

50.4477, 49.4296, 43.4412



Tritanopia

51.2357, 49.5167, 57.8962

Trichromacy



Original Color

48.1108, 49.4517, 43.0858

Protanomaly

47.3500, 49.3583, 43.5907

Deuteranomaly

49.5113, 49.2477, 43.4554

Tritanomaly

50.0774, 49.3458, 52.2327

Monochromacy



Original Color

48.1108, 49.4517, 43.0858

Achromatopsia

47.2335, 49.6933, 54.1160

Achromatomaly

47.4338, 49.5790, 49.7175

CSS Examples

Text

The CSS property to change the color of the text to XYZ 48.1108, 49.4517, 43.0858 is called "color". The color property can be set on classes, ids or directly on the HTML element.

This example shows how text in the color rgb(201, 184, 166) looks like.

```
.text, #text, p{  
    color:rgb(201, 184, 166)  
}
```

If you want to add a text shadow in that color use the text-shadow property, you can generate a text shadow directly with our [CSS Text Shadow Generator](#).

Here you see how black text with a 4 pixel rgb(201, 184, 166) colored shadow looks like.

```
.shadow{ text-shadow: 4px 4px 2px rgb(201, 184, 166) }
```

Border

The CSS property to change the border of an element to XYZ 48.1108, 49.4517, 43.0858 is called "border". The border property can be set on classes, ids or directly on the HTML element.

This example shows the color as border, it can be applied via the CSS property "border" or "border-color".

```
.border, #border, table{ border:4px solid rgb(201, 184, 166) }
```


If only the border color should be changed use the property border-color.

```
.border{ border-color:rgb(201, 184, 166) }
```

If you want to add a box shadow in that color use:

Here you see how a box with a 4 pixel rgb(201, 184, 166) colored shadow looks like.

```
.boxshadow{ -moz-box-shadow:4px 4px 4px  
4px rgb(201, 184, 166); -webkit-box-  
shadow:4px 4px 4px 4px rgb(201, 184, 166);  
box-shadow:4px 4px 4px 4px rgb(201, 184,  
166) }
```

Background

The CSS property to change the background color of an element to XYZ 48.1108, 49.4517, 43.0858 is called "background". The background property can be set on classes, ids or directly on the HTML element.

```
.background, #background, body{  
background: rgb(201, 184, 166) }
```

If only the background color should be changed can be used:

```
.background{ background-color: rgb(201,  
184, 166) }
```

This example shows the color as background, it is applied via the CSS property "background".

To optimize and compress your CSS code, you can use our [online CSS compressor and optimizer](#) based on csstidy. If you want to create a linear or radial gradient as background or border, check our [CSS Gradient Generator](#).

Hey! You found this booklet interesting? Support Converting Colors with the new Membership Option!

The pro membership hides all ads, plus gives you double the colors in the color bucket, and more awesome pro features!

[Learn more, Memberships starting at \\$2.50/m!](#)

**Follow me
on Twitter!**

@ConvertingColor