

Converting Colors

XYZ(48.1522, 48.0089, 33.7675)

Have a look what the booklet for
XYZ(48.1522, 48.0089, 33.7675)
contains.

XYZ(48.1724, 48.1644, 33.9518)	3
<i>Conversions</i>	4
<i>Details</i>	6
<i>Harmonies</i>	12
<i>Previews</i>	24
<i>Color Blindness Simulation</i>	28
<i>CSS Examples</i>	31

Color

**XYZ(48.1724, 48.1644,
33.9518)**

Conversions

Conversions Part 1

Format	Color
Hex	D3B392
RGB	211, 179, 146
RGB Percent	83%, 70%, 57%
CMY	0.1725, 0.2980, 0.4274
CMYK	0.00, 0.15, 0.31, 0.17
HSL	30°, 42%, 70%
HSV	30°, 31%, 83%
XYZ	48.1724, 48.1644, 33.9518
YIQ	184.8060, 29.6650, -3.4790

Conversions

Conversions Part 2

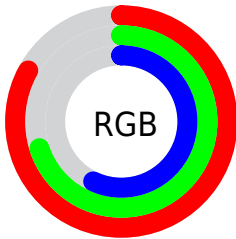
Format	Color
R_{YB}	209, 211, 146
Decimal	13874066
CIE _{Lab}	74.93, 6.72, 21.15
CIE _{LCh}	75, 22.191, 72.386
Yxy	48.1644, 0.3697, 0.3697
Android (android.graphics.Color)	4292064146 (0xFFD3B392)
YUV	184.8060, -19.1314, 22.9721
Hunter-Lab	69.4006, 2.4496, 19.5748

Details

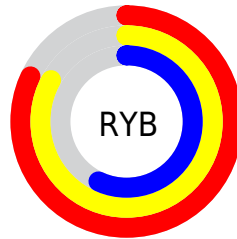
The XYZ color **48.1724, 48.1644, 33.9518** is a light color, and the websafe version is hex **FFCC99**. A complement of this color would be **39.5319, 42.6537, 67.7777**, and the grayscale version is **46.0987, 48.4994, 52.8159**.

A 20% lighter version of the original color is **81.3737, 84.8468, 66.7318**, and **23.0440, 22.7165, 13.9966** is the 20% darker color. If you saturate the color by 10%, you get **44.6766, 43.5615, 25.4225**, and if you desaturate by 10%, it is **52.1304, 53.2066, 44.1308**.

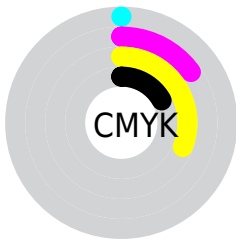
Distribution



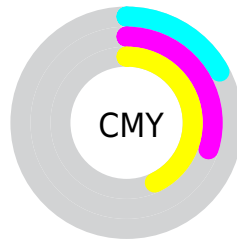
- Red (83%)
- Green (70%)
- Blue (57%)



- Red (82%)
- Yellow (83%)
- Blue (57%)



- Cyan (0%)
- Magenta (15%)
- Yellow (31%)
- Black (17%)



- Cyan (17%)
- Magenta (30%)
- Yellow (43%)

Brightness & Saturation Gradients


These gradients show how the XYZ color 48.1724, 48.1644, 33.9518 changes by changing the brightness by 10 percent. The first figure shows a shift by +10% for each color and the second figure -10%.


Similar to the brightness gradients but the following saturation gradients show a change of the XYZ color 48.1724, 48.1644, 33.9518 by changing the saturation by 10% instead.


 48.1724, 48.1644,
33.9518


 48.1724, 48.1644,
33.9518

370.0463,
379.4434, 334.6797

 34.1753, 33.9571,
22.5795


 86.6692, 87.4491,
66.9917

 23.1918, 22.8606,
14.0810


 111.8995,
113.2953, 89.4965

 14.8567, 14.4906,
8.0376

141.6050,
143.7900, 116.5491

 8.8045, 8.4627,
4.0309

176.1509,
179.3174, 148.5682

 4.6700, 4.3924,
1.6423

215.9026,
220.2621, 185.9722

 2.0877, 1.8954,
0.3207

261.2255,

 0.6825, 0.5456,

267.0084, 229.1798

0.0000

312.4850,
319.9407, 278.6094

■ 0.0000, 0.0000,
0.0000

■ 48.1724, 48.1644,
33.9518

■ 48.1724, 48.1644,
33.9518

■ 44.6766, 43.5615,
25.4225

■ 52.1304, 53.2066,
44.1308

■ 41.6193, 39.3776,
18.4509

■ 56.5658, 58.6942,
56.0387

■ 38.9797, 35.6005,
12.9404

■ 61.4972, 64.6416,
69.7534

■ 36.7339, 32.2148,
8.7823

■ 66.9414, 71.0605,
85.3468

■ 34.8546, 29.2034,
5.8523

■ 72.9141, 77.9620,
102.8871

■ 33.3100, 26.5472,
4.0027

■ 76.4651, 84.1709,
106.8242

■ 32.1361, 24.3930,
3.0146

■ 79.6332, 90.5073,
107.8803

■ 80.6741, 92.5889,
108.2272

Harmonies

Analogous

The Analogous color harmony consists of three colors that are next to each other on the color wheel.



51.7659, 48.1644, 38.8171



48.1724, 48.1644, 33.9518



44.1310, 48.1644, 33.5599

Triad

The Triadic color harmony groups three colors that are evenly spaced from another and form a triangle on the color wheel.



48.1724, 48.1644, 33.9518



38.5960, 48.1644, 57.3663



51.2235, 48.1644, 70.6716

Complementary

The Complementary color scheme is a pair of colors which are on the opposite of each other on the color wheel.



48.1724, 48.1644, 33.9518



39.5319, 42.6537, 67.7777

Split Complementary

Split-complementary colors differ from the complementary color scheme. The scheme consists of three colors, the original color and two neighbors of the complement color.



47.4671, 48.1644, 77.3404



48.1724, 48.1644, 33.9518



40.2721, 48.1644, 68.9337

Square

The Square scheme is like the rectangle color scheme, but the four colors are evenly spaced on the color wheel.



48.1724, 48.1644, 33.9518



38.7601, 48.1644, 45.9885



43.4659, 48.1644, 76.6613



53.5975, 48.1644, 59.4745

Rectangle

The Rectangle color scheme consists of four colors that form a rectangle on the color wheel.



48.1724, 48.1644, 33.9518



41.7388, 48.1644, 35.7951



43.4659, 48.1644, 76.6613



50.0714, 48.1644, 73.5865

Sweetspot

The Sweet Spot groups the original color and five complimentary colors.



48.1736, 48.1666, 33.9528



88.0740, 91.6119, 89.4220



45.2295, 37.6417, 47.2654



18.6229, 19.3303, 18.5130



0.0000, 0.0000, 0.0000



20.3446, 21.4041, 23.3091

Same Dimension

The Same Dimension uses a secret algorithm to generate beautiful new colors.



48.1736, 48.1666, 33.9528



70.3341, 69.2048, 43.2075



55.3468, 62.5130, 36.3439



12.2978, 12.7863, 12.4319



19.4969, 14.9268, 1.8536



1.1695, 0.9933, 0.1301

Inverse Universe

The Inverse Universe completely reimagines the original color for something new.



39.5319, 42.6537, 67.7777



55.0128, 59.4314, 103.1797



33.8913, 31.3725, 65.8975



11.6373, 12.3649, 15.0170



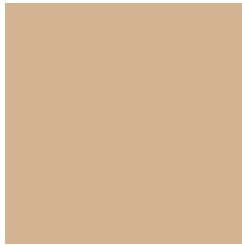
10.1772, 9.0010, 38.3935



0.6484, 0.6620, 2.1732

Previews

White Background



This preview shows how the XYZ color 48.1724, 48.1644, 33.9518 looks on a white background.

Color Contrast Check

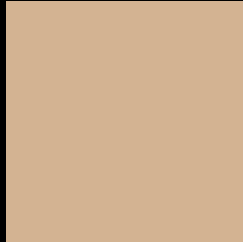
Large Text (above 18pt) WCAG AA × Fail

Any Text WCAG AA × Fail

Large Text (above 18pt) WCAG AAA × Fail

Any Text WCAG AAA × Fail

Black Background



This preview shows how the XYZ color 48.1724, 48.1644, 33.9518 looks on a black background.

Color Contrast Check

Large Text (above 18pt) WCAG AA ✓ Pass

Any Text WCAG AA ✓ Pass

Large Text (above 18pt) WCAG AAA ✓ Pass

Any Text WCAG AAA ✓ Pass

If you want to check with other color combinations, try the [Color Contrast Checker](#).

XYZ 48.1724, 48.1644, 33.9518

Background



This preview shows how black text looks on a background with the XYZ color 48.1724, 48.1644, 33.9518.



This preview shows how white text looks on a background with the XYZ color 48.1724, 48.1644,

Color Blindness Simulation

Color vision deficiency is a very complex topic, and I could not describe the different causes any better than Wikipedia does, so if you want to learn more, you should check out their [article about color blindness](#).

Dichromacy



Original Color

48.1724, 48.1644, 33.9518

Protanopia

45.2507, 48.1549, 34.9268

Deuteranopia

48.9348, 47.9667, 33.8735



Tritanopia

52.2321, 48.0739, 53.5400

Trichromacy



Original Color

48.1724, 48.1644, 33.9518

Protanomaly

46.0818, 47.9800, 34.4361

Deuteranomaly

48.8403, 48.2123, 33.9259

Tritanomaly

50.5079, 47.9346, 45.6200

Monochromacy



Original Color

48.1724, 48.1644, 33.9518

Achromatopsia

46.1135, 48.5150, 52.8328

Achromatomaly

46.5323, 48.2766, 45.3939

CSS Examples

Text

The CSS property to change the color of the text to XYZ 48.1724, 48.1644, 33.9518 is called "color". The color property can be set on classes, ids or directly on the HTML element.

This example shows how text in the color `rgb(211, 179, 146)` looks like.

```
.text, #text, p{  
    color:rgb(211, 179, 146)  
}
```

If you want to add a text shadow in that color use the text-shadow property, you can generate a text shadow directly with our [CSS Text Shadow Generator](#).

Here you see how black text with a 4 pixel rgb(211, 179, 146) colored shadow looks like.

```
.shadow{ text-shadow: 4px 4px 2px rgb(211, 179, 146) }
```

Border

The CSS property to change the border of an element to XYZ 48.1724, 48.1644, 33.9518 is called "border". The border property can be set on classes, ids or directly on the HTML element.

This example shows the color as border, it can be applied via the CSS property "border" or "border-color".

```
.border, #border, table{ border:4px solid rgb(211, 179, 146) }
```


If only the border color should be changed use the property border-color.

```
.border{ border-color:rgb(211, 179, 146) }
```

If you want to add a box shadow in that color use:

Here you see how a box with a 4 pixel rgb(211, 179, 146) colored shadow looks like.

```
.boxshadow{ -moz-box-shadow:4px 4px 4px  
4px rgb(211, 179, 146); -webkit-box-  
shadow:4px 4px 4px 4px rgb(211, 179, 146);  
box-shadow:4px 4px 4px 4px rgb(211, 179,  
146) }
```

Background

The CSS property to change the background color of an element to XYZ 48.1724, 48.1644, 33.9518 is called "background". The background property can be set on classes, ids or directly on the HTML element.

```
.background, #background, body{  
background: rgb(211, 179, 146) }
```

If only the background color should be changed can be used:

```
.background{ background-color: rgb(211,  
179, 146) }
```

This example shows the color as background, it is applied via the CSS property "background".

To optimize and compress your CSS code, you can use our [online CSS compressor and optimizer](#) based on csstidy. If you want to create a linear or radial gradient as background or border, check our [CSS Gradient Generator](#).

Hey! You found this booklet interesting? Support Converting Colors with the new Membership Option!

The pro membership hides all ads, plus gives you double the colors in the color bucket, and more awesome pro features!

[Learn more, Memberships starting at \\$2.50/m!](#)

**Follow me
on Twitter!**

@ConvertingColor