

Converting Colors

XYZ(48.1631, 48.9507, 51.6991)

Have a look what the booklet for
XYZ(48.1631, 48.9507, 51.6991)
contains.

XYZ(48.2457, 49.0216, 51.7190)	3
<i>Conversions</i>	4
<i>Details</i>	6
<i>Harmonies</i>	12
<i>Previews</i>	24
<i>Color Blindness Simulation</i>	28
<i>CSS Examples</i>	31

Color

**XYZ(48.2457, 49.0216,
51.7190)**

Conversions

Conversions Part 1

Format	Color
Hex	C4B7B7
RGB	196, 183, 183
RGB Percent	77%, 72%, 72%
CMY	0.2314, 0.2823, 0.2823
CMYK	0.00, 0.07, 0.07, 0.23
HSL	0°, 10%, 74%
HSV	0°, 7%, 77%
XYZ	48.2457, 49.0216, 51.7190
YIQ	186.8870, 7.7480, 2.7560

Conversions

Conversions Part 2

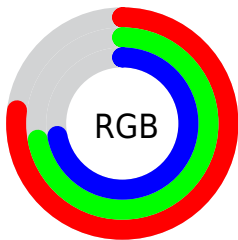
Format	Color
R_{YB}	196, 183, 183
Decimal	12892087
CIE Lab	75.46, 4.61, 1.65
CIE LCh	75, 4.892, 19.701
Yxy	49.0216, 0.3238, 0.3290
Android (android.graphics.Color)	4291082167 (0xFFC4B7B7)
YUV	186.8870, -1.9163, 7.9921
Hunter-Lab	70.0154, 0.4724, 5.2145

Details

The XYZ color **48.2457, 49.0216, 51.7190** is a light color, and the websafe version is hex **CCCCCC**. A complement of this color would be **49.2321, 53.5319, 59.9632**, and the grayscale version is **47.1789, 49.6359, 54.0535**.

A 20% lighter version of the original color is **86.9545, 88.8476, 94.2277**, and **23.1672, 23.3278, 24.4008** is the 20% darker color. If you saturate the color by 10%, you get **42.5822, 40.7347, 40.4573**, and if you desaturate by 10%, it is **54.7588, 58.5518, 64.6667**.

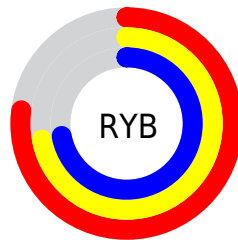
Distribution



Red (77%)

Green (72%)

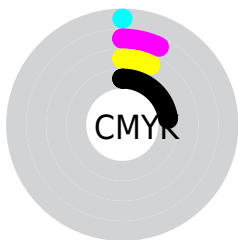
Blue (72%)



Red (77%)

Yellow (72%)

Blue (72%)

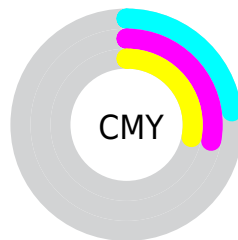


Cyan (0%)

Magenta (7%)

Yellow (7%)

Black (23%)



Cyan (23%)

Magenta (28%)

Yellow (28%)

Brightness & Saturation Gradients

These gradients show how the XYZ color 48.2457, 49.0216, 51.7190 changes by changing the brightness by 10 percent. The first figure shows a shift by +10% for each color and the second figure -10%.

Similar to the brightness gradients but the following saturation gradients show a change of the XYZ color 48.2457, 49.0216, 51.7190 by changing the saturation by 10% instead.

■ 48.2457, 49.0216,
51.7190

■ 48.2457, 49.0216,
51.7190

370.3316,
382.8273, 410.2769

■ 34.2336, 34.6366,
36.4004

■ 86.7776, 88.7235,
94.1390

■ 23.2368, 23.3831,
24.4515

112.0281,
114.8093, 122.0776

■ 14.8901, 14.8766,
15.4536

141.7554,
145.5640, 155.0600

■ 8.8281, 8.7328,
8.9882

176.3248,
181.3723, 193.5046

■ 4.6855, 4.5673,
4.6368

216.1018,
222.6183, 237.8301

■ 2.0968, 1.9957,
1.9808

261.4517,

■ 0.6875, 0.6050,

269.6866, 288.4549

0.5434

312.7399,
322.9615, 345.7977

■ 0.0000, 0.0000,
0.0000

■ 48.2457, 49.0216,
51.7190

■ 48.2457, 49.0216,
51.7190

■ 42.5822, 40.7347,
40.4573

■ 54.7588, 58.5518,
64.6667

■ 37.7293, 33.6338,
30.8093

■ 62.1501, 69.3667,
79.3624

■ 33.6513, 27.6666,
22.7020

■ 70.4521, 81.5140,
95.8688

■ 30.3080, 22.7744,
16.0558

■ 76.5753, 90.4759,
108.0354

■ 27.6558, 18.8934,
10.7836

■ 25.6464, 15.9529,
6.7896

■ 24.2252, 13.8731,
3.9651

■ 23.3288, 12.5611,
2.1840

■ 22.8736, 11.8947,
1.2799

Harmonies

Analogous

The Analogous color harmony consists of three colors that are next to each other on the color wheel.



48.3211, 49.0216, 54.2692



48.2457, 49.0216, 51.7190



47.7244, 49.0216, 49.6765

Triad

The Triadic color harmony groups three colors that are evenly spaced from another and form a triangle on the color wheel.



48.2457, 49.0216, 51.7190



45.2831, 49.0216, 50.2274



46.2842, 49.0216, 58.4144

Complementary

The Complementary color scheme is a pair of colors which are on the opposite of each other on the color wheel.



48.2457, 49.0216, 51.7190



49.2321, 53.5319, 59.9632

Split Complementary

Split-complementary colors differ from the complementary color scheme. The scheme consists of three colors, the original color and two neighbors of the complement color.



45.4807, 49.0216, 57.2552



48.2457, 49.0216, 51.7190



44.9077, 49.0216, 52.4930

Square

The Square scheme is like the rectangle color scheme, but the four colors are evenly spaced on the color wheel.



48.2457, 49.0216, 51.7190



46.0113, 49.0216, 48.8347



44.9796, 49.0216, 55.0684



47.1807, 49.0216, 58.1909

Rectangle

The Rectangle color scheme consists of four colors that form a rectangle on the color wheel.



48.2457, 49.0216, 51.7190



47.1979, 49.0216, 48.8514



44.9796, 49.0216, 55.0684



45.9944, 49.0216, 58.1721

Sweetspot

The Sweet Spot groups the original color and five complimentary colors.



48.2471, 49.0237, 51.7201



92.6346, 96.4658, 104.0977



49.6630, 49.5890, 59.1794



19.8529, 20.6846, 22.3315



0.0000, 0.0000, 0.0000



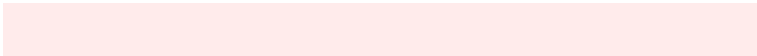
20.3446, 21.4041, 23.3091

Same Dimension

The Same Dimension uses a secret algorithm to generate beautiful new colors.



48.2471, 49.0237, 51.7201



85.7731, 86.4259, 90.4558



49.6183, 51.7661, 52.1771



10.0734, 10.0783, 10.4763



14.6280, 7.5417, 0.6847



0.6321, 0.3260, 0.0296

Inverse Universe

The Inverse Universe completely reimagines the original color for something new.



49.2321, 53.5319, 59.9632



87.9373, 96.3308, 108.5667



47.7983, 50.6642, 59.4852



10.3684, 11.4280, 12.9442



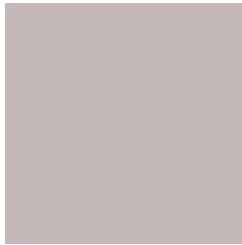
19.0788, 27.9140, 37.9390



0.8244, 1.2062, 1.6393

Previews

White Background



This preview shows how the XYZ color 48.2457, 49.0216, 51.7190 looks on a white background.

Color Contrast Check

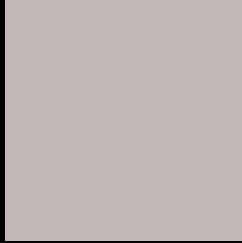
Large Text (above 18pt) WCAG AA × Fail

Any Text WCAG AA × Fail

Large Text (above 18pt) WCAG AAA × Fail

Any Text WCAG AAA × Fail

Black Background



This preview shows how the XYZ color 48.2457, 49.0216, 51.7190 looks on a black background.

Color Contrast Check

Large Text (above 18pt) WCAG AA ✓ Pass

Any Text WCAG AA ✓ Pass

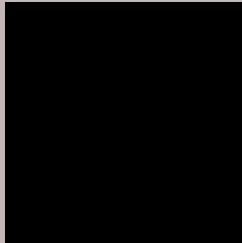
Large Text (above 18pt) WCAG AAA ✓ Pass

Any Text WCAG AAA ✓ Pass

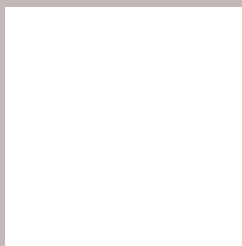
If you want to check with other color combinations, try the [Color Contrast Checker](#).

XYZ 48.2457, 49.0216, 51.7190

Background



This preview shows how black text looks on a background with the XYZ color 48.2457, 49.0216, 51.7190.



This preview shows how white text looks on a background with the XYZ color 48.2457, 49.0216,

Color Blindness Simulation

Color vision deficiency is a very complex topic, and I could not describe the different causes any better than Wikipedia does, so if you want to learn more, you should check out their [article about color blindness](#).

Dichromacy



Original Color

48.2457, 49.0216, 51.7190

Protanopia

47.2359, 49.1058, 52.3362

Deuteranopia

50.1498, 49.0823, 52.1781



Tritanopia

49.6629, 48.9936, 58.4690

Trichromacy



Original Color

48.2457, 49.0216, 51.7190

Protanomaly

47.5304, 48.9481, 52.2902

Deuteranomaly

49.5327, 49.0650, 52.2072

Tritanomaly

49.1579, 49.0878, 56.1742

Monochromacy



Original Color

48.2457, 49.0216, 51.7190

Achromatopsia

47.2335, 49.6933, 54.1160

Achromatomaly

47.6570, 49.6101, 53.5183

CSS Examples

Text

The CSS property to change the color of the text to XYZ 48.2457, 49.0216, 51.7190 is called "color". The color property can be set on classes, ids or directly on the HTML element.

This example shows how text in the color rgb(196, 183, 183) looks like.

```
.text, #text, p{  
    color:rgb(196, 183, 183)  
}
```

If you want to add a text shadow in that color use the text-shadow property, you can generate a text shadow directly with our [CSS Text Shadow Generator](#).

Here you see how black text with a 4 pixel rgb(196, 183, 183) colored shadow looks like.

```
.shadow{ text-shadow: 4px 4px 2px rgb(196, 183, 183) }
```

Border

The CSS property to change the border of an element to XYZ 48.2457, 49.0216, 51.7190 is called "border". The border property can be set on classes, ids or directly on the HTML element.

This example shows the color as border, it can be applied via the CSS property "border" or "border-color".

```
.border, #border, table{ border:4px solid rgb(196, 183, 183) }
```


If only the border color should be changed use the property `border-color`.

```
.border{ border-color:rgb(196, 183, 183) }
```

If you want to add a box shadow in that color use:

Here you see how a box with a 4 pixel `rgb(196, 183, 183)` colored shadow looks like.

```
.boxshadow{ -moz-box-shadow:4px 4px 4px  
4px rgb(196, 183, 183); -webkit-box-  
shadow:4px 4px 4px 4px rgb(196, 183, 183);  
box-shadow:4px 4px 4px 4px rgb(196, 183,  
183) }
```

Background

The CSS property to change the background color of an element to XYZ 48.2457, 49.0216, 51.7190 is called "background". The background property can be set on classes, ids or directly on the HTML element.

```
.background, #background, body{  
background: rgb(196, 183, 183) }
```

If only the background color should be changed can be used:

```
.background{ background-color: rgb(196,  
183, 183) }
```

This example shows the color as background, it is applied via the CSS property "background".

To optimize and compress your CSS code, you can use our [online CSS compressor and optimizer](#) based on csstidy. If you want to create a linear or radial gradient as background or border, check our [CSS Gradient Generator](#).

Hey! You found this booklet interesting? Support Converting Colors with the new Membership Option!

The pro membership hides all ads, plus gives you double the colors in the color bucket, and more awesome pro features!

[Learn more, Memberships starting at \\$2.50/m!](#)

**Follow me
on Twitter!**

@ConvertingColor