

Converting Colors

XYZ(48.2689, 48.3915, 48.3269)

Have a look what the booklet for
XYZ(48.2689, 48.3915, 48.3269)
contains.

XYZ(48.2791, 48.5014, 48.4121)	3
<i>Conversions</i>	4
<i>Details</i>	6
<i>Harmonies</i>	12
<i>Previews</i>	24
<i>Color Blindness Simulation</i>	28
<i>CSS Examples</i>	31

Color

**XYZ(48.2791, 48.5014,
48.4121)**

Conversions

Conversions Part 1

Format	Color
Hex	C8B5B1
RGB	200, 181, 177
RGB Percent	78%, 71%, 69%
CMY	0.2157, 0.2902, 0.3059
CMYK	0.00, 0.09, 0.11, 0.22
HSL	10°, 17%, 74%
HSV	10°, 11%, 78%
XYZ	48.2791, 48.5014, 48.4121
YIQ	186.2250, 12.6080, 2.7840

Conversions

Conversions Part 2

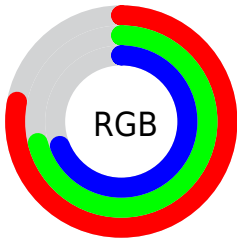
Format	Color
R _{YB}	200, 182, 177
Decimal	13153713
CIE Lab	75.14, 6.10, 4.49
CIE LCh	75, 7.571, 36.361
Yxy	48.5014, 0.3325, 0.3340
Android (android.graphics.Color)	4291343793 (0xFFC8B5B1)
YUV	186.2250, -4.5479, 12.0807
Hunter-Lab	69.6429, 1.8677, 7.5348

Details

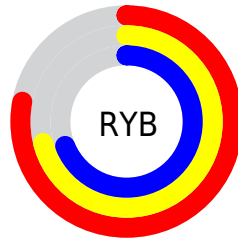
The XYZ color **48.2791, 48.5014, 48.4121** is a light color, and the websafe version is hex **CCCCCC**. A complement of this color would be **48.2966, 52.9962, 62.3279**, and the grayscale version is **46.8191, 49.2573, 53.6412**.

A 20% lighter version of the original color is **86.2322, 87.7116, 89.4759**, and **23.2113, 23.0046, 22.2857** is the 20% darker color. If you saturate the color by 10%, you get **43.2682, 41.4391, 37.6169**, and if you desaturate by 10%, it is **53.9832, 56.4814, 60.8810**.

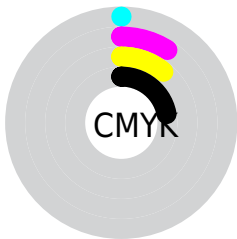
Distribution



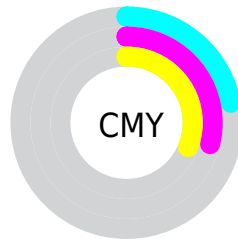
- Red (78%)
- Green (71%)
- Blue (69%)



- Red (78%)
- Yellow (71%)
- Blue (69%)



- Cyan (0%)
- Magenta (9%)
- Yellow (11%)
- Black (22%)



- Cyan (22%)
- Magenta (29%)
- Yellow (31%)

Brightness & Saturation Gradients

These gradients show how the XYZ color 48.2791, 48.5014, 48.4121 changes by changing the brightness by 10 percent. The first figure shows a shift by +10% for each color and the second figure -10%.

Similar to the brightness gradients but the following saturation gradients show a change of the XYZ color 48.2791, 48.5014, 48.4121 by changing the saturation by 10% instead.

■ 48.2791, 48.5014,
48.4121

■ 48.2791, 48.5014,
48.4121

370.4616,
380.7761, 396.9790

■ 34.2601, 34.2241,
33.7910

■ 86.8270, 87.9505,
89.1896

■ 23.2573, 23.0658,
22.4571

112.0866,
113.8911, 116.1831

■ 14.9054, 14.6421,
13.9916

141.8239,
144.4882, 148.1379

■ 8.8389, 8.5686,
7.9761

176.4041,
180.1263, 185.4724

■ 4.6925, 4.4609,
3.9921

216.1926,
221.1897, 228.6052

■ 2.1009, 1.9346,
1.6210

261.5548,

■ 0.6897, 0.5690,

268.0629, 277.9549

0.3058

312.8560,
321.1303, 333.9400

■ 0.0000, 0.0000,
0.0000

■ 48.2791, 48.5014,
48.4121

■ 48.2791, 48.5014,
48.4121

■ 43.2682, 41.4391,
37.6169

■ 53.9832, 56.4814,
60.8810

■ 38.9199, 35.2552,
28.4210

■ 60.4015, 65.4039,
75.0874

■ 35.2073, 29.9172,
20.7489

■ 67.5592, 75.3004,
91.0957

■ 32.1001, 25.3880,
14.5180

■ 75.1548, 86.0698,
107.2598

■ 29.5655, 21.6278,
9.6376

■ 77.6297, 91.0195,
108.0847

■ 27.5674, 18.5932,
6.0069

■ 26.0654, 16.2367,
3.5105

■ 25.0131, 14.5044,
2.0116

■ 24.4152, 13.4706,
1.3133

Harmonies

Analogous

The Analogous color harmony consists of three colors that are next to each other on the color wheel.



48.7992, 48.5014, 51.9686



48.2791, 48.5014, 48.4121



47.1762, 48.5014, 46.1208

Triad

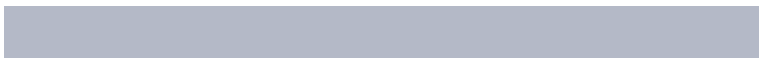
The Triadic color harmony groups three colors that are evenly spaced from another and form a triangle on the color wheel.



48.2791, 48.5014, 48.4121



43.7002, 48.5014, 49.8076



46.3951, 48.5014, 60.7655

Complementary

The Complementary color scheme is a pair of colors which are on the opposite of each other on the color wheel.



48.2791, 48.5014, 48.4121



48.2966, 52.9962, 62.3279

Split Complementary

Split-complementary colors differ from the complementary color scheme. The scheme consists of three colors, the original color and two neighbors of the complement color.



45.0386, 48.5014, 60.1161



48.2791, 48.5014, 48.4121



43.5005, 48.5014, 53.6600

Square

The Square scheme is like the rectangle color scheme, but the four colors are evenly spaced on the color wheel.



48.2791, 48.5014, 48.4121



44.5369, 48.5014, 46.8978



43.9858, 48.5014, 57.4660



47.6975, 48.5014, 59.1988

Rectangle

The Rectangle color scheme consists of four colors that form a rectangle on the color wheel.



48.2791, 48.5014, 48.4121



46.2685, 48.5014, 45.5520



43.9858, 48.5014, 57.4660



45.9301, 48.5014, 60.8002

Sweetspot

The Sweet Spot groups the original color and five complimentary colors.



48.2804, 48.5035, 48.4131



91.8599, 95.5517, 101.8809



49.5250, 47.7175, 58.9248



19.4835, 20.2030, 21.4152



0.0000, 0.0000, 0.0000



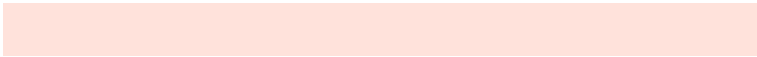
20.3446, 21.4041, 23.3091

Same Dimension

The Same Dimension uses a secret algorithm to generate beautiful new colors.



48.2804, 48.5035, 48.4131



81.1301, 80.5191, 78.4908



50.6787, 53.3001, 49.2126



10.7807, 10.9304, 11.1043



15.5702, 8.6576, 0.8504



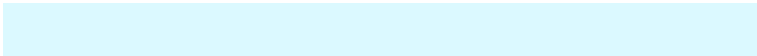
0.7846, 0.5046, 0.0560

Inverse Universe

The Inverse Universe completely reimagines the original color for something new.



48.2966, 52.9962, 62.3279



81.1633, 89.9457, 107.6912



45.8368, 48.0765, 61.5080



10.7836, 11.7413, 13.6154



15.2638, 19.9216, 37.7851



0.7652, 1.0283, 1.8033

Previews

White Background



This preview shows how the XYZ color 48.2791, 48.5014, 48.4121 looks on a white background.

Color Contrast Check

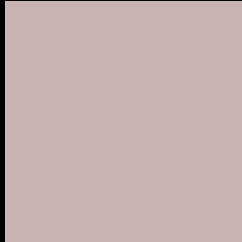
Large Text (above 18pt) WCAG AA × Fail

Any Text WCAG AA × Fail

Large Text (above 18pt) WCAG AAA × Fail

Any Text WCAG AAA × Fail

Black Background



This preview shows how the XYZ color 48.2791, 48.5014, 48.4121 looks on a black background.

Color Contrast Check

Large Text (above 18pt) WCAG AA ✓ Pass

Any Text WCAG AA ✓ Pass

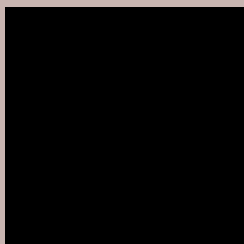
Large Text (above 18pt) WCAG AAA ✓ Pass

Any Text WCAG AAA ✓ Pass

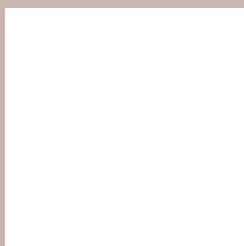
If you want to check with other color combinations, try the [Color Contrast Checker](#).

XYZ 48.2791, 48.5014, 48.4121

Background



This preview shows how black text looks on a background with the XYZ color 48.2791, 48.5014, 48.4121.



This preview shows how white text looks on a background with the XYZ color 48.2791, 48.5014,

Color Blindness Simulation

Color vision deficiency is a very complex topic, and I could not describe the different causes any better than Wikipedia does, so if you want to learn more, you should check out their [article about color blindness](#).

Dichromacy



Original Color

48.2791, 48.5014, 48.4121

Protanopia

46.5124, 48.4828, 49.5545

Deuteranopia

49.5095, 48.5363, 48.3540



Tritanopia

50.1029, 48.6470, 57.2012

Trichromacy



Original Color

48.2791, 48.5014, 48.4121

Protanomaly

47.2175, 48.5507, 49.0021

Deuteranomaly

49.1589, 48.6542, 48.3952

Tritanomaly

49.3783, 48.6479, 53.8012

Monochromacy



Original Color

48.2791, 48.5014, 48.4121

Achromatopsia

46.6715, 49.1021, 53.4722

Achromatomaly

47.1736, 48.7762, 51.7282

CSS Examples

Text

The CSS property to change the color of the text to XYZ 48.2791, 48.5014, 48.4121 is called "color". The color property can be set on classes, ids or directly on the HTML element.

This example shows how text in the color `rgb(200, 181, 177)` looks like.

```
.text, #text, p{  
    color:rgb(200, 181, 177)  
}
```

If you want to add a text shadow in that color use the text-shadow property, you can generate a text shadow directly with our [CSS Text Shadow Generator](#).

Here you see how black text with a 4 pixel rgb(200, 181, 177) colored shadow looks like.

```
.shadow{ text-shadow: 4px 4px 2px rgb(200, 181, 177) }
```

Border

The CSS property to change the border of an element to XYZ 48.2791, 48.5014, 48.4121 is called "border". The border property can be set on classes, ids or directly on the HTML element.

This example shows the color as border, it can be applied via the CSS property "border" or "border-color".

```
.border, #border, table{ border:4px solid rgb(200, 181, 177) }
```


If only the border color should be changed use the property `border-color`.

```
.border{ border-color:rgb(200, 181, 177) }
```

If you want to add a box shadow in that color use:

Here you see how a box with a 4 pixel `rgb(200, 181, 177)` colored shadow looks like.

```
.boxshadow{ -moz-box-shadow:4px 4px 4px  
4px rgb(200, 181, 177); -webkit-box-  
shadow:4px 4px 4px 4px rgb(200, 181, 177);  
box-shadow:4px 4px 4px 4px rgb(200, 181,  
177) }
```

Background

The CSS property to change the background color of an element to XYZ 48.2791, 48.5014, 48.4121 is called "background". The background property can be set on classes, ids or directly on the HTML element.

```
.background, #background, body{  
background: rgb(200, 181, 177) }
```

If only the background color should be changed can be used:

```
.background{ background-color: rgb(200,  
181, 177) }
```

This example shows the color as background, it is applied via the CSS property "background".

To optimize and compress your CSS code, you can use our [online CSS compressor and optimizer](#) based on csstidy. If you want to create a linear or radial gradient as background or border, check our [CSS Gradient Generator](#).

Hey! You found this booklet interesting? Support Converting Colors with the new Membership Option!

The pro membership hides all ads, plus gives you double the colors in the color bucket, and more awesome pro features!

[Learn more, Memberships starting at \\$2.50/m!](#)

**Follow me
on Twitter!**

@ConvertingColor