

Converting Colors

XYZ(48.2790, 48.2797, 47.2695)

Have a look what the booklet for
XYZ(48.2790, 48.2797, 47.2695)
contains.

XYZ(48.1465, 48.1552, 47.3147)	3
<i>Conversions</i>	4
<i>Details</i>	6
<i>Harmonies</i>	12
<i>Previews</i>	24
<i>Color Blindness Simulation</i>	28
<i>CSS Examples</i>	31

Color

**XYZ(48.1465, 48.1552,
47.3147)**

Conversions

Conversions Part 1

Format	Color
Hex	C9B4AF
RGB	201, 180, 175
RGB Percent	79%, 71%, 69%
CMY	0.2118, 0.2941, 0.3137
CMYK	0.00, 0.10, 0.13, 0.21
HSL	12°, 19%, 74%
HSV	12°, 13%, 79%
XYZ	48.1465, 48.1552, 47.3147
YIQ	185.7090, 14.1210, 2.8970

Conversions

Conversions Part 2

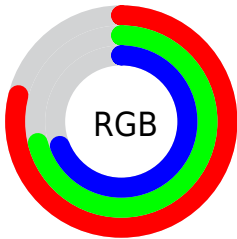
Format	Color
R _Y B	201, 181, 175
Decimal	13218991
CIE Lab	74.92, 6.67, 5.28
CIE LCh	75, 8.504, 38.351
Yxy	48.1552, 0.3352, 0.3353
Android (android.graphics.Color)	4291409071 (0xFFC9B4AF)
YUV	185.7090, -5.2795, 13.4102
Hunter-Lab	69.3939, 2.4064, 8.1502

Details

The XYZ color **48.1465, 48.1552, 47.3147** is a light color, and the websafe version is hex **CCCCCC**. A complement of this color would be **47.9614, 52.8096, 62.9242**, and the grayscale version is **46.5335, 48.9569, 53.3140**.

A 20% lighter version of the original color is **85.5184, 86.9641, 87.1414**, and **23.1971, 22.8118, 21.9194** is the 20% darker color. If you saturate the color by 10%, you get **43.2306, 41.2507, 36.6505**, and if you desaturate by 10%, it is **53.7427, 55.9490, 59.6565**.

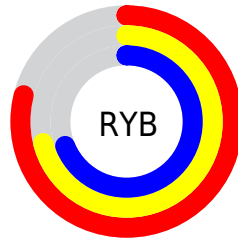
Distribution



Red (79%)

Green (71%)

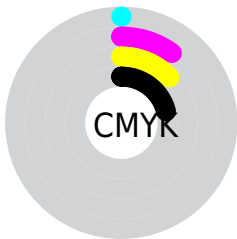
Blue (69%)



Red (79%)

Yellow (71%)

Blue (69%)

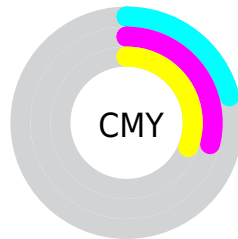


Cyan (0%)

Magenta (10%)

Yellow (13%)

Black (21%)



Cyan (21%)


Magenta (29%)


Yellow (31%)

Brightness & Saturation Gradients


These gradients show how the XYZ color 48.1465, 48.1552, 47.3147 changes by changing the brightness by 10 percent. The first figure shows a shift by +10% for each color and the second figure -10%.


Similar to the brightness gradients but the following saturation gradients show a change of the XYZ color 48.1465, 48.1552, 47.3147 by changing the saturation by 10% instead.


 48.1465, 48.1552,
47.3147

 48.1465, 48.1552,
47.3147


369.9455,
379.4070, 392.4994

 34.1547, 33.9498,
32.9284


 86.6309, 87.4354,
87.5381

 23.1759, 22.8550,
21.8009


111.8541,
113.2791, 114.2122

 14.8448, 14.4865,
13.5138


141.5518,
143.7709, 145.8194

 8.7962, 8.4598,
7.6484

176.0894,
179.2953, 182.7781

 4.6645, 4.3906,
3.7863

215.8322,
220.2368, 225.5069

 2.0845, 1.8943,
1.5088

261.1456,

 0.6808, 0.5450,

266.9796, 274.4244

0.2245

312.3949,
319.9082, 329.9490

■ 0.0000, 0.0000,
0.0000

■ 48.1465, 48.1552,
47.3147

■ 48.1465, 48.1552,
47.3147

■ 43.2306, 41.2507,
36.6505

■ 53.7427, 55.9490,
59.6565

■ 38.9649, 35.1976,
27.5885

■ 60.0400, 64.6557,
73.7411

■ 35.3229, 29.9645,
20.0516

■ 67.0629, 74.3060,
89.6337

■ 32.2747, 25.5159,
13.9556

■ 74.7693, 84.9011,
107.0545

■ 29.7879, 21.8134,
9.2078

■ 77.8976, 91.1576,
108.0973

■ 27.8268, 18.8155,
5.7047

■ 26.3513, 16.4762,
3.3276

■ 25.3153, 14.7440,
1.9343

■ 24.8028, 13.8480,
1.3657

Harmonies

Analogous

The Analogous color harmony consists of three colors that are next to each other on the color wheel.



48.7815, 48.1552, 51.2032



48.1465, 48.1552, 47.3147



46.8780, 48.1552, 44.8952

Triad

The Triadic color harmony groups three colors that are evenly spaced from another and form a triangle on the color wheel.



48.1465, 48.1552, 47.3147



43.0564, 48.1552, 49.3476



46.2042, 48.1552, 61.3361

Complementary

The Complementary color scheme is a pair of colors which are on the opposite of each other on the color wheel.



48.1465, 48.1552, 47.3147



47.9614, 52.8096, 62.9242

Split Complementary

Split-complementary colors differ from the complementary color scheme. The scheme consists of three colors, the original color and two neighbors of the complement color.



44.6797, 48.1552, 60.7701



48.1465, 48.1552, 47.3147



42.8852, 48.1552, 53.6819

Square

The Square scheme is like the rectangle color scheme, but the four colors are evenly spaced on the color wheel.



48.1465, 48.1552, 47.3147



43.9462, 48.1552, 46.0220



43.4732, 48.1552, 57.9073



47.6437, 48.1552, 59.4129

Rectangle

The Rectangle color scheme consists of four colors that form a rectangle on the color wheel.



48.1465, 48.1552, 47.3147



45.8558, 48.1552, 44.3579



43.4732, 48.1552, 57.9073



45.6844, 48.1552, 61.4327

Sweetspot

The Sweet Spot groups the original color and five complimentary colors.



48.1478, 48.1573, 47.3157



90.8793, 94.2171, 99.6221



49.4083, 47.0742, 58.8465



19.2887, 19.9397, 20.9615



0.0000, 0.0000, 0.0000



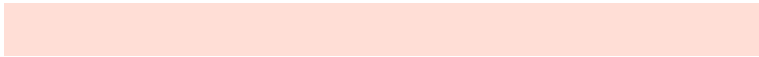
20.3446, 21.4041, 23.3091

Same Dimension

The Same Dimension uses a secret algorithm to generate beautiful new colors.



48.1478, 48.1573, 47.3157



79.5383, 78.3956, 74.6921



50.8442, 53.5500, 48.2145



10.7964, 10.9619, 11.1096



15.6460, 8.8091, 0.8757



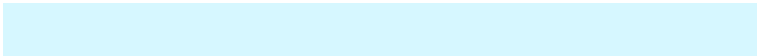
0.7917, 0.5188, 0.0584

Inverse Universe

The Inverse Universe completely reimagines the original color for something new.



47.9614, 52.8096, 62.9242



79.1459, 88.1582, 107.4525



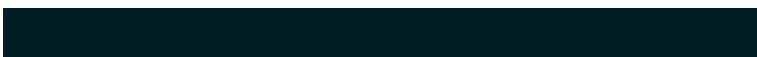
45.2040, 47.2949, 62.0051



10.7666, 11.7072, 13.6097



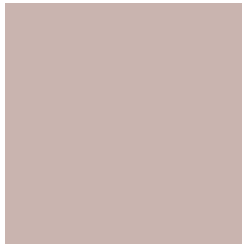
14.8518, 19.0974, 37.6478



0.7491, 0.9959, 1.7979

Previews

White Background



This preview shows how the XYZ color 48.1465, 48.1552, 47.3147 looks on a white background.

Color Contrast Check

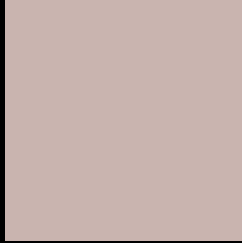
Large Text (above 18pt) WCAG AA × Fail

Any Text WCAG AA × Fail

Large Text (above 18pt) WCAG AAA × Fail

Any Text WCAG AAA × Fail

Black Background



This preview shows how the XYZ color 48.1465, 48.1552, 47.3147 looks on a black background.

Color Contrast Check

Large Text (above 18pt) WCAG AA ✓ Pass

Any Text WCAG AA ✓ Pass

Large Text (above 18pt) WCAG AAA ✓ Pass

Any Text WCAG AAA ✓ Pass

If you want to check with other color combinations, try the [Color Contrast Checker](#).

XYZ 48.1465, 48.1552, 47.3147

Background



This preview shows how black text looks on a background with the XYZ color 48.1465, 48.1552, 47.3147.



This preview shows how white text looks on a background with the XYZ color 48.1465, 48.1552,

Color Blindness Simulation

Color vision deficiency is a very complex topic, and I could not describe the different causes any better than Wikipedia does, so if you want to learn more, you should check out their [article about color blindness](#).

Dichromacy



Original Color

48.1465, 48.1552, 47.3147

Protanopia

46.3115, 48.4025, 48.4967

Deuteranopia

49.1119, 48.0577, 47.2450



Tritanopia

49.9530, 48.2989, 55.9800

Trichromacy



Original Color

48.1465, 48.1552, 47.3147

Protanomaly

47.0181, 48.4709, 47.9520

Deuteranomaly

48.7598, 48.1727, 47.2858

Tritanomaly

49.2342, 48.2995, 52.6268

Monochromacy



Original Color

48.1465, 48.1552, 47.3147

Achromatopsia

46.6715, 49.1021, 53.4722

Achromatomaly

47.0698, 48.7347, 51.1819

CSS Examples

Text

The CSS property to change the color of the text to XYZ 48.1465, 48.1552, 47.3147 is called "color". The color property can be set on classes, ids or directly on the HTML element.

This example shows how text in the color `rgb(201, 180, 175)` looks like.

```
.text, #text, p{  
    color:rgb(201, 180, 175)  
}
```

If you want to add a text shadow in that color use the text-shadow property, you can generate a text shadow directly with our [CSS Text Shadow Generator](#).

Here you see how black text with a 4 pixel rgb(201, 180, 175) colored shadow looks like.

```
.shadow{ text-shadow: 4px 4px 2px rgb(201, 180, 175) }
```

Border

The CSS property to change the border of an element to XYZ 48.1465, 48.1552, 47.3147 is called "border". The border property can be set on classes, ids or directly on the HTML element.

This example shows the color as border, it can be applied via the CSS property "border" or "border-color".

```
.border, #border, table{ border:4px solid rgb(201, 180, 175) }
```


If only the border color should be changed use the property border-color.

```
.border{ border-color:rgb(201, 180, 175) }
```

If you want to add a box shadow in that color use:

Here you see how a box with a 4 pixel rgb(201, 180, 175) colored shadow looks like.

```
.boxshadow{ -moz-box-shadow:4px 4px 4px  
4px rgb(201, 180, 175); -webkit-box-  
shadow:4px 4px 4px 4px rgb(201, 180, 175);  
box-shadow:4px 4px 4px 4px rgb(201, 180,  
175) }
```

Background

The CSS property to change the background color of an element to XYZ 48.1465, 48.1552, 47.3147 is called "background". The background property can be set on classes, ids or directly on the HTML element.

```
.background, #background, body{  
background: rgb(201, 180, 175) }
```

If only the background color should be changed can be used:

```
.background{ background-color: rgb(201,  
180, 175) }
```

This example shows the color as background, it is applied via the CSS property "background".

To optimize and compress your CSS code, you can use our [online CSS compressor and optimizer](#) based on csstidy. If you want to create a linear or radial gradient as background or border, check our [CSS Gradient Generator](#).

Hey! You found this booklet interesting? Support Converting Colors with the new Membership Option!

The pro membership hides all ads, plus gives you double the colors in the color bucket, and more awesome pro features!

[Learn more, Memberships starting at \\$2.50/m!](#)

**Follow me
on Twitter!**

@ConvertingColor