

Converting Colors

XYZ(48.2981, 45.2573, 38.0882)

Have a look what the booklet for
XYZ(48.2981, 45.2573, 38.0882)
contains.

XYZ(48.2981, 45.2573, 38.0882)	3
<i>Conversions</i>	4
<i>Details</i>	6
<i>Harmonies</i>	12
<i>Previews</i>	24
<i>Color Blindness Simulation</i>	28
<i>CSS Examples</i>	31

Color

**XYZ(48.2981, 45.2573,
38.0882)**

Conversions

Conversions Part 1

Format	Color
Hex	D7A99D
RGB	215, 169, 157
RGB Percent	84%, 66%, 62%
CMY	0.1569, 0.3372, 0.3843
CMYK	0.00, 0.21, 0.27, 0.16
HSL	12°, 42%, 73%
HSV	12°, 27%, 84%
XYZ	48.2981, 45.2573, 38.0882
YIQ	181.3860, 31.2680, 6.0200

Conversions

Conversions Part 2

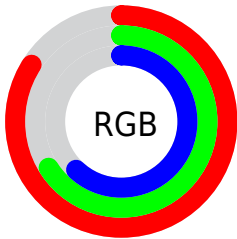
Format	Color
R_{YB}	215, 172, 157
Decimal	14133661
CIE _{Lab}	73.06, 15.11, 12.63
CIE _{LCh}	73, 19.696, 39.896
Yxy	45.2573, 0.3669, 0.3438
Android (android.graphics.Color)	4292323741 (0xFFD7A99D)
YUV	181.3860, -12.0223, 29.4795
Hunter-Lab	67.2735, 10.4229, 13.5233

Details

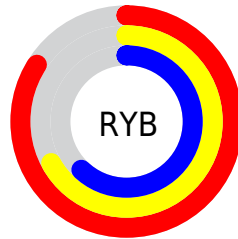
The XYZ color **48.2981, 45.2573, 38.0882** is a light color, and the websafe version is hex **CC9999**. A complement of this color would be **47.5257, 54.7847, 72.3599**, and the grayscale version is **44.1821, 46.4830, 50.6200**.

A 20% lighter version of the original color is **79.7793, 79.3248, 73.3937**, and **23.2609, 21.1341, 16.4890** is the 20% darker color. If you saturate the color by 10%, you get **43.6540, 38.6525, 28.2670**, and if you desaturate by 10%, it is **53.6814, 52.8228, 49.7504**.

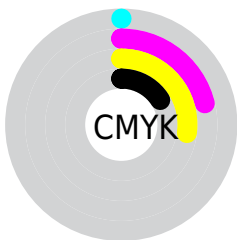
Distribution



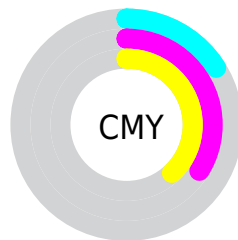
- Red (84%)
- Green (66%)
- Blue (62%)



- Red (84%)
- Yellow (67%)
- Blue (62%)



- Cyan (0%)
- Magenta (21%)
- Yellow (27%)
- Black (16%)





- Cyan (16%)
- Magenta (34%)
- Yellow (38%)

Brightness & Saturation Gradients


These gradients show how the XYZ color 48.2981, 45.2573, 38.0882 changes by changing the brightness by 10 percent. The first figure shows a shift by +10% for each color and the second figure -10%.


Similar to the brightness gradients but the following saturation gradients show a change of the XYZ color 48.2981, 45.2573, 38.0882 by changing the saturation by 10% instead.


 48.2981, 45.2573,
38.0882


 48.2981, 45.2573,
38.0882


370.5355,
367.8146, 353.3077

 34.2753, 31.6601,
25.7488

 86.8551, 83.1064,
73.4482

 23.2690, 21.1020,
16.4117


 112.1199,
108.1271, 97.3059

 14.9141, 13.1986,
9.6585


141.8628,
137.7244, 125.8401

 8.8450, 7.5655,
5.0705

176.4491,
172.2828, 159.4694

 4.6965, 3.8182,
2.2292

216.2442,
212.1867, 198.6122

 2.1032, 1.5724,
0.6911

261.6134,

 0.6910, 0.3389,

257.8203, 243.6872

0.0000

312.9220,
309.5682, 295.1128

■ 0.0000, 0.0000,
0.0000

■ 48.2981, 45.2573,
38.0882

■ 48.2981, 45.2573,
38.0882

■ 43.6540, 38.6525,
28.2670

■ 53.6814, 52.8228,
49.7504

■ 39.7125, 32.9635,
20.1894

■ 59.8308, 61.3791,
63.3383

■ 36.4395, 28.1513,
13.7536

■ 66.7766, 70.9626,
78.9350

■ 33.7965, 24.1715,
8.8457

■ 74.5462, 81.6060,
96.6177

■ 31.7408, 20.9757,
5.3373

■ 81.5976, 92.7135,
108.2026

■ 30.2237, 18.5102,
3.0785

■ 81.8344, 93.1871,
108.2815

■ 29.1859, 16.7131,
1.8744

■ 28.9438, 16.2859,
1.6180

Harmonies

Analogous

The Analogous color harmony consists of three colors that are next to each other on the color wheel.



49.8736, 45.2573, 46.0899



48.2981, 45.2573, 38.0882



45.3319, 45.2573, 33.5292

Triad

The Triadic color harmony groups three colors that are evenly spaced from another and form a triangle on the color wheel.



48.2981, 45.2573, 38.0882



37.0927, 45.2573, 43.0428



44.1637, 45.2573, 70.4178

Complementary

The Complementary color scheme is a pair of colors which are on the opposite of each other on the color wheel.



48.2981, 45.2573, 38.0882



47.5257, 54.7847, 72.3599

Split Complementary

Split-complementary colors differ from the complementary color scheme. The scheme consists of three colors, the original color and two neighbors of the complement color.



40.7798, 45.2573, 69.3157



48.2981, 45.2573, 38.0882



36.8172, 45.2573, 52.6088

Square

The Square scheme is like the rectangle color scheme, but the four colors are evenly spaced on the color wheel.



48.2981, 45.2573, 38.0882



38.9071, 45.2573, 36.1140



38.1332, 45.2573, 62.4681



47.4038, 45.2573, 65.3043

Rectangle

The Rectangle color scheme consists of four colors that form a rectangle on the color wheel.



48.2981, 45.2573, 38.0882



43.0277, 45.2573, 32.6434



38.1332, 45.2573, 62.4681



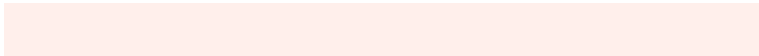
43.0037, 45.2573, 70.7763

Sweetspot

The Sweet Spot groups the original color and five complimentary colors.



48.2993, 45.2594, 38.0891



86.9921, 88.8640, 90.8621



50.9089, 42.8924, 62.3464



18.3139, 18.5960, 18.7685



0.0000, 0.0000, 0.0000



20.3446, 21.4041, 23.3091

Same Dimension

The Same Dimension uses a secret algorithm to generate beautiful new colors.



48.2993, 45.2594, 38.0891



67.2977, 61.2447, 48.0128



54.2133, 57.0873, 40.0604



12.6294, 12.8331, 12.9721



17.3736, 9.8645, 0.9883



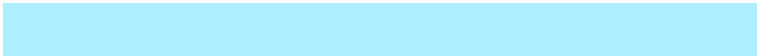
1.1084, 0.7160, 0.0798

Inverse Universe

The Inverse Universe completely reimagines the original color for something new.



47.5257, 54.7847, 72.3599



65.9791, 77.3638, 106.0630



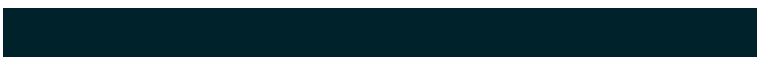
41.3843, 42.5018, 70.3127



12.5638, 13.6511, 15.9103



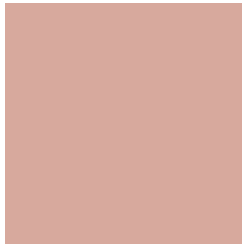
16.0688, 20.3993, 41.5437



1.0254, 1.3428, 2.5244

Previews

White Background



This preview shows how the XYZ color 48.2981, 45.2573, 38.0882 looks on a white background.

Color Contrast Check

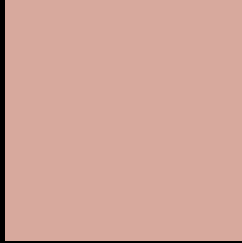
Large Text (above 18pt) WCAG AA × Fail

Any Text WCAG AA × Fail

Large Text (above 18pt) WCAG AAA × Fail

Any Text WCAG AAA × Fail

Black Background



This preview shows how the XYZ color 48.2981, 45.2573, 38.0882 looks on a black background.

Color Contrast Check

Large Text (above 18pt) WCAG AA ✓ Pass

Any Text WCAG AA ✓ Pass

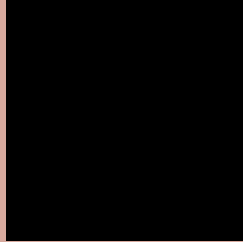
Large Text (above 18pt) WCAG AAA ✓ Pass

Any Text WCAG AAA ✓ Pass

If you want to check with other color combinations, try the [Color Contrast Checker](#).

XYZ 48.2981, 45.2573, 38.0882

Background



This preview shows how black text looks on a background with the XYZ color 48.2981, 45.2573, 38.0882.



This preview shows how white text looks on a background with the XYZ color 48.2981, 45.2573,

Color Blindness Simulation

Color vision deficiency is a very complex topic, and I could not describe the different causes any better than Wikipedia does, so if you want to learn more, you should check out their [article about color blindness](#).

Dichromacy



Original Color

48.2981, 45.2573, 38.0882

Protanopia

43.1352, 45.4136, 40.6747

Deuteranopia

46.1212, 45.2666, 37.7590



Tritanopia

50.3882, 45.2788, 48.7318

Trichromacy



Original Color

48.2981, 45.2573, 38.0882

Protanomaly

44.7011, 45.0683, 39.6008

Deuteranomaly

47.0478, 45.4607, 37.7476

Tritanomaly

49.4883, 45.1766, 44.6397

Monochromacy



Original Color

48.2981, 45.2573, 38.0882

Achromatopsia

43.9204, 46.2077, 50.3202

Achromatomaly

45.1609, 45.7603, 45.4821

CSS Examples

Text

The CSS property to change the color of the text to XYZ 48.2981, 45.2573, 38.0882 is called "color". The color property can be set on classes, ids or directly on the HTML element.

This example shows how text in the color `rgb(215, 169, 157)` looks like.

```
.text, #text, p{  
    color:rgb(215, 169, 157)  
}
```

If you want to add a text shadow in that color use the text-shadow property, you can generate a text shadow directly with our [CSS Text Shadow Generator](#).

Here you see how black text with a 4 pixel rgb(215, 169, 157) colored shadow looks like.

```
.shadow{ text-shadow: 4px 4px 2px rgb(215, 169, 157) }
```

Border

The CSS property to change the border of an element to XYZ 48.2981, 45.2573, 38.0882 is called "border". The border property can be set on classes, ids or directly on the HTML element.

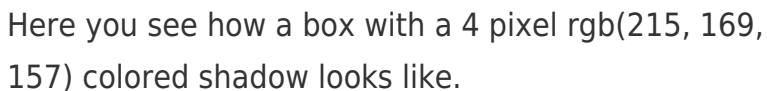
This example shows the color as border, it can be applied via the CSS property "border" or "border-color".

```
.border, #border, table{ border:4px solid rgb(215, 169, 157) }
```


If only the border color should be changed use the property `border-color`.

```
.border{ border-color:rgb(215, 169, 157) }
```

If you want to add a box shadow in that color use:



Here you see how a box with a 4 pixel `rgb(215, 169, 157)` colored shadow looks like.

```
.boxshadow{ -moz-box-shadow:4px 4px 4px 4px rgb(215, 169, 157); -webkit-box-shadow:4px 4px 4px 4px rgb(215, 169, 157); box-shadow:4px 4px 4px 4px rgb(215, 169, 157) }
```

Background

The CSS property to change the background color of an element to XYZ 48.2981, 45.2573, 38.0882 is called "background". The background property can be set on classes, ids or directly on the HTML element.

```
.background, #background, body{  
background: rgb(215, 169, 157) }
```

If only the background color should be changed can be used:

```
.background{ background-color: rgb(215,  
169, 157) }
```

This example shows the color as background, it is applied via the CSS property "background".

To optimize and compress your CSS code, you can use our [online CSS compressor and optimizer](#) based on csstidy. If you want to create a linear or radial gradient as background or border, check our [CSS Gradient Generator](#).

Hey! You found this booklet interesting? Support Converting Colors with the new Membership Option!

The pro membership hides all ads, plus gives you double the colors in the color bucket, and more awesome pro features!

[Learn more, Memberships starting at \\$2.50/m!](#)

**Follow me
on Twitter!**

@ConvertingColor