

Converting Colors

XYZ(48.3344, 47.6605, 45.2075)

Have a look what the booklet for
XYZ(48.3344, 47.6605, 45.2075)
contains.

XYZ(48.4479, 47.7602, 45.1932)	3
<i>Conversions</i>	4
<i>Details</i>	6
<i>Harmonies</i>	12
<i>Previews</i>	24
<i>Color Blindness Simulation</i>	28
<i>CSS Examples</i>	31

Color

**XYZ(48.4479, 47.7602,
45.1932)**

Conversions

Conversions Part 1

Format	Color
Hex	CDB2AB
RGB	205, 178, 171
RGB Percent	80%, 70%, 67%
CMY	0.1961, 0.3019, 0.3294
CMYK	0.00, 0.13, 0.17, 0.20
HSL	12°, 25%, 74%
HSV	12°, 17%, 80%
XYZ	48.4479, 47.7602, 45.1932
YIQ	185.2750, 18.3390, 3.5470

Conversions

Conversions Part 2

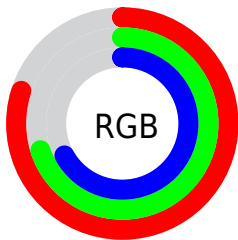
Format	Color
R _Y B	205, 180, 171
Decimal	13480619
CIE Lab	74.67, 8.57, 7.15
CIE LCh	75, 11.160, 39.810
Yxy	47.7602, 0.3426, 0.3378
Android (android.graphics.Color)	4291670699 (0xFFCDB2AB)
YUV	185.2750, -7.0376, 17.2988
Hunter-Lab	69.1088, 4.1951, 9.6038

Details

The XYZ color **48.4479, 47.7602, 45.1932** is a light color, and the websafe version is hex **CC9999**. A complement of this color would be **48.0077, 53.4526, 65.5451**, and the grayscale version is **46.2991, 48.7102, 53.0454**.

A 20% lighter version of the original color is **84.3903, 85.5966, 84.0255**, and **23.2411, 22.4832, 20.5675** is the 20% darker color. If you saturate the color by 10%, you get **43.5949, 40.9423, 34.6712**, and if you desaturate by 10%, it is **53.9909, 55.4722, 57.4415**.

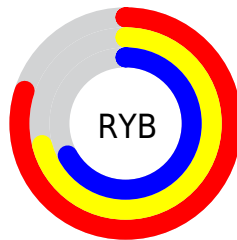
Distribution



Red (80%)

Green (70%)

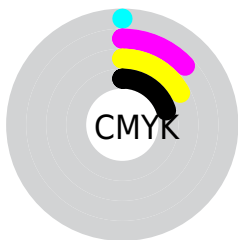
Blue (67%)



Red (80%)

Yellow (71%)

Blue (67%)

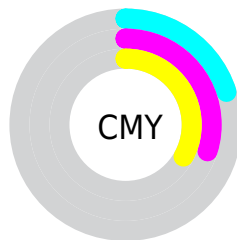


Cyan (0%)

Magenta (13%)

Yellow (17%)

Black (20%)



Cyan (20%)


Magenta (30%)


Yellow (33%)

Brightness & Saturation Gradients


These gradients show how the XYZ color 48.4479, 47.7602, 45.1932 changes by changing the brightness by 10 percent. The first figure shows a shift by +10% for each color and the second figure -10%.


Similar to the brightness gradients but the following saturation gradients show a change of the XYZ color 48.4479, 47.7602, 45.1932 by changing the saturation by 10% instead.


 48.4479, 47.7602,
45.1932

 48.4479, 47.7602,
45.1932


371.1179,
377.8408, 383.7384

 34.3944, 33.6370,
31.2656

 87.0766, 86.8473,
84.3318

 23.3611, 22.6149,
20.5410


112.3825,
112.5799, 110.3798

 14.9825, 14.3094,
12.6009


142.1700,
142.9512, 141.3050

 8.8934, 8.3362,
7.0269

176.8043,
178.3455, 177.5260

 4.7282, 4.3108,
3.4002

216.6510,
219.1473, 219.4613

 2.1218, 1.8489,
1.3024

262.0752,

 0.7010, 0.5174,

265.7408, 267.5295

0.0638

313.4424,
318.5105, 322.1490

■ 0.0000, 0.0000,
0.0000

■ 48.4479, 47.7602,
45.1932

■ 48.4479, 47.7602,
45.1932

■ 43.5949, 40.9423,
34.6712

■ 53.9909, 55.4722,
57.4415

■ 39.4008, 34.9798,
25.7946

■ 60.2457, 64.1026,
71.4860

■ 35.8375, 29.8405,
18.4808

■ 67.2382, 73.6826,
87.3962

■ 32.8738, 25.4877,
12.6384

■ 74.9914, 84.2402,
105.2373

■ 30.4754, 21.8820,
8.1668

■ 78.9870, 91.7192,
108.1483

■ 28.6043, 18.9802,
4.9523

■ 27.2178, 16.7349,
2.8632

■ 26.2637, 15.0912,
1.7297

■ 26.0131, 14.6515,
1.4570

Harmonies

Analogous

The Analogous color harmony consists of three colors that are next to each other on the color wheel.



49.3354, 47.7602, 50.1282



48.4479, 47.7602, 45.1932



46.7501, 47.7602, 42.2346

Triad

The Triadic color harmony groups three colors that are evenly spaced from another and form a triangle on the color wheel.



48.4479, 47.7602, 45.1932



41.8418, 47.7602, 48.2528



46.0604, 47.7602, 63.7672

Complementary

The Complementary color scheme is a pair of colors which are on the opposite of each other on the color wheel.



48.4479, 47.7602, 45.1932



48.0077, 53.4526, 65.5451

Split Complementary

Split-complementary colors differ from the complementary color scheme. The scheme consists of three colors, the original color and two neighbors of the complement color.



44.0657, 47.7602, 63.1716



48.4479, 47.7602, 45.1932



41.6695, 47.7602, 53.9234

Square

The Square scheme is like the rectangle color scheme, but the four colors are evenly spaced on the color wheel.



48.4479, 47.7602, 45.1932



42.9501, 47.7602, 43.9080



42.4724, 47.7602, 59.4641



47.9302, 47.7602, 61.0358

Rectangle

The Rectangle color scheme consists of four colors that form a rectangle on the color wheel.



48.4479, 47.7602, 45.1932



45.4075, 47.7602, 41.6418



42.4724, 47.7602, 59.4641



45.3817, 47.7602, 63.9538

Sweetspot

The Sweet Spot groups the original color and five complimentary colors.



48.4492, 47.7623, 45.1942



89.9196, 92.9159, 97.3967



49.9564, 46.1920, 59.8305



19.0974, 19.6814, 20.5140



0.0000, 0.0000, 0.0000



20.3446, 21.4041, 23.3091

Same Dimension

The Same Dimension uses a secret algorithm to generate beautiful new colors.



48.4492, 47.7623, 45.1942



76.3139, 73.9693, 67.3821



51.9983, 54.8605, 46.3772



11.3964, 11.5818, 11.7143



16.2497, 9.2323, 0.9256



0.8941, 0.5879, 0.0663

Inverse Universe

The Inverse Universe completely reimagines the original color for something new.



48.0077, 53.4526, 65.5451



75.4514, 85.0565, 107.0486



44.3792, 46.1954, 64.3356



11.3394, 12.3193, 14.3506



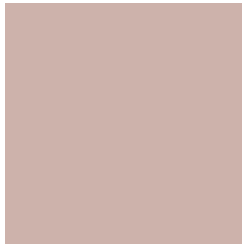
15.0579, 19.1398, 38.8570



0.8276, 1.0890, 2.0215

Previews

White Background



This preview shows how the XYZ color 48.4479, 47.7602, 45.1932 looks on a white background.

Color Contrast Check

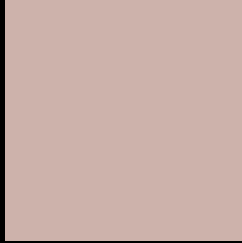
Large Text (above 18pt) WCAG AA × Fail

Any Text WCAG AA × Fail

Large Text (above 18pt) WCAG AAA × Fail

Any Text WCAG AAA × Fail

Black Background



This preview shows how the XYZ color 48.4479, 47.7602, 45.1932 looks on a black background.

Color Contrast Check

Large Text (above 18pt) WCAG AA ✓ Pass

Any Text WCAG AA ✓ Pass

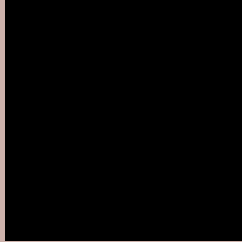
Large Text (above 18pt) WCAG AAA ✓ Pass

Any Text WCAG AAA ✓ Pass

If you want to check with other color combinations, try the [Color Contrast Checker](#).

XYZ 48.4479, 47.7602, 45.1932

Background



This preview shows how black text looks on a background with the XYZ color 48.4479, 47.7602, 45.1932.



This preview shows how white text looks on a background with the XYZ color 48.4479, 47.7602,

45.1932.

Color Blindness Simulation

Color vision deficiency is a very complex topic, and I could not describe the different causes any better than Wikipedia does, so if you want to learn more, you should check out their [article about color blindness](#).

Dichromacy



Original Color

48.4479, 47.7602, 45.1932

Protanopia

45.8087, 47.8701, 46.8699

Deuteranopia

48.5264, 47.5064, 45.1401



Tritanopia

50.2474, 47.5995, 54.6834

Trichromacy



Original Color

48.4479, 47.7602, 45.1932

Protanomaly

46.5724, 47.6670, 46.2812

Deuteranomaly

48.5264, 47.5064, 45.1401

Tritanomaly

49.4224, 47.5499, 50.8292

Monochromacy



Original Color

48.4479, 47.7602, 45.1932

Achromatopsia

46.1135, 48.5150, 52.8328

Achromatomaly

46.7044, 47.9577, 49.9752

CSS Examples

Text

The CSS property to change the color of the text to XYZ 48.4479, 47.7602, 45.1932 is called "color". The color property can be set on classes, ids or directly on the HTML element.

This example shows how text in the color `rgb(205, 178, 171)` looks like.

```
.text, #text, p{  
    color:rgb(205, 178, 171)  
}
```

If you want to add a text shadow in that color use the text-shadow property, you can generate a text shadow directly with our [CSS Text Shadow Generator](#).

Here you see how black text with a 4 pixel rgb(205, 178, 171) colored shadow looks like.

```
.shadow{ text-shadow: 4px 4px 2px rgb(205, 178, 171) }
```

Border

The CSS property to change the border of an element to XYZ 48.4479, 47.7602, 45.1932 is called "border". The border property can be set on classes, ids or directly on the HTML element.

This example shows the color as border, it can be applied via the CSS property "border" or "border-color".

```
.border, #border, table{ border:4px solid rgb(205, 178, 171) }
```


If only the border color should be changed use the property `border-color`.

```
.border{ border-color:rgb(205, 178, 171) }
```

If you want to add a box shadow in that color use:

Here you see how a box with a 4 pixel `rgb(205, 178, 171)` colored shadow looks like.

```
.boxshadow{ -moz-box-shadow:4px 4px 4px  
4px rgb(205, 178, 171); -webkit-box-  
shadow:4px 4px 4px 4px rgb(205, 178, 171);  
box-shadow:4px 4px 4px 4px rgb(205, 178,  
171) }
```

Background

The CSS property to change the background color of an element to XYZ 48.4479, 47.7602, 45.1932 is called "background". The background property can be set on classes, ids or directly on the HTML element.

```
.background, #background, body{  
background: rgb(205, 178, 171) }
```

If only the background color should be changed can be used:

```
.background{ background-color: rgb(205,  
178, 171) }
```

This example shows the color as background, it is applied via the CSS property "background".

To optimize and compress your CSS code, you can use our [online CSS compressor and optimizer](#) based on csstidy. If you want to create a linear or radial gradient as background or border, check our [CSS Gradient Generator](#).

Hey! You found this booklet interesting? Support Converting Colors with the new Membership Option!

The pro membership hides all ads, plus gives you double the colors in the color bucket, and more awesome pro features!

[Learn more, Memberships starting at \\$2.50/m!](#)

**Follow me
on Twitter!**

@ConvertingColor