

Converting Colors

XYZ(48.3618, 47.3768, 47.1531)

Have a look what the booklet for
XYZ(48.3618, 47.3768, 47.1531)
contains.

XYZ(48.3618, 47.3768, 47.1531)	3
<i>Conversions</i>	4
<i>Details</i>	6
<i>Harmonies</i>	12
<i>Previews</i>	24
<i>Color Blindness Simulation</i>	28
<i>CSS Examples</i>	31

Color

**XYZ(48.3618, 47.3768,
47.1531)**

Conversions

Conversions Part 1

Format	Color
Hex	CCB1AF
RGB	204, 177, 175
RGB Percent	80%, 69%, 69%
CMY	0.2000, 0.3059, 0.3137
CMYK	0.00, 0.13, 0.14, 0.20
HSL	4°, 22%, 74%
HSV	4°, 14%, 80%
XYZ	48.3618, 47.3768, 47.1531
YIQ	184.8450, 16.7340, 5.1020

Conversions

Conversions Part 2

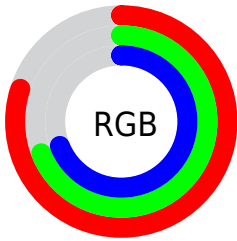
Format	Color
R_{YB}	204, 177, 175
Decimal	13414831
CIE _{Lab}	74.43, 9.39, 4.60
CIE _{LCh}	74, 10.452, 26.110
Yxy	47.3768, 0.3385, 0.3316
Android (android.graphics.Color)	4291604911 (0xFFCCB1AF)
YUV	184.8450, -4.8536, 16.7989
Hunter-Lab	68.8308, 4.9635, 7.5645

Details

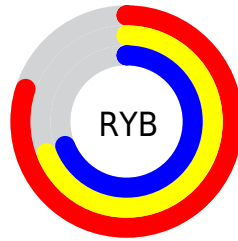
The XYZ color **48.3618, 47.3768, 47.1531** is a light color, and the websafe version is hex **CC9999**. A complement of this color would be **49.6984, 55.7133, 65.2614**, and the grayscale version is **46.0486, 48.4467, 52.7585**.

A 20% lighter version of the original color is **84.6618, 85.2510, 86.8558**, and **23.3605, 22.3294, 21.8177** is the 20% darker color. If you saturate the color by 10%, you get **43.0143, 39.6493, 36.2210**, and if you desaturate by 10%, it is **54.5367, 56.2736, 59.8554**.

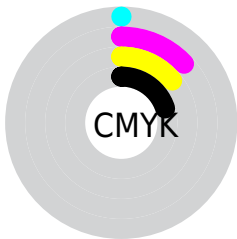
Distribution



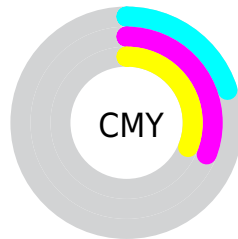
- Red (80%)
- Green (69%)
- Blue (69%)



- Red (80%)
- Yellow (69%)
- Blue (69%)



- Cyan (0%)
- Magenta (13%)
- Yellow (14%)
- Black (20%)





- Cyan (20%)
- Magenta (31%)
- Yellow (31%)

Brightness & Saturation Gradients


These gradients show how the XYZ color 48.3618, 47.3768, 47.1531 changes by changing the brightness by 10 percent. The first figure shows a shift by +10% for each color and the second figure -10%.


Similar to the brightness gradients but the following saturation gradients show a change of the XYZ color 48.3618, 47.3768, 47.1531 by changing the saturation by 10% instead.


 48.3618, 47.3768,
47.1531

 48.3618, 47.3768,
47.1531


370.7832,
376.3166, 391.8368

 34.3259, 33.3336,
32.8015

 86.9493, 86.2758,
87.2945

 23.3082, 22.3821,
21.7045


112.2316,
111.9004, 113.9213

 14.9432, 14.1380,
13.4437


141.9935,
142.1543, 145.4770

 8.8656, 8.2167,
7.6005

176.6002,
177.4218, 182.3801

 4.7100, 4.2339,
3.7563

216.4172,
218.0874, 225.0490

 2.1111, 1.8053,
1.4926

261.8098,

 0.6953, 0.4904,

264.5355, 273.9024

0.2124

313.1433,
317.1504, 329.3588

■ 0.0000, 0.0000,
0.0000

■ 48.3618, 47.3768,
47.1531

■ 48.3618, 47.3768,
47.1531

■ 43.0143, 39.6493,
36.2210

■ 54.5367, 56.2736,
59.8554

■ 38.4552, 33.0365,
26.9777

■ 61.5678, 66.3787,
74.3986

■ 34.6485, 27.4889,
19.3400

■ 69.4877, 77.7374,
90.8528

■ 31.5535, 22.9507,
13.2162

■ 78.0668, 90.2870,
107.9203

■ 29.1259, 19.3611,
8.5054

■ 78.7120, 91.5774,
108.1354

■ 27.3164, 16.6528,
5.0948

■ 26.0688, 14.7496,
2.8538

■ 25.3165, 13.5623,
1.6249

■ 25.0603, 13.1541,
1.2182

Harmonies

Analogous

The Analogous color harmony consists of three colors that are next to each other on the color wheel.



48.7417, 47.3768, 52.2923



48.3618, 47.3768, 47.1531



47.0804, 47.3768, 43.4441

Triad

The Triadic color harmony groups three colors that are evenly spaced from another and form a triangle on the color wheel.



48.3618, 47.3768, 47.1531



42.0898, 47.3768, 46.0143



44.7849, 47.3768, 62.6430

Complementary

The Complementary color scheme is a pair of colors which are on the opposite of each other on the color wheel.



48.3618, 47.3768, 47.1531



49.6984, 55.7133, 65.2614

Split Complementary

Split-complementary colors differ from the complementary color scheme. The scheme consists of three colors, the original color and two neighbors of the complement color.



43.0405, 47.3768, 60.6849



48.3618, 47.3768, 47.1531



41.5121, 47.3768, 50.8847

Square

The Square scheme is like the rectangle color scheme, but the four colors are evenly spaced on the color wheel.



48.3618, 47.3768, 47.1531



43.4548, 47.3768, 42.8195



41.8553, 47.3768, 56.2868



46.6433, 47.3768, 61.4725

Rectangle

The Rectangle color scheme consists of four colors that form a rectangle on the color wheel.



48.3618, 47.3768, 47.1531



45.9054, 47.3768, 42.1558



41.8553, 47.3768, 56.2868



44.1663, 47.3768, 62.3254

Sweetspot

The Sweet Spot groups the original color and five complimentary colors.



48.3631, 47.3789, 47.1541



90.4962, 93.4510, 99.4944



50.9008, 47.7653, 62.4557



19.1922, 19.7467, 20.9293



0.0000, 0.0000, 0.0000



20.3446, 21.4041, 23.3091

Same Dimension

The Same Dimension uses a secret algorithm to generate beautiful new colors.



48.3631, 47.3789, 47.1541



77.2898, 74.4163, 72.3463



51.3656, 53.3839, 48.1549



11.2735, 11.3360, 11.6733



15.7985, 8.3299, 0.7752



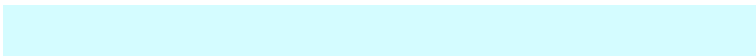
0.8373, 0.4742, 0.0474

Inverse Universe

The Inverse Universe completely reimagines the original color for something new.



49.6984, 55.7133, 65.2614



79.9124, 90.7887, 107.9199



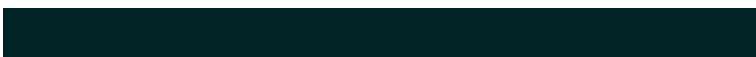
46.4696, 49.2557, 64.1852



11.4743, 12.5891, 14.3956



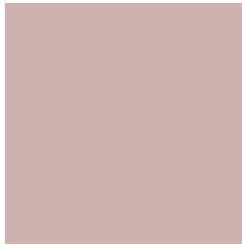
18.4647, 25.9533, 39.9926



0.9729, 1.3797, 2.0700

Previews

White Background



This preview shows how the XYZ color 48.3618, 47.3768, 47.1531 looks on a white background.

Color Contrast Check

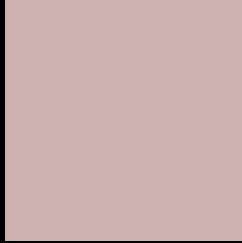
Large Text (above 18pt) WCAG AA × Fail

Any Text WCAG AA × Fail

Large Text (above 18pt) WCAG AAA × Fail

Any Text WCAG AAA × Fail

Black Background



This preview shows how the XYZ color 48.3618, 47.3768, 47.1531 looks on a black background.

Color Contrast Check

Large Text (above 18pt) WCAG AA ✓ Pass

Any Text WCAG AA ✓ Pass

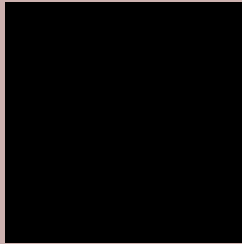
Large Text (above 18pt) WCAG AAA ✓ Pass

Any Text WCAG AAA ✓ Pass

If you want to check with other color combinations, try the [Color Contrast Checker](#).

XYZ 48.3618, 47.3768, 47.1531

Background



This preview shows how black text looks on a background with the XYZ color 48.3618, 47.3768, 47.1531.



This preview shows how white text looks on a background with the XYZ color 48.3618, 47.3768,

Color Blindness Simulation

Color vision deficiency is a very complex topic, and I could not describe the different causes any better than Wikipedia does, so if you want to learn more, you should check out their [article about color blindness](#).

Dichromacy



Original Color

48.3618, 47.3768, 47.1531

Protanopia

45.5029, 47.3616, 48.8629

Deuteranopia

48.3618, 47.3768, 47.1531



Tritanopia

49.9689, 47.4559, 54.6704

Trichromacy



Original Color

48.3618, 47.3768, 47.1531

Protanomaly

46.5052, 47.2862, 48.2710

Deuteranomaly

48.3618, 47.3768, 47.1531

Tritanomaly

49.3539, 47.4905, 51.9128

Monochromacy



Original Color

48.3618, 47.3768, 47.1531

Achromatopsia

46.1135, 48.5150, 52.8328

Achromatomaly

46.8067, 47.9986, 50.5137

CSS Examples

Text

The CSS property to change the color of the text to XYZ 48.3618, 47.3768, 47.1531 is called "color". The color property can be set on classes, ids or directly on the HTML element.

This example shows how text in the color `rgb(204, 177, 175)` looks like.

```
.text, #text, p{  
    color:rgb(204, 177, 175)  
}
```

If you want to add a text shadow in that color use the text-shadow property, you can generate a text shadow directly with our [CSS Text Shadow Generator](#).

Here you see how black text with a 4 pixel rgb(204, 177, 175) colored shadow looks like.

```
.shadow{ text-shadow: 4px 4px 2px rgb(204, 177, 175) }
```

Border

The CSS property to change the border of an element to XYZ 48.3618, 47.3768, 47.1531 is called "border". The border property can be set on classes, ids or directly on the HTML element.

This example shows the color as border, it can be applied via the CSS property "border" or "border-color".

```
.border, #border, table{ border:4px solid rgb(204, 177, 175) }
```


If only the border color should be changed use the property border-color.

```
.border{ border-color:rgb(204, 177, 175) }
```

If you want to add a box shadow in that color use:

Here you see how a box with a 4 pixel rgb(204, 177, 175) colored shadow looks like.

```
.boxshadow{ -moz-box-shadow:4px 4px 4px  
4px rgb(204, 177, 175); -webkit-box-  
shadow:4px 4px 4px 4px rgb(204, 177, 175);  
box-shadow:4px 4px 4px 4px rgb(204, 177,  
175) }
```

Background

The CSS property to change the background color of an element to XYZ 48.3618, 47.3768, 47.1531 is called "background". The background property can be set on classes, ids or directly on the HTML element.

```
.background, #background, body{  
background: rgb(204, 177, 175) }
```

If only the background color should be changed can be used:

```
.background{ background-color: rgb(204,  
177, 175) }
```

This example shows the color as background, it is applied via the CSS property "background".

To optimize and compress your CSS code, you can use our [online CSS compressor and optimizer](#) based on csstidy. If you want to create a linear or radial gradient as background or border, check our [CSS Gradient Generator](#).

Hey! You found this booklet interesting? Support Converting Colors with the new Membership Option!

The pro membership hides all ads, plus gives you double the colors in the color bucket, and more awesome pro features!

[Learn more, Memberships starting at \\$2.50/m!](#)

**Follow me
on Twitter!**

@ConvertingColor