

Converting Colors

XYZ(48.4294, 48.9137, 49.4127)

Have a look what the booklet for
XYZ(48.4294, 48.9137, 49.4127)
contains.

XYZ(48.4178, 48.8527, 49.5254)	3
<i>Conversions</i>	4
<i>Details</i>	6
<i>Harmonies</i>	12
<i>Previews</i>	24
<i>Color Blindness Simulation</i>	28
<i>CSS Examples</i>	31

Color

**XYZ(48.4178, 48.8527,
49.5254)**

Conversions

Conversions Part 1

Format	Color
Hex	C7B6B3
RGB	199, 182, 179
RGB Percent	78%, 71%, 70%
CMY	0.2196, 0.2863, 0.2980
CMYK	0.00, 0.09, 0.10, 0.22
HSL	9°, 15%, 74%
HSV	9°, 10%, 78%
XYZ	48.4178, 48.8527, 49.5254
YIQ	186.7410, 11.0950, 2.6710

Conversions

Conversions Part 2

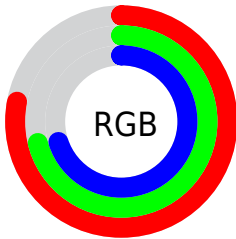
Format	Color
RYB	199, 183, 179
Decimal	13088435
CIELab	75.36, 5.53, 3.71
CIElCh	75, 6.659, 33.816
Yxy	48.8527, 0.3298, 0.3328
Android (android.graphics.Color)	4291278515 (0xFFC7B6B3)
YUV	186.7410, -3.8163, 10.7511
Hunter-Lab	69.8947, 1.3356, 6.9151

Details

The XYZ color **48.4178, 48.8527, 49.5254** is a light color, and the websafe version is hex **CCCCCC**. A complement of this color would be **48.6389, 53.1860, 61.7357**, and the grayscale version is **47.1057, 49.5589, 53.9696**.

A 20% lighter version of the original color is **86.8099, 88.4072, 91.0862**, and **23.2932, 23.2266, 22.9942** is the 20% darker color. If you saturate the color by 10%, you get **43.2922, 41.5930, 38.5934**, and if you desaturate by 10%, it is **54.2549, 57.0695, 62.1287**.

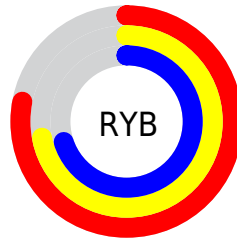
Distribution



Red (78%)

Green (71%)

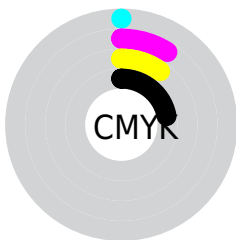
Blue (70%)



Red (78%)

Yellow (72%)

Blue (70%)

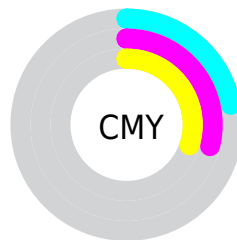


Cyan (0%)

Magenta (9%)

Yellow (10%)

Black (22%)



Cyan (22%)

Magenta (29%)


Yellow (30%)

Brightness & Saturation Gradients

These gradients show how the XYZ color 48.4178, 48.8527, 49.5254 changes by changing the brightness by 10 percent. The first figure shows a shift by +10% for each color and the second figure -10%.


Similar to the brightness gradients but the following saturation gradients show a change of the XYZ color 48.4178, 48.8527, 49.5254 by changing the saturation by 10% instead.


 48.4178, 48.8527,
49.5254

 48.4178, 48.8527,
49.5254


371.0009,
382.1621, 401.4888

 34.3705, 34.5026,
34.6679

 87.0321, 88.4726,
90.8603

 23.3426, 23.2800,
23.1257


112.3298,
114.5113, 118.1749

 14.9688, 14.8004,
14.4802


142.1083,
145.2150, 150.4788

 8.8836, 8.6794,
8.3128

176.7330,
180.9681, 188.1907

 4.7219, 4.5327,
4.2051

216.5693,
222.1549, 231.7291

 2.1181, 1.9758,
1.7385

261.9824,

 0.6990, 0.5933,

269.1600, 281.5126

0.3869

313.3378,
322.3676, 337.9597

■ 0.0000, 0.0000,
0.0000

■ 48.4178, 48.8527,
49.5254

■ 48.4178, 48.8527,
49.5254

■ 43.2922, 41.5930,
38.5934

■ 54.2549, 57.0695,
62.1287

■ 38.8468, 35.2492,
29.2595

■ 60.8252, 66.2697,
76.4663

■ 35.0540, 29.7868,
21.4496

■ 68.1544, 76.4867,
92.6016

■ 31.8827, 25.1667,
15.0824

■ 75.6804, 87.5163,
107.5113

■ 29.2992, 21.3465,
10.0691

■ 77.3634, 90.8822,
108.0723

■ 27.2666, 18.2805,
6.3112

■ 25.7437, 15.9181,
3.6966

■ 24.6830, 14.2023,
2.0929

■ 24.0148, 13.0651,
1.2561

Harmonies

Analogous

The Analogous color harmony consists of three colors that are next to each other on the color wheel.



48.8233, 48.8527, 52.7446



48.4178, 48.8527, 49.5254



47.4803, 48.8527, 47.3650

Triad

The Triadic color harmony groups three colors that are evenly spaced from another and form a triangle on the color wheel.



48.4178, 48.8527, 49.5254



44.3510, 48.8527, 50.2706



46.5900, 48.8527, 60.2117

Complementary

The Complementary color scheme is a pair of colors which are on the opposite of each other on the color wheel.



48.4178, 48.8527, 49.5254



48.6389, 53.1860, 61.7357

Split Complementary

Split-complementary colors differ from the complementary color scheme. The scheme consists of three colors, the original color and two neighbors of the complement color.



45.4013, 48.8527, 59.4790



48.4178, 48.8527, 49.5254



44.1220, 48.8527, 53.6425

Square

The Square scheme is like the rectangle color scheme, but the four colors are evenly spaced on the color wheel.



48.4178, 48.8527, 49.5254



45.1344, 48.8527, 47.7817



44.5032, 48.8527, 57.0358



47.7564, 48.8527, 58.9966

Rectangle

The Rectangle color scheme consists of four colors that form a rectangle on the color wheel.



48.4178, 48.8527, 49.5254



46.6873, 48.8527, 46.7631



44.5032, 48.8527, 57.0358



46.1797, 48.8527, 60.1853

Sweetspot

The Sweet Spot groups the original color and five complimentary colors.



48.4192, 48.8549, 49.5264



91.8036, 95.4390, 101.8621



49.6376, 48.3685, 58.9449



19.4683, 20.1727, 21.4102



0.0000, 0.0000, 0.0000



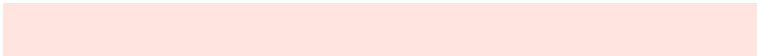
20.3446, 21.4041, 23.3091

Same Dimension

The Same Dimension uses a secret algorithm to generate beautiful new colors.



48.4192, 48.8549, 49.5264



82.7670, 82.6998, 82.4061



50.5400, 53.0966, 50.2334



10.7603, 10.8898, 11.0976



15.4825, 8.4822, 0.8212



0.7753, 0.4861, 0.0530

Inverse Universe

The Inverse Universe completely reimagines the original color for something new.



48.6389, 53.1860, 61.7357



83.2260, 91.7540, 107.9316



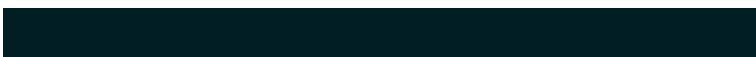
46.4587, 48.8257, 61.0090



10.8058, 11.7856, 13.6228



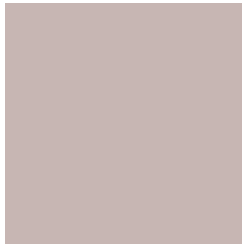
15.8165, 21.0269, 37.9693



0.7868, 1.0713, 1.8105

Previews

White Background



This preview shows how the XYZ color 48.4178, 48.8527, 49.5254 looks on a white background.

Color Contrast Check

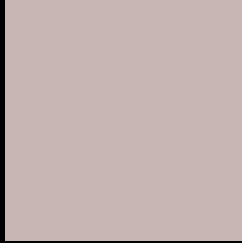
Large Text (above 18pt) WCAG AA × Fail

Any Text WCAG AA × Fail

Large Text (above 18pt) WCAG AAA × Fail

Any Text WCAG AAA × Fail

Black Background



This preview shows how the XYZ color 48.4178, 48.8527, 49.5254 looks on a black background.

Color Contrast Check

Large Text (above 18pt) WCAG AA ✓ Pass

Any Text WCAG AA ✓ Pass

Large Text (above 18pt) WCAG AAA ✓ Pass

Any Text WCAG AAA ✓ Pass

If you want to check with other color combinations, try the [Color Contrast Checker](#).

XYZ 48.4178, 48.8527, 49.5254

Background



This preview shows how black text looks on a background with the XYZ color 48.4178, 48.8527, 49.5254.



This preview shows how white text looks on a background with the XYZ color 48.4178, 48.8527,

Color Blindness Simulation

Color vision deficiency is a very complex topic, and I could not describe the different causes any better than Wikipedia does, so if you want to learn more, you should check out their [article about color blindness](#).

Dichromacy



Original Color

48.4178, 48.8527, 49.5254

Protanopia

46.9247, 48.9813, 50.6972

Deuteranopia

49.7104, 48.6167, 49.4118



Tritanopia

50.1463, 48.9551, 57.8452

Trichromacy



Original Color

48.4178, 48.8527, 49.5254

Protanomaly

47.3710, 48.9137, 50.1246

Deuteranomaly

49.0865, 48.5937, 49.4402

Tritanomaly

49.5286, 49.0012, 54.9919

Monochromacy



Original Color

48.4178, 48.8527, 49.5254

Achromatopsia

47.2335, 49.6933, 54.1160

Achromatomaly

47.4865, 49.2350, 52.3479

CSS Examples

Text

The CSS property to change the color of the text to XYZ 48.4178, 48.8527, 49.5254 is called "color". The color property can be set on classes, ids or directly on the HTML element.

This example shows how text in the color rgb(199, 182, 179) looks like.

```
.text, #text, p{  
    color:rgb(199, 182, 179)  
}
```

If you want to add a text shadow in that color use the text-shadow property, you can generate a text shadow directly with our [CSS Text Shadow Generator](#).

Here you see how black text with a 4 pixel rgb(199, 182, 179) colored shadow looks like.

```
.shadow{ text-shadow: 4px 4px 2px rgb(199, 182, 179) }
```

Border

The CSS property to change the border of an element to XYZ 48.4178, 48.8527, 49.5254 is called "border". The border property can be set on classes, ids or directly on the HTML element.

This example shows the color as border, it can be applied via the CSS property "border" or "border-color".

```
.border, #border, table{ border:4px solid rgb(199, 182, 179) }
```


If only the border color should be changed use the property `border-color`.

```
.border{ border-color:rgb(199, 182, 179) }
```

If you want to add a box shadow in that color use:

Here you see how a box with a 4 pixel `rgb(199, 182, 179)` colored shadow looks like.

```
.boxshadow{ -moz-box-shadow:4px 4px 4px  
4px rgb(199, 182, 179); -webkit-box-  
shadow:4px 4px 4px 4px rgb(199, 182, 179);  
box-shadow:4px 4px 4px 4px rgb(199, 182,  
179) }
```

Background

The CSS property to change the background color of an element to XYZ 48.4178, 48.8527, 49.5254 is called "background". The background property can be set on classes, ids or directly on the HTML element.

```
.background, #background, body{  
background: rgb(199, 182, 179) }
```

If only the background color should be changed can be used:

```
.background{ background-color: rgb(199,  
182, 179) }
```

This example shows the color as background, it is applied via the CSS property "background".

To optimize and compress your CSS code, you can use our [online CSS compressor and optimizer](#) based on csstidy. If you want to create a linear or radial gradient as background or border, check our [CSS Gradient Generator](#).

Hey! You found this booklet interesting? Support Converting Colors with the new Membership Option!

The pro membership hides all ads, plus gives you double the colors in the color bucket, and more awesome pro features!

[Learn more, Memberships starting at \\$2.50/m!](#)

**Follow me
on Twitter!**

@ConvertingColor