

Converting Colors

XYZ(48.4658, 48.9556, 50.0337)

Have a look what the booklet for
XYZ(48.4658, 48.9556, 50.0337)
contains.

XYZ(48.5194, 48.8933, 50.0601)	3
<i>Conversions</i>	4
<i>Details</i>	6
<i>Harmonies</i>	12
<i>Previews</i>	24
<i>Color Blindness Simulation</i>	28
<i>CSS Examples</i>	31

Color

**XYZ(48.5194, 48.8933,
50.0601)**

Conversions

Conversions Part 1

Format	Color
Hex	C7B6B4
RGB	199, 182, 180
RGB Percent	78%, 71%, 71%
CMY	0.2196, 0.2863, 0.2941
CMYK	0.00, 0.09, 0.10, 0.22
HSL	6°, 15%, 74%
HSV	6°, 10%, 78%
XYZ	48.5194, 48.8933, 50.0601
YIQ	186.8550, 10.7740, 2.9820

Conversions

Conversions Part 2

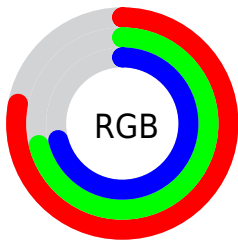
Format	Color
RYB	199, 182, 180
Decimal	13088436
CIELab	75.38, 5.70, 3.20
CIELCh	75, 6.538, 29.284
Yxy	48.8933, 0.3290, 0.3315
Android (android.graphics.Color)	4291278516 (0xFFC7B6B4)
YUV	186.8550, -3.3795, 10.6512
Hunter-Lab	69.9237, 1.4928, 6.4995

Details

The XYZ color **48.5194, 48.8933, 50.0601** is a light color, and the websafe version is hex **CCCCCC**. A complement of this color would be **49.0973, 53.7585, 61.8222**, and the grayscale version is **47.1677, 49.6241, 54.0406**.

A 20% lighter version of the original color is **86.9549, 88.4652, 91.8494**, and **23.3581, 23.2526, 23.3358** is the 20% darker color. If you saturate the color by 10%, you get **43.2193, 41.3075, 38.9994**, and if you desaturate by 10%, it is **54.5768, 57.5268, 62.8104**.

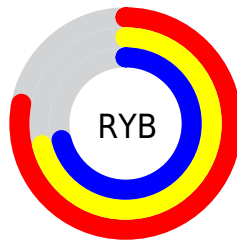
Distribution



Red (78%)

Green (71%)

Blue (71%)



Red (78%)

Yellow (71%)

Blue (71%)

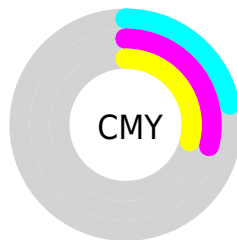


Cyan (0%)

Magenta (9%)

Yellow (10%)

Black (22%)



Cyan (22%)

Magenta (29%)

Yellow (29%)

Brightness & Saturation Gradients

These gradients show how the XYZ color 48.5194, 48.8933, 50.0601 changes by changing the brightness by 10 percent. The first figure shows a shift by +10% for each color and the second figure -10%.

Similar to the brightness gradients but the following saturation gradients show a change of the XYZ color 48.5194, 48.8933, 50.0601 by changing the saturation by 10% instead.

■ 48.5194, 48.8933,
50.0601

■ 48.5194, 48.8933,
50.0601

371.3956,
382.3221, 403.6427

■ 34.4514, 34.5348,
35.0896

■ 87.1823, 88.5330,
91.6611

■ 23.4051, 23.3048,
23.4478

112.5078,
114.5830, 119.1288

■ 15.0152, 14.8187,
14.7161

142.3165,
145.2989, 151.5993

■ 8.9165, 8.6923,
8.4760

176.9738,
181.0653, 189.4911

■ 4.7434, 4.5410,
4.3089

216.8450,
222.2663, 233.2228

■ 2.1307, 1.9806,
1.7963

262.2955,

■ 0.7058, 0.5961,

269.2866, 283.2130

0.4255

313.6906,
322.5104, 339.8801

■ 0.0000, 0.0000,
0.0000

■ 48.5194, 48.8933,
50.0601

■ 48.5194, 48.8933,
50.0601

■ 43.2193, 41.3075,
38.9994

■ 54.5768, 57.5268,
62.8104

■ 38.6428, 34.7234,
29.5543

■ 61.4154, 67.2389,
77.3139

■ 34.7596, 29.1009,
21.6502

■ 69.0632, 78.0675,
93.6344

■ 31.5356, 24.3950,
15.2051

■ 76.7956, 89.7465,
107.8830

■ 28.9341, 20.5569,
10.1297

■ 77.3635, 90.8823,
108.0723

■ 26.9144, 17.5335,
6.3244

■ 25.4311, 15.2655,
3.6767

■ 24.4321, 13.6858,
2.0537

■ 23.8413, 12.7100,
1.2226

Harmonies

Analogous

The Analogous color harmony consists of three colors that are next to each other on the color wheel.



48.8242, 48.8933, 53.3194



48.5194, 48.8933, 50.0601



47.6637, 48.8933, 47.7396

Triad

The Triadic color harmony groups three colors that are evenly spaced from another and form a triangle on the color wheel.



48.5194, 48.8933, 50.0601



44.5104, 48.8933, 49.9225



46.4427, 48.8933, 60.1423

Complementary

The Complementary color scheme is a pair of colors which are on the opposite of each other on the color wheel.



48.5194, 48.8933, 50.0601



49.0973, 53.7585, 61.8222

Split Complementary

Split-complementary colors differ from the complementary color scheme. The scheme consists of three colors, the original color and two neighbors of the complement color.



45.2996, 48.8933, 59.1399



48.5194, 48.8933, 50.0601



44.1958, 48.8933, 53.1537

Square

The Square scheme is like the rectangle color scheme, but the four colors are evenly spaced on the color wheel.



48.5194, 48.8933, 50.0601



45.3489, 48.8933, 47.6626



44.4823, 48.8933, 56.5445



47.6128, 48.8933, 59.2289

Rectangle

The Rectangle color scheme consists of four colors that form a rectangle on the color wheel.



48.5194, 48.8933, 50.0601



46.9033, 48.8933, 46.9864



44.4823, 48.8933, 56.5445



46.0426, 48.8933, 60.0176

Sweetspot

The Sweet Spot groups the original color and five complimentary colors.



48.5208, 48.8955, 50.0611



91.6982, 95.2282, 101.8270



49.9647, 48.8212, 59.6741



19.4400, 20.1161, 21.4008



0.0000, 0.0000, 0.0000



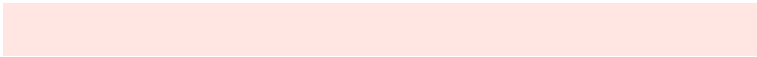
20.3446, 21.4041, 23.3091

Same Dimension

The Same Dimension uses a secret algorithm to generate beautiful new colors.



48.5208, 48.8955, 50.0611



83.3694, 83.3456, 84.3301



50.5103, 52.8744, 50.7243



10.7224, 10.8139, 11.0849



15.3489, 8.2151, 0.7767



0.7580, 0.4514, 0.0472

Inverse Universe

The Inverse Universe completely reimagines the original color for something new.



49.0973, 53.7585, 61.8222



84.5364, 93.1901, 108.1397



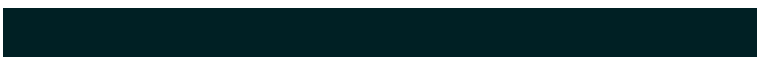
47.0298, 49.6233, 61.1331



10.8475, 11.8691, 13.6367



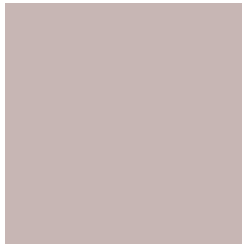
16.9063, 23.2065, 38.3326



0.8287, 1.1551, 1.8244

Previews

White Background



This preview shows how the XYZ color 48.5194, 48.8933, 50.0601 looks on a white background.

Color Contrast Check

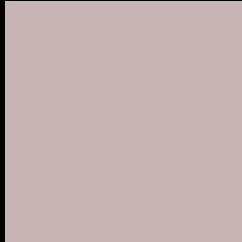
Large Text (above 18pt) WCAG AA × Fail

Any Text WCAG AA × Fail

Large Text (above 18pt) WCAG AAA × Fail

Any Text WCAG AAA × Fail

Black Background



This preview shows how the XYZ color 48.5194, 48.8933, 50.0601 looks on a black background.

Color Contrast Check

Large Text (above 18pt) WCAG AA ✓ Pass

Any Text WCAG AA ✓ Pass

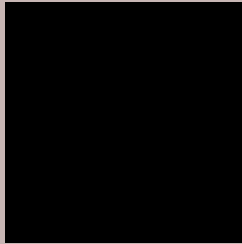
Large Text (above 18pt) WCAG AAA ✓ Pass

Any Text WCAG AAA ✓ Pass

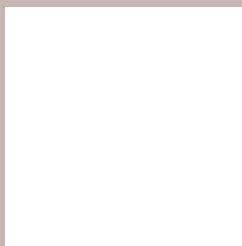
If you want to check with other color combinations, try the [Color Contrast Checker](#).

XYZ 48.5194, 48.8933, 50.0601

Background



This preview shows how black text looks on a background with the XYZ color 48.5194, 48.8933, 50.0601.



This preview shows how white text looks on a background with the XYZ color 48.5194, 48.8933,

Color Blindness Simulation

Color vision deficiency is a very complex topic, and I could not describe the different causes any better than Wikipedia does, so if you want to learn more, you should check out their [article about color blindness](#).

Dichromacy



Original Color

48.5194, 48.8933, 50.0601

Protanopia

47.0277, 49.0225, 51.2396

Deuteranopia

50.0131, 49.0596, 50.0135



Tritanopia

50.1463, 48.9551, 57.8452

Trichromacy



Original Color

48.5194, 48.8933, 50.0601

Protanomaly

47.4733, 48.9546, 50.6631

Deuteranomaly

49.3907, 49.0395, 50.0424

Tritanomaly

49.5286, 49.0012, 54.9919

Monochromacy



Original Color

48.5194, 48.8933, 50.0601

Achromatopsia

47.2335, 49.6933, 54.1160

Achromatomaly

47.4865, 49.2350, 52.3479

CSS Examples

Text

The CSS property to change the color of the text to XYZ 48.5194, 48.8933, 50.0601 is called "color". The color property can be set on classes, ids or directly on the HTML element.

This example shows how text in the color `rgb(199, 182, 180)` looks like.

```
.text, #text, p{  
    color:rgb(199, 182, 180)  
}
```

If you want to add a text shadow in that color use the text-shadow property, you can generate a text shadow directly with our [CSS Text Shadow Generator](#).

Here you see how black text with a 4 pixel rgb(199, 182, 180) colored shadow looks like.

```
.shadow{ text-shadow: 4px 4px 2px rgb(199, 182, 180) }
```

Border

The CSS property to change the border of an element to XYZ 48.5194, 48.8933, 50.0601 is called "border". The border property can be set on classes, ids or directly on the HTML element.

This example shows the color as border, it can be applied via the CSS property "border" or "border-color".

```
.border, #border, table{ border:4px solid rgb(199, 182, 180) }
```


If only the border color should be changed use the property `border-color`.

```
.border{ border-color:rgb(199, 182, 180) }
```

If you want to add a box shadow in that color use:

Here you see how a box with a 4 pixel `rgb(199, 182, 180)` colored shadow looks like.

```
.boxshadow{ -moz-box-shadow:4px 4px 4px  
4px rgb(199, 182, 180); -webkit-box-  
shadow:4px 4px 4px 4px rgb(199, 182, 180);  
box-shadow:4px 4px 4px 4px rgb(199, 182,  
180) }
```

Background

The CSS property to change the background color of an element to XYZ 48.5194, 48.8933, 50.0601 is called "background". The background property can be set on classes, ids or directly on the HTML element.

```
.background, #background, body{  
background: rgb(199, 182, 180) }
```

If only the background color should be changed can be used:

```
.background{ background-color: rgb(199,  
182, 180) }
```

This example shows the color as background, it is applied via the CSS property "background".

To optimize and compress your CSS code, you can use our [online CSS compressor and optimizer](#) based on csstidy. If you want to create a linear or radial gradient as background or border, check our [CSS Gradient Generator](#).

Hey! You found this booklet interesting? Support Converting Colors with the new Membership Option!

The pro membership hides all ads, plus gives you double the colors in the color bucket, and more awesome pro features!

[Learn more, Memberships starting at \\$2.50/m!](#)

**Follow me
on Twitter!**

@ConvertingColor