

Converting Colors

XYZ(48.5074, 46.9684, 42.5856)

Have a look what the booklet for
XYZ(48.5074, 46.9684, 42.5856)
contains.

XYZ(48.5074, 46.9684, 42.5856)	3
<i>Conversions</i>	4
<i>Details</i>	6
<i>Harmonies</i>	12
<i>Previews</i>	24
<i>Color Blindness Simulation</i>	28
<i>CSS Examples</i>	31

Color

**XYZ(48.5074, 46.9684,
42.5856)**

Conversions

Conversions Part 1

Format	Color
Hex	D1AFA6
RGB	209, 175, 166
RGB Percent	82%, 69%, 65%
CMY	0.1804, 0.3137, 0.3490
CMYK	0.00, 0.16, 0.21, 0.18
HSL	13°, 32%, 74%
HSV	13°, 21%, 82%
XYZ	48.5074, 46.9684, 42.5856
YIQ	184.1400, 23.1530, 4.4090

Conversions

Conversions Part 2

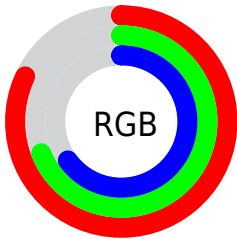
Format	Color
R_{YB}	209, 177, 166
Decimal	13741990
CIE _{Lab}	74.17, 10.91, 9.20
CIE _{LCh}	74, 14.272, 40.153
Yxy	46.9684, 0.3513, 0.3402
Android (android.graphics.Color)	4291932070 (0xFFD1AFA6)
YUV	184.1400, -8.9430, 21.8022
Hunter-Lab	68.5335, 6.4071, 11.1316

Details

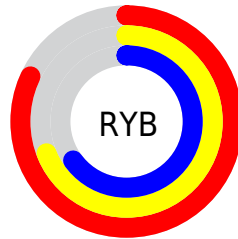
The XYZ color **48.5074, 46.9684, 42.5856** is a light color, and the websafe version is hex **CC9999**. A complement of this color would be **47.8884, 54.0177, 68.2244**, and the grayscale version is **45.6773, 48.0560, 52.3330**.

A 20% lighter version of the original color is **82.8671, 83.6323, 80.1817**, and **23.4466, 22.2508, 18.9787** is the 20% darker color. If you saturate the color by 10%, you get **43.7224, 40.2211, 32.2881**, and if you desaturate by 10%, it is **54.0001, 54.6317, 54.6573**.

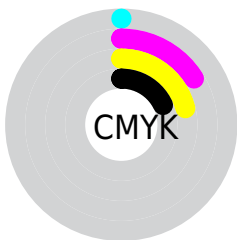
Distribution



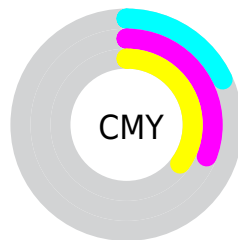
- Red (82%)
- Green (69%)
- Blue (65%)



- Red (82%)
- Yellow (69%)
- Blue (65%)



- Cyan (0%)
- Magenta (16%)
- Yellow (21%)
- Black (18%)




- Cyan (18%)
- Magenta (31%)
- Yellow (35%)

Brightness & Saturation Gradients


These gradients show how the XYZ color 48.5074, 46.9684, 42.5856 changes by changing the brightness by 10 percent. The first figure shows a shift by +10% for each color and the second figure -10%.

Similar to the brightness gradients but the following saturation gradients show a change of the XYZ color 48.5074, 46.9684, 42.5856 by changing the saturation by 10% instead.

 48.5074, 46.9684,
42.5856


 48.5074, 46.9684,
42.5856


371.3490,
374.6884, 372.7758

 34.4418, 33.0107,
29.2311

 87.1645, 85.6665,
80.3648

 23.3977, 22.1346,
19.0086


 112.4868,
111.1756, 105.6265

 15.0098, 13.9559,
11.4996


142.2919,
141.3039, 135.6945

 8.9126, 8.0900,
6.2856

176.9454,
176.4360, 170.9872

 4.7409, 4.1526,
2.9479

216.8124,
216.9560, 211.9231

 2.1292, 1.7593,
1.0681

262.2585,

 0.7050, 0.4616,

263.2485, 258.9208

0.0000

313.6489,
315.6978, 312.3989

■ 0.0000, 0.0000,
0.0000

■ 48.5074, 46.9684,
42.5856

■ 48.5074, 46.9684,
42.5856

■ 43.7224, 40.2211,
32.2881

■ 54.0001, 54.6317,
54.6573

■ 39.6122, 34.3491,
23.6778

■ 60.2241, 63.2371,
68.5783

■ 36.1466, 29.3180,
16.6652

■ 67.2067, 72.8175,
84.4234

■ 33.2920, 25.0888,
11.1509

■ 74.9725, 83.4024,
102.2621

■ 31.0112, 21.6191,
7.0244

■ 80.1047, 92.2954,
108.2006

■ 29.2630, 18.8627,
4.1600

■ 27.9997, 16.7677,
2.4087

■ 27.1865, 15.3392,
1.5279

Harmonies

Analogous

The Analogous color harmony consists of three colors that are next to each other on the color wheel.



49.6600, 46.9684, 48.6979



48.5074, 46.9684, 42.5856



46.3326, 46.9684, 39.0038

Triad

The Triadic color harmony groups three colors that are evenly spaced from another and form a triangle on the color wheel.



48.5074, 46.9684, 42.5856



40.1742, 46.9684, 46.5063



45.5146, 46.9684, 66.2950

Complementary

The Complementary color scheme is a pair of colors which are on the opposite of each other on the color wheel.



48.5074, 46.9684, 42.5856



47.8884, 54.0177, 68.2244

Split Complementary

Split-complementary colors differ from the complementary color scheme. The scheme consists of three colors, the original color and two neighbors of the complement color.



42.9931, 46.9684, 65.5653



48.5074, 46.9684, 42.5856



39.9741, 46.9684, 53.6637

Square

The Square scheme is like the rectangle color scheme, but the four colors are evenly spaced on the color wheel.



48.5074, 46.9684, 42.5856



41.5454, 46.9684, 41.1132



40.9877, 46.9684, 60.7709



47.8889, 46.9684, 62.6787

Rectangle

The Rectangle color scheme consists of four colors that form a rectangle on the color wheel.



48.5074, 46.9684, 42.5856



44.6289, 46.9684, 38.3097



40.9877, 46.9684, 60.7709



44.6552, 46.9684, 66.5575

Sweetspot

The Sweet Spot groups the original color and five complimentary colors.



48.5087, 46.9705, 42.5866



88.9454, 91.5770, 95.1928



50.4034, 45.0172, 60.9221



18.9013, 19.4122, 20.0700



0.0000, 0.0000, 0.0000



20.3446, 21.4041, 23.3091

Same Dimension

The Same Dimension uses a secret algorithm to generate beautiful new colors.



48.5087, 46.9705, 42.5866



72.4070, 68.5035, 58.8408



52.9404, 55.8340, 44.0638



12.0065, 12.2036, 12.3348



16.8205, 9.5741, 0.9614



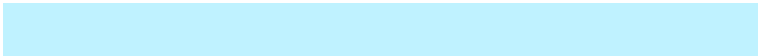
0.9992, 0.6528, 0.0733

Inverse Universe

The Inverse Universe completely reimagines the original color for something new.



47.8884, 54.0177, 68.2244



71.2472, 81.6256, 106.6079



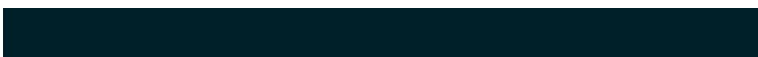
43.3351, 44.9112, 66.7067



11.9395, 12.9692, 15.1177



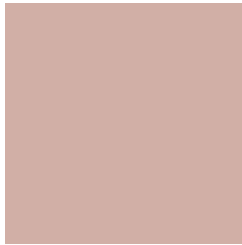
15.4915, 19.6296, 40.1649



0.9202, 1.2056, 2.2638

Previews

White Background



This preview shows how the XYZ color 48.5074, 46.9684, 42.5856 looks on a white background.

Color Contrast Check

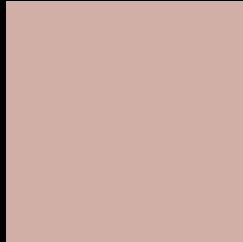
Large Text (above 18pt) WCAG AA × Fail

Any Text WCAG AA × Fail

Large Text (above 18pt) WCAG AAA × Fail

Any Text WCAG AAA × Fail

Black Background



This preview shows how the XYZ color 48.5074, 46.9684, 42.5856 looks on a black background.

Color Contrast Check

Large Text (above 18pt) WCAG AA ✓ Pass

Any Text WCAG AA ✓ Pass

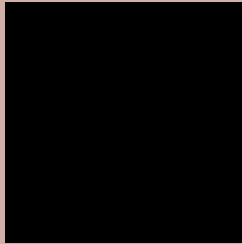
Large Text (above 18pt) WCAG AAA ✓ Pass

Any Text WCAG AAA ✓ Pass

If you want to check with other color combinations, try the [Color Contrast Checker](#).

XYZ 48.5074, 46.9684, 42.5856

Background



This preview shows how black text looks on a background with the XYZ color 48.5074, 46.9684, 42.5856.



This preview shows how white text looks on a background with the XYZ color 48.5074, 46.9684,

Color Blindness Simulation

Color vision deficiency is a very complex topic, and I could not describe the different causes any better than Wikipedia does, so if you want to learn more, you should check out their [article about color blindness](#).

Dichromacy



Original Color

48.5074, 46.9684, 42.5856

Protanopia

44.9699, 47.1770, 44.7661

Deuteranopia

47.8619, 46.9257, 42.6114



Tritanopia

50.3734, 46.8567, 52.2882

Trichromacy



Original Color

48.5074, 46.9684, 42.5856

Protanomaly

46.0465, 46.8405, 44.1503

Deuteranomaly

48.1404, 47.0692, 42.6244

Tritanomaly

49.5578, 46.8031, 48.5414

Monochromacy



Original Color

48.5074, 46.9684, 42.5856

Achromatopsia

45.5594, 47.9320, 52.1980

Achromatomaly

46.4520, 47.5595, 48.3266

CSS Examples

Text

The CSS property to change the color of the text to XYZ 48.5074, 46.9684, 42.5856 is called "color". The color property can be set on classes, ids or directly on the HTML element.

This example shows how text in the color `rgb(209, 175, 166)` looks like.

```
.text, #text, p{  
    color:rgb(209, 175, 166)  
}
```

If you want to add a text shadow in that color use the text-shadow property, you can generate a text shadow directly with our [CSS Text Shadow Generator](#).

Here you see how black text with a 4 pixel rgb(209, 175, 166) colored shadow looks like.

```
.shadow{ text-shadow: 4px 4px 2px rgb(209, 175, 166) }
```

Border

The CSS property to change the border of an element to XYZ 48.5074, 46.9684, 42.5856 is called "border". The border property can be set on classes, ids or directly on the HTML element.

This example shows the color as border, it can be applied via the CSS property "border" or "border-color".

```
.border, #border, table{ border:4px solid rgb(209, 175, 166) }
```


If only the border color should be changed use the property `border-color`.

```
.border{ border-color:rgb(209, 175, 166) }
```

If you want to add a box shadow in that color use:

Here you see how a box with a 4 pixel `rgb(209, 175, 166)` colored shadow looks like.

```
.boxshadow{ -moz-box-shadow:4px 4px 4px  
4px rgb(209, 175, 166); -webkit-box-  
shadow:4px 4px 4px 4px rgb(209, 175, 166);  
box-shadow:4px 4px 4px 4px rgb(209, 175,  
166) }
```

Background

The CSS property to change the background color of an element to XYZ 48.5074, 46.9684, 42.5856 is called "background". The background property can be set on classes, ids or directly on the HTML element.

```
.background, #background, body{  
background: rgb(209, 175, 166) }
```

If only the background color should be changed can be used:

```
.background{ background-color: rgb(209,  
175, 166) }
```

This example shows the color as background, it is applied via the CSS property "background".

To optimize and compress your CSS code, you can use our [online CSS compressor and optimizer](#) based on csstidy. If you want to create a linear or radial gradient as background or border, check our [CSS Gradient Generator](#).

Hey! You found this booklet interesting? Support Converting Colors with the new Membership Option!

The pro membership hides all ads, plus gives you double the colors in the color bucket, and more awesome pro features!

[Learn more, Memberships starting at \\$2.50/m!](#)

**Follow me
on Twitter!**

@ConvertingColor