

Converting Colors

XYZ(48.5394, 45.9352, 47.3312)

Have a look what the booklet for
XYZ(48.5394, 45.9352, 47.3312)
contains.

XYZ(48.6014, 46.0495, 47.4012)	3
<i>Conversions</i>	4
<i>Details</i>	6
<i>Harmonies</i>	12
<i>Previews</i>	24
<i>Color Blindness Simulation</i>	28
<i>CSS Examples</i>	31

Color

**XYZ(48.6014, 46.0495,
47.4012)**

Conversions

Conversions Part 1

Format	Color
Hex	D0ACB0
RGB	208, 172, 176
RGB Percent	82%, 67%, 69%
CMY	0.1843, 0.3255, 0.3098
CMYK	0.00, 0.17, 0.15, 0.18
HSL	353°, 28%, 75%
HSV	353°, 17%, 82%
XYZ	48.6014, 46.0495, 47.4012
YIQ	183.2200, 20.1720, 8.8760

Conversions

Conversions Part 2

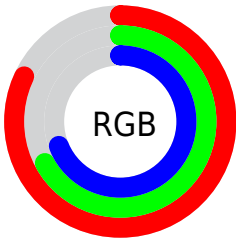
Format	Color
R _Y B	208, 172, 176
Decimal	13675696
CIE Lab	73.58, 13.72, 2.86
CIE LCh	74, 14.014, 11.797
Yxy	46.0495, 0.3421, 0.3242
Android (android.graphics.Color)	4291865776 (0xFFD0ACB0)
YUV	183.2200, -3.5595, 21.7321
Hunter-Lab	67.8598, 9.0877, 6.0868

Details

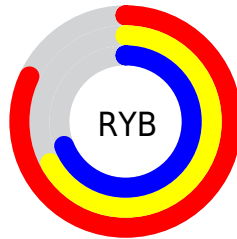
The XYZ color **48.6014, 46.0495, 47.4012** is a light color, and the websafe version is hex **CC9999**. A complement of this color would be **50.4700, 58.2431, 65.7115**, and the grayscale version is **45.1427, 47.4936, 51.7205**.

A 20% lighter version of the original color is **83.2746, 82.0244, 87.7872**, and **23.4914, 21.6605, 22.0115** is the 20% darker color. If you saturate the color by 10%, you get **43.2417, 38.0610, 37.1947**, and if you desaturate by 10%, it is **54.8325, 55.3810, 59.1288**.

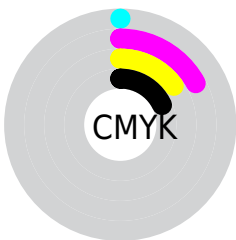
Distribution



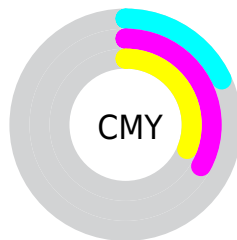
- Red (82%)
- Green (67%)
- Blue (69%)



- Red (82%)
- Yellow (67%)
- Blue (69%)



- Cyan (0%)
- Magenta (17%)
- Yellow (15%)
- Black (18%)





- Cyan (18%)
- Magenta (33%)
- Yellow (31%)

Brightness & Saturation Gradients


These gradients show how the XYZ color 48.6014, 46.0495, 47.4012 changes by changing the brightness by 10 percent. The first figure shows a shift by +10% for each color and the second figure -10%.


Similar to the brightness gradients but the following saturation gradients show a change of the XYZ color 48.6014, 46.0495, 47.4012 by changing the saturation by 10% instead.

 48.6014, 46.0495,
47.4012

 48.6014, 46.0495,
47.4012


371.7140,
371.0076, 392.8537

 34.5166, 32.2849,
32.9963


 87.3034, 84.2931,
87.6684

 23.4555, 21.5792,
21.8525


112.6514,
109.5408, 114.3678

 15.0528, 13.5480,
13.5513


142.4845,
139.3851, 146.0025

 8.9430, 7.8070,
7.6741

177.1681,
174.2102, 182.9910

 4.7608, 3.9717,
3.8024

217.0674,
214.4006, 225.7518

 2.1409, 1.6577,
1.5176

262.5480,

 0.7113, 0.3961,

260.3408, 274.7035

0.2310

313.9751,
312.4150, 330.2646

■ 0.0000, 0.0000,
0.0000

■ 48.6014, 46.0495,
47.4012

■ 48.6014, 46.0495,
47.4012

■ 43.2417, 38.0610,
37.1947

■ 54.8325, 55.3810,
59.1288

■ 38.7108, 31.3478,
28.4441

■ 61.9674, 66.1067,
72.4332

■ 34.9684, 25.8457,
21.0837

■ 70.0417, 78.2829,
87.3711

■ 31.9689, 21.4824,
15.0418

■ 79.0224, 91.8299,
103.9733

■ 29.6626, 18.1778,
10.2401

■ 79.8226, 92.1500,
108.1874

■ 27.9931, 15.8417,
6.5920

■ 26.8954, 14.3686,
3.9995

■ 26.2839, 13.6159,
2.3461

■ 26.1682, 13.4722,
2.0367

Harmonies

Analogous

The Analogous color harmony consists of three colors that are next to each other on the color wheel.



48.4537, 46.0495, 54.5257



48.6014, 46.0495, 47.4012



47.4186, 46.0495, 41.5825

Triad

The Triadic color harmony groups three colors that are evenly spaced from another and form a triangle on the color wheel.



48.6014, 46.0495, 47.4012



40.6686, 46.0495, 40.6377



42.2967, 46.0495, 64.2553

Complementary

The Complementary color scheme is a pair of colors which are on the opposite of each other on the color wheel.



48.6014, 46.0495, 47.4012



50.4700, 58.2431, 65.7115

Split Complementary

Split-complementary colors differ from the complementary color scheme. The scheme consists of three colors, the original color and two neighbors of the complement color.



40.3111, 46.0495, 59.7979



48.6014, 46.0495, 47.4012



39.3958, 46.0495, 45.9961

Square

The Square scheme is like the rectangle color scheme, but the four colors are evenly spaced on the color wheel.



48.6014, 46.0495, 47.4012



42.8016, 46.0495, 37.9313



39.2674, 46.0495, 52.9825



44.7502, 46.0495, 64.7222

Rectangle

The Rectangle color scheme consists of four colors that form a rectangle on the color wheel.



48.6014, 46.0495, 47.4012



46.0598, 46.0495, 39.0481



39.2674, 46.0495, 52.9825



41.5548, 46.0495, 63.1557

Sweetspot

The Sweet Spot groups the original color and five complimentary colors.



48.6027, 46.0516, 47.4022



89.3450, 91.4245, 98.2596



50.9861, 46.8703, 66.0346



18.9583, 19.3205, 20.7227



0.0000, 0.0000, 0.0000



20.3446, 21.4041, 23.3091

Same Dimension

The Same Dimension uses a secret algorithm to generate beautiful new colors.



48.6027, 46.0516, 47.4022



73.5426, 67.7678, 68.4895



50.9770, 51.4237, 46.2712



11.8613, 11.8293, 12.5456



16.3273, 8.4037, 1.3636



0.9313, 0.4772, 0.1731

Inverse Universe

The Inverse Universe completely reimagines the original color for something new.



48.6027, 46.0516, 47.4022



73.5426, 67.7678, 68.4895



47.7364, 51.9990, 67.1958



11.8613, 11.8293, 12.5456



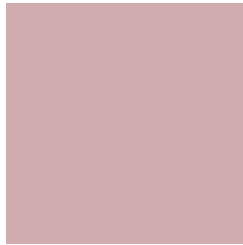
16.3273, 8.4037, 1.3636



0.9313, 0.4772, 0.1731

Previews

White Background



This preview shows how the XYZ color 48.6014, 46.0495, 47.4012 looks on a white background.

Color Contrast Check

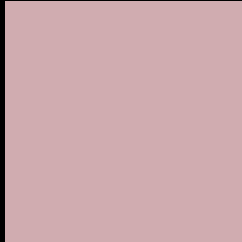
Large Text (above 18pt) WCAG AA × Fail

Any Text WCAG AA × Fail

Large Text (above 18pt) WCAG AAA × Fail

Any Text WCAG AAA × Fail

Black Background



This preview shows how the XYZ color 48.6014, 46.0495, 47.4012 looks on a black background.

Color Contrast Check

Large Text (above 18pt) WCAG AA ✓ Pass

Any Text WCAG AA ✓ Pass

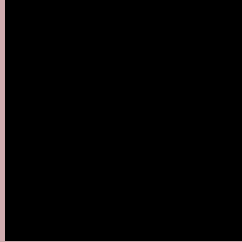
Large Text (above 18pt) WCAG AAA ✓ Pass

Any Text WCAG AAA ✓ Pass

If you want to check with other color combinations, try the [Color Contrast Checker](#).

XYZ 48.6014, 46.0495, 47.4012

Background



This preview shows how black text looks on a background with the XYZ color 48.6014, 46.0495, 47.4012.



This preview shows how white text looks on a background with the XYZ color 48.6014, 46.0495,

Color Blindness Simulation

Color vision deficiency is a very complex topic, and I could not describe the different causes any better than Wikipedia does, so if you want to learn more, you should check out their [article about color blindness](#).

Dichromacy



Original Color

48.6014, 46.0495, 47.4012

Protanopia

44.4289, 46.1691, 50.2859

Deuteranopia

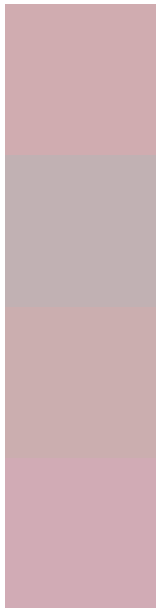
46.8873, 46.0344, 46.9718



Tritanopia

49.5091, 46.1418, 51.6442

Trichromacy



Original Color

48.6014, 46.0495, 47.4012

Protanomaly

45.8511, 46.0364, 49.1171

Deuteranomaly

47.5025, 46.0638, 46.9450

Tritanomaly

49.1979, 46.0173, 50.0053

Monochromacy



Original Color

48.6014, 46.0495, 47.4012

Achromatopsia

45.0092, 47.3531, 51.5676

Achromatomaly

46.0965, 46.7420, 49.7726

CSS Examples

Text

The CSS property to change the color of the text to XYZ 48.6014, 46.0495, 47.4012 is called "color". The color property can be set on classes, ids or directly on the HTML element.

This example shows how text in the color `rgb(208, 172, 176)` looks like.

```
.text, #text, p{  
    color:rgb(208, 172, 176)  
}
```

If you want to add a text shadow in that color use the text-shadow property, you can generate a text shadow directly with our [CSS Text Shadow Generator](#).

Here you see how black text with a 4 pixel rgb(208, 172, 176) colored shadow looks like.

```
.shadow{ text-shadow: 4px 4px 2px rgb(208, 172, 176) }
```

Border

The CSS property to change the border of an element to XYZ 48.6014, 46.0495, 47.4012 is called "border". The border property can be set on classes, ids or directly on the HTML element.

This example shows the color as border, it can be applied via the CSS property "border" or "border-color".

```
.border, #border, table{ border:4px solid rgb(208, 172, 176) }
```


If only the border color should be changed use the property border-color.

```
.border{ border-color:rgb(208, 172, 176) }
```

If you want to add a box shadow in that color use:

Here you see how a box with a 4 pixel rgb(208, 172, 176) colored shadow looks like.

```
.boxshadow{ -moz-box-shadow:4px 4px 4px  
4px rgb(208, 172, 176); -webkit-box-  
shadow:4px 4px 4px 4px rgb(208, 172, 176);  
box-shadow:4px 4px 4px 4px rgb(208, 172,  
176) }
```

Background

The CSS property to change the background color of an element to XYZ 48.6014, 46.0495, 47.4012 is called "background". The background property can be set on classes, ids or directly on the HTML element.

```
.background, #background, body{  
background: rgb(208, 172, 176) }
```

If only the background color should be changed can be used:

```
.background{ background-color: rgb(208,  
172, 176) }
```

This example shows the color as background, it is applied via the CSS property "background".

To optimize and compress your CSS code, you can use our [online CSS compressor and optimizer](#) based on csstidy. If you want to create a linear or radial gradient as background or border, check our [CSS Gradient Generator](#).

Hey! You found this booklet interesting? Support Converting Colors with the new Membership Option!

The pro membership hides all ads, plus gives you double the colors in the color bucket, and more awesome pro features!

[Learn more, Memberships starting at \\$2.50/m!](#)

**Follow me
on Twitter!**

@ConvertingColor