

# Converting Colors

XYZ(48.5397, 48.4775, 53.7936)

Have a look what the booklet for  
XYZ(48.5397, 48.4775, 53.7936)  
contains.

<b>XYZ(48.5195, 48.5059, 53.8190)</b> .....	3
<b><i>Conversions</i></b> .....	4
<b><i>Details</i></b> .....	6
<b><i>Harmonies</i></b> .....	12
<b><i>Previews</i></b> .....	24
<b><i>Color Blindness Simulation</i></b> .....	28
<b><i>CSS Examples</i></b> .....	31

# Color

**XYZ(48.5195, 48.5059,  
53.8190)**

# Conversions

## Conversions Part 1

<b>Format</b>	<b>Color</b>
Hex	C5B5BB
RGB	197, 181, 187
RGB Percent	77%, 71%, 73%
CMY	0.2274, 0.2902, 0.2667
CMYK	0.00, 0.08, 0.05, 0.23
HSL	338°, 12%, 74%
HSV	338°, 8%, 77%
XYZ	48.5195, 48.5059, 53.8190
YIQ	186.4680, 7.6100, 5.2580

# Conversions

## Conversions Part 2

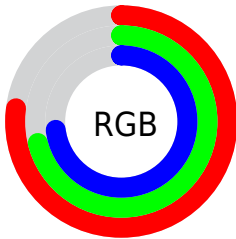
Format	Color
R <sub>Y</sub> B	197, 181, 187
Decimal	12957115
CIE Lab	75.14, 6.75, -0.99
CIE LCh	75, 6.818, 351.653
Yxy	48.5059, 0.3217, 0.3216
Android (android.graphics.Color)	4291147195 (0xFFC5B5BB)
YUV	186.4680, 0.2623, 9.2366
Hunter-Lab	69.6462, 2.4725, 2.9360

# Details

The XYZ color **48.5195, 48.5059, 53.8190** is a light color, and the websafe version is hex **CCCCCC**. A complement of this color would be **48.4282, 53.5192, 57.0707**, and the grayscale version is **46.9314, 49.3754, 53.7699**.

A 20% lighter version of the original color is **87.3349, 88.1103, 97.1980**, and **23.3499, 22.9992, 25.7629** is the 20% darker color. If you saturate the color by 10%, you get **43.5315, 40.5496, 45.9284**, and if you desaturate by 10%, it is **54.1898, 57.6445, 62.4961**.

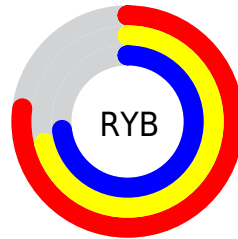
# Distribution



Red (77%)

Green (71%)

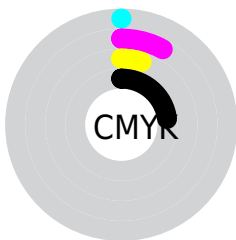
Blue (73%)



Red (77%)

Yellow (71%)

Blue (73%)

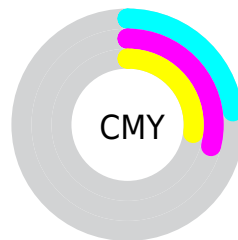


Cyan (0%)

Magenta (8%)

Yellow (5%)

Black (23%)



Cyan (23%)

Magenta (29%)

Yellow (27%)

# Brightness & Saturation Gradients

These gradients show how the XYZ color 48.5195, 48.5059, 53.8190 changes by changing the brightness by 10 percent. The first figure shows a shift by +10% for each color and the second figure -10%.

Similar to the brightness gradients but the following saturation gradients show a change of the XYZ color 48.5195, 48.5059, 53.8190 by changing the saturation by 10% instead.



■ 48.5195, 48.5059,  
53.8190

■ 48.5195, 48.5059,  
53.8190

371.3960,  
380.7939, 418.5745

■ 34.4514, 34.2277,  
38.0648

■ 87.1824, 87.9572,  
97.2622

■ 23.4051, 23.0686,  
25.7307

112.5080,  
113.8990, 125.7882

■ 15.0153, 14.6441,  
16.3984

142.3167,  
144.4975, 159.4085

■ 8.9165, 8.5700,  
9.6491

176.9740,  
180.1371, 198.5418

■ 4.7434, 4.4618,  
5.0644

216.8453,  
221.2021, 243.6065

■ 2.1307, 1.9351,  
2.2257

262.2958,

■ 0.7058, 0.5694,

268.0770, 295.0211

0.6891

313.6909,  
321.1461, 353.2043

■ 0.0000, 0.0000,  
0.0000

■ 48.5195, 48.5059,  
53.8190

■ 48.5195, 48.5059,  
53.8190

■ 43.5315, 40.5496,  
45.9284

■ 54.1898, 57.6445,  
62.4961

■ 39.1951, 33.7208,  
38.7984

■ 60.5631, 68.0046,  
71.9782

■ 35.4836, 27.9698,  
32.4061

■ 67.6646, 79.6314,  
82.2874

■ 32.3664, 23.2409,  
26.7263

■ 73.9647, 89.4619,  
92.9262

■ 29.8106, 19.4729,  
21.7322

■ 75.8193, 90.2037,  
102.6923

■ 27.7798, 16.5985,  
17.3949

■ 76.8363, 90.6105,  
108.0476

■ 26.2329, 14.5414,  
13.6833

■ 25.1222, 13.2120,  
10.5630

■ 24.3767, 12.4750,  
7.9905

# Harmonies

## Analogous

The Analogous color harmony consists of three colors that are next to each other on the color wheel.



48.0118, 48.5059, 57.1959



48.5195, 48.5059, 53.8190



48.3707, 48.5059, 50.3184

# Triad

The Triadic color harmony groups three colors that are evenly spaced from another and form a triangle on the color wheel.



48.5195, 48.5059, 53.8190



45.2233, 48.5059, 46.6791



44.6301, 48.5059, 58.3920

# Complementary

The Complementary color scheme is a pair of colors which are on the opposite of each other on the color wheel.



48.5195, 48.5059, 53.8190



48.4282, 53.5192, 57.0707

# Split Complementary

Split-complementary colors differ from the complementary color scheme. The scheme consists of three colors, the original color and two neighbors of the complement color.



43.9081, 48.5059, 55.3922



48.5195, 48.5059, 53.8190



44.2463, 48.5059, 48.6631

# Square

The Square scheme is like the rectangle color scheme, but the four colors are evenly spaced on the color wheel.



48.5195, 48.5059, 53.8190



46.4528, 48.5059, 46.3005



43.7689, 48.5059, 51.8229



45.7558, 48.5059, 59.9129



# Rectangle

The Rectangle color scheme consists of four colors that form a rectangle on the color wheel.



48.5195, 48.5059, 53.8190



47.9204, 48.5059, 48.3760



43.7689, 48.5059, 51.8229



44.3329, 48.5059, 57.5169

# Sweetspot

The Sweet Spot groups the original color and five complimentary colors.



48.5209, 48.5080, 53.8200



92.9354, 96.5854, 105.6838



48.0560, 48.1403, 59.5833



19.9142, 20.7090, 22.6545



0.0000, 0.0000, 0.0000



20.3446, 21.4041, 23.3091



# Same Dimension

The Same Dimension uses a secret algorithm to generate beautiful new colors.



48.5209, 48.5080, 53.8200



84.9866, 83.8112, 93.4050



48.2741, 49.0206, 50.6361



10.7956, 10.7016, 11.9068



15.9924, 8.1465, 5.1696



0.7923, 0.3997, 0.4292



# Inverse Universe

The Inverse Universe completely reimagines the original color for something new.



48.5209, 48.5080, 53.8200



84.9866, 83.8112, 93.4050



48.6807, 52.9463, 60.4780



10.7956, 10.7016, 11.9068



15.9924, 8.1465, 5.1696

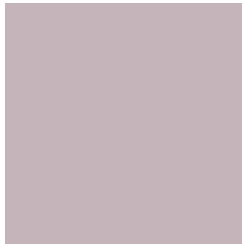


0.7923, 0.3997, 0.4292



# Previews

## White Background



This preview shows how the XYZ color 48.5195, 48.5059, 53.8190 looks on a white background.

## Color Contrast Check

Large Text (above 18pt) WCAG AA × Fail

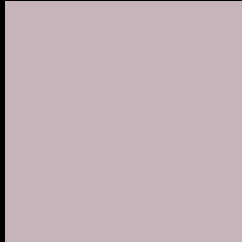
Any Text WCAG AA × Fail

Large Text (above 18pt) WCAG AAA × Fail

Any Text WCAG AAA × Fail



# Black Background



This preview shows how the XYZ color 48.5195, 48.5059, 53.8190 looks on a black background.

## Color Contrast Check

Large Text (above 18pt) WCAG AA ✓ Pass

Any Text WCAG AA ✓ Pass

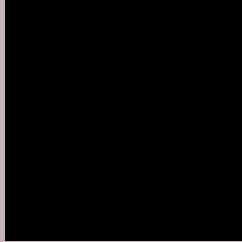
Large Text (above 18pt) WCAG AAA ✓ Pass

Any Text WCAG AAA ✓ Pass

If you want to check with other color combinations, try the [Color Contrast Checker](#).

# XYZ 48.5195, 48.5059, 53.8190

## Background



This preview shows how black text looks on a background with the XYZ color 48.5195, 48.5059, 53.8190.



This preview shows how white text looks on a background with the XYZ color 48.5195, 48.5059,



# Color Blindness Simulation

Color vision deficiency is a very complex topic, and I could not describe the different causes any better than Wikipedia does, so if you want to learn more, you should check out their [article about color blindness](#).

## Dichromacy



### Original Color

48.5195, 48.5059, 53.8190

### Protanopia

46.8193, 48.5199, 55.0417

### Deuteranopia

49.4469, 48.3846, 53.7467



## Tritanopia

49.3476, 48.5433, 57.8078

# Trichromacy



## Original Color

48.5195, 48.5059, 53.8190

## Protanomaly

47.4964, 48.5742, 54.4494

## Deuteranomaly

49.1103, 48.5097, 53.7886

## Tritanomaly

49.0139, 48.4099, 56.0509

# Monochromacy



## Original Color

48.5195, 48.5059, 53.8190

## Achromatopsia

46.6715, 49.1021, 53.4722

## Achromatomaly

47.2386, 48.7733, 53.3788

# CSS Examples

## Text

The CSS property to change the color of the text to XYZ 48.5195, 48.5059, 53.8190 is called "color". The color property can be set on classes, ids or directly on the HTML element.

This example shows how text in the color `rgb(197, 181, 187)` looks like.

```
.text, #text, p{  
    color:rgb(197, 181, 187)  
}
```

If you want to add a text shadow in that color use the text-shadow property, you can generate a text shadow directly with our [CSS Text Shadow Generator](#).

Here you see how black text with a 4 pixel rgb(197, 181, 187) colored shadow looks like.

```
.shadow{ text-shadow: 4px 4px 2px rgb(197, 181, 187) }
```

## Border

The CSS property to change the border of an element to XYZ 48.5195, 48.5059, 53.8190 is called "border". The border property can be set on classes, ids or directly on the HTML element.

This example shows the color as border, it can be applied via the CSS property "border" or "border-color".

```
.border, #border, table{ border:4px solid rgb(197, 181, 187) }
```



If only the border color should be changed use the property `border-color`.

```
.border{ border-color:rgb(197, 181, 187) }
```

If you want to add a box shadow in that color use:

Here you see how a box with a 4 pixel `rgb(197, 181, 187)` colored shadow looks like.

```
.boxshadow{ -moz-box-shadow:4px 4px 4px  
4px rgb(197, 181, 187); -webkit-box-  
shadow:4px 4px 4px 4px rgb(197, 181, 187);  
box-shadow:4px 4px 4px 4px rgb(197, 181,  
187) }
```

# Background

The CSS property to change the background color of an element to XYZ 48.5195, 48.5059, 53.8190 is called "background". The background property can be set on classes, ids or directly on the HTML element.

```
.background, #background, body{  
background: rgb(197, 181, 187) }
```

If only the background color should be changed can be used:

```
.background{ background-color: rgb(197,  
181, 187) }
```

This example shows the color as background, it is applied via the CSS property "background".

To optimize and compress your CSS code, you can use our [online CSS compressor and optimizer](#) based on csstidy. If you want to create a linear or radial gradient as background or border, check our [CSS Gradient Generator](#).

Hey! You found this booklet interesting? Support Converting Colors with the new Membership Option!

The pro membership hides all ads, plus gives you double the colors in the color bucket, and more awesome pro features!

**[Learn more, Memberships starting at \\$2.50/m!](#)**

**Follow me  
on Twitter!**

@ConvertingColor