

Converting Colors

XYZ(48.5503, 46.7879, 46.8551)

Have a look what the booklet for
XYZ(48.5503, 46.7879, 46.8551)
contains.

XYZ(48.5214, 46.8769, 47.0482)	3
<i>Conversions</i>	4
<i>Details</i>	6
<i>Harmonies</i>	12
<i>Previews</i>	24
<i>Color Blindness Simulation</i>	28
<i>CSS Examples</i>	31

Color

**XYZ(48.5214, 46.8769,
47.0482)**

Conversions

Conversions Part 1

Format	Color
Hex	CEAF AF
RGB	206, 175, 175
RGB Percent	81%, 69%, 69%
CMY	0.1922, 0.3137, 0.3137
CMYK	0.00, 0.15, 0.15, 0.19
HSL	0°, 24%, 75%
HSV	0°, 15%, 81%
XYZ	48.5214, 46.8769, 47.0482
YIQ	184.2690, 18.4760, 6.5720

Conversions

Conversions Part 2

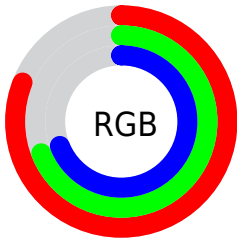
Format	Color
R_{YB}	206, 175, 175
Decimal	13545391
CIE _{Lab}	74.11, 11.20, 4.16
CIE _{LCh}	74, 11.948, 20.385
Yxy	46.8769, 0.3406, 0.3291
Android (android.graphics.Color)	4291735471 (0xFFCEAF _{AF})
YUV	184.2690, -4.5696, 19.0581
Hunter-Lab	68.4667, 6.6837, 7.1844

Details

The XYZ color **48.5214, 46.8769, 47.0482** is a light color, and the websafe version is hex **CC9999**. A complement of this color would be **50.8906, 57.7114, 66.8501**, and the grayscale version is **45.7270, 48.1084, 52.3900**.

A 20% lighter version of the original color is **84.0988, 84.1250, 86.6682**, and **23.4206, 22.1753, 21.7848** is the 20% darker color. If you saturate the color by 10%, you get **42.9430, 38.7144, 35.9566**, and if you desaturate by 10%, it is **55.0226, 56.3901, 59.9713**.

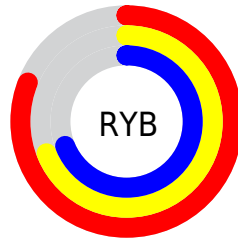
Distribution



Red (81%)

Green (69%)

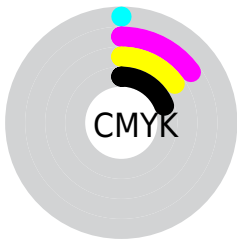
Blue (69%)



Red (81%)

Yellow (69%)

Blue (69%)

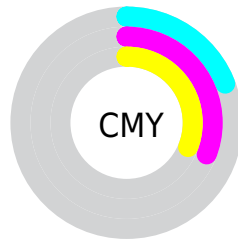


Cyan (0%)

Magenta (15%)

Yellow (15%)

Black (19%)



Cyan (19%)


Magenta (31%)


Yellow (31%)

Brightness & Saturation Gradients


These gradients show how the XYZ color 48.5214, 46.8769, 47.0482 changes by changing the brightness by 10 percent. The first figure shows a shift by +10% for each color and the second figure -10%.


Similar to the brightness gradients but the following saturation gradients show a change of the XYZ color 48.5214, 46.8769, 47.0482 by changing the saturation by 10% instead.


 48.5214, 46.8769,
47.0482

 48.5214, 46.8769,
47.0482


371.4034,
374.3230, 391.4062

 34.4529, 32.9384,
32.7191


 87.1852, 85.5298,
87.1363

 23.4063, 22.0792,
21.6420


112.5113,
111.0130, 113.7324

 15.0162, 13.9151,
13.3983


142.3206,
141.1132, 145.2546

 8.9171, 8.0617,
7.5694

176.9785,
176.2148, 182.1215

 4.7438, 4.1344,
3.7369

216.8504,
216.7022, 224.7516

 2.1310, 1.7490,
1.4822

262.3016,

 0.7060, 0.4551,

262.9597, 273.5633

0.2046

313.6975,
315.3718, 328.9754

■ 0.0000, 0.0000,
0.0000

■ 48.5214, 46.8769,
47.0482

■ 48.5214, 46.8769,
47.0482

■ 42.9430, 38.7144,
35.9566

■ 55.0226, 56.3901,
59.9713

■ 38.2418, 31.8353,
26.6109

■ 62.4816, 67.3045,
74.8002

■ 34.3746, 26.1764,
18.9230

■ 70.9364, 79.6759,
91.6089

■ 31.2926, 21.6665,
12.7962

■ 79.2638, 91.8619,
108.1612

■ 28.9420, 18.2268,
8.1238

■ 27.2624, 15.7690,
4.7853

■ 26.1838, 14.1905,
2.6416

■ 25.6206, 13.3662,
1.5225

■ 25.4540, 13.1225,
1.1913

Harmonies

Analogous

The Analogous color harmony consists of three colors that are next to each other on the color wheel.



48.7331, 46.8769, 53.0331



48.5214, 46.8769, 47.0482



47.2285, 46.8769, 42.4966

Triad

The Triadic color harmony groups three colors that are evenly spaced from another and form a triangle on the color wheel.



48.5214, 46.8769, 47.0482



41.4622, 46.8769, 43.8949



43.8719, 46.8769, 63.5534

Complementary

The Complementary color scheme is a pair of colors which are on the opposite of each other on the color wheel.



48.5214, 46.8769, 47.0482



50.8906, 57.7114, 66.8501

Split Complementary

Split-complementary colors differ from the complementary color scheme. The scheme consists of three colors, the original color and two neighbors of the complement color.



41.9845, 46.8769, 60.6601



48.5214, 46.8769, 47.0482



40.6229, 46.8769, 49.0993

Square

The Square scheme is like the rectangle color scheme, but the four colors are evenly spaced on the color wheel.



48.5214, 46.8769, 47.0482



43.1382, 46.8769, 40.7796



40.8110, 46.8769, 55.2535



46.0027, 46.8769, 62.8937

Rectangle

The Rectangle color scheme consists of four colors that form a rectangle on the color wheel.



48.5214, 46.8769, 47.0482



45.9497, 46.8769, 40.7330



40.8110, 46.8769, 55.2535



43.1890, 46.8769, 62.9559

Sweetspot

The Sweet Spot groups the original color and five complimentary colors.



48.5227, 46.8790, 47.0492



89.1317, 91.3400, 97.1340



51.9246, 48.2386, 64.9671



18.9067, 19.3001, 20.4504



0.0000, 0.0000, 0.0000



20.3446, 21.4041, 23.3091

Same Dimension

The Same Dimension uses a secret algorithm to generate beautiful new colors.



48.5227, 46.8790, 47.0492



75.5874, 71.5212, 70.2076



51.7139, 53.2614, 48.1129



11.2125, 11.2139, 11.6530



15.6737, 8.0804, 0.7336



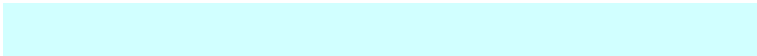
0.8086, 0.4169, 0.0379

Inverse Universe

The Inverse Universe completely reimagines the original color for something new.



50.8906, 57.7114, 66.8501



80.1310, 92.3063, 108.2013



47.3422, 50.6146, 65.6673



11.5432, 12.7268, 14.4185



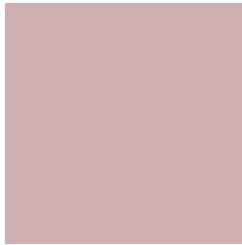
20.4471, 29.9181, 40.6534



1.0549, 1.5435, 2.0973

Previews

White Background



This preview shows how the XYZ color 48.5214, 46.8769, 47.0482 looks on a white background.

Color Contrast Check

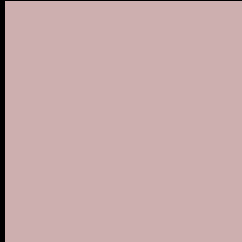
Large Text (above 18pt) WCAG AA × Fail

Any Text WCAG AA × Fail

Large Text (above 18pt) WCAG AAA × Fail

Any Text WCAG AAA × Fail

Black Background



This preview shows how the XYZ color 48.5214, 46.8769, 47.0482 looks on a black background.

Color Contrast Check

Large Text (above 18pt) WCAG AA ✓ Pass

Any Text WCAG AA ✓ Pass

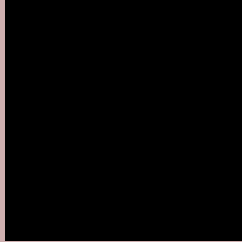
Large Text (above 18pt) WCAG AAA ✓ Pass

Any Text WCAG AAA ✓ Pass

If you want to check with other color combinations, try the [Color Contrast Checker](#).

XYZ 48.5214, 46.8769, 47.0482

Background



This preview shows how black text looks on a background with the XYZ color 48.5214, 46.8769, 47.0482.



This preview shows how white text looks on a background with the XYZ color 48.5214, 46.8769,

Color Blindness Simulation

Color vision deficiency is a very complex topic, and I could not describe the different causes any better than Wikipedia does, so if you want to learn more, you should check out their [article about color blindness](#).

Dichromacy



Original Color

48.5214, 46.8769, 47.0482

Protanopia

45.1143, 47.1497, 49.3708

Deuteranopia

47.8918, 46.8423, 47.0747



Tritanopia

49.6453, 46.7404, 53.4189

Trichromacy



Original Color

48.5214, 46.8769, 47.0482

Protanomaly

46.1483, 46.7920, 48.7190

Deuteranomaly

48.1650, 46.9832, 47.0875

Tritanomaly

49.4154, 46.9564, 51.2588

Monochromacy



Original Color

48.5214, 46.8769, 47.0482

Achromatopsia

45.5594, 47.9320, 52.1980

Achromatomaly

46.6026, 47.5904, 50.4457

CSS Examples

Text

The CSS property to change the color of the text to XYZ 48.5214, 46.8769, 47.0482 is called "color". The color property can be set on classes, ids or directly on the HTML element.

This example shows how text in the color `rgb(206, 175, 175)` looks like.

```
.text, #text, p{  
    color:rgb(206, 175, 175)  
}
```

If you want to add a text shadow in that color use the text-shadow property, you can generate a text shadow directly with our [CSS Text Shadow Generator](#).

Here you see how black text with a 4 pixel rgb(206, 175, 175) colored shadow looks like.

```
.shadow{ text-shadow: 4px 4px 2px rgb(206, 175, 175) }
```

Border

The CSS property to change the border of an element to XYZ 48.5214, 46.8769, 47.0482 is called "border". The border property can be set on classes, ids or directly on the HTML element.

This example shows the color as border, it can be applied via the CSS property "border" or "border-color".

```
.border, #border, table{ border:4px solid rgb(206, 175, 175) }
```


If only the border color should be changed use the property `border-color`.

```
.border{ border-color:rgb(206, 175, 175) }
```

If you want to add a box shadow in that color use:

Here you see how a box with a 4 pixel `rgb(206, 175, 175)` colored shadow looks like.

```
.boxshadow{ -moz-box-shadow:4px 4px 4px  
4px rgb(206, 175, 175); -webkit-box-  
shadow:4px 4px 4px 4px rgb(206, 175, 175);  
box-shadow:4px 4px 4px 4px rgb(206, 175,  
175) }
```

Background

The CSS property to change the background color of an element to XYZ 48.5214, 46.8769, 47.0482 is called "background". The background property can be set on classes, ids or directly on the HTML element.

```
.background, #background, body{  
background: rgb(206, 175, 175) }
```

If only the background color should be changed can be used:

```
.background{ background-color: rgb(206,  
175, 175) }
```

This example shows the color as background, it is applied via the CSS property "background".

To optimize and compress your CSS code, you can use our [online CSS compressor and optimizer](#) based on csstidy. If you want to create a linear or radial gradient as background or border, check our [CSS Gradient Generator](#).

Hey! You found this booklet interesting? Support Converting Colors with the new Membership Option!

The pro membership hides all ads, plus gives you double the colors in the color bucket, and more awesome pro features!

[Learn more, Memberships starting at \\$2.50/m!](#)

**Follow me
on Twitter!**

@ConvertingColor