

Converting Colors

XYZ(48.5601, 50.3135, 49.0843)

Have a look what the booklet for
XYZ(48.5601, 50.3135, 49.0843)
contains.

XYZ(48.6207, 50.2025, 49.2469)	3
<i>Conversions</i>	4
<i>Details</i>	6
<i>Harmonies</i>	12
<i>Previews</i>	24
<i>Color Blindness Simulation</i>	28
<i>CSS Examples</i>	31

Color

**XYZ(48.6207, 50.2025,
49.2469)**

Conversions

Conversions Part 1

Format	Color
Hex	C5BAB2
RGB	197, 186, 178
RGB Percent	77%, 73%, 70%
CMY	0.2274, 0.2706, 0.3020
CMYK	0.00, 0.06, 0.10, 0.23
HSL	25°, 14%, 74%
HSV	25°, 10%, 77%
XYZ	48.6207, 50.2025, 49.2469
YIQ	188.3770, 9.1240, -0.1560

Conversions

Conversions Part 2

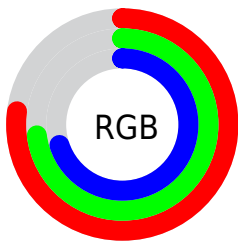
Format	Color
RYB	197, 192, 178
Decimal	12958386
CIELab	76.19, 2.50, 5.43
CIELCh	76, 5.978, 65.324
Yxy	50.2025, 0.3284, 0.3390
Android (android.graphics.Color)	4291148466 (0xFFC5BAB2)
YUV	188.3770, -5.1159, 7.5624
Hunter-Lab	70.8537, -1.5051, 8.3881

Details

The XYZ color **48.6207, 50.2025, 49.2469** is a light color, and the websafe version is hex **CCCCCC**. A complement of this color would be **46.6355, 49.8903, 59.9955**, and the grayscale version is **48.0401, 50.5419, 55.0401**.

A 20% lighter version of the original color is **87.4765, 90.5156, 90.7027**, and **23.4169, 24.0954, 22.8187** is the 20% darker color. If you saturate the color by 10%, you get **44.4766, 44.8553, 38.7976**, and if you desaturate by 10%, it is **53.2434, 56.0511, 61.2584**.

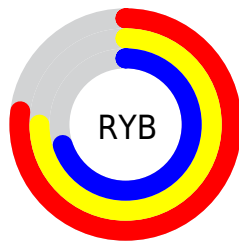
Distribution



Red (77%)

Green (73%)

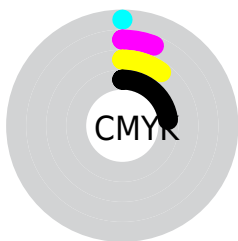
Blue (70%)



Red (77%)

Yellow (75%)

Blue (70%)

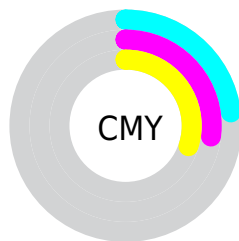


Cyan (0%)

Magenta (6%)

Yellow (10%)

Black (23%)



Cyan (23%)

Magenta (27%)

Yellow (30%)

Brightness & Saturation Gradients

These gradients show how the XYZ color 48.6207, 50.2025, 49.2469 changes by changing the brightness by 10 percent. The first figure shows a shift by +10% for each color and the second figure -10%.

Similar to the brightness gradients but the following saturation gradients show a change of the XYZ color 48.6207, 50.2025, 49.2469 by changing the saturation by 10% instead.

■ 48.6207, 50.2025,
49.2469

■ 48.6207, 50.2025,
49.2469

371.7890,
387.4573, 400.3639

■ 34.5320, 35.5743,
34.4484

■ 87.3320, 90.4748,
90.4428

■ 23.4674, 24.1056,
22.9581

112.6852,
116.8878, 117.6773

■ 15.0616, 15.4120,
14.3576

142.5240,
147.9978, 149.8942

■ 8.9492, 9.1090,
8.2282

177.2138,
184.1892, 187.5121

■ 4.7649, 4.8124,
4.1515

217.1198,
225.8465, 230.9495

■ 2.1433, 2.1376,
1.7088

262.6074,

■ 0.7126, 0.6856,

273.3540, 280.6248

0.3667

314.0420,
327.0962, 336.9568

■ 0.0000, 0.0000,
0.0000

■ 48.6207, 50.2025,
49.2469

■ 48.6207, 50.2025,
49.2469

■ 44.4766, 44.8553,
38.7976

■ 53.2434, 56.0511,
61.2584

■ 40.7904, 39.9892,
29.8424

■ 58.3560, 62.4076,
74.8899

■ 37.5460, 35.5919,
22.3127

■ 63.9750, 69.2868,
90.2004

■ 34.7245, 31.6484,
16.1334

■ 69.8230, 76.5842,
105.7099

■ 32.3058, 28.1424,
11.2224

■ 73.1300, 83.1982,
106.8122

■ 30.2676, 25.0568,
7.4886

■ 76.6489, 90.2360,
107.9852

■ 28.5851, 22.3729,
4.8283

■ 76.8361, 90.6104,
108.0476

■ 27.2298, 20.0699,
3.1194

■ 26.1534, 18.1189,
2.1390

Harmonies

Analogous

The Analogous color harmony consists of three colors that are next to each other on the color wheel.



49.4947, 50.2025, 51.1728



48.6207, 50.2025, 49.2469



47.5164, 50.2025, 48.7481

Triad

The Triadic color harmony groups three colors that are evenly spaced from another and form a triangle on the color wheel.



48.6207, 50.2025, 49.2469



45.6037, 50.2025, 55.2363



48.9720, 50.2025, 59.8501

Complementary

The Complementary color scheme is a pair of colors which are on the opposite of each other on the color wheel.



48.6207, 50.2025, 49.2469



46.6355, 49.8903, 59.9955

Split Complementary

Split-complementary colors differ from the complementary color scheme. The scheme consists of three colors, the original color and two neighbors of the complement color.



47.9161, 50.2025, 61.0359



48.6207, 50.2025, 49.2469



45.9804, 50.2025, 58.3063

Square

The Square scheme is like the rectangle color scheme, but the four colors are evenly spaced on the color wheel.



48.6207, 50.2025, 49.2469



45.7857, 50.2025, 52.1273



46.8225, 50.2025, 60.4602



49.6998, 50.2025, 57.2775

Rectangle

The Rectangle color scheme consists of four colors that form a rectangle on the color wheel.



48.6207, 50.2025, 49.2469



46.8007, 50.2025, 49.2744



46.8225, 50.2025, 60.4602



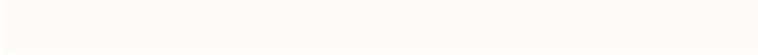
48.6431, 50.2025, 60.4286

Sweetspot

The Sweet Spot groups the original color and five complimentary colors.



48.6221, 50.2047, 49.2480



92.4464, 96.7247, 102.0764



48.1412, 47.3895, 54.8018



19.6413, 20.5187, 21.4679



0.0000, 0.0000, 0.0000



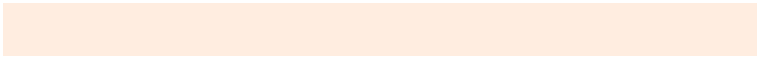
20.3446, 21.4041, 23.3091

Same Dimension

The Same Dimension uses a secret algorithm to generate beautiful new colors.



48.6221, 50.2047, 49.2480



85.1173, 87.4003, 83.1896



50.6709, 54.3023, 49.9309



10.9949, 11.3590, 11.1758



17.2580, 12.0332, 1.4130



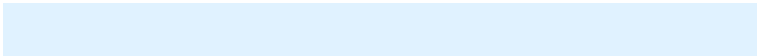
0.8885, 0.7124, 0.0907

Inverse Universe

The Inverse Universe completely reimagines the original color for something new.



46.6355, 49.8903, 59.9955



80.6993, 86.7007, 107.0893



44.6760, 45.9714, 59.3424



10.5579, 11.2898, 13.5402



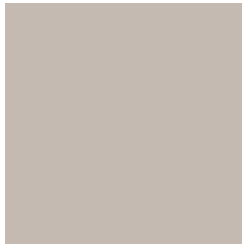
10.6717, 10.7373, 36.2544



0.5759, 0.6495, 1.7402

Previews

White Background



This preview shows how the XYZ color 48.6207, 50.2025, 49.2469 looks on a white background.

Color Contrast Check

Large Text (above 18pt) WCAG AA × Fail

Any Text WCAG AA × Fail

Large Text (above 18pt) WCAG AAA × Fail

Any Text WCAG AAA × Fail

Black Background



This preview shows how the XYZ color 48.6207, 50.2025, 49.2469 looks on a black background.

Color Contrast Check

Large Text (above 18pt) WCAG AA ✓ Pass

Any Text WCAG AA ✓ Pass

Large Text (above 18pt) WCAG AAA ✓ Pass

Any Text WCAG AAA ✓ Pass

If you want to check with other color combinations, try the [Color Contrast Checker](#).

XYZ 48.6207, 50.2025, 49.2469

Background



This preview shows how black text looks on a background with the XYZ color 48.6207, 50.2025, 49.2469.

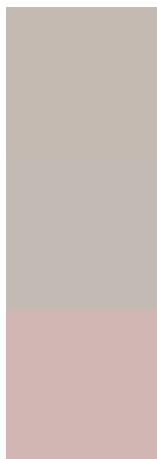


This preview shows how white text looks on a background with the XYZ color 48.6207, 50.2025,

Color Blindness Simulation

Color vision deficiency is a very complex topic, and I could not describe the different causes any better than Wikipedia does, so if you want to learn more, you should check out their [article about color blindness](#).

Dichromacy



Original Color

48.6207, 50.2025, 49.2469

Protanopia

47.8993, 50.1328, 49.7999

Deuteranopia

51.1591, 50.2659, 49.6537



Tritanopia

50.8309, 50.1776, 59.8295

Trichromacy



Original Color

48.6207, 50.2025, 49.2469

Protanomaly

48.1551, 50.2647, 49.8118

Deuteranomaly

50.2470, 50.1008, 49.6699

Tritanomaly

49.9879, 50.1408, 55.7587

Monochromacy



Original Color

48.6207, 50.2025, 49.2469

Achromatopsia

47.7994, 50.2886, 54.7643

Achromatomaly

47.9079, 50.0777, 52.4883

CSS Examples

Text

The CSS property to change the color of the text to XYZ 48.6207, 50.2025, 49.2469 is called "color". The color property can be set on classes, ids or directly on the HTML element.

This example shows how text in the color `rgb(197, 186, 178)` looks like.

```
.text, #text, p{  
    color:rgb(197, 186, 178)  
}
```

If you want to add a text shadow in that color use the text-shadow property, you can generate a text shadow directly with our [CSS Text Shadow Generator](#).

Here you see how black text with a 4 pixel rgb(197, 186, 178) colored shadow looks like.

```
.shadow{ text-shadow: 4px 4px 2px rgb(197, 186, 178) }
```

Border

The CSS property to change the border of an element to XYZ 48.6207, 50.2025, 49.2469 is called "border". The border property can be set on classes, ids or directly on the HTML element.

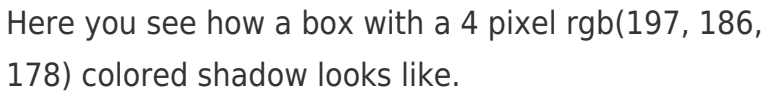
This example shows the color as border, it can be applied via the CSS property "border" or "border-color".

```
.border, #border, table{ border:4px solid rgb(197, 186, 178) }
```


If only the border color should be changed use the property border-color.

```
.border{ border-color:rgb(197, 186, 178) }
```

If you want to add a box shadow in that color use:



Here you see how a box with a 4 pixel rgb(197, 186, 178) colored shadow looks like.

```
.boxshadow{ -moz-box-shadow:4px 4px 4px  
4px rgb(197, 186, 178); -webkit-box-  
shadow:4px 4px 4px 4px rgb(197, 186, 178);  
box-shadow:4px 4px 4px 4px rgb(197, 186,  
178) }
```

Background

The CSS property to change the background color of an element to XYZ 48.6207, 50.2025, 49.2469 is called "background". The background property can be set on classes, ids or directly on the HTML element.

```
.background, #background, body{  
background: rgb(197, 186, 178) }
```

If only the background color should be changed can be used:

```
.background{ background-color: rgb(197,  
186, 178) }
```

This example shows the color as background, it is applied via the CSS property "background".

To optimize and compress your CSS code, you can use our [online CSS compressor and optimizer](#) based on csstidy. If you want to create a linear or radial gradient as background or border, check our [CSS Gradient Generator](#).

Hey! You found this booklet interesting? Support Converting Colors with the new Membership Option!

The pro membership hides all ads, plus gives you double the colors in the color bucket, and more awesome pro features!

[Learn more, Memberships starting at \\$2.50/m!](#)

**Follow me
on Twitter!**

@ConvertingColor