

Converting Colors

XYZ(48.7725, 46.9949, 46.3115)

Have a look what the booklet for
XYZ(48.7725, 46.9949, 46.3115)
contains.

XYZ(48.7021, 46.9813, 46.5458)	3
<i>Conversions</i>	4
<i>Details</i>	6
<i>Harmonies</i>	12
<i>Previews</i>	24
<i>Color Blindness Simulation</i>	28
<i>CSS Examples</i>	31

Color

**XYZ(48.7021, 46.9813,
46.5458)**

Conversions

Conversions Part 1

Format	Color
Hex	CFAFAE
RGB	207, 175, 174
RGB Percent	81%, 69%, 68%
CMY	0.1882, 0.3137, 0.3176
CMYK	0.00, 0.15, 0.16, 0.19
HSL	2°, 26%, 75%
HSV	2°, 16%, 81%
XYZ	48.7021, 46.9813, 46.5458
YIQ	184.4540, 19.3930, 6.4730

Conversions

Conversions Part 2

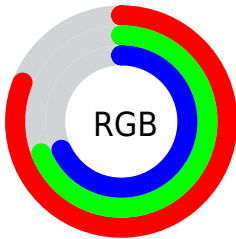
Format	Color
RYB	207, 175, 174
Decimal	13610926
CIELab	74.18, 11.41, 4.82
CIELCh	74, 12.382, 22.894
Yxy	46.9813, 0.3424, 0.3303
Android (android.graphics.Color)	4291801006 (0xFFCF8FAE)
YUV	184.4540, -5.1538, 19.7728
Hunter-Lab	68.5429, 6.8803, 7.7177

Details

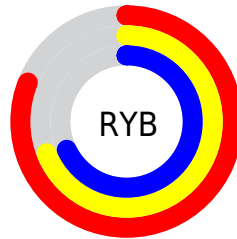
The XYZ color **48.7021, 46.9813, 46.5458** is a light color, and the websafe version is hex **CC9999**. A complement of this color would be **50.7891, 57.6451, 67.4818**, and the grayscale version is **45.8322, 48.2191, 52.5106**.

A 20% lighter version of the original color is **83.9588, 84.0690, 85.9306**, and **23.5447, 22.2465, 21.4654** is the 20% darker color. If you saturate the color by 10%, you get **43.2175, 38.9962, 35.5168**, and if you desaturate by 10%, it is **55.0810, 56.2562, 59.4083**.

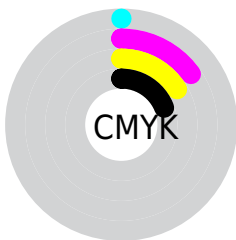
Distribution



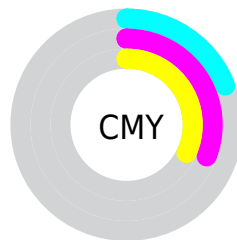
- Red (81%)
- Green (69%)
- Blue (68%)



- Red (81%)
- Yellow (69%)
- Blue (68%)



- Cyan (0%)
- Magenta (15%)
- Yellow (16%)
- Black (19%)





- Cyan (19%)
- Magenta (31%)
- Yellow (32%)

Brightness & Saturation Gradients

These gradients show how the XYZ color 48.7021, 46.9813, 46.5458 changes by changing the brightness by 10 percent. The first figure shows a shift by +10% for each color and the second figure -10%.


Similar to the brightness gradients but the following saturation gradients show a change of the XYZ color 48.7021, 46.9813, 46.5458 by changing the saturation by 10% instead.


 48.7021, 46.9813,
46.5458

 48.7021, 46.9813,
46.5458


372.1048,
374.7399, 389.3398

 34.5968, 33.0209,
32.3250

 87.4522, 85.6857,
86.3781

 23.5175, 22.1424,
21.3430


112.8278,
111.1985, 112.8267

 15.0989, 13.9616,
13.1812


142.6907,
141.3308, 144.1882

 8.9756, 8.0940,
7.4213

177.4065,
176.4671, 180.8813

 4.7822, 4.1551,
3.6445

217.3405,
216.9918, 223.3245

 2.1535, 1.7607,
1.4324

262.8579,

 0.7181, 0.4625,

263.2892, 271.9362

0.1668

314.3243,
315.7438, 327.1352

■ 0.0000, 0.0000,
0.0000

■ 48.7021, 46.9813,
46.5458

■ 48.7021, 46.9813,
46.5458

■ 43.2175, 38.9962,
35.5168

■ 55.0810, 56.2562,
59.4083

■ 38.5835, 32.2380,
26.2350

■ 62.3874, 66.8677,
74.1793

■ 34.7587, 26.6476,
18.6118

■ 70.6578, 78.8682,
90.9332

■ 31.6967, 22.1589,
12.5495

■ 79.5424, 92.0055,
108.1743

■ 29.3463, 18.6992,
7.9402

■ 27.6502, 16.1869,
4.6622

■ 26.5421, 14.5282,
2.5742

■ 25.9414, 13.6100,
1.5010

■ 25.8007, 13.4022,
1.2270

Harmonies

Analogous

The Analogous color harmony consists of three colors that are next to each other on the color wheel.



49.0243, 46.9813, 52.6814



48.7021, 46.9813, 46.5458



47.2786, 46.9813, 42.0135

Triad

The Triadic color harmony groups three colors that are evenly spaced from another and form a triangle on the color wheel.



48.7021, 46.9813, 46.5458



41.3366, 46.9813, 44.1300



44.1285, 46.9813, 64.2661

Complementary

The Complementary color scheme is a pair of colors which are on the opposite of each other on the color wheel.



48.7021, 46.9813, 46.5458



50.7891, 57.6451, 67.4818

Split Complementary

Split-complementary colors differ from the complementary color scheme. The scheme consists of three colors, the original color and two neighbors of the complement color.



42.1290, 46.9813, 61.5339



48.7021, 46.9813, 46.5458



40.5521, 46.9813, 49.6577

Square

The Square scheme is like the rectangle color scheme, but the four colors are evenly spaced on the color wheel.



48.7021, 46.9813, 46.5458



43.0146, 46.9813, 40.7015



40.8373, 46.9813, 56.0581



46.3352, 46.9813, 63.2598

Rectangle

The Rectangle color scheme consists of four colors that form a rectangle on the color wheel.



48.7021, 46.9813, 46.5458



45.9213, 46.9813, 40.3402



40.8373, 46.9813, 56.0581



43.4108, 46.9813, 63.7474

Sweetspot

The Sweet Spot groups the original color and five complimentary colors.



48.7034, 46.9834, 46.5468



89.2469, 91.5704, 97.1724



52.0641, 48.0163, 65.2041



18.9345, 19.3558, 20.4597



0.0000, 0.0000, 0.0000



20.3446, 21.4041, 23.3091

Same Dimension

The Same Dimension uses a secret algorithm to generate beautiful new colors.



48.7034, 46.9834, 46.5468



75.0092, 70.8663, 68.4686



52.0144, 53.6054, 47.6505



11.8372, 11.8650, 12.2783



16.2680, 8.4689, 0.7772



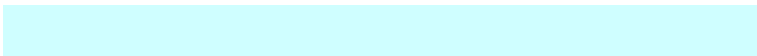
0.9200, 0.4943, 0.0469

Inverse Universe

The Inverse Universe completely reimagines the original color for something new.



50.7891, 57.6451, 67.4818



78.9483, 91.0041, 108.0123



47.1213, 50.3096, 66.2592



12.1263, 13.3428, 15.1800



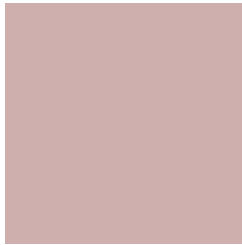
20.2253, 29.0972, 41.7428



1.1408, 1.6467, 2.3373

Previews

White Background



This preview shows how the XYZ color 48.7021, 46.9813, 46.5458 looks on a white background.

Color Contrast Check

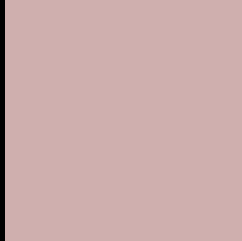
Large Text (above 18pt) WCAG AA × Fail

Any Text WCAG AA × Fail

Large Text (above 18pt) WCAG AAA × Fail

Any Text WCAG AAA × Fail

Black Background



This preview shows how the XYZ color 48.7021, 46.9813, 46.5458 looks on a black background.

Color Contrast Check

Large Text (above 18pt) WCAG AA ✓ Pass

Any Text WCAG AA ✓ Pass

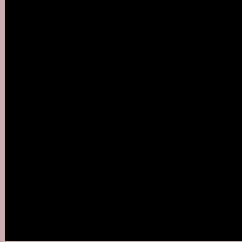
Large Text (above 18pt) WCAG AAA ✓ Pass

Any Text WCAG AAA ✓ Pass

If you want to check with other color combinations, try the [Color Contrast Checker](#).

XYZ 48.7021, 46.9813, 46.5458

Background



This preview shows how black text looks on a background with the XYZ color 48.7021, 46.9813, 46.5458.



This preview shows how white text looks on a background with the XYZ color 48.7021, 46.9813,

Color Blindness Simulation

Color vision deficiency is a very complex topic, and I could not describe the different causes any better than Wikipedia does, so if you want to learn more, you should check out their [article about color blindness](#).

Dichromacy



Original Color

48.7021, 46.9813, 46.5458

Protanopia

45.2573, 47.2350, 48.8514

Deuteranopia

47.7939, 46.8032, 46.5593



Tritanopia

50.2077, 47.0303, 53.4452

Trichromacy



Original Color

48.7021, 46.9813, 46.5458

Protanomaly

46.3040, 46.8839, 48.2040

Deuteranomaly

48.0672, 46.9440, 46.5721

Tritanomaly

49.5920, 47.0594, 50.7256

Monochromacy



Original Color

48.7021, 46.9813, 46.5458

Achromatopsia

45.5594, 47.9320, 52.1980

Achromatomaly

46.5003, 47.5495, 49.9072

CSS Examples

Text

The CSS property to change the color of the text to XYZ 48.7021, 46.9813, 46.5458 is called "color". The color property can be set on classes, ids or directly on the HTML element.

This example shows how text in the color `rgb(207, 175, 174)` looks like.

```
.text, #text, p{  
    color:rgb(207, 175, 174)  
}
```

If you want to add a text shadow in that color use the text-shadow property, you can generate a text shadow directly with our [CSS Text Shadow Generator](#).

Here you see how black text with a 4 pixel rgb(207, 175, 174) colored shadow looks like.

```
.shadow{ text-shadow: 4px 4px 2px rgb(207, 175, 174) }
```

Border

The CSS property to change the border of an element to XYZ 48.7021, 46.9813, 46.5458 is called "border". The border property can be set on classes, ids or directly on the HTML element.

This example shows the color as border, it can be applied via the CSS property "border" or "border-color".

```
.border, #border, table{ border:4px solid rgb(207, 175, 174) }
```


If only the border color should be changed use the property `border-color`.

```
.border{ border-color:rgb(207, 175, 174) }
```

If you want to add a box shadow in that color use:

Here you see how a box with a 4 pixel `rgb(207, 175, 174)` colored shadow looks like.

```
.boxshadow{ -moz-box-shadow:4px 4px 4px  
4px rgb(207, 175, 174); -webkit-box-  
shadow:4px 4px 4px 4px rgb(207, 175, 174);  
box-shadow:4px 4px 4px 4px rgb(207, 175,  
174) }
```

Background

The CSS property to change the background color of an element to XYZ 48.7021, 46.9813, 46.5458 is called "background". The background property can be set on classes, ids or directly on the HTML element.

```
.background, #background, body{  
background: rgb(207, 175, 174) }
```

If only the background color should be changed can be used:

```
.background{ background-color: rgb(207,  
175, 174) }
```

This example shows the color as background, it is applied via the CSS property "background".

To optimize and compress your CSS code, you can use our [online CSS compressor and optimizer](#) based on csstidy. If you want to create a linear or radial gradient as background or border, check our [CSS Gradient Generator](#).

Hey! You found this booklet interesting? Support Converting Colors with the new Membership Option!

The pro membership hides all ads, plus gives you double the colors in the color bucket, and more awesome pro features!

[Learn more, Memberships starting at \\$2.50/m!](#)

**Follow me
on Twitter!**

@ConvertingColor