

Converting Colors

XYZ(48.8118, 49.7845, 37.1283)

Have a look what the booklet for
XYZ(48.8118, 49.7845, 37.1283)
contains.

XYZ(48.6957, 49.5768, 37.1397)	3
<i>Conversions</i>	4
<i>Details</i>	6
<i>Harmonies</i>	12
<i>Previews</i>	24
<i>Color Blindness Simulation</i>	28
<i>CSS Examples</i>	31

Color

**XYZ(48.6957, 49.5768,
37.1397)**

Conversions

Conversions Part 1

Format	Color
Hex	D0B799
RGB	208, 183, 153
RGB Percent	82%, 72%, 60%
CMY	0.1843, 0.2823, 0.4000
CMYK	0.00, 0.12, 0.26, 0.18
HSL	33°, 37%, 71%
HSV	33°, 26%, 82%
XYZ	48.6957, 49.5768, 37.1397
YIQ	187.0550, 24.5300, -4.0300

Conversions

Conversions Part 2

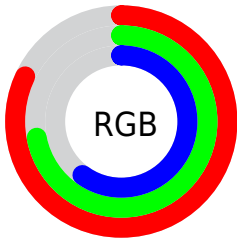
Format	Color
R _Y B	199, 208, 153
Decimal	13678489
CIE Lab	75.81, 4.36, 18.55
CIE LCh	76, 19.056, 76.776
Yxy	49.5768, 0.3596, 0.3661
Android (android.graphics.Color)	4291868569 (0xFFD0B799)
YUV	187.0550, -16.7891, 18.3688
Hunter-Lab	70.4108, 0.2307, 18.0138

Details

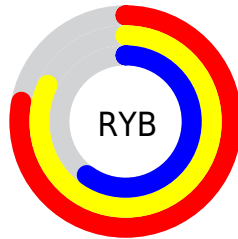
The XYZ color **48.6957, 49.5768, 37.1397** is a light color, and the websafe version is hex **CCCC99**. A complement of this color would be **40.4421, 43.1660, 65.8751**, and the grayscale version is **47.3483, 49.8141, 54.2475**.

A 20% lighter version of the original color is **83.3690, 87.4980, 71.5263**, and **23.5178, 23.6969, 15.9048** is the 20% darker color. If you saturate the color by 10%, you get **45.2409, 45.1808, 28.2385**, and if you desaturate by 10%, it is **52.5836, 54.3590, 47.6639**.

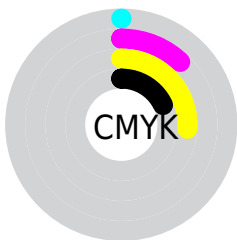
Distribution



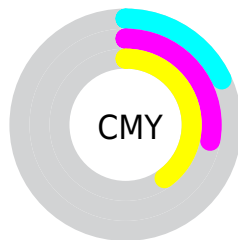
- Red (82%)
- Green (72%)
- Blue (60%)



- Red (78%)
- Yellow (82%)
- Blue (60%)



- Cyan (0%)
- Magenta (12%)
- Yellow (26%)
- Black (18%)



- Cyan (18%)
- Magenta (28%)
- Yellow (40%)

Brightness & Saturation Gradients

These gradients show how the XYZ color 48.6957, 49.5768, 37.1397 changes by changing the brightness by 10 percent. The first figure shows a shift by +10% for each color and the second figure -10%.

Similar to the brightness gradients but the following saturation gradients show a change of the XYZ color 48.6957, 49.5768, 37.1397 by changing the saturation by 10% instead.

■ 48.6957, 49.5768,
37.1397

■ 48.6957, 49.5768,
37.1397

372.0800,
385.0087, 349.1018

■ 34.5917, 35.0773,
25.0190

■ 87.4428, 89.5475,
71.9763

■ 23.5136, 23.7224,
15.8721

■ 112.8166,
115.7875, 95.5294

■ 15.0959, 15.1278,
9.2803

142.6776,
146.7097, 123.7303

■ 8.9735, 8.9091,
4.8252

177.3914,
182.6986, 156.9976

■ 4.7809, 4.6820,
2.0881

217.3231,
224.1386, 195.7499

■ 2.1527, 2.0619,
0.6087

262.8382,

■ 0.7176, 0.6431,

271.4140, 240.4056

0.0000

314.3021,
324.9092, 291.3835

■ 0.0000, 0.0000,
0.0000

■ 48.6957, 49.5768,
37.1397

■ 48.6957, 49.5768,
37.1397

■ 45.2409, 45.1808,
28.2385

■ 52.5836, 54.3590,
47.6639

■ 42.1972, 41.1531,
20.8744

■ 56.9175, 59.5314,
59.8847

■ 39.5463, 37.4836,
14.9584

■ 61.7147, 65.1065,
73.8750

■ 37.2668, 34.1597,
10.3908

■ 66.9903, 71.0941,
89.7023

■ 35.3346, 31.1671,
7.0594

■ 72.4345, 77.3738,
105.7247

■ 33.7223, 28.4902,
4.8331

■ 75.1410, 82.7870,
106.6269

■ 32.3952, 26.1103,
3.5449

■ 77.9925, 88.4899,
107.5774

■ 31.9704, 25.3257,
3.2033

■ 79.8225, 92.1500,
108.1874

Harmonies

Analogous

The Analogous color harmony consists of three colors that are next to each other on the color wheel.



51.9386, 49.5768, 40.9847



48.6957, 49.5768, 37.1397



45.1837, 49.5768, 37.3839

Triad

The Triadic color harmony groups three colors that are evenly spaced from another and form a triangle on the color wheel.



48.6957, 49.5768, 37.1397



40.8997, 49.5768, 59.8053



52.2576, 49.5768, 68.4631

Complementary

The Complementary color scheme is a pair of colors which are on the opposite of each other on the color wheel.



48.6957, 49.5768, 37.1397



40.4421, 43.1660, 65.8751

Split Complementary

Split-complementary colors differ from the complementary color scheme. The scheme consists of three colors, the original color and two neighbors of the complement color.



49.1134, 49.5768, 74.8802



48.6957, 49.5768, 37.1397



42.6114, 49.5768, 69.4690

Square

The Square scheme is like the rectangle color scheme, but the four colors are evenly spaced on the color wheel.



48.6957, 49.5768, 37.1397



40.8004, 49.5768, 49.6426



45.5811, 49.5768, 75.2699



54.0634, 49.5768, 58.5644

Rectangle

The Rectangle color scheme consists of four colors that form a rectangle on the color wheel.



48.6957, 49.5768, 37.1397



43.1623, 49.5768, 39.8227



45.5811, 49.5768, 75.2699



51.3152, 49.5768, 71.1502

Sweetspot

The Sweet Spot groups the original color and five complimentary colors.



48.6970, 49.5791, 37.1407



89.0510, 92.9818, 91.5484



45.5071, 39.4341, 47.6849



18.8306, 19.6294, 18.9407



0.0000, 0.0000, 0.0000



20.3446, 21.4041, 23.3091

Same Dimension

The Same Dimension uses a secret algorithm to generate beautiful new colors.



48.6970, 49.5791, 37.1407



73.8711, 74.3917, 50.2040



53.8059, 60.5576, 38.9905



12.3355, 12.8617, 12.4444



20.0234, 15.9798, 2.0291



1.1984, 1.0510, 0.1397

Inverse Universe

The Inverse Universe completely reimagines the original color for something new.



40.4421, 43.1660, 65.8751



58.5385, 62.4826, 103.5828



36.2626, 34.2893, 64.3820



11.5999, 12.2900, 15.0045



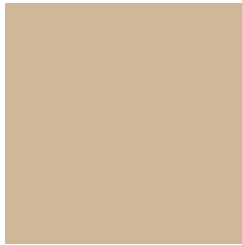
9.7140, 8.0745, 38.2390



0.6220, 0.6091, 2.1644

Previews

White Background



This preview shows how the XYZ color 48.6957, 49.5768, 37.1397 looks on a white background.

Color Contrast Check

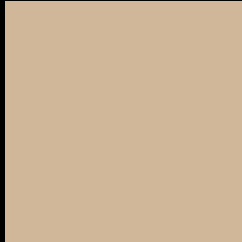
Large Text (above 18pt) WCAG AA × Fail

Any Text WCAG AA × Fail

Large Text (above 18pt) WCAG AAA × Fail

Any Text WCAG AAA × Fail

Black Background



This preview shows how the XYZ color 48.6957, 49.5768, 37.1397 looks on a black background.

Color Contrast Check

Large Text (above 18pt) WCAG AA ✓ Pass

Any Text WCAG AA ✓ Pass

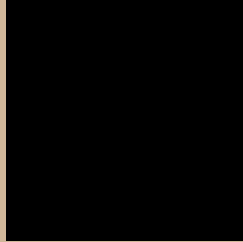
Large Text (above 18pt) WCAG AAA ✓ Pass

Any Text WCAG AAA ✓ Pass

If you want to check with other color combinations, try the [Color Contrast Checker](#).

XYZ 48.6957, 49.5768, 37.1397

Background



This preview shows how black text looks on a background with the XYZ color 48.6957, 49.5768, 37.1397.



This preview shows how white text looks on a background with the XYZ color 48.6957, 49.5768,

Color Blindness Simulation

Color vision deficiency is a very complex topic, and I could not describe the different causes any better than Wikipedia does, so if you want to learn more, you should check out their [article about color blindness](#).

Dichromacy



Original Color

48.6957, 49.5768, 37.1397

Protanopia

46.9754, 49.9130, 38.1686

Deuteranopia

50.7693, 49.7273, 37.4944



Tritanopia

52.7649, 49.7485, 56.1116

Trichromacy



Original Color

48.6957, 49.5768, 37.1397

Protanomaly

47.7488, 50.0075, 37.7076

Deuteranomaly

50.0882, 49.6770, 37.5205

Tritanomaly

51.1210, 49.6657, 48.4870

Monochromacy



Original Color

48.6957, 49.5768, 37.1397

Achromatopsia

47.2335, 49.6933, 54.1160

Achromatomaly

47.8024, 49.8151, 47.6532

CSS Examples

Text

The CSS property to change the color of the text to XYZ 48.6957, 49.5768, 37.1397 is called "color". The color property can be set on classes, ids or directly on the HTML element.

This example shows how text in the color `rgb(208, 183, 153)` looks like.

```
.text, #text, p{  
    color:rgb(208, 183, 153)  
}
```

If you want to add a text shadow in that color use the text-shadow property, you can generate a text shadow directly with our [CSS Text Shadow Generator](#).

Here you see how black text with a 4 pixel rgb(208, 183, 153) colored shadow looks like.

```
.shadow{ text-shadow: 4px 4px 2px rgb(208, 183, 153) }
```

Border

The CSS property to change the border of an element to XYZ 48.6957, 49.5768, 37.1397 is called "border". The border property can be set on classes, ids or directly on the HTML element.

This example shows the color as border, it can be applied via the CSS property "border" or "border-color".

```
.border, #border, table{ border:4px solid rgb(208, 183, 153) }
```


If only the border color should be changed use the property `border-color`.

```
.border{ border-color:rgb(208, 183, 153) }
```

If you want to add a box shadow in that color use:

Here you see how a box with a 4 pixel `rgb(208, 183, 153)` colored shadow looks like.

```
.boxshadow{ -moz-box-shadow:4px 4px 4px  
4px rgb(208, 183, 153); -webkit-box-  
shadow:4px 4px 4px 4px rgb(208, 183, 153);  
box-shadow:4px 4px 4px 4px rgb(208, 183,  
153) }
```

Background

The CSS property to change the background color of an element to XYZ 48.6957, 49.5768, 37.1397 is called "background". The background property can be set on classes, ids or directly on the HTML element.

```
.background, #background, body{  
background: rgb(208, 183, 153) }
```

If only the background color should be changed can be used:

```
.background{ background-color: rgb(208,  
183, 153) }
```

This example shows the color as background, it is applied via the CSS property "background".

To optimize and compress your CSS code, you can use our [online CSS compressor and optimizer](#) based on csstidy. If you want to create a linear or radial gradient as background or border, check our [CSS Gradient Generator](#).

Hey! You found this booklet interesting? Support Converting Colors with the new Membership Option!

The pro membership hides all ads, plus gives you double the colors in the color bucket, and more awesome pro features!

[Learn more, Memberships starting at \\$2.50/m!](#)

**Follow me
on Twitter!**

@ConvertingColor