

# Converting Colors

XYZ(48.8293, 46.8974, 37.7881)

Have a look what the booklet for  
XYZ(48.8293, 46.8974, 37.7881)  
contains.

<b>XYZ(48.8684, 46.9685, 37.9427)</b> .....	3
<b><i>Conversions</i></b> .....	4
<b><i>Details</i></b> .....	6
<b><i>Harmonies</i></b> .....	12
<b><i>Previews</i></b> .....	24
<b><i>Color Blindness Simulation</i></b> .....	28
<b><i>CSS Examples</i></b> .....	31

# Color

**XYZ(48.8684, 46.9685,  
37.9427)**

# Conversions

## Conversions Part 1

Format	Color
Hex	D6AE9C
RGB	214, 174, 156
RGB Percent	84%, 68%, 61%
CMY	0.1608, 0.3176, 0.3882
CMYK	0.00, 0.19, 0.27, 0.16
HSL	19°, 41%, 73%
HSV	19°, 27%, 84%
XYZ	48.8684, 46.9685, 37.9427
YIQ	183.9080, 29.6180, 2.8820

# Conversions

## Conversions Part 2

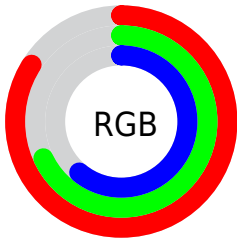
<b>Format</b>	<b>Color</b>
R <sub>Y</sub> B	214, 182, 156
Decimal	14069404
CIE Lab	74.17, 11.90, 14.72
CIE LCh	74, 18.930, 51.062
Yxy	46.9685, 0.3653, 0.3511
Android (android.graphics.Color)	4292259484 (0xFFD6AE9C)
YUV	183.9080, -13.7586, 26.3907
Hunter-Lab	68.5336, 7.3471, 15.1484

# Details

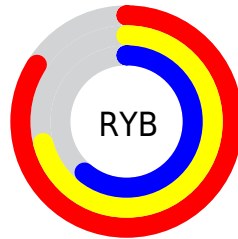
The XYZ color **48.8684, 46.9685, 37.9427** is a light color, and the websafe version is hex **CC9999**. A complement of this color would be **45.5875, 51.4016, 71.1375**, and the grayscale version is **45.5723, 47.9456, 52.2127**.

A 20% lighter version of the original color is **81.2947, 82.5568, 73.2784**, and **23.6099, 22.2081, 16.4068** is the 20% darker color. If you saturate the color by 10%, you get **44.5177, 40.9159, 28.3260**, and if you desaturate by 10%, it is **53.8541, 53.7796, 49.3472**.

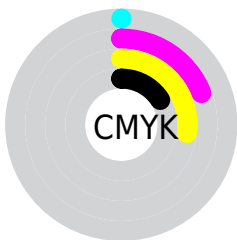
# Distribution



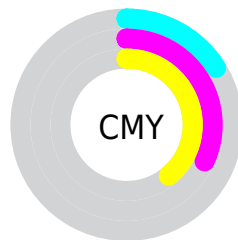
- Red (84%)
- Green (68%)
- Blue (61%)



- Red (84%)
- Yellow (71%)
- Blue (61%)



- Cyan (0%)
- Magenta (19%)
- Yellow (27%)
- Black (16%)




- Cyan (16%)
- Magenta (32%)
- Yellow (39%)


# Brightness & Saturation Gradients

These gradients show how the XYZ color 48.8684, 46.9685, 37.9427 changes by changing the brightness by 10 percent. The first figure shows a shift by +10% for each color and the second figure -10%.


Similar to the brightness gradients but the following saturation gradients show a change of the XYZ color 48.8684, 46.9685, 37.9427 by changing the saturation by 10% instead.





 48.8684, 46.9685,  
37.9427


 48.8684, 46.9685,  
37.9427


372.7496,  
374.6888, 352.6649

 34.7292, 33.0108,  
25.6367


 87.6979, 85.6666,  
73.2228

 23.6199, 22.1347,  
16.3288


 113.1188,  
111.1757, 97.0339

 15.1751, 13.9559,  
9.6002

143.0311,  
141.3041, 125.5172

 9.0295, 8.0900,  
5.0326

177.8001,  
176.4362, 159.0912

 4.8177, 4.1526,  
2.2073

217.7910,  
216.9563, 198.1745

 2.1743, 1.7593,  
0.6786

263.3694,

 0.7292, 0.4616,

263.2488, 243.1855

0.0000

314.9004,  
315.6982, 294.5428

■ 0.0000, 0.0000,  
0.0000

■ 48.8684, 46.9685,  
37.9427

■ 48.8684, 46.9685,  
37.9427

■ 44.5177, 40.9159,  
28.3260

■ 53.8541, 53.7796,  
49.3472

■ 40.7715, 35.5885,  
20.4027

■ 59.4963, 61.3682,  
62.6216

■ 37.6020, 30.9599,  
14.0737

■ 65.8199, 69.7607,  
77.8463

■ 34.9780, 26.9996,  
9.2289

■ 72.8475, 78.9802,  
95.0963

■ 32.8643, 23.6744,  
5.7433

■ 79.2849, 88.5227,  
107.5156

■ 31.2216, 20.9481,  
3.4716

■ 81.5417, 93.0362,  
108.2678

■ 30.0002, 18.7788,  
2.2216

■ 29.7051, 18.2429,  
1.9556

# Harmonies

## Analogous

The Analogous color harmony consists of three colors that are next to each other on the color wheel.



51.0101, 46.9685, 44.7165



48.8684, 46.9685, 37.9427



45.6632, 46.9685, 34.8171

# Triad

The Triadic color harmony groups three colors that are evenly spaced from another and form a triangle on the color wheel.



48.8684, 46.9685, 37.9427



38.5035, 46.9685, 48.2930



47.0277, 46.9685, 70.6297

# Complementary

The Complementary color scheme is a pair of colors which are on the opposite of each other on the color wheel.



48.8684, 46.9685, 37.9427



45.5875, 51.4016, 71.1375

# Split Complementary

Split-complementary colors differ from the complementary color scheme. The scheme consists of three colors, the original color and two neighbors of the complement color.



43.6364, 46.9685, 71.9038



48.8684, 46.9685, 37.9427



38.8275, 46.9685, 58.1525

# Square

The Square scheme is like the rectangle color scheme, but the four colors are evenly spaced on the color wheel.



48.8684, 46.9685, 37.9427



39.7582, 46.9685, 40.2756



40.6669, 46.9685, 67.0912



49.9105, 46.9685, 63.8027



# Rectangle

The Rectangle color scheme consists of four colors that form a rectangle on the color wheel.



48.8684, 46.9685, 37.9427



43.4022, 46.9685, 34.9103



40.6669, 46.9685, 67.0912



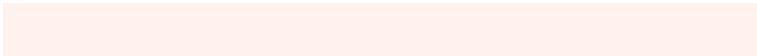
45.9055, 46.9685, 71.7530

# Sweetspot

The Sweet Spot groups the original color and five complimentary colors.



48.8696, 46.9707, 37.9437



87.6130, 90.1057, 91.0690



49.6528, 42.0866, 58.0904



18.4693, 18.9068, 18.8203



0.0000, 0.0000, 0.0000



20.3446, 21.4041, 23.3091



# Same Dimension

The Same Dimension uses a secret algorithm to generate beautiful new colors.



48.8696, 46.9707, 37.9437



68.5361, 64.1140, 47.2162



54.9473, 59.1260, 39.9695



12.7346, 13.0434, 13.0072



18.0366, 11.1904, 1.2093



1.1608, 0.8208, 0.0973

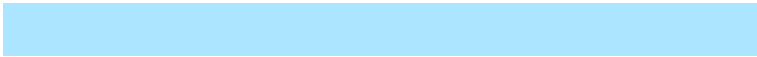


# Inverse Universe

The Inverse Universe completely reimagines the original color for something new.



45.5875, 51.4016, 71.1375



62.7977, 71.8326, 105.1630



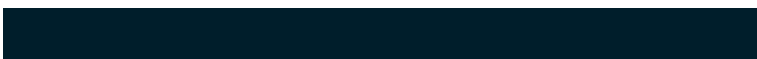
39.7774, 39.7814, 69.2008



12.4519, 13.4271, 15.8729



13.7932, 15.8481, 40.7852

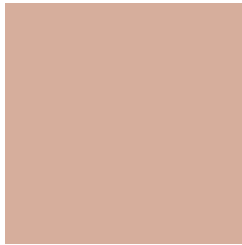


0.9041, 1.1002, 2.4840



# Previews

## White Background



This preview shows how the XYZ color 48.8684, 46.9685, 37.9427 looks on a white background.

## Color Contrast Check

Large Text (above 18pt) WCAG AA × Fail

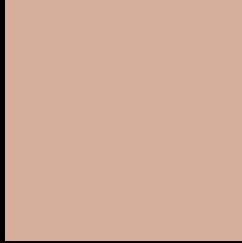
Any Text WCAG AA × Fail

Large Text (above 18pt) WCAG AAA × Fail

Any Text WCAG AAA × Fail



# Black Background



This preview shows how the XYZ color 48.8684, 46.9685, 37.9427 looks on a black background.

## Color Contrast Check

Large Text (above 18pt) WCAG AA ✓ Pass

Any Text WCAG AA ✓ Pass

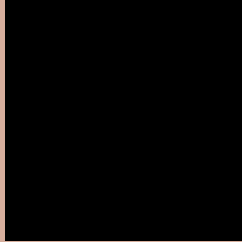
Large Text (above 18pt) WCAG AAA ✓ Pass

Any Text WCAG AAA ✓ Pass

If you want to check with other color combinations, try the [Color Contrast Checker](#).

**XYZ 48.8684, 46.9685, 37.9427**

## **Background**



This preview shows how black text looks on a background with the XYZ color 48.8684, 46.9685, 37.9427.



This preview shows how white text looks on a background with the XYZ color 48.8684, 46.9685,

37.9427.

# Color Blindness Simulation

Color vision deficiency is a very complex topic, and I could not describe the different causes any better than Wikipedia does, so if you want to learn more, you should check out their [article about color blindness](#).

## Dichromacy



### Original Color

48.8684, 46.9685, 37.9427

### Protanopia

44.5590, 47.0703, 39.9947

### Deuteranopia

48.1044, 47.1526, 38.0185



## Tritanopia

51.5372, 46.9201, 51.1399

# Trichromacy



## Original Color

48.8684, 46.9685, 37.9427

## Protanomaly

45.9313, 46.8855, 39.4299

## Deuteranomaly

48.1947, 46.9091, 37.9667

## Tritanomaly

50.4246, 46.7419, 45.8996

# Monochromacy



## Original Color

48.8684, 46.9685, 37.9427

## Achromatopsia

45.5594, 47.9320, 52.1980

## Achromatomaly

46.4669, 47.3006, 46.7253

# CSS Examples

## Text

The CSS property to change the color of the text to XYZ 48.8684, 46.9685, 37.9427 is called "color". The color property can be set on classes, ids or directly on the HTML element.

This example shows how text in the color rgb(214, 174, 156) looks like.

```
.text, #text, p{  
    color:rgb(214, 174, 156)  
}
```

If you want to add a text shadow in that color use the text-shadow property, you can generate a text shadow directly with our [CSS Text Shadow Generator](#).

Here you see how black text with a 4 pixel rgb(214, 174, 156) colored shadow looks like.

```
.shadow{ text-shadow: 4px 4px 2px rgb(214, 174, 156) }
```

## Border

The CSS property to change the border of an element to XYZ 48.8684, 46.9685, 37.9427 is called "border". The border property can be set on classes, ids or directly on the HTML element.

This example shows the color as border, it can be applied via the CSS property "border" or "border-color".

```
.border, #border, table{ border:4px solid rgb(214, 174, 156) }
```



If only the border color should be changed use the property `border-color`.

```
.border{ border-color:rgb(214, 174, 156) }
```

If you want to add a box shadow in that color use:

Here you see how a box with a 4 pixel `rgb(214, 174, 156)` colored shadow looks like.

```
.boxshadow{ -moz-box-shadow:4px 4px 4px  
4px rgb(214, 174, 156); -webkit-box-  
shadow:4px 4px 4px 4px rgb(214, 174, 156);  
box-shadow:4px 4px 4px 4px rgb(214, 174,  
156) }
```

# Background

The CSS property to change the background color of an element to XYZ 48.8684, 46.9685, 37.9427 is called "background". The background property can be set on classes, ids or directly on the HTML element.

```
.background, #background, body{  
background: rgb(214, 174, 156) }
```

If only the background color should be changed can be used:

```
.background{ background-color: rgb(214,  
174, 156) }
```

This example shows the color as background, it is applied via the CSS property "background".

To optimize and compress your CSS code, you can use our [online CSS compressor and optimizer](#) based on csstidy. If you want to create a linear or radial gradient as background or border, check our [CSS Gradient Generator](#).

Hey! You found this booklet interesting? Support Converting Colors with the new Membership Option!

The pro membership hides all ads, plus gives you double the colors in the color bucket, and more awesome pro features!

**[Learn more, Memberships starting at \\$2.50/m!](#)**

**Follow me  
on Twitter!**

@ConvertingColor