

Converting Colors

XYZ(48.9046, 45.2813, 38.0715)

Have a look what the booklet for
XYZ(48.9046, 45.2813, 38.0715)
contains.

XYZ(49.0019, 45.3450, 38.0681)	3
<i>Conversions</i>	4
<i>Details</i>	6
<i>Harmonies</i>	12
<i>Previews</i>	24
<i>Color Blindness Simulation</i>	28
<i>CSS Examples</i>	31

Color

**XYZ(49.0019, 45.3450,
38.0681)**

Conversions

Conversions Part 1

Format	Color
Hex	DAA89D
RGB	218, 168, 157
RGB Percent	85%, 66%, 62%
CMY	0.1451, 0.3412, 0.3843
CMYK	0.00, 0.23, 0.28, 0.15
HSL	11°, 45%, 74%
HSV	11°, 28%, 85%
XYZ	49.0019, 45.3450, 38.0681
YIQ	181.6960, 33.3310, 7.1790

Conversions

Conversions Part 2

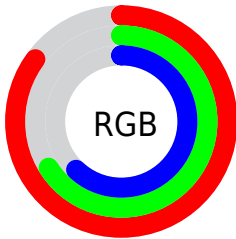
Format	Color
R _Y B	218, 170, 157
Decimal	14330013
CIE Lab	73.12, 16.79, 12.76
CIE LCh	73, 21.088, 37.224
Yxy	45.3450, 0.3701, 0.3424
Android (android.graphics.Color)	4292520093 (0xFFDAA89D)
YUV	181.6960, -12.1751, 31.8386
Hunter-Lab	67.3387, 12.0505, 13.6191

Details

The XYZ color **49.0019, 45.3450, 38.0681** is a light color, and the websafe version is hex **CC9999**. A complement of this color would be **48.8718, 56.8541, 74.7281**, and the grayscale version is **44.3505, 46.6602, 50.8129**.

A 20% lighter version of the original color is **79.5113, 78.7888, 73.3044**, and **23.7472, 21.2128, 16.4785** is the 20% darker color. If you saturate the color by 10%, you get **44.2293, 38.5172, 28.0995**, and if you desaturate by 10%, it is **54.5623, 53.2164, 49.9386**.

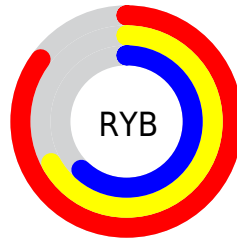
Distribution



Red (85%)

Green (66%)

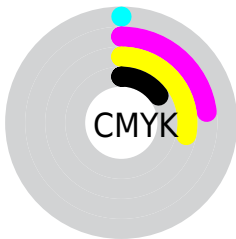
Blue (62%)



Red (85%)

Yellow (67%)

Blue (62%)

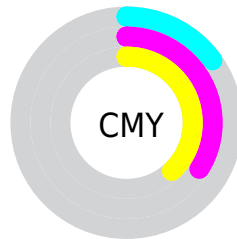


Cyan (0%)

Magenta (23%)

Yellow (28%)

Black (15%)



Cyan (15%)


Magenta (34%)


Yellow (38%)

Brightness & Saturation Gradients


These gradients show how the XYZ color 49.0019, 45.3450, 38.0681 changes by changing the brightness by 10 percent. The first figure shows a shift by +10% for each color and the second figure -10%.


Similar to the brightness gradients but the following saturation gradients show a change of the XYZ color 49.0019, 45.3450, 38.0681 by changing the saturation by 10% instead.


 49.0019, 45.3450,
38.0681


 49.0019, 45.3450,
38.0681


373.2666,
368.1690, 353.2190

 34.8355, 31.7293,
25.7333


 87.8950, 83.2379,
73.4171

 23.7021, 21.1548,
16.4003


 113.3524,
108.2838, 97.2684

 15.2363, 13.2372,
9.6504


143.3042,
137.9086, 125.7955

 9.0728, 7.5921,
5.0652

178.1158,
172.4966, 159.4172

 4.8462, 3.8351,
2.2262

218.1524,
212.4323, 198.5518

 2.1911, 1.5817,
0.6894

263.7796,

 0.7381, 0.3452,

258.1000, 243.6179

0.0000

315.3625,
309.8841, 295.0341

0.0000, 0.0000,
0.0000

49.0019, 45.3450,
38.0681

49.0019, 45.3450,
38.0681

44.2293, 38.5172,
28.0995

54.5623, 53.2164,
49.9386

40.2049, 32.6828,
19.9309

60.9405, 62.1661,
63.8002

36.8908, 27.7970,
13.4551

68.1694, 72.2353,
79.7396

34.2447, 23.8090,
8.5522

76.2790, 83.4608,
97.8377

32.2192, 20.6632,
5.0867

82.7236, 93.6455,
108.3231

■ 30.7604, 18.2973,
2.8996

■ 29.7991, 16.6381,
1.7673

■ 29.6498, 16.3781,
1.5986

Harmonies

Analogous

The Analogous color harmony consists of three colors that are next to each other on the color wheel.



50.5315, 45.3450, 46.8605



49.0019, 45.3450, 38.0681



45.9058, 45.3450, 32.9011

Triad

The Triadic color harmony groups three colors that are evenly spaced from another and form a triangle on the color wheel.



49.0019, 45.3450, 38.0681



36.8800, 45.3450, 41.9139



43.9979, 45.3450, 72.4111

Complementary

The Complementary color scheme is a pair of colors which are on the opposite of each other on the color wheel.



49.0019, 45.3450, 38.0681



48.8718, 56.8541, 74.7281

Split Complementary

Split-complementary colors differ from the complementary color scheme. The scheme consists of three colors, the original color and two neighbors of the complement color.



40.4091, 45.3450, 70.5887



49.0019, 45.3450, 38.0681



36.4337, 45.3450, 51.9738

Square

The Square scheme is like the rectangle color scheme, but the four colors are evenly spaced on the color wheel.



49.0019, 45.3450, 38.0681



38.9461, 45.3450, 34.8903



37.6904, 45.3450, 62.7199



47.5372, 45.3450, 67.3938

Rectangle

The Rectangle color scheme consists of four colors that form a rectangle on the color wheel.



49.0019, 45.3450, 38.0681



43.4437, 45.3450, 31.7243



37.6904, 45.3450, 62.7199



42.7562, 45.3450, 72.5887

Sweetspot

The Sweet Spot groups the original color and five complimentary colors.



49.0031, 45.3471, 38.0690



86.8338, 88.5474, 90.8093



52.3355, 43.5658, 65.2181



18.2743, 18.5168, 18.7553



0.0000, 0.0000, 0.0000



20.3446, 21.4041, 23.3091

Same Dimension

The Same Dimension uses a secret algorithm to generate beautiful new colors.



49.0031, 45.3471, 38.0690



65.4640, 58.3546, 45.0057



55.1176, 57.5761, 40.1072



13.2451, 13.4295, 13.6196



17.8195, 9.9246, 0.9764



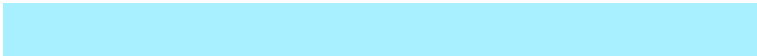
1.2121, 0.7583, 0.0825

Inverse Universe

The Inverse Universe completely reimagines the original color for something new.



48.8718, 56.8541, 74.7281



65.2343, 77.5216, 106.1327



42.3481, 43.8068, 72.5535



13.2347, 14.4092, 16.7358



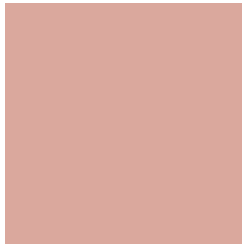
17.2723, 22.4141, 43.1544



1.1722, 1.5585, 2.8135

Previews

White Background



This preview shows how the XYZ color 49.0019, 45.3450, 38.0681 looks on a white background.

Color Contrast Check

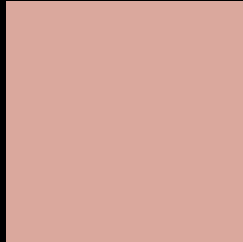
Large Text (above 18pt) WCAG AA × Fail

Any Text WCAG AA × Fail

Large Text (above 18pt) WCAG AAA × Fail

Any Text WCAG AAA × Fail

Black Background



This preview shows how the XYZ color 49.0019, 45.3450, 38.0681 looks on a black background.

Color Contrast Check

Large Text (above 18pt) WCAG AA ✓ Pass

Any Text WCAG AA ✓ Pass

Large Text (above 18pt) WCAG AAA ✓ Pass

Any Text WCAG AAA ✓ Pass

If you want to check with other color combinations, try the [Color Contrast Checker](#).

XYZ 49.0019, 45.3450, 38.0681

Background



This preview shows how black text looks on a background with the XYZ color 49.0019, 45.3450, 38.0681.



This preview shows how white text looks on a background with the XYZ color 49.0019, 45.3450,

38.0681.

Color Blindness Simulation

Color vision deficiency is a very complex topic, and I could not describe the different causes any better than Wikipedia does, so if you want to learn more, you should check out their [article about color blindness](#).

Dichromacy



Original Color

49.0019, 45.3450, 38.0681

Protanopia

43.2245, 45.4493, 41.1448

Deuteranopia

46.3979, 45.4093, 37.7719



Tritanopia

51.0062, 45.3403, 48.1827

Trichromacy



Original Color

49.0019, 45.3450, 38.0681

Protanomaly

45.0517, 45.2389, 40.0757

Deuteranomaly

47.1420, 45.2278, 37.6977

Tritanomaly

50.1053, 45.2348, 44.1206

Monochromacy



Original Color

49.0019, 45.3450, 38.0681

Achromatopsia

44.4628, 46.7784, 50.9417

Achromatomaly

45.7706, 46.0635, 46.0139

CSS Examples

Text

The CSS property to change the color of the text to XYZ 49.0019, 45.3450, 38.0681 is called "color". The color property can be set on classes, ids or directly on the HTML element.

This example shows how text in the color `rgb(218, 168, 157)` looks like.

```
.text, #text, p{  
    color:rgb(218, 168, 157)  
}
```

If you want to add a text shadow in that color use the text-shadow property, you can generate a text shadow directly with our [CSS Text Shadow Generator](#).

Here you see how black text with a 4 pixel rgb(218, 168, 157) colored shadow looks like.

```
.shadow{ text-shadow: 4px 4px 2px rgb(218, 168, 157) }
```

Border

The CSS property to change the border of an element to XYZ 49.0019, 45.3450, 38.0681 is called "border". The border property can be set on classes, ids or directly on the HTML element.

This example shows the color as border, it can be applied via the CSS property "border" or "border-color".

```
.border, #border, table{ border:4px solid rgb(218, 168, 157) }
```


If only the border color should be changed use the property `border-color`.

```
.border{ border-color:rgb(218, 168, 157) }
```

If you want to add a box shadow in that color use:

Here you see how a box with a 4 pixel `rgb(218, 168, 157)` colored shadow looks like.

```
.boxshadow{ -moz-box-shadow:4px 4px 4px  
4px rgb(218, 168, 157); -webkit-box-  
shadow:4px 4px 4px 4px rgb(218, 168, 157);  
box-shadow:4px 4px 4px 4px rgb(218, 168,  
157) }
```

Background

The CSS property to change the background color of an element to XYZ 49.0019, 45.3450, 38.0681 is called "background". The background property can be set on classes, ids or directly on the HTML element.

```
.background, #background, body{  
background: rgb(218, 168, 157) }
```

If only the background color should be changed can be used:

```
.background{ background-color: rgb(218,  
168, 157) }
```

This example shows the color as background, it is applied via the CSS property "background".

To optimize and compress your CSS code, you can use our [online CSS compressor and optimizer](#) based on csstidy. If you want to create a linear or radial gradient as background or border, check our [CSS Gradient Generator](#).

Hey! You found this booklet interesting? Support Converting Colors with the new Membership Option!

The pro membership hides all ads, plus gives you double the colors in the color bucket, and more awesome pro features!

[Learn more, Memberships starting at \\$2.50/m!](#)

**Follow me
on Twitter!**

@ConvertingColor