

Converting Colors

XYZ(48.9168, 48.9579, 54.0907)

Have a look what the booklet for
XYZ(48.9168, 48.9579, 54.0907)
contains.

XYZ(48.9863, 49.0495, 53.8994)	3
<i>Conversions</i>	4
<i>Details</i>	6
<i>Harmonies</i>	12
<i>Previews</i>	24
<i>Color Blindness Simulation</i>	28
<i>CSS Examples</i>	31

Color

**XYZ(48.9863, 49.0495,
53.8994)**

Conversions

Conversions Part 1

Format	Color
Hex	C6B6BB
RGB	198, 182, 187
RGB Percent	78%, 71%, 73%
CMY	0.2235, 0.2863, 0.2667
CMYK	0.00, 0.08, 0.06, 0.22
HSL	341°, 12%, 75%
HSV	341°, 8%, 78%
XYZ	48.9863, 49.0495, 53.8994
YIQ	187.3540, 7.9310, 4.9470

Conversions

Conversions Part 2

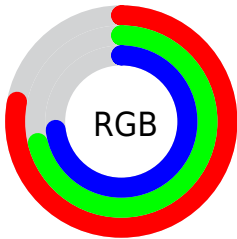
Format	Color
R _Y B	198, 182, 187
Decimal	13022907
CIE Lab	75.48, 6.56, -0.48
CIE LCh	75, 6.579, 355.784
Yxy	49.0495, 0.3224, 0.3228
Android (android.graphics.Color)	4291212987 (0xFFC6B6BB)
YUV	187.3540, -0.1745, 9.3365
Hunter-Lab	70.0353, 2.2902, 3.3950

Details

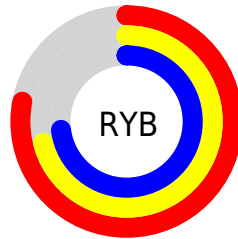
The XYZ color **48.9863, 49.0495, 53.8994** is a light color, and the websafe version is hex **CCCCCC**. A complement of this color would be **49.1130, 54.1848, 58.3248**, and the grayscale version is **47.4329, 49.9031, 54.3445**.

A 20% lighter version of the original color is **87.9922, 88.8801, 97.3119**, and **23.6549, 23.3510, 25.8147** is the 20% darker color. If you saturate the color by 10%, you get **43.8256, 40.9508, 45.3257**, and if you desaturate by 10%, it is **54.8613, 58.3544, 63.3942**.

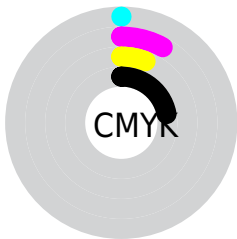
Distribution



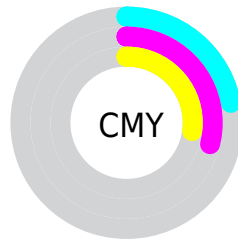
- Red (78%)
- Green (71%)
- Blue (73%)



- Red (78%)
- Yellow (71%)
- Blue (73%)



- Cyan (0%)
- Magenta (8%)
- Yellow (6%)
- Black (22%)



- Cyan (22%)
- Magenta (29%)
- Yellow (27%)

Brightness & Saturation Gradients

These gradients show how the XYZ color 48.9863, 49.0495, 53.8994 changes by changing the brightness by 10 percent. The first figure shows a shift by +10% for each color and the second figure -10%.

Similar to the brightness gradients but the following saturation gradients show a change of the XYZ color 48.9863, 49.0495, 53.8994 by changing the saturation by 10% instead.

■ 48.9863, 49.0495,
53.8994

■ 48.9863, 49.0495,
53.8994

373.2062,
382.9372, 418.8900

■ 34.8231, 34.6587,
38.1286

■ 87.8720, 88.7650,
97.3814

■ 23.6925, 23.4001,
25.7799

113.3251,
114.8585, 125.9298

■ 15.2292, 14.8892,
16.4348

143.2723,
145.6217, 159.5743

■ 9.0678, 8.7417,
9.6747

178.0789,
181.4390, 198.7337

■ 4.8429, 4.5731,
5.0810

218.1102,
222.6948, 243.8264

■ 2.1892, 1.9990,
2.2353

263.7317,

■ 0.7370, 0.6069,

269.7735, 295.2710

0.6946

315.3085,
323.0595, 353.4861

0.0000, 0.0000,
0.0000

48.9863, 49.0495,
53.8994

48.9863, 49.0495,
53.8994

43.8256, 40.9508,
45.3257

54.8613, 58.3544,
63.3942

39.3474, 34.0025,
37.6420

61.4727, 68.9057,
73.8339

35.5234, 28.1540,
30.8196

68.8467, 80.7495,
85.2453

32.3217, 23.3483,
24.8272

74.9954, 89.9045,
96.9824

29.7078, 19.5232,
19.6317

77.0990, 90.7459,
108.0599

■ 27.6436, 16.6099,
15.1972

■ 26.0861, 14.5306,
11.4851

■ 24.9855, 13.1942,
8.4524

■ 24.2690, 12.4640,
6.0466

Harmonies

Analogous

The Analogous color harmony consists of three colors that are next to each other on the color wheel.



48.5765, 49.0495, 57.2535



48.9863, 49.0495, 53.8994



48.7531, 49.0495, 50.5519

Triad

The Triadic color harmony groups three colors that are evenly spaced from another and form a triangle on the color wheel.



48.9863, 49.0495, 53.8994



45.6124, 49.0495, 47.6119



45.3201, 49.0495, 59.1259

Complementary

The Complementary color scheme is a pair of colors which are on the opposite of each other on the color wheel.



48.9863, 49.0495, 53.8994



49.1130, 54.1848, 58.3248

Split Complementary

Split-complementary colors differ from the complementary color scheme. The scheme consists of three colors, the original color and two neighbors of the complement color.



44.5502, 49.0495, 56.3667



48.9863, 49.0495, 53.8994



44.7169, 49.0495, 49.7359

Square

The Square scheme is like the rectangle color scheme, but the four colors are evenly spaced on the color wheel.



48.9863, 49.0495, 53.8994



46.7918, 49.0495, 47.0148



44.3313, 49.0495, 52.9167



46.4487, 49.0495, 60.3528

Rectangle

The Rectangle color scheme consists of four colors that form a rectangle on the color wheel.



48.9863, 49.0495, 53.8994



48.2665, 49.0495, 48.7584



44.3313, 49.0495, 52.9167



45.0116, 49.0495, 58.3412

Sweetspot

The Sweet Spot groups the original color and five complimentary colors.



48.9877, 49.0516, 53.9005



92.8850, 96.5653, 105.4182



48.8980, 48.8641, 60.2813



19.9039, 20.7049, 22.6004



0.0000, 0.0000, 0.0000



20.3446, 21.4041, 23.3091

Same Dimension

The Same Dimension uses a secret algorithm to generate beautiful new colors.



48.9877, 49.0516, 53.9005



84.7520, 83.7174, 92.1698



49.0688, 50.0552, 51.3339



10.7681, 10.6906, 11.7619



15.7423, 8.0465, 3.8528



0.7784, 0.3942, 0.3563

Inverse Universe

The Inverse Universe completely reimagines the original color for something new.



48.9877, 49.0516, 53.9005



84.7520, 83.7174, 92.1698



49.0161, 53.0838, 61.0895



10.7681, 10.6906, 11.7619



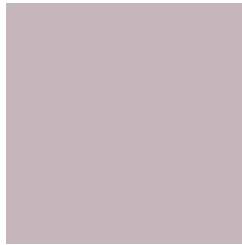
15.7423, 8.0465, 3.8528



0.7784, 0.3942, 0.3563

Previews

White Background



This preview shows how the XYZ color 48.9863, 49.0495, 53.8994 looks on a white background.

Color Contrast Check

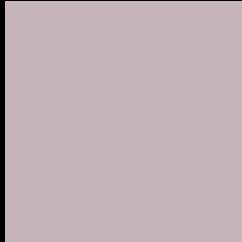
Large Text (above 18pt) WCAG AA × Fail

Any Text WCAG AA × Fail

Large Text (above 18pt) WCAG AAA × Fail

Any Text WCAG AAA × Fail

Black Background



This preview shows how the XYZ color 48.9863, 49.0495, 53.8994 looks on a black background.

Color Contrast Check

Large Text (above 18pt) WCAG AA ✓ Pass

Any Text WCAG AA ✓ Pass

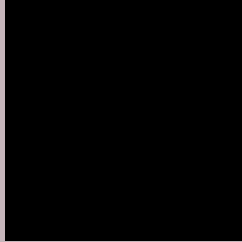
Large Text (above 18pt) WCAG AAA ✓ Pass

Any Text WCAG AAA ✓ Pass

If you want to check with other color combinations, try the [Color Contrast Checker](#).

XYZ 48.9863, 49.0495, 53.8994

Background



This preview shows how black text looks on a background with the XYZ color 48.9863, 49.0495, 53.8994.



This preview shows how white text looks on a background with the XYZ color 48.9863, 49.0495,

Color Blindness Simulation

Color vision deficiency is a very complex topic, and I could not describe the different causes any better than Wikipedia does, so if you want to learn more, you should check out their [article about color blindness](#).

Dichromacy



Original Color

48.9863, 49.0495, 53.8994

Protanopia

47.2733, 49.0634, 55.1227

Deuteranopia

49.9195, 48.9269, 53.8265



Tritanopia

49.9274, 49.1300, 58.4813

Trichromacy



Original Color

48.9863, 49.0495, 53.8994

Protanomaly

47.9558, 49.1183, 54.5302

Deuteranomaly

49.5809, 49.0531, 53.8687

Tritanomaly

49.5915, 48.9956, 56.7125

Monochromacy



Original Color

48.9863, 49.0495, 53.8994

Achromatopsia

47.2335, 49.6933, 54.1160

Achromatomaly

47.8045, 49.3621, 54.0220

CSS Examples

Text

The CSS property to change the color of the text to XYZ 48.9863, 49.0495, 53.8994 is called "color". The color property can be set on classes, ids or directly on the HTML element.

This example shows how text in the color `rgb(198, 182, 187)` looks like.

```
.text, #text, p{  
    color:rgb(198, 182, 187)  
}
```

If you want to add a text shadow in that color use the text-shadow property, you can generate a text shadow directly with our [CSS Text Shadow Generator](#).

Here you see how black text with a 4 pixel rgb(198, 182, 187) colored shadow looks like.

```
.shadow{ text-shadow: 4px 4px 2px rgb(198, 182, 187) }
```

Border

The CSS property to change the border of an element to XYZ 48.9863, 49.0495, 53.8994 is called "border". The border property can be set on classes, ids or directly on the HTML element.

This example shows the color as border, it can be applied via the CSS property "border" or "border-color".

```
.border, #border, table{ border:4px solid rgb(198, 182, 187) }
```


If only the border color should be changed use the property `border-color`.

```
.border{ border-color:rgb(198, 182, 187) }
```

If you want to add a box shadow in that color use:

Here you see how a box with a 4 pixel `rgb(198, 182, 187)` colored shadow looks like.

```
.boxshadow{ -moz-box-shadow:4px 4px 4px  
4px rgb(198, 182, 187); -webkit-box-  
shadow:4px 4px 4px 4px rgb(198, 182, 187);  
box-shadow:4px 4px 4px 4px rgb(198, 182,  
187) }
```

Background

The CSS property to change the background color of an element to XYZ 48.9863, 49.0495, 53.8994 is called "background". The background property can be set on classes, ids or directly on the HTML element.

```
.background, #background, body{  
background: rgb(198, 182, 187) }
```

If only the background color should be changed can be used:

```
.background{ background-color: rgb(198,  
182, 187) }
```

This example shows the color as background, it is applied via the CSS property "background".

To optimize and compress your CSS code, you can use our [online CSS compressor and optimizer](#) based on csstidy. If you want to create a linear or radial gradient as background or border, check our [CSS Gradient Generator](#).

Hey! You found this booklet interesting? Support Converting Colors with the new Membership Option!

The pro membership hides all ads, plus gives you double the colors in the color bucket, and more awesome pro features!

[Learn more, Memberships starting at \\$2.50/m!](#)

**Follow me
on Twitter!**

@ConvertingColor