

Converting Colors

XYZ(49.0310, 45.8094, 46.3774)

Have a look what the booklet for
XYZ(49.0310, 45.8094, 46.3774)
contains.

XYZ(48.8787, 45.6543, 46.2804)	3
<i>Conversions</i>	4
<i>Details</i>	6
<i>Harmonies</i>	12
<i>Previews</i>	24
<i>Color Blindness Simulation</i>	28
<i>CSS Examples</i>	31

Color

**XYZ(48.8787, 45.6543,
46.2804)**

Conversions

Conversions Part 1

Format	Color
Hex	D3AAAE
RGB	211, 170, 174
RGB Percent	83%, 67%, 68%
CMY	0.1725, 0.3333, 0.3176
CMYK	0.00, 0.19, 0.18, 0.17
HSL	354°, 32%, 75%
HSV	354°, 19%, 83%
XYZ	48.8787, 45.6543, 46.2804
YIQ	182.7150, 23.1520, 9.9360

Conversions

Conversions Part 2

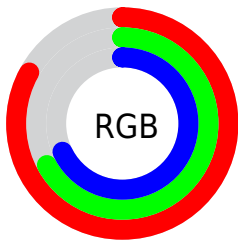
Format	Color
RYB	211, 170, 174
Decimal	13871790
CIELab	73.32, 15.58, 3.63
CIELCh	73, 16.001, 13.098
Yxy	45.6543, 0.3471, 0.3242
Android (android.graphics.Color)	4292061870 (0xFFD3AAAE)
YUV	182.7150, -4.2965, 24.8059
Hunter-Lab	67.5680, 10.8830, 6.6871

Details

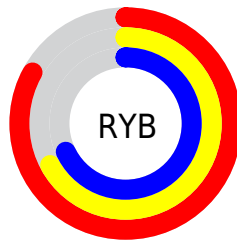
The XYZ color **48.8787, 45.6543, 46.2804** is a light color, and the websafe version is hex **CC9999**. A complement of this color would be **51.1361, 59.6407, 67.8510**, and the grayscale version is **44.8686, 47.2052, 51.4065**.

A 20% lighter version of the original color is **82.3081, 80.7676, 85.3803**, and **23.7016, 21.4299, 21.2995** is the 20% darker color. If you saturate the color by 10%, you get **43.5095, 37.6790, 35.9714**, and if you desaturate by 10%, it is **55.1485, 55.0087, 58.1892**.

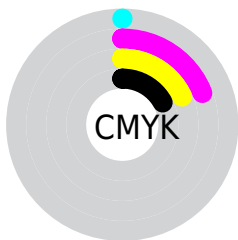
Distribution



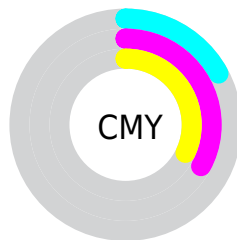
- Red (83%)
- Green (67%)
- Blue (68%)



- Red (83%)
- Yellow (67%)
- Blue (68%)



- Cyan (0%)
- Magenta (19%)
- Yellow (18%)
- Black (17%)




- Cyan (17%)
- Magenta (33%)
- Yellow (32%)

Brightness & Saturation Gradients

These gradients show how the XYZ color 48.8787, 45.6543, 46.2804 changes by changing the brightness by 10 percent. The first figure shows a shift by +10% for each color and the second figure -10%.


Similar to the brightness gradients but the following saturation gradients show a change of the XYZ color 48.8787, 45.6543, 46.2804 by changing the saturation by 10% instead.


 48.8787, 45.6543,
46.2804

 48.8787, 45.6543,
46.2804


372.7895,
369.4171, 388.2451

 34.7374, 31.9731,
32.1169


 87.7131, 83.7014,
85.9772

 23.6262, 21.3410,
21.1852


113.1369,
108.8361, 112.3475

 15.1798, 13.3735,
13.0669


143.0522,
138.5574, 143.6239

 9.0328, 7.6862,
7.3434

177.8244,
173.2497, 180.2249

 4.8199, 3.8948,
3.5961

217.8189,
213.2975, 222.5689

 2.1756, 1.6149,
1.4065

263.4010,

 0.7299, 0.3676,

259.0850, 271.0746

0.1468

314.9361,
310.9967, 326.1605

■ 0.0000, 0.0000,
0.0000

■ 48.8787, 45.6543,
46.2804

■ 48.8787, 45.6543,
46.2804

■ 43.5095, 37.6790,
35.9714

■ 55.1485, 55.0087,
58.1892

■ 38.9958, 31.0116,
27.1913

■ 62.3537, 65.7965,
71.7590

■ 35.2945, 25.5843,
19.8681

■ 70.5319, 78.0767,
87.0512

■ 32.3570, 21.3202,
13.9226

■ 79.7174, 91.9032,
104.1233

■ 30.1296, 18.1344,
9.2684

■ 80.6742, 92.5890,
108.2272

■ 28.5517, 15.9298,
5.8092

■ 27.5520, 14.5925,
3.4348

■ 27.0188, 13.9318,
2.0068

■ 26.9956, 13.9016,
1.9491

Harmonies

Analogous

The Analogous color harmony consists of three colors that are next to each other on the color wheel.



48.7782, 45.6543, 54.3519



48.8787, 45.6543, 46.2804



47.4646, 45.6543, 39.8569

Triad

The Triadic color harmony groups three colors that are evenly spaced from another and form a triangle on the color wheel.



48.8787, 45.6543, 46.2804



39.8005, 45.6543, 39.2326



41.8390, 45.6543, 66.0576

Complementary

The Complementary color scheme is a pair of colors which are on the opposite of each other on the color wheel.



48.8787, 45.6543, 46.2804



51.1361, 59.6407, 67.8510

Split Complementary

Split-complementary colors differ from the complementary color scheme. The scheme consists of three colors, the original color and two neighbors of the complement color.



39.5613, 45.6543, 61.0658



48.8787, 45.6543, 46.2804



38.4196, 45.6543, 45.3397

Square

The Square scheme is like the rectangle color scheme, but the four colors are evenly spaced on the color wheel.



48.8787, 45.6543, 46.2804



42.1785, 45.6543, 36.0941



38.3340, 45.6543, 53.3045



44.6307, 45.6543, 66.3799

Rectangle

The Rectangle color scheme consists of four colors that form a rectangle on the color wheel.



48.8787, 45.6543, 46.2804



45.8873, 45.6543, 37.1328



38.3340, 45.6543, 53.3045



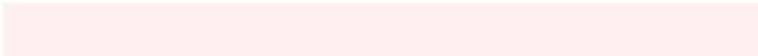
40.9909, 45.6543, 64.8474

Sweetspot

The Sweet Spot groups the original color and five complimentary colors.



48.8800, 45.6564, 46.2814



88.2176, 89.7660, 96.0461



51.8382, 46.7057, 67.9115



18.7300, 18.9859, 20.2707



0.0000, 0.0000, 0.0000



20.3446, 21.4041, 23.3091

Same Dimension

The Same Dimension uses a secret algorithm to generate beautiful new colors.



48.8800, 45.6564, 46.2814



71.7276, 65.1654, 64.7166



51.7644, 52.0395, 45.3490



11.8549, 11.8267, 12.5117



16.3090, 8.3964, 1.2674



0.9283, 0.4760, 0.1572

Inverse Universe

The Inverse Universe completely reimagines the original color for something new.



48.8800, 45.6564, 46.2814



71.7276, 65.1654, 64.7166



47.7628, 52.1021, 69.1679



11.8549, 11.8267, 12.5117



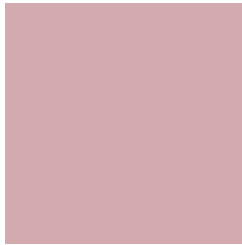
16.3090, 8.3964, 1.2674



0.9283, 0.4760, 0.1572

Previews

White Background



This preview shows how the XYZ color 48.8787, 45.6543, 46.2804 looks on a white background.

Color Contrast Check

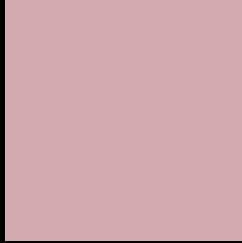
Large Text (above 18pt) WCAG AA × Fail

Any Text WCAG AA × Fail

Large Text (above 18pt) WCAG AAA × Fail

Any Text WCAG AAA × Fail

Black Background



This preview shows how the XYZ color 48.8787, 45.6543, 46.2804 looks on a black background.

Color Contrast Check

Large Text (above 18pt) WCAG AA ✓ Pass

Any Text WCAG AA ✓ Pass

Large Text (above 18pt) WCAG AAA ✓ Pass

Any Text WCAG AAA ✓ Pass

If you want to check with other color combinations, try the [Color Contrast Checker](#).

XYZ 48.8787, 45.6543, 46.2804

Background



This preview shows how black text looks on a background with the XYZ color 48.8787, 45.6543, 46.2804.



This preview shows how white text looks on a background with the XYZ color 48.8787, 45.6543,

Color Blindness Simulation

Color vision deficiency is a very complex topic, and I could not describe the different causes any better than Wikipedia does, so if you want to learn more, you should check out their [article about color blindness](#).

Dichromacy



Original Color

48.8787, 45.6543, 46.2804

Protanopia

44.0239, 45.6852, 49.1456

Deuteranopia

46.4983, 45.5686, 45.8801



Tritanopia

49.7828, 45.7504, 50.4628

Trichromacy



Original Color

48.8787, 45.6543, 46.2804

Protanomaly

45.7093, 45.6943, 48.0057

Deuteranomaly

47.3882, 45.7416, 45.8666

Tritanomaly

49.4760, 45.6277, 48.8472

Monochromacy



Original Color

48.8787, 45.6543, 46.2804

Achromatopsia

45.0092, 47.3531, 51.5676

Achromatomaly

46.1509, 46.4735, 49.7179

CSS Examples

Text

The CSS property to change the color of the text to XYZ 48.8787, 45.6543, 46.2804 is called "color". The color property can be set on classes, ids or directly on the HTML element.

This example shows how text in the color `rgb(211, 170, 174)` looks like.

```
.text, #text, p{  
    color:rgb(211, 170, 174)  
}
```

If you want to add a text shadow in that color use the text-shadow property, you can generate a text shadow directly with our [CSS Text Shadow Generator](#).

Here you see how black text with a 4 pixel rgb(211, 170, 174) colored shadow looks like.

```
.shadow{ text-shadow: 4px 4px 2px rgb(211, 170, 174) }
```

Border

The CSS property to change the border of an element to XYZ 48.8787, 45.6543, 46.2804 is called "border". The border property can be set on classes, ids or directly on the HTML element.

This example shows the color as border, it can be applied via the CSS property "border" or "border-color".

```
.border, #border, table{ border:4px solid rgb(211, 170, 174) }
```


If only the border color should be changed use the property border-color.

```
.border{ border-color:rgb(211, 170, 174) }
```

If you want to add a box shadow in that color use:

Here you see how a box with a 4 pixel rgb(211, 170, 174) colored shadow looks like.

```
.boxshadow{ -moz-box-shadow:4px 4px 4px  
4px rgb(211, 170, 174); -webkit-box-  
shadow:4px 4px 4px 4px rgb(211, 170, 174);  
box-shadow:4px 4px 4px 4px rgb(211, 170,  
174) }
```

Background

The CSS property to change the background color of an element to XYZ 48.8787, 45.6543, 46.2804 is called "background". The background property can be set on classes, ids or directly on the HTML element.

```
.background, #background, body{  
background: rgb(211, 170, 174) }
```

If only the background color should be changed can be used:

```
.background{ background-color: rgb(211,  
170, 174) }
```

This example shows the color as background, it is applied via the CSS property "background".

To optimize and compress your CSS code, you can use our [online CSS compressor and optimizer](#) based on csstidy. If you want to create a linear or radial gradient as background or border, check our [CSS Gradient Generator](#).

Hey! You found this booklet interesting? Support Converting Colors with the new Membership Option!

The pro membership hides all ads, plus gives you double the colors in the color bucket, and more awesome pro features!

[Learn more, Memberships starting at \\$2.50/m!](#)

**Follow me
on Twitter!**

@ConvertingColor