

Converting Colors

XYZ(49.0809, 49.7474, 52.3628)

Have a look what the booklet for
XYZ(49.0809, 49.7474, 52.3628)
contains.

XYZ(49.0809, 49.7474, 52.3628)	3
<i>Conversions</i>	4
<i>Details</i>	6
<i>Harmonies</i>	12
<i>Previews</i>	24
<i>Color Blindness Simulation</i>	28
<i>CSS Examples</i>	31

Color

**XYZ(49.0809, 49.7474,
52.3628)**

Conversions

Conversions Part 1

Format	Color
Hex	C6B8B8
RGB	198, 184, 184
RGB Percent	78%, 72%, 72%
CMY	0.2235, 0.2784, 0.2784
CMYK	0.00, 0.07, 0.07, 0.22
HSL	0°, 11%, 75%
HSV	0°, 7%, 78%
XYZ	49.0809, 49.7474, 52.3628
YIQ	188.1860, 8.3440, 2.9680

Conversions

Conversions Part 2

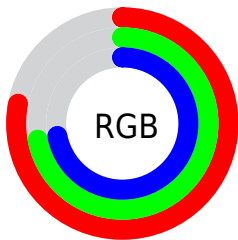
Format	Color
RYB	198, 184, 184
Decimal	13023416
CIELab	75.91, 4.96, 1.78
CIELCh	76, 5.267, 19.737
Yxy	49.7474, 0.3246, 0.3290
Android (android.graphics.Color)	4291213496 (0xFFC6B8B8)
YUV	188.1860, -2.0637, 8.6069
Hunter-Lab	70.5318, 0.7819, 5.3554

Details

The XYZ color **49.0809, 49.7474, 52.3628** is a light color, and the websafe version is hex **CCCCCC**. A complement of this color would be **50.1542, 54.6549, 61.3327**, and the grayscale version is **47.9148, 50.4101, 54.8966**.

A 20% lighter version of the original color is **88.1283, 89.8714, 95.1401**, and **23.7146, 23.8006, 24.8168** is the 20% darker color. If you saturate the color by 10%, you get **43.3209, 41.3194, 40.9095**, and if you desaturate by 10%, it is **55.7096, 59.4468, 65.5401**.

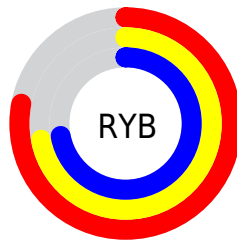
Distribution



Red (78%)

Green (72%)

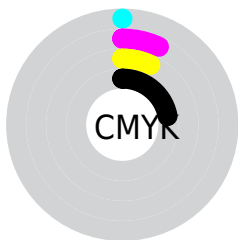
Blue (72%)



Red (78%)

Yellow (72%)

Blue (72%)

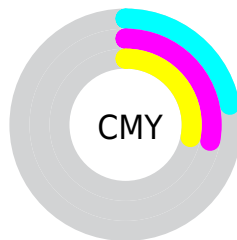


Cyan (0%)

Magenta (7%)

Yellow (7%)

Black (22%)



Cyan (22%)

Magenta (28%)

Yellow (28%)

Brightness & Saturation Gradients

These gradients show how the XYZ color 49.0809, 49.7474, 52.3628 changes by changing the brightness by 10 percent. The first figure shows a shift by +10% for each color and the second figure -10%.

Similar to the brightness gradients but the following saturation gradients show a change of the XYZ color 49.0809, 49.7474, 52.3628 by changing the saturation by 10% instead.

■ 49.0809, 49.7474,
52.3628

■ 49.0809, 49.7474,
52.3628

373.5724,
385.6773, 412.8324

■ 34.8985, 35.2127,
36.9101

■ 88.0116, 89.8005,
95.0981

■ 23.7508, 23.8268,
24.8427

113.4906,
116.0877, 123.2178

■ 15.2726, 15.2052,
15.7419

143.4657,
147.0612, 156.3969

■ 9.0985, 8.9635,
9.1893

178.3025,
183.1055, 195.0539

■ 4.8631, 4.7174,
4.7664

218.3662,
224.6048, 239.6074

■ 2.2011, 2.0824,
2.0545

264.0222,

■ 0.7433, 0.6547,

271.9436, 290.4760

0.5885

315.6358,
325.5063, 348.0781

■ 0.0000, 0.0000,
0.0000

■ 49.0809, 49.7474,
52.3628

■ 49.0809, 49.7474,
52.3628

■ 43.3209, 41.3194,
40.9095

■ 55.7096, 59.4468,
65.5401

■ 38.3898, 34.1039,
31.1060

■ 63.2366, 70.4603,
80.5053

■ 34.2506, 28.0472,
22.8771

■ 71.6951, 82.8367,
97.3227

■ 30.8621, 23.0889,
16.1410

■ 77.0990, 90.7459,
108.0599

■ 28.1794, 19.1631,
10.8082

■ 26.1526, 16.1972,
6.7796

■ 24.7255, 14.1087,
3.9433

■ 23.8325, 12.8017,
2.1689

■ 23.3842, 12.1455,
1.2784

Harmonies

Analogous

The Analogous color harmony consists of three colors that are next to each other on the color wheel.



49.1636, 49.7474, 55.1345



49.0809, 49.7474, 52.3628



48.5128, 49.7474, 50.1484

Triad

The Triadic color harmony groups three colors that are evenly spaced from another and form a triangle on the color wheel.



49.0809, 49.7474, 52.3628



45.8588, 49.7474, 50.7501



46.9482, 49.7474, 59.6571

Complementary

The Complementary color scheme is a pair of colors which are on the opposite of each other on the color wheel.



49.0809, 49.7474, 52.3628



50.1542, 54.6549, 61.3327

Split Complementary

Split-complementary colors differ from the complementary color scheme. The scheme consists of three colors, the original color and two neighbors of the complement color.



46.0750, 49.7474, 58.3936



49.0809, 49.7474, 52.3628



45.4518, 49.7474, 53.2098

Square

The Square scheme is like the rectangle color scheme, but the four colors are evenly spaced on the color wheel.



49.0809, 49.7474, 52.3628



46.6494, 49.7474, 49.2399



45.5304, 49.7474, 56.0111



47.9232, 49.7474, 59.4112

Rectangle

The Rectangle color scheme consists of four colors that form a rectangle on the color wheel.



49.0809, 49.7474, 52.3628



47.9396, 49.7474, 49.2558



45.5304, 49.7474, 56.0111



46.6333, 49.7474, 59.3931

Sweetspot

The Sweet Spot groups the original color and five complimentary colors.



49.0823, 49.7496, 52.3639



92.6346, 96.4657, 104.0977



50.6229, 50.3647, 60.4799



19.8529, 20.6846, 22.3315



0.0000, 0.0000, 0.0000



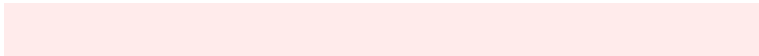
20.3446, 21.4041, 23.3091

Same Dimension

The Same Dimension uses a secret algorithm to generate beautiful new colors.



49.0823, 49.7496, 52.3639



85.7730, 86.4257, 90.4557



50.5719, 52.7288, 52.8604



10.6341, 10.6373, 11.0555



15.1457, 7.8085, 0.7089



0.7172, 0.3699, 0.0336

Inverse Universe

The Inverse Universe completely reimagines the original color for something new.



50.1542, 54.6549, 61.3327



87.9375, 96.3311, 108.5667



48.5917, 51.5299, 60.8119



10.9465, 12.0671, 13.6697



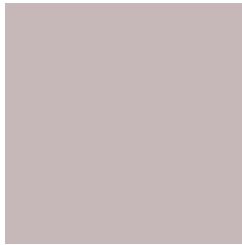
19.7546, 28.9032, 39.2821



0.9355, 1.3687, 1.8600

Previews

White Background



This preview shows how the XYZ color 49.0809, 49.7474, 52.3628 looks on a white background.

Color Contrast Check

Large Text (above 18pt) WCAG AA × Fail

Any Text WCAG AA × Fail

Large Text (above 18pt) WCAG AAA × Fail

Any Text WCAG AAA × Fail

Black Background



This preview shows how the XYZ color 49.0809, 49.7474, 52.3628 looks on a black background.

Color Contrast Check

Large Text (above 18pt) WCAG AA ✓ Pass

Any Text WCAG AA ✓ Pass

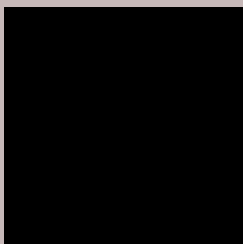
Large Text (above 18pt) WCAG AAA ✓ Pass

Any Text WCAG AAA ✓ Pass

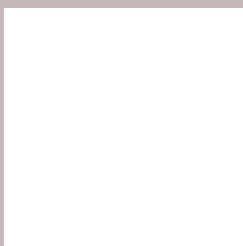
If you want to check with other color combinations, try the [Color Contrast Checker](#).

XYZ 49.0809, 49.7474, 52.3628

Background



This preview shows how black text looks on a background with the XYZ color 49.0809, 49.7474, 52.3628.



This preview shows how white text looks on a background with the XYZ color 49.0809, 49.7474,

Color Blindness Simulation

Color vision deficiency is a very complex topic, and I could not describe the different causes any better than Wikipedia does, so if you want to learn more, you should check out their [article about color blindness](#).

Dichromacy



Original Color

49.0809, 49.7474, 52.3628

Protanopia

47.8017, 49.6970, 52.9720

Deuteranopia

50.7344, 49.6723, 52.8127



Tritanopia

50.5112, 49.7208, 59.1594

Trichromacy



Original Color

49.0809, 49.7474, 52.3628

Protanomaly

48.3541, 49.6700, 52.9377

Deuteranomaly

50.1135, 49.6552, 52.8421

Tritanomaly

50.0011, 49.8149, 56.8491

Monochromacy



Original Color

49.0809, 49.7474, 52.3628

Achromatopsia

47.7994, 50.2886, 54.7643

Achromatomaly

48.4782, 50.3350, 54.1743

CSS Examples

Text

The CSS property to change the color of the text to XYZ 49.0809, 49.7474, 52.3628 is called "color". The color property can be set on classes, ids or directly on the HTML element.

This example shows how text in the color rgb(198, 184, 184) looks like.

```
.text, #text, p{  
    color:rgb(198, 184, 184)  
}
```

If you want to add a text shadow in that color use the text-shadow property, you can generate a text shadow directly with our [CSS Text Shadow Generator](#).

Here you see how black text with a 4 pixel rgb(198, 184, 184) colored shadow looks like.

```
.shadow{ text-shadow: 4px 4px 2px rgb(198, 184, 184) }
```

Border

The CSS property to change the border of an element to XYZ 49.0809, 49.7474, 52.3628 is called "border". The border property can be set on classes, ids or directly on the HTML element.

This example shows the color as border, it can be applied via the CSS property "border" or "border-color".

```
.border, #border, table{ border:4px solid rgb(198, 184, 184) }
```


If only the border color should be changed use the property border-color.

```
.border{ border-color:rgb(198, 184, 184) }
```

If you want to add a box shadow in that color use:

Here you see how a box with a 4 pixel rgb(198, 184, 184) colored shadow looks like.

```
.boxshadow{ -moz-box-shadow:4px 4px 4px  
4px rgb(198, 184, 184); -webkit-box-  
shadow:4px 4px 4px 4px rgb(198, 184, 184);  
box-shadow:4px 4px 4px 4px rgb(198, 184,  
184) }
```

Background

The CSS property to change the background color of an element to XYZ 49.0809, 49.7474, 52.3628 is called "background". The background property can be set on classes, ids or directly on the HTML element.

```
.background, #background, body{  
background: rgb(198, 184, 184) }
```

If only the background color should be changed can be used:

```
.background{ background-color: rgb(198,  
184, 184) }
```

This example shows the color as background, it is applied via the CSS property "background".

To optimize and compress your CSS code, you can use our [online CSS compressor and optimizer](#) based on csstidy. If you want to create a linear or radial gradient as background or border, check our [CSS Gradient Generator](#).

Hey! You found this booklet interesting? Support Converting Colors with the new Membership Option!

The pro membership hides all ads, plus gives you double the colors in the color bucket, and more awesome pro features!

[Learn more, Memberships starting at \\$2.50/m!](#)

**Follow me
on Twitter!**

@ConvertingColor