

Converting Colors

XYZ(49.2147, 32.0521, 20.4874)

Have a look what the booklet for
XYZ(49.2147, 32.0521, 20.4874)
contains.

XYZ(49.2023, 32.0471, 20.4221)	3
<i>Conversions</i>	4
<i>Details</i>	6
<i>Harmonies</i>	12
<i>Previews</i>	24
<i>Color Blindness Simulation</i>	28
<i>CSS Examples</i>	31

Color

**XYZ(49.2023, 32.0471,
20.4221)**

Conversions

Conversions Part 1

Format	Color
Hex	FF6675
RGB	255, 102, 117
RGB Percent	100%, 40%, 46%
CMY	0.0000, 0.6000, 0.5412
CMYK	0.00, 0.60, 0.54, 0.00
HSL	354°, 100%, 70%
HSV	354°, 60%, 100%
XYZ	49.2023, 32.0471, 20.4221
YIQ	149.4570, 86.3730, 37.1010

Conversions

Conversions Part 2

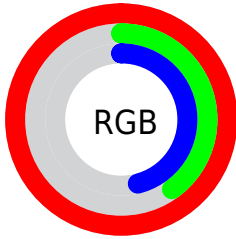
Format	Color
R_{YB}	255, 102, 117
Decimal	16737909
CIE Lab	63.38, 59.31, 22.38
CIE LCh	63, 63.389, 20.676
Yxy	32.0471, 0.4839, 0.3152
Android (android.graphics.Color)	4294927989 (0xFFFF6675)
YUV	149.4570, -16.0013, 92.5612
Hunter-Lab	56.6102, 56.0742, 18.2383

Details

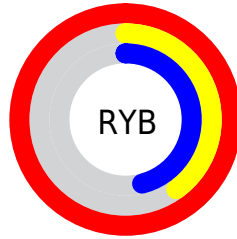
The XYZ color **49.2023, 32.0471, 20.4221** is a light color, and the websafe version is hex **FF6666**. A complement of this color would be **56.9698, 80.6369, 95.0062**, and the grayscale version is **28.8008, 30.3007, 32.9975**.

A 20% lighter version of the original color is **60.6283, 48.5783, 43.7172**, and **23.9304, 13.4949, 6.9737** is the 20% darker color. If you saturate the color by 10%, you get **45.8799, 27.3074, 13.4423**, and if you desaturate by 10%, it is **53.6290, 38.4640, 29.4095**.

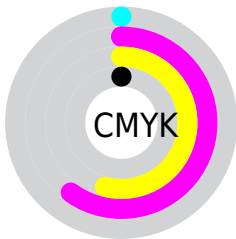
Distribution



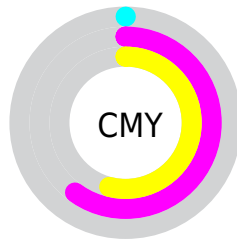
- Red (100%)
- Green (40%)
- Blue (46%)



- Red (100%)
- Yellow (40%)
- Blue (46%)



- Cyan (0%)
- Magenta (60%)
- Yellow (54%)
- Black (0%)



- Cyan (0%)
- Magenta (60%)
- Yellow (54%)

Brightness & Saturation Gradients

These gradients show how the XYZ color 49.2023, 32.0471, 20.4221 changes by changing the brightness by 10 percent. The first figure shows a shift by +10% for each color and the second figure -10%.

Similar to the brightness gradients but the following saturation gradients show a change of the XYZ color 49.2023, 32.0471, 20.4221 by changing the saturation by 10% instead.

49.2023, 32.0471,
20.4221

49.2023, 32.0471,
20.4221

374.0419,
311.3338, 266.8705

34.9952, 21.3975,
12.5151

88.1908, 62.8849,
44.9920

23.8257, 13.4149,
6.9687

113.7028, 83.8419,
62.4920

15.3284, 7.7148,
3.3644

143.7139,
109.0035, 84.0267

9.1380, 3.9130,
1.2836

178.5893,
138.7540, 110.0147

4.8891, 1.6250,
0.0483

218.6945,
173.4779, 140.8746

2.2164, 0.3744,
0.0000

264.3947,

0.7514, 0.0000,

213.5596, 177.0248

0.0000

316.0554,
259.3834, 218.8839

■ 0.0000, 0.0000,
0.0000

■ 49.2023, 32.0471,
20.4221

■ 49.2023, 32.0471,
20.4221

■ 45.8799, 27.3074,
13.4423

■ 53.6290, 38.4640,
29.4095

■ 43.5614, 24.0833,
8.3136

■ 59.2438, 46.6899,
40.5414

■ 42.1319, 22.1906,
4.8586

■ 66.1252, 56.8491,
53.9447

■ 41.4154, 21.3303,
2.8538

■ 74.3442, 69.0537,
69.7356

■ 41.4152, 21.3301,
2.8533

■ 83.9667, 83.4073,
88.0227

95.0499, 99.9999,
108.9000

Harmonies

Analogous

The Analogous color harmony consists of three colors that are next to each other on the color wheel.



50.4051, 32.0471, 43.3532



49.2023, 32.0471, 20.4221



42.4966, 32.0471, 9.2211

Triad

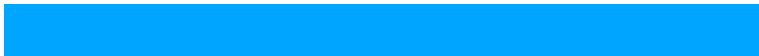
The Triadic color harmony groups three colors that are evenly spaced from another and form a triangle on the color wheel.



49.2023, 32.0471, 20.4221



19.1511, 32.0471, 12.3050



27.7985, 32.0471, 107.9332

Complementary

The Complementary color scheme is a pair of colors which are on the opposite of each other on the color wheel.



49.2023, 32.0471, 20.4221



56.9698, 80.6369, 95.0062

Split Complementary

Split-complementary colors differ from the complementary color scheme. The scheme consists of three colors, the original color and two neighbors of the complement color.



20.9420, 32.0471, 87.4415



49.2023, 32.0471, 20.4221



16.6224, 32.0471, 27.6133

Square

The Square scheme is like the rectangle color scheme, but the four colors are evenly spaced on the color wheel.



49.2023, 32.0471, 20.4221



24.8650, 32.0471, 6.3498



17.2079, 32.0471, 54.9644



36.8366, 32.0471, 102.7491

Rectangle

The Rectangle color scheme consists of four colors that form a rectangle on the color wheel.



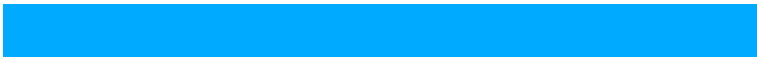
49.2023, 32.0471, 20.4221



36.4122, 32.0471, 6.2250



17.2079, 32.0471, 54.9644



25.1942, 32.0471, 103.5550

Sweetspot

The Sweet Spot groups the original color and five complimentary colors.



49.2031, 32.0489, 20.4226



76.1513, 71.7445, 73.1838



58.6358, 35.1974, 98.3108



15.7398, 14.5230, 14.5957



0.0000, 0.0000, 0.0000



20.3446, 21.4041, 23.3091

Same Dimension

The Same Dimension uses a secret algorithm to generate beautiful new colors.



49.2031, 32.0489, 20.4226



45.3384, 26.5454, 12.2717



56.7723, 48.4868, 18.9394



18.0817, 18.0160, 19.0472



21.6641, 11.1549, 1.6158



2.1324, 1.0953, 0.2784

Inverse Universe

The Inverse Universe completely reimagines the original color for something new.



49.2031, 32.0489, 20.4226



45.3384, 26.5454, 12.2717



42.7786, 48.5415, 101.7222



18.0817, 18.0160, 19.0472



21.6641, 11.1549, 1.6158



2.1324, 1.0953, 0.2784

Previews

White Background



This preview shows how the XYZ color 49.2023, 32.0471, 20.4221 looks on a white background.

Color Contrast Check

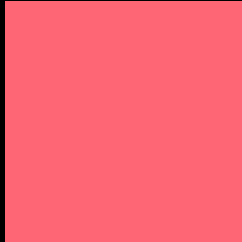
Large Text (above 18pt) WCAG AA × Fail

Any Text WCAG AA × Fail

Large Text (above 18pt) WCAG AAA × Fail

Any Text WCAG AAA × Fail

Black Background



This preview shows how the XYZ color 49.2023, 32.0471, 20.4221 looks on a black background.

Color Contrast Check

Large Text (above 18pt) WCAG AA ✓ Pass

Any Text WCAG AA ✓ Pass

Large Text (above 18pt) WCAG AAA ✓ Pass

Any Text WCAG AAA ✓ Pass

If you want to check with other color combinations, try the [Color Contrast Checker](#).

XYZ 49.2023, 32.0471, 20.4221

Background



This preview shows how black text looks on a background with the XYZ color 49.2023, 32.0471, 20.4221.



This preview shows how white text looks on a background with the XYZ color 49.2023, 32.0471,

Color Blindness Simulation

Color vision deficiency is a very complex topic, and I could not describe the different causes any better than Wikipedia does, so if you want to learn more, you should check out their [article about color blindness](#).

Dichromacy



Original Color

49.2023, 32.0471, 20.4221

Protanopia

30.4970, 32.0765, 29.7833

Deuteranopia

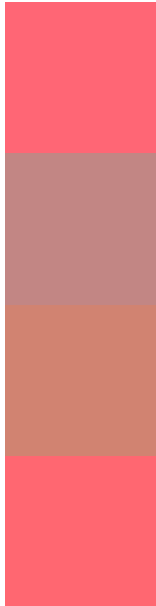
32.7766, 32.0605, 19.2126



Tritanopia

48.9047, 32.0863, 18.3676

Trichromacy



Original Color

49.2023, 32.0471, 20.4221

Protanomaly

34.9381, 30.1855, 25.8147

Deuteranomaly

37.3914, 30.9802, 19.6318

Tritanomaly

49.0709, 32.1528, 19.2426

Monochromacy



Original Color

49.2023, 32.0471, 20.4221

Achromatopsia

28.5667, 30.0544, 32.7292

Achromatomaly

33.5057, 29.0000, 27.4985

CSS Examples

Text

The CSS property to change the color of the text to XYZ 49.2023, 32.0471, 20.4221 is called "color". The color property can be set on classes, ids or directly on the HTML element.

This example shows how text in the color `rgb(255, 102, 117)` looks like.

```
.text, #text, p{  
    color:rgb(255, 102, 117)  
}
```

If you want to add a text shadow in that color use the text-shadow property, you can generate a text shadow directly with our [CSS Text Shadow Generator](#).

Here you see how black text with a 4 pixel rgb(255, 102, 117) colored shadow looks like.

```
.shadow{ text-shadow: 4px 4px 2px rgb(255, 102, 117) }
```

Border

The CSS property to change the border of an element to XYZ 49.2023, 32.0471, 20.4221 is called "border". The border property can be set on classes, ids or directly on the HTML element.

This example shows the color as border, it can be applied via the CSS property "border" or "border-color".

```
.border, #border, table{ border:4px solid rgb(255, 102, 117) }
```


If only the border color should be changed use the property `border-color`.

```
.border{ border-color:rgb(255, 102, 117) }
```

If you want to add a box shadow in that color use:

Here you see how a box with a 4 pixel `rgb(255, 102, 117)` colored shadow looks like.

```
.boxshadow{ -moz-box-shadow:4px 4px 4px  
4px rgb(255, 102, 117); -webkit-box-  
shadow:4px 4px 4px 4px rgb(255, 102, 117);  
box-shadow:4px 4px 4px 4px rgb(255, 102,  
117) }
```

Background

The CSS property to change the background color of an element to XYZ 49.2023, 32.0471, 20.4221 is called "background". The background property can be set on classes, ids or directly on the HTML element.

```
.background, #background, body{  
background: rgb(255, 102, 117) }
```

If only the background color should be changed can be used:

```
.background{ background-color: rgb(255,  
102, 117) }
```

This example shows the color as background, it is applied via the CSS property "background".

To optimize and compress your CSS code, you can use our [online CSS compressor and optimizer](#) based on csstidy. If you want to create a linear or radial gradient as background or border, check our [CSS Gradient Generator](#).

Hey! You found this booklet interesting? Support Converting Colors with the new Membership Option!

The pro membership hides all ads, plus gives you double the colors in the color bucket, and more awesome pro features!

[Learn more, Memberships starting at \\$2.50/m!](#)

**Follow me
on Twitter!**

@ConvertingColor