

Converting Colors

XYZ(49.3018, 46.6344, 49.4004)

Have a look what the booklet for
XYZ(49.3018, 46.6344, 49.4004)
contains.

XYZ(49.4763, 46.7377, 49.5936)	3
<i>Conversions</i>	4
<i>Details</i>	6
<i>Harmonies</i>	12
<i>Previews</i>	24
<i>Color Blindness Simulation</i>	28
<i>CSS Examples</i>	31

Color

**XYZ(49.4763, 46.7377,
49.5936)**

Conversions

Conversions Part 1

Format	Color
Hex	D1ADB4
RGB	209, 173, 180
RGB Percent	82%, 68%, 71%
CMY	0.1804, 0.3215, 0.2941
CMYK	0.00, 0.17, 0.14, 0.18
HSL	348°, 28%, 75%
HSV	348°, 17%, 82%
XYZ	49.4763, 46.7377, 49.5936
YIQ	184.5620, 19.2090, 9.8090

Conversions

Conversions Part 2

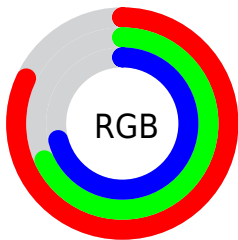
Format	Color
R _Y B	209, 173, 180
Decimal	13741492
CIE Lab	74.02, 14.19, 1.33
CIE LCh	74, 14.251, 5.350
Yxy	46.7377, 0.3393, 0.3205
Android (android.graphics.Color)	4291931572 (0xFFD1ADB4)
YUV	184.5620, -2.2491, 21.4321
Hunter-Lab	68.3650, 9.5432, 4.8451

Details

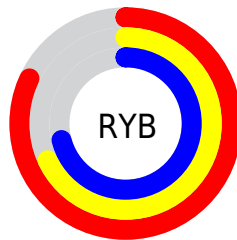
The XYZ color **49.4763, 46.7377, 49.5936** is a light color, and the websafe version is hex **CC9999**. A complement of this color would be **50.6966, 58.7507, 64.5480**, and the grayscale version is **45.8766, 48.2657, 52.5614**.

A 20% lighter version of the original color is **84.3996, 83.3548, 90.9976**, and **23.9946, 22.0771, 23.0753** is the 20% darker color. If you saturate the color by 10%, you get **44.1655, 38.6962, 39.8684**, and if you desaturate by 10%, it is **55.6250, 56.1206, 60.6273**.

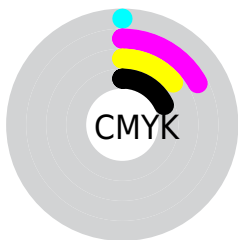
Distribution



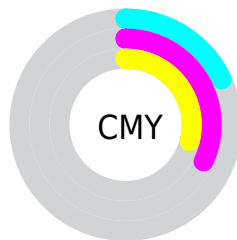
- Red (82%)
- Green (68%)
- Blue (71%)



- Red (82%)
- Yellow (68%)
- Blue (71%)



- Cyan (0%)
- Magenta (17%)
- Yellow (14%)
- Black (18%)





- Cyan (18%)
- Magenta (32%)
- Yellow (29%)

Brightness & Saturation Gradients


These gradients show how the XYZ color 49.4763, 46.7377, 49.5936 changes by changing the brightness by 10 percent. The first figure shows a shift by +10% for each color and the second figure -10%.


Similar to the brightness gradients but the following saturation gradients show a change of the XYZ color 49.4763, 46.7377, 49.5936 by changing the saturation by 10% instead.


 49.4763, 46.7377,
49.5936

 49.4763, 46.7377,
49.5936


375.1003,
373.7666, 401.7640

 35.2136, 32.8283,
34.7217


 88.5949, 85.3220,
90.9625

 23.9947, 21.9950,
23.1667


114.1815,
110.7657, 118.2966

 15.4544, 13.8532,
14.5102


144.2734,
140.8229, 150.6219

 9.2273, 8.0186,
8.3336

179.2360,
175.8781, 188.3568

 4.9480, 4.1069,
4.2183

219.4347,
216.3157, 231.9199

 2.2512, 1.7335,
1.7459

265.2347,

 0.7695, 0.4452,

262.5201, 281.7298

0.3919

317.0015,
314.8755, 338.2050

■ 0.0000, 0.0000,
0.0000

■ 49.4763, 46.7377,
49.5936

■ 49.4763, 46.7377,
49.5936

■ 44.1655, 38.6962,
39.8684

■ 55.6250, 56.1206,
60.6273

■ 39.6522, 31.9286,
31.4000

■ 62.6420, 66.8957,
73.0128

■ 35.8986, 26.3711,
24.1373

■ 70.5608, 79.1189,
86.7951

■ 32.8618, 21.9521,
18.0247

■ 78.8978, 91.8126,
101.8446

■ 30.4952, 18.5920,
13.0023

■ 80.1048, 92.2954,
108.2006

■ 28.7459, 16.2013,
9.0042

■ 27.5532, 14.6751,
5.9574

■ 26.8372, 13.8732,
3.7761

■ 26.6884, 13.7129,
3.3036

Harmonies

Analogous

The Analogous color harmony consists of three colors that are next to each other on the color wheel.



49.0214, 46.7377, 56.9625



49.4763, 46.7377, 49.5936



48.5357, 46.7377, 43.2026

Triad

The Triadic color harmony groups three colors that are evenly spaced from another and form a triangle on the color wheel.



49.4763, 46.7377, 49.5936



41.6507, 46.7377, 40.2912



42.4125, 46.7377, 64.7222

Complementary

The Complementary color scheme is a pair of colors which are on the opposite of each other on the color wheel.



49.4763, 46.7377, 49.5936



50.6966, 58.7507, 64.5480

Split Complementary

Split-complementary colors differ from the complementary color scheme. The scheme consists of three colors, the original color and two neighbors of the complement color.



40.5491, 46.7377, 59.4379



49.4763, 46.7377, 49.5936



40.1212, 46.7377, 45.2641

Square

The Square scheme is like the rectangle color scheme, but the four colors are evenly spaced on the color wheel.



49.4763, 46.7377, 49.5936



43.9680, 46.7377, 38.1700



39.7257, 46.7377, 52.2076



44.8807, 46.7377, 66.1605

Rectangle

The Rectangle color scheme consists of four colors that form a rectangle on the color wheel.



49.4763, 46.7377, 49.5936



47.2641, 46.7377, 40.2072



39.7257, 46.7377, 52.2076



41.6977, 46.7377, 63.3136

Sweetspot

The Sweet Spot groups the original color and five complimentary colors.



49.4776, 46.7398, 49.5946



89.5065, 91.4892, 99.1104



50.7568, 47.0214, 66.7231



18.9974, 19.3362, 20.9286



0.0000, 0.0000, 0.0000



20.3446, 21.4041, 23.3091

Same Dimension

The Same Dimension uses a secret algorithm to generate beautiful new colors.



49.4776, 46.7398, 49.5946



74.0975, 67.9897, 71.4115



50.9378, 50.7722, 46.6530



11.9013, 11.8453, 12.7561



16.4829, 8.4660, 2.1831



0.9499, 0.4847, 0.2712

Inverse Universe

The Inverse Universe completely reimagines the original color for something new.



49.4776, 46.7398, 49.5946



74.0975, 67.9897, 71.4115



48.9837, 53.9689, 68.1575



11.9013, 11.8453, 12.7561



16.4829, 8.4660, 2.1831



0.9499, 0.4847, 0.2712

Previews

White Background



This preview shows how the XYZ color 49.4763, 46.7377, 49.5936 looks on a white background.

Color Contrast Check

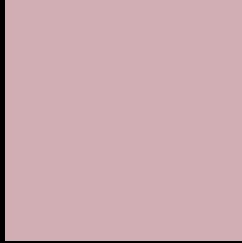
Large Text (above 18pt) WCAG AA × Fail

Any Text WCAG AA × Fail

Large Text (above 18pt) WCAG AAA × Fail

Any Text WCAG AAA × Fail

Black Background



This preview shows how the XYZ color 49.4763, 46.7377, 49.5936 looks on a black background.

Color Contrast Check

Large Text (above 18pt) WCAG AA ✓ Pass

Any Text WCAG AA ✓ Pass

Large Text (above 18pt) WCAG AAA ✓ Pass

Any Text WCAG AAA ✓ Pass

If you want to check with other color combinations, try the [Color Contrast Checker](#).

XYZ 49.4763, 46.7377, 49.5936

Background



This preview shows how black text looks on a background with the XYZ color 49.4763, 46.7377, 49.5936.



This preview shows how white text looks on a background with the XYZ color 49.4763, 46.7377,

Color Blindness Simulation

Color vision deficiency is a very complex topic, and I could not describe the different causes any better than Wikipedia does, so if you want to learn more, you should check out their [article about color blindness](#).

Dichromacy



Original Color

49.4763, 46.7377, 49.5936

Protanopia

45.2884, 46.8648, 52.5578

Deuteranopia

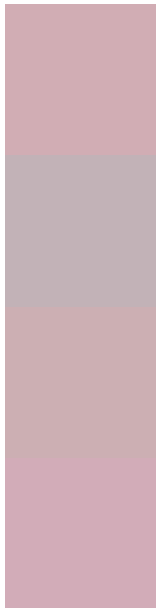
47.7494, 46.7228, 49.1496



Tritanopia

50.1938, 46.7519, 52.8329

Trichromacy



Original Color

49.4763, 46.7377, 49.5936

Protanomaly

46.7158, 46.7290, 51.3572

Deuteranomaly

48.3685, 46.7520, 49.1226

Tritanomaly

49.9826, 46.6674, 51.7207

Monochromacy



Original Color

49.4763, 46.7377, 49.5936

Achromatopsia

46.1135, 48.5150, 52.8328

Achromatomaly

47.3193, 47.9360, 51.5583

CSS Examples

Text

The CSS property to change the color of the text to XYZ 49.4763, 46.7377, 49.5936 is called "color". The color property can be set on classes, ids or directly on the HTML element.

This example shows how text in the color `rgb(209, 173, 180)` looks like.

```
.text, #text, p{  
    color:rgb(209, 173, 180)  
}
```

If you want to add a text shadow in that color use the text-shadow property, you can generate a text shadow directly with our [CSS Text Shadow Generator](#).

Here you see how black text with a 4 pixel rgb(209, 173, 180) colored shadow looks like.

```
.shadow{ text-shadow: 4px 4px 2px rgb(209, 173, 180) }
```

Border

The CSS property to change the border of an element to XYZ 49.4763, 46.7377, 49.5936 is called "border". The border property can be set on classes, ids or directly on the HTML element.

This example shows the color as border, it can be applied via the CSS property "border" or "border-color".

```
.border, #border, table{ border:4px solid rgb(209, 173, 180) }
```


If only the border color should be changed use the property `border-color`.

```
.border{ border-color:rgb(209, 173, 180) }
```

If you want to add a box shadow in that color use:

Here you see how a box with a 4 pixel `rgb(209, 173, 180)` colored shadow looks like.

```
.boxshadow{ -moz-box-shadow:4px 4px 4px  
4px rgb(209, 173, 180); -webkit-box-  
shadow:4px 4px 4px 4px rgb(209, 173, 180);  
box-shadow:4px 4px 4px 4px rgb(209, 173,  
180) }
```

Background

The CSS property to change the background color of an element to XYZ 49.4763, 46.7377, 49.5936 is called "background". The background property can be set on classes, ids or directly on the HTML element.

```
.background, #background, body{  
background: rgb(209, 173, 180) }
```

If only the background color should be changed can be used:

```
.background{ background-color: rgb(209,  
173, 180) }
```

This example shows the color as background, it is applied via the CSS property "background".

To optimize and compress your CSS code, you can use our [online CSS compressor and optimizer](#) based on csstidy. If you want to create a linear or radial gradient as background or border, check our [CSS Gradient Generator](#).

Hey! You found this booklet interesting? Support Converting Colors with the new Membership Option!

The pro membership hides all ads, plus gives you double the colors in the color bucket, and more awesome pro features!

[Learn more, Memberships starting at \\$2.50/m!](#)

**Follow me
on Twitter!**

@ConvertingColor