

Converting Colors

XYZ(49.3762, 51.1165, 49.0027)

Have a look what the booklet for
XYZ(49.3762, 51.1165, 49.0027)
contains.

XYZ(49.4722, 51.2829, 48.8861)	3
<i>Conversions</i>	4
<i>Details</i>	6
<i>Harmonies</i>	12
<i>Previews</i>	24
<i>Color Blindness Simulation</i>	28
<i>CSS Examples</i>	31

Color

**XYZ(49.4722, 51.2829,
48.8861)**

Conversions

Conversions Part 1

Format	Color
Hex	C7BCB1
RGB	199, 188, 177
RGB Percent	78%, 74%, 69%
CMY	0.2196, 0.2627, 0.3059
CMYK	0.00, 0.06, 0.11, 0.22
HSL	30°, 16%, 74%
HSV	30°, 11%, 78%
XYZ	49.4722, 51.2829, 48.8861
YIQ	190.0350, 10.0870, -1.0890

Conversions

Conversions Part 2

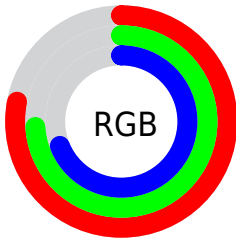
Format	Color
RYB	199, 199, 177
Decimal	13089969
CIELab	76.85, 1.99, 6.94
CIElCh	77, 7.219, 74.030
Yxy	51.2829, 0.3306, 0.3427
Android (android.graphics.Color)	4291280049 (0xFFC7BCB1)
YUV	190.0350, -6.4263, 7.8623
Hunter-Lab	71.6121, -2.0069, 9.6540

Details

The XYZ color **49.4722, 51.2829, 48.8861** is a light color, and the websafe version is hex **CCCCCC**. A complement of this color would be **46.4233, 49.4360, 61.1286**, and the grayscale version is **48.9967, 51.5483, 56.1361**.

A 20% lighter version of the original color is **88.2987, 91.8446, 90.1647**, and **23.9791, 24.8029, 22.5924** is the 20% darker color. If you saturate the color by 10%, you get **45.5799, 46.4441, 38.5060**, and if you desaturate by 10%, it is **53.8031, 56.5349, 60.8408**.

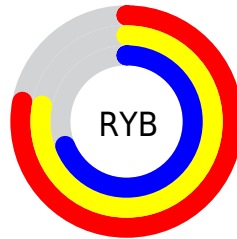
Distribution



Red (78%)

Green (74%)

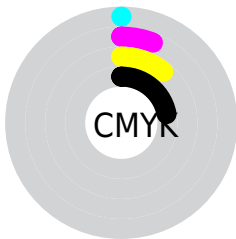
Blue (69%)



Red (78%)

Yellow (78%)

Blue (69%)

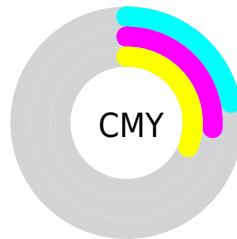


Cyan (0%)

Magenta (6%)

Yellow (11%)

Black (22%)



Cyan (22%)

Magenta (26%)

Yellow (31%)

Brightness & Saturation Gradients

These gradients show how the XYZ color 49.4722, 51.2829, 48.8861 changes by changing the brightness by 10 percent. The first figure shows a shift by +10% for each color and the second figure -10%.

Similar to the brightness gradients but the following saturation gradients show a change of the XYZ color 49.4722, 51.2829, 48.8861 by changing the saturation by 10% instead.

■ 49.4722, 51.2829,
48.8861

■ 49.4722, 51.2829,
48.8861

375.0845,
391.6619, 398.9033

■ 35.2103, 36.4338,
34.1642

■ 88.5889, 92.0728,
89.9015

■ 23.9922, 24.7694,
22.7414

114.1744,
118.7824, 117.0321

■ 15.4525, 15.9053,
14.1991

144.2651,
150.2143, 149.1359

■ 9.2260, 9.4572,
8.1190

179.2264,
186.7529, 186.6316

■ 4.9472, 5.0406,
4.0823

219.4236,
228.7825, 229.9376

■ 2.2507, 2.2711,
1.6706

265.2221,

■ 0.7693, 0.7583,

276.6877, 279.4725

0.3405

316.9873,
330.8527, 335.6549

■ 0.0000, 0.0000,
0.0000

■ 49.4722, 51.2829,
48.8861

■ 49.4722, 51.2829,
48.8861

■ 45.5799, 46.4441,
38.5060

■ 53.8031, 56.5349,
60.8408

■ 42.1065, 42.0008,
29.6304

■ 58.5830, 62.2036,
74.4292

■ 39.0371, 37.9439,
22.1890

■ 63.8269, 68.3014,
89.7118

■ 36.3541, 34.2614,
16.1046

■ 69.2893, 74.7340,
105.3809

■ 34.0383, 30.9404,
11.2924

■ 72.1015, 80.3585,
106.3183

■ 32.0688, 27.9672,
7.6580

■ 75.0737, 86.3028,
107.3090

■ 30.4216, 25.3267,
5.0937

■ 77.3634, 90.8822,
108.0723

■ 29.0693, 23.0020,
3.4715

■ 28.0662, 21.1678,
2.6065

Harmonies

Analogous

The Analogous color harmony consists of three colors that are next to each other on the color wheel.



50.6640, 51.2829, 50.7508



49.4722, 51.2829, 48.8861



48.1062, 51.2829, 48.8255

Triad

The Triadic color harmony groups three colors that are evenly spaced from another and form a triangle on the color wheel.



49.4722, 51.2829, 48.8861



46.2284, 51.2829, 57.6898



50.5992, 51.2829, 61.4476

Complementary

The Complementary color scheme is a pair of colors which are on the opposite of each other on the color wheel.



49.4722, 51.2829, 48.8861



46.4233, 49.4360, 61.1286

Split Complementary

Split-complementary colors differ from the complementary color scheme. The scheme consists of three colors, the original color and two neighbors of the complement color.



49.3851, 51.2829, 63.4925



49.4722, 51.2829, 48.8861



46.8709, 51.2829, 61.2550

Square

The Square scheme is like the rectangle color scheme, but the four colors are evenly spaced on the color wheel.



49.4722, 51.2829, 48.8861



46.2507, 51.2829, 53.7856



48.0207, 51.2829, 63.4204



51.3230, 51.2829, 57.9427

Rectangle

The Rectangle color scheme consists of four colors that form a rectangle on the color wheel.



49.4722, 51.2829, 48.8861



47.2816, 51.2829, 49.8089



48.0207, 51.2829, 63.4204



50.2339, 51.2829, 62.3357

Sweetspot

The Sweet Spot groups the original color and five complimentary colors.



49.4736, 51.2852, 48.8872



92.6349, 97.1016, 102.1392



48.3530, 47.2179, 54.1430



19.6922, 20.6204, 21.4848



0.0000, 0.0000, 0.0000



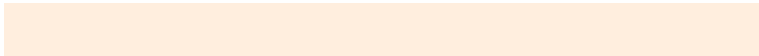
20.3446, 21.4041, 23.3091

Same Dimension

The Same Dimension uses a secret algorithm to generate beautiful new colors.



49.4736, 51.2852, 48.8872



85.1049, 87.9262, 81.4878



51.9129, 56.1638, 49.7003



11.0648, 11.4988, 11.1991



18.1346, 13.7865, 1.7053



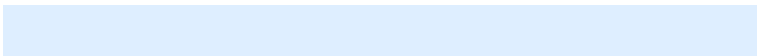
0.9311, 0.7977, 0.1049

Inverse Universe

The Inverse Universe completely reimagines the original color for something new.



46.4233, 49.4360, 61.1286



78.8250, 84.1193, 106.6899



44.1631, 44.9157, 60.3752



10.4873, 11.1487, 13.5167



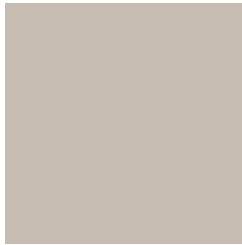
9.6138, 8.6216, 35.9018



0.5277, 0.5531, 1.7241

Previews

White Background



This preview shows how the XYZ color 49.4722, 51.2829, 48.8861 looks on a white background.

Color Contrast Check

Large Text (above 18pt) WCAG AA × Fail

Any Text WCAG AA × Fail

Large Text (above 18pt) WCAG AAA × Fail

Any Text WCAG AAA × Fail

Black Background



This preview shows how the XYZ color 49.4722, 51.2829, 48.8861 looks on a black background.

Color Contrast Check

Large Text (above 18pt) WCAG AA ✓ Pass

Any Text WCAG AA ✓ Pass

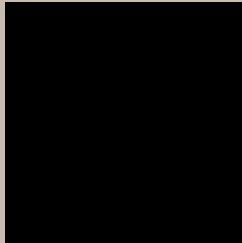
Large Text (above 18pt) WCAG AAA ✓ Pass

Any Text WCAG AAA ✓ Pass

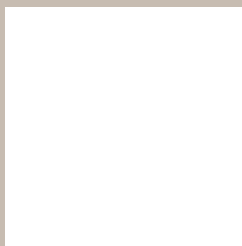
If you want to check with other color combinations, try the [Color Contrast Checker](#).

XYZ 49.4722, 51.2829, 48.8861

Background



This preview shows how black text looks on a background with the XYZ color 49.4722, 51.2829, 48.8861.

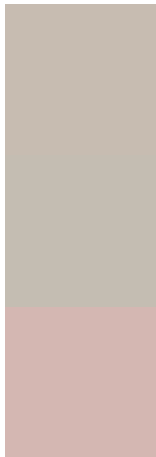


This preview shows how white text looks on a background with the XYZ color 49.4722, 51.2829,

Color Blindness Simulation

Color vision deficiency is a very complex topic, and I could not describe the different causes any better than Wikipedia does, so if you want to learn more, you should check out their [article about color blindness](#).

Dichromacy



Original Color

49.4722, 51.2829, 48.8861

Protanopia

48.9984, 51.3453, 49.4476

Deuteranopia

52.1207, 51.0784, 49.2315



Tritanopia

52.0149, 51.3780, 61.2083

Trichromacy



Original Color

49.4722, 51.2829, 48.8861

Protanomaly

49.2594, 51.4799, 49.4598

Deuteranomaly

51.1170, 51.1777, 49.3036

Tritanomaly

51.0503, 51.2969, 56.5009

Monochromacy



Original Color

49.4722, 51.2829, 48.8861

Achromatopsia

48.9429, 51.4918, 56.0745

Achromatomaly

48.9469, 51.2354, 53.2086

CSS Examples

Text

The CSS property to change the color of the text to XYZ 49.4722, 51.2829, 48.8861 is called "color". The color property can be set on classes, ids or directly on the HTML element.

This example shows how text in the color `rgb(199, 188, 177)` looks like.

```
.text, #text, p{  
    color:rgb(199, 188, 177)  
}
```

If you want to add a text shadow in that color use the text-shadow property, you can generate a text shadow directly with our [CSS Text Shadow Generator](#).

Here you see how black text with a 4 pixel rgb(199, 188, 177) colored shadow looks like.

```
.shadow{ text-shadow: 4px 4px 2px rgb(199, 188, 177) }
```

Border

The CSS property to change the border of an element to XYZ 49.4722, 51.2829, 48.8861 is called "border". The border property can be set on classes, ids or directly on the HTML element.

This example shows the color as border, it can be applied via the CSS property "border" or "border-color".

```
.border, #border, table{ border:4px solid rgb(199, 188, 177) }
```


If only the border color should be changed use the property `border-color`.

```
.border{ border-color:rgb(199, 188, 177) }
```

If you want to add a box shadow in that color use:

Here you see how a box with a 4 pixel `rgb(199, 188, 177)` colored shadow looks like.

```
.boxshadow{ -moz-box-shadow:4px 4px 4px  
4px rgb(199, 188, 177); -webkit-box-  
shadow:4px 4px 4px 4px rgb(199, 188, 177);  
box-shadow:4px 4px 4px 4px rgb(199, 188,  
177) }
```

Background

The CSS property to change the background color of an element to XYZ 49.4722, 51.2829, 48.8861 is called "background". The background property can be set on classes, ids or directly on the HTML element.

```
.background, #background, body{  
background: rgb(199, 188, 177) }
```

If only the background color should be changed can be used:

```
.background{ background-color: rgb(199,  
188, 177) }
```

This example shows the color as background, it is applied via the CSS property "background".

To optimize and compress your CSS code, you can use our [online CSS compressor and optimizer](#) based on csstidy. If you want to create a linear or radial gradient as background or border, check our [CSS Gradient Generator](#).

Hey! You found this booklet interesting? Support Converting Colors with the new Membership Option!

The pro membership hides all ads, plus gives you double the colors in the color bucket, and more awesome pro features!

[Learn more, Memberships starting at \\$2.50/m!](#)

**Follow me
on Twitter!**

@ConvertingColor