

Converting Colors

XYZ(49.4342, 50.9622, 45.4941)

Have a look what the booklet for
XYZ(49.4342, 50.9622, 45.4941)
contains.

XYZ(49.3831, 50.9995, 45.2713)	3
<i>Conversions</i>	4
<i>Details</i>	6
<i>Harmonies</i>	12
<i>Previews</i>	24
<i>Color Blindness Simulation</i>	28
<i>CSS Examples</i>	31

Color

**XYZ(49.3831, 50.9995,
45.2713)**

Conversions

Conversions Part 1

Format	Color
Hex	CABBA4
RGB	202, 187, 170
RGB Percent	79%, 73%, 67%
CMY	0.2078, 0.2666, 0.3333
CMYK	0.00, 0.07, 0.16, 0.21
HSL	32°, 23%, 73%
HSV	32°, 16%, 79%
XYZ	49.3831, 50.9995, 45.2713
YIQ	189.5470, 14.3970, -2.1070

Conversions

Conversions Part 2

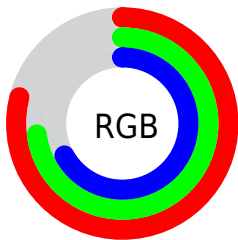
Format	Color
RYB	198, 202, 170
Decimal	13286314
CIELab	76.68, 2.48, 10.52
CIElCh	77, 10.806, 76.715
Yxy	50.9995, 0.3390, 0.3501
Android (android.graphics.Color)	4291476394 (0xFFCABBAA)
YUV	189.5470, -9.6367, 10.9213
Hunter-Lab	71.4139, -1.5407, 12.4042

Details

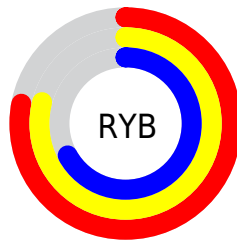
The XYZ color **49.3831, 50.9995, 45.2713** is a light color, and the websafe version is hex **CCCCCC**. A complement of this color would be **44.5869, 47.5070, 62.6972**, and the grayscale version is **48.7321, 51.2699, 55.8330**.

A 20% lighter version of the original color is **86.8812, 90.7974, 84.1807**, and **24.0079, 24.6541, 20.6329** is the 20% darker color. If you saturate the color by 10%, you get **45.6751, 46.4099, 35.3210**, and if you desaturate by 10%, it is **53.5199, 55.9759, 56.8143**.

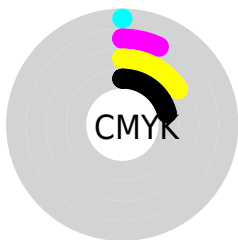
Distribution



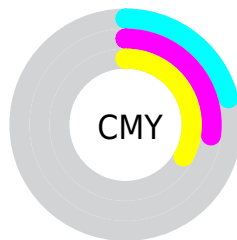
- Red (79%)
- Green (73%)
- Blue (67%)



- Red (78%)
- Yellow (79%)
- Blue (67%)



- Cyan (0%)
- Magenta (7%)
- Yellow (16%)
- Black (21%)



- Cyan (21%)
- Magenta (27%)
- Yellow (33%)

Brightness & Saturation Gradients

These gradients show how the XYZ color 49.3831, 50.9995, 45.2713 changes by changing the brightness by 10 percent. The first figure shows a shift by +10% for each color and the second figure -10%.

Similar to the brightness gradients but the following saturation gradients show a change of the XYZ color 49.3831, 50.9995, 45.2713 by changing the saturation by 10% instead.

■ 49.3831, 50.9995,
45.2713

■ 49.3831, 50.9995,
45.2713

374.7405,
390.5618, 384.0633

■ 35.1393, 36.2082,
31.3267

■ 88.4575, 91.6540,
84.4501

■ 23.9372, 24.5950,
20.5872

114.0187,
118.2861, 110.5214

■ 15.4115, 15.7756,
12.6343

144.0832,
149.6338, 141.4720

■ 9.1969, 9.3655,
7.0494

179.0161,
186.0816, 177.7204

■ 4.9280, 4.9803,
3.4141

219.1830,
228.0140, 219.6852

■ 2.2394, 2.2357,
1.3098

264.9491,

■ 0.7634, 0.7394,

275.8152, 267.7850

0.0698

316.6799,
329.8697, 322.4382

■ 0.0000, 0.0000,
0.0000

■ 49.3831, 50.9995,
45.2713

■ 49.3831, 50.9995,
45.2713

■ 45.6751, 46.4099,
35.3210

■ 53.5199, 55.9759,
56.8143

■ 42.3759, 42.1898,
26.8891

■ 58.0964, 61.3422,
70.0136

■ 39.4698, 38.3307,
19.8998

■ 63.1281, 67.1102,
84.9329

■ 36.9386, 34.8207,
14.2698

■ 68.6285, 73.2890,
101.6320

■ 34.7621, 31.6475,
9.9068

■ 71.9257, 78.8135,
106.0294

■ 32.9178, 28.7975,
6.7073

■ 74.6983, 84.3587,
106.9536

■ 31.3802, 26.2556,
4.5506

■ 77.6171, 90.1964,
107.9265

■ 30.1179, 24.0043,
3.2872

■ 78.1672, 91.2966,
108.1099

■ 29.6504, 23.1429,
2.9043

Harmonies

Analogous

The Analogous color harmony consists of three colors that are next to each other on the color wheel.



51.2209, 50.9995, 47.7260



49.3831, 50.9995, 45.2713



47.3509, 50.9995, 45.4237

Triad

The Triadic color harmony groups three colors that are evenly spaced from another and form a triangle on the color wheel.



49.3831, 50.9995, 45.2713



44.8028, 50.9995, 58.8333



51.3938, 50.9995, 63.6177

Complementary

The Complementary color scheme is a pair of colors which are on the opposite of each other on the color wheel.



49.3831, 50.9995, 45.2713



44.5869, 47.5070, 62.6972

Split Complementary

Split-complementary colors differ from the complementary color scheme. The scheme consists of three colors, the original color and two neighbors of the complement color.



49.6137, 50.9995, 67.0335



49.3831, 50.9995, 45.2713



45.8261, 50.9995, 64.1410

Square

The Square scheme is like the rectangle color scheme, but the four colors are evenly spaced on the color wheel.



49.3831, 50.9995, 45.2713



44.7450, 50.9995, 52.9809



47.5751, 50.9995, 67.2315



52.4036, 50.9995, 58.1591

Rectangle

The Rectangle color scheme consists of four colors that form a rectangle on the color wheel.



49.3831, 50.9995, 45.2713



46.1597, 50.9995, 46.9796



47.5751, 50.9995, 67.2315



50.8634, 50.9995, 65.0591

Sweetspot

The Sweet Spot groups the original color and five complimentary colors.



49.3845, 51.0018, 45.2724



91.1880, 95.4527, 97.8195



47.5386, 44.8292, 52.3055



19.4051, 20.2970, 20.6166



0.0000, 0.0000, 0.0000



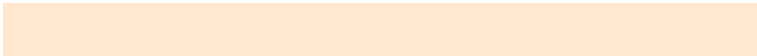
20.3446, 21.4041, 23.3091

Same Dimension

The Same Dimension uses a secret algorithm to generate beautiful new colors.



49.3845, 51.0018, 45.2724



81.3874, 83.6227, 70.5947



52.5896, 57.6259, 46.3820



11.6976, 12.1841, 11.8147



19.1695, 15.0720, 1.8988



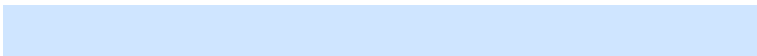
1.0645, 0.9287, 0.1232

Inverse Universe

The Inverse Universe completely reimagines the original color for something new.



44.5869, 47.5070, 62.6972



71.7464, 76.6003, 105.6116



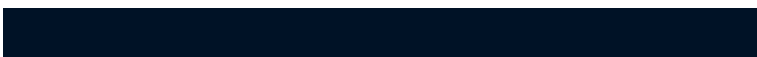
41.7291, 41.6200, 61.7115



11.0279, 11.6963, 14.2467



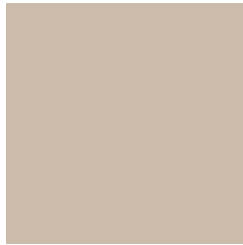
9.5613, 8.1465, 37.0248



0.5690, 0.5717, 1.9353

Previews

White Background



This preview shows how the XYZ color 49.3831, 50.9995, 45.2713 looks on a white background.

Color Contrast Check

Large Text (above 18pt) WCAG AA × Fail

Any Text WCAG AA × Fail

Large Text (above 18pt) WCAG AAA × Fail

Any Text WCAG AAA × Fail

Black Background



This preview shows how the XYZ color 49.3831, 50.9995, 45.2713 looks on a black background.

Color Contrast Check

Large Text (above 18pt) WCAG AA ✓ Pass

Any Text WCAG AA ✓ Pass

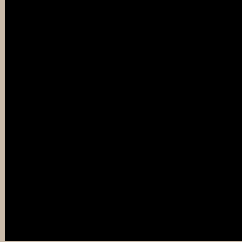
Large Text (above 18pt) WCAG AAA ✓ Pass

Any Text WCAG AAA ✓ Pass

If you want to check with other color combinations, try the [Color Contrast Checker](#).

XYZ 49.3831, 50.9995, 45.2713

Background



This preview shows how black text looks on a background with the XYZ color 49.3831, 50.9995, 45.2713.



This preview shows how white text looks on a background with the XYZ color 49.3831, 50.9995,

Color Blindness Simulation

Color vision deficiency is a very complex topic, and I could not describe the different causes any better than Wikipedia does, so if you want to learn more, you should check out their [article about color blindness](#).

Dichromacy



Original Color

49.3831, 50.9995, 45.2713

Protanopia

48.5742, 51.2058, 45.8516

Deuteranopia

51.8102, 50.6923, 45.5820



Tritanopia

52.4651, 51.0200, 59.9060

Trichromacy



Original Color

49.3831, 50.9995, 45.2713

Protanomaly

48.8871, 51.0488, 45.8049

Deuteranomaly

51.0695, 50.9229, 45.6655

Tritanomaly

51.2870, 50.8480, 54.1252

Monochromacy



Original Color

49.3831, 50.9995, 45.2713

Achromatopsia

48.9429, 51.4918, 56.0745

Achromatomaly

48.9930, 51.2834, 52.1162

CSS Examples

Text

The CSS property to change the color of the text to XYZ 49.3831, 50.9995, 45.2713 is called "color". The color property can be set on classes, ids or directly on the HTML element.

This example shows how text in the color `rgb(202, 187, 170)` looks like.

```
.text, #text, p{  
    color:rgb(202, 187, 170)  
}
```

If you want to add a text shadow in that color use the text-shadow property, you can generate a text shadow directly with our [CSS Text Shadow Generator](#).

Here you see how black text with a 4 pixel rgb(202, 187, 170) colored shadow looks like.

```
.shadow{ text-shadow: 4px 4px 2px rgb(202, 187, 170) }
```

Border

The CSS property to change the border of an element to XYZ 49.3831, 50.9995, 45.2713 is called "border". The border property can be set on classes, ids or directly on the HTML element.

This example shows the color as border, it can be applied via the CSS property "border" or "border-color".

```
.border, #border, table{ border:4px solid rgb(202, 187, 170) }
```


If only the border color should be changed use the property `border-color`.

```
.border{ border-color:rgb(202, 187, 170) }
```

If you want to add a box shadow in that color use:

Here you see how a box with a 4 pixel `rgb(202, 187, 170)` colored shadow looks like.

```
.boxshadow{ -moz-box-shadow:4px 4px 4px  
4px rgb(202, 187, 170); -webkit-box-  
shadow:4px 4px 4px 4px rgb(202, 187, 170);  
box-shadow:4px 4px 4px 4px rgb(202, 187,  
170) }
```

Background

The CSS property to change the background color of an element to XYZ 49.3831, 50.9995, 45.2713 is called "background". The background property can be set on classes, ids or directly on the HTML element.

```
.background, #background, body{  
background: rgb(202, 187, 170) }
```

If only the background color should be changed can be used:

```
.background{ background-color: rgb(202,  
187, 170) }
```

This example shows the color as background, it is applied via the CSS property "background".

To optimize and compress your CSS code, you can use our [online CSS compressor and optimizer](#) based on csstidy. If you want to create a linear or radial gradient as background or border, check our [CSS Gradient Generator](#).

Hey! You found this booklet interesting? Support Converting Colors with the new Membership Option!

The pro membership hides all ads, plus gives you double the colors in the color bucket, and more awesome pro features!

[Learn more, Memberships starting at \\$2.50/m!](#)

**Follow me
on Twitter!**

@ConvertingColor