

Converting Colors

XYZ(49.4785, 49.8407, 45.4657)

Have a look what the booklet for
XYZ(49.4785, 49.8407, 45.4657)
contains.

XYZ(49.4610, 49.7864, 45.5309)	3
<i>Conversions</i>	4
<i>Details</i>	6
<i>Harmonies</i>	12
<i>Previews</i>	24
<i>Color Blindness Simulation</i>	28
<i>CSS Examples</i>	31

Color

**XYZ(49.4610, 49.7864,
45.5309)**

Conversions

Conversions Part 1

Format	Color
Hex	CDB7AB
RGB	205, 183, 171
RGB Percent	80%, 72%, 67%
CMY	0.1961, 0.2823, 0.3294
CMYK	0.00, 0.11, 0.17, 0.20
HSL	21°, 25%, 74%
HSV	21°, 17%, 80%
XYZ	49.4610, 49.7864, 45.5309
YIQ	188.2100, 16.9640, 0.9320

Conversions

Conversions Part 2

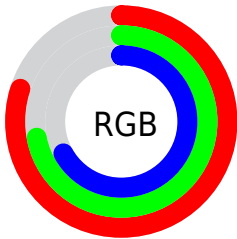
Format	Color
R_{YB}	205, 190, 171
Decimal	13481899
CIE Lab	75.94, 5.89, 8.95
CIE LCh	76, 10.717, 56.677
Yxy	49.7864, 0.3416, 0.3439
Android (android.graphics.Color)	4291671979 (0xFFCDB7AB)
YUV	188.2100, -8.4845, 14.7248
Hunter-Lab	70.5595, 1.6464, 11.1327

Details

The XYZ color **49.4610, 49.7864, 45.5309** is a light color, and the websafe version is hex **CCCCCC**. A complement of this color would be **46.8836, 51.2044, 65.1704**, and the grayscale version is **47.9604, 50.4581, 54.9489**.

A 20% lighter version of the original color is **85.8340, 88.4840, 84.5067**, and **23.8901, 23.7812, 20.7839** is the 20% darker color. If you saturate the color by 10%, you get **45.0490, 43.8505, 35.1559**, and if you desaturate by 10%, it is **54.4366, 56.3635, 57.5901**.

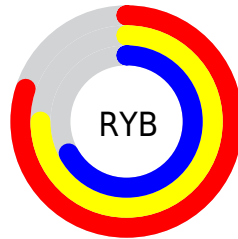
Distribution



Red (80%)

Green (72%)

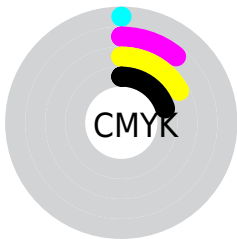
Blue (67%)



Red (80%)

Yellow (75%)

Blue (67%)

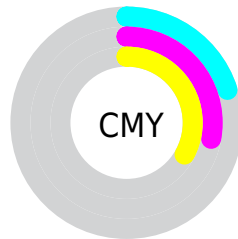


Cyan (0%)

Magenta (11%)

Yellow (17%)

Black (20%)



Cyan (20%)


Magenta (28%)


Yellow (33%)

Brightness & Saturation Gradients

These gradients show how the XYZ color 49.4610, 49.7864, 45.5309 changes by changing the brightness by 10 percent. The first figure shows a shift by +10% for each color and the second figure -10%.


Similar to the brightness gradients but the following saturation gradients show a change of the XYZ color 49.4610, 49.7864, 45.5309 by changing the saturation by 10% instead.


 49.4610, 49.7864,
45.5309

 49.4610, 49.7864,
45.5309


375.0413,
385.8300, 385.1421

 35.2014, 35.2437,
31.5298


 88.5724, 89.8583,
84.8434

 23.9853, 23.8507,
20.7408

114.1548,
116.1563, 110.9919

 15.4474, 15.2229,
12.7453


144.2422,
147.1416, 142.0266

 9.2223, 8.9760,
7.1247

179.1999,
183.1984, 178.3660

 4.9447, 4.7255,
3.4606

219.3934,
224.7113, 220.4287

 2.2493, 2.0871,
1.3344

265.1878,

 0.7685, 0.6574,

272.0646, 268.6333

0.0897

316.9487,
325.6427, 323.3983

■ 0.0000, 0.0000,
0.0000

■ 49.4610, 49.7864,
45.5309

■ 49.4610, 49.7864,
45.5309

■ 45.0490, 43.8505,
35.1559

■ 54.4366, 56.3635,
57.5901

■ 41.1756, 38.5295,
26.3863

■ 59.9915, 63.5941,
71.4013

■ 37.8196, 33.8047,
19.1415

■ 66.1460, 71.4982,
87.0322

■ 34.9570, 29.6540,
13.3328

■ 72.9180, 80.0934,
104.5462

■ 32.5614, 26.0540,
8.8621

■ 77.2006, 88.1465,
107.5528

■ 30.6038, 22.9792,
5.6188

■ 78.9870, 91.7192,
108.1483

■ 29.0511, 20.4016,
3.4743

■ 27.8627, 18.2893,
2.2627

■ 27.5189, 17.6629,
1.9589

Harmonies

Analogous

The Analogous color harmony consists of three colors that are next to each other on the color wheel.



50.8345, 49.7864, 49.4209



49.4610, 49.7864, 45.5309



47.5433, 49.7864, 43.9566

Triad

The Triadic color harmony groups three colors that are evenly spaced from another and form a triangle on the color wheel.



49.4610, 49.7864, 45.5309



43.5904, 49.7864, 53.5742



49.0651, 49.7864, 64.6389

Complementary

The Complementary color scheme is a pair of colors which are on the opposite of each other on the color wheel.



49.4610, 49.7864, 45.5309



46.8836, 51.2044, 65.1704

Split Complementary

Split-complementary colors differ from the complementary color scheme. The scheme consists of three colors, the original color and two neighbors of the complement color.



47.0983, 49.7864, 65.9429



49.4610, 49.7864, 45.5309



43.9723, 49.7864, 59.2966

Square

The Square scheme is like the rectangle color scheme, but the four colors are evenly spaced on the color wheel.



49.4610, 49.7864, 45.5309



44.1845, 49.7864, 48.3904



45.2426, 49.7864, 63.9250



50.6014, 49.7864, 60.4762

Rectangle

The Rectangle color scheme consists of four colors that form a rectangle on the color wheel.



49.4610, 49.7864, 45.5309



46.2273, 49.7864, 44.3439



45.2426, 49.7864, 63.9250



48.4308, 49.7864, 65.4382

Sweetspot

The Sweet Spot groups the original color and five complimentary colors.



49.4624, 49.7886, 45.5320



90.4894, 94.0555, 97.5866



49.3771, 45.9603, 56.7799



19.2355, 19.9577, 20.5600



0.0000, 0.0000, 0.0000



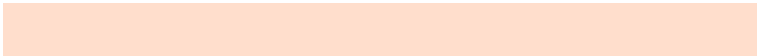
20.3446, 21.4041, 23.3091

Same Dimension

The Same Dimension uses a secret algorithm to generate beautiful new colors.



49.4624, 49.7886, 45.5320



78.2620, 77.8654, 68.0314



53.1591, 57.1821, 46.7642



11.5310, 11.8509, 11.7591



17.2129, 11.1588, 1.2466



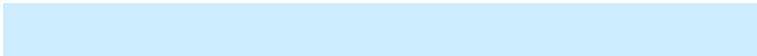
0.9590, 0.7178, 0.0880

Inverse Universe

The Inverse Universe completely reimagines the original color for something new.



46.8836, 51.2044, 65.1704



73.2343, 80.6222, 106.3095



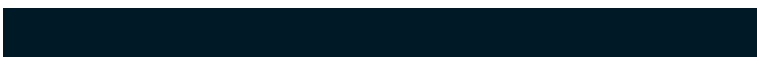
43.3596, 44.1563, 63.9957



11.1970, 12.0345, 14.3031



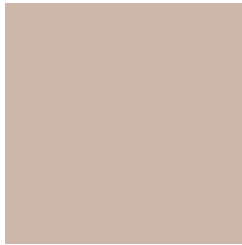
12.1417, 13.3075, 37.8849



0.6961, 0.8260, 1.9777

Previews

White Background



This preview shows how the XYZ color 49.4610, 49.7864, 45.5309 looks on a white background.

Color Contrast Check

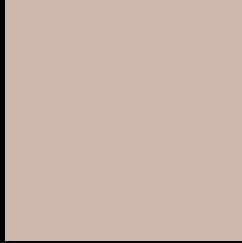
Large Text (above 18pt) WCAG AA × Fail

Any Text WCAG AA × Fail

Large Text (above 18pt) WCAG AAA × Fail

Any Text WCAG AAA × Fail

Black Background



This preview shows how the XYZ color 49.4610, 49.7864, 45.5309 looks on a black background.

Color Contrast Check

Large Text (above 18pt) WCAG AA ✓ Pass

Any Text WCAG AA ✓ Pass

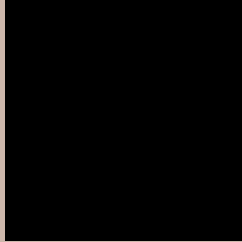
Large Text (above 18pt) WCAG AAA ✓ Pass

Any Text WCAG AAA ✓ Pass

If you want to check with other color combinations, try the [Color Contrast Checker](#).

XYZ 49.4610, 49.7864, 45.5309

Background



This preview shows how black text looks on a background with the XYZ color 49.4610, 49.7864, 45.5309.



This preview shows how white text looks on a background with the XYZ color 49.4610, 49.7864,

45.5309.

Color Blindness Simulation

Color vision deficiency is a very complex topic, and I could not describe the different causes any better than Wikipedia does, so if you want to learn more, you should check out their [article about color blindness](#).

Dichromacy



Original Color

49.4610, 49.7864, 45.5309

Protanopia

47.5613, 50.0271, 46.6846

Deuteranopia

50.7385, 49.8369, 45.4734



Tritanopia

52.0713, 49.9475, 57.9353

Trichromacy



Original Color

49.4610, 49.7864, 45.5309

Protanomaly

48.2940, 50.1021, 46.1550

Deuteranomaly

50.3731, 49.9515, 45.5147

Tritanomaly

51.1189, 49.8583, 53.3837

Monochromacy



Original Color

49.4610, 49.7864, 45.5309

Achromatopsia

47.7994, 50.2886, 54.7643

Achromatomaly

48.2505, 49.9645, 51.3570

CSS Examples

Text

The CSS property to change the color of the text to XYZ 49.4610, 49.7864, 45.5309 is called "color". The color property can be set on classes, ids or directly on the HTML element.

This example shows how text in the color `rgb(205, 183, 171)` looks like.

```
.text, #text, p{  
    color:rgb(205, 183, 171)  
}
```

If you want to add a text shadow in that color use the text-shadow property, you can generate a text shadow directly with our [CSS Text Shadow Generator](#).

Here you see how black text with a 4 pixel rgb(205, 183, 171) colored shadow looks like.

```
.shadow{ text-shadow: 4px 4px 2px rgb(205, 183, 171) }
```

Border

The CSS property to change the border of an element to XYZ 49.4610, 49.7864, 45.5309 is called "border". The border property can be set on classes, ids or directly on the HTML element.

This example shows the color as border, it can be applied via the CSS property "border" or "border-color".

```
.border, #border, table{ border:4px solid rgb(205, 183, 171) }
```


If only the border color should be changed use the property `border-color`.

```
.border{ border-color:rgb(205, 183, 171) }
```

If you want to add a box shadow in that color use:

Here you see how a box with a 4 pixel `rgb(205, 183, 171)` colored shadow looks like.

```
.boxshadow{ -moz-box-shadow:4px 4px 4px  
4px rgb(205, 183, 171); -webkit-box-  
shadow:4px 4px 4px 4px rgb(205, 183, 171);  
box-shadow:4px 4px 4px 4px rgb(205, 183,  
171) }
```

Background

The CSS property to change the background color of an element to XYZ 49.4610, 49.7864, 45.5309 is called "background". The background property can be set on classes, ids or directly on the HTML element.

```
.background, #background, body{  
background: rgb(205, 183, 171) }
```

If only the background color should be changed can be used:

```
.background{ background-color: rgb(205,  
183, 171) }
```

This example shows the color as background, it is applied via the CSS property "background".

To optimize and compress your CSS code, you can use our [online CSS compressor and optimizer](#) based on csstidy. If you want to create a linear or radial gradient as background or border, check our [CSS Gradient Generator](#).

Hey! You found this booklet interesting? Support Converting Colors with the new Membership Option!

The pro membership hides all ads, plus gives you double the colors in the color bucket, and more awesome pro features!

[Learn more, Memberships starting at \\$2.50/m!](#)

**Follow me
on Twitter!**

@ConvertingColor