

Converting Colors

XYZ(49.5375, 48.2781, 41.6278)

Have a look what the booklet for
XYZ(49.5375, 48.2781, 41.6278)
contains.

XYZ(49.7726, 48.5182, 41.8636)	3
<i>Conversions</i>	4
<i>Details</i>	6
<i>Harmonies</i>	12
<i>Previews</i>	24
<i>Color Blindness Simulation</i>	28
<i>CSS Examples</i>	31

Color

**XYZ(49.7726, 48.5182,
41.8636)**

Conversions

Conversions Part 1

Format	Color
Hex	D4B2A4
RGB	212, 178, 164
RGB Percent	83%, 70%, 64%
CMY	0.1686, 0.3019, 0.3569
CMYK	0.00, 0.16, 0.23, 0.17
HSL	18°, 36%, 74%
HSV	18°, 23%, 83%
XYZ	49.7726, 48.5182, 41.8636
YIQ	186.5700, 24.7580, 2.8540

Conversions

Conversions Part 2

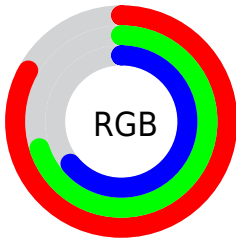
Format	Color
R _{YB}	212, 184, 164
Decimal	13939364
CIE Lab	75.15, 10.12, 11.73
CIE LCh	75, 15.491, 49.193
Yxy	48.5182, 0.3551, 0.3462
Android (android.graphics.Color)	4292129444 (0xFFD4B2A4)
YUV	186.5700, -11.1270, 22.3021
Hunter-Lab	69.6550, 5.6525, 13.1244

Details

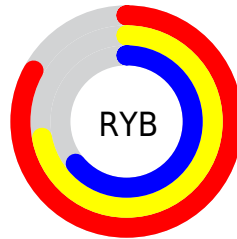
The XYZ color **49.7726, 48.5182, 41.8636** is a light color, and the websafe version is hex **CC9999**. A complement of this color would be **47.3871, 53.0326, 70.0263**, and the grayscale version is **47.0439, 49.4938, 53.8988**.

A 20% lighter version of the original color is **83.4490, 85.2201, 79.0687**, and **24.1629, 23.0052, 18.4962** is the 20% darker color. If you saturate the color by 10%, you get **45.1899, 42.1653, 31.6647**, and if you desaturate by 10%, it is **55.0041, 55.6572, 53.8544**.

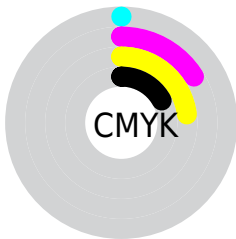
Distribution



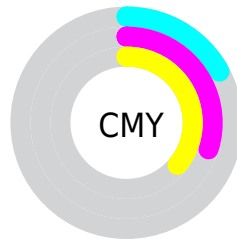
- Red (83%)
- Green (70%)
- Blue (64%)



- Red (83%)
- Yellow (72%)
- Blue (64%)



- Cyan (0%)
- Magenta (16%)
- Yellow (23%)
- Black (17%)




- Cyan (17%)
- Magenta (30%)
- Yellow (36%)

Brightness & Saturation Gradients


These gradients show how the XYZ color 49.7726, 48.5182, 41.8636 changes by changing the brightness by 10 percent. The first figure shows a shift by +10% for each color and the second figure -10%.


Similar to the brightness gradients but the following saturation gradients show a change of the XYZ color 49.7726, 48.5182, 41.8636 by changing the saturation by 10% instead.


 49.7726, 48.5182,
41.8636


 49.7726, 48.5182,
41.8636


376.2427,
380.8425, 369.7002

 35.4498, 34.2374,
28.6697


 89.0317, 87.9755,
79.2610

 24.1777, 23.0761,
18.5877


 114.6987,
113.9207, 104.3016

 15.5909, 14.6497,
11.1990


144.8778,
144.5230, 134.1282

 9.3242, 8.5739,
6.0850

179.9344,
180.1666, 169.1594

 5.0120, 4.4643,
2.8272

220.2339,
221.2359, 209.8136

 2.2891, 1.9365,
1.0071

266.1415,

 0.7891, 0.5702,

268.1155, 256.5095

0.0000

318.0227,
321.1895, 309.6655

■ 0.0000, 0.0000,
0.0000

■ 49.7726, 48.5182,
41.8636

■ 49.7726, 48.5182,
41.8636

■ 45.1899, 42.1653,
31.6647

■ 55.0041, 55.6572,
53.8544

■ 41.2258, 36.5646,
23.1679

■ 60.9053, 63.6017,
67.7148

■ 37.8534, 31.6894,
16.2802

■ 67.5008, 72.3784,
83.5218

■ 35.0422, 27.5088,
10.8984

■ 74.8127, 82.0109,
101.3469

■ 32.7587, 23.9895,
6.9070

■ 80.3518, 91.5177,
108.0374

■ 30.9652, 21.0952,
4.1737

■ 80.9615, 92.7371,
108.2407

■ 29.6181, 18.7855,
2.5396

■ 28.8661, 17.4263,
1.8422

Harmonies

Analogous

The Analogous color harmony consists of three colors that are next to each other on the color wheel.



51.4610, 48.5182, 47.8569



49.7726, 48.5182, 41.8636



47.1455, 48.5182, 38.9206

Triad

The Triadic color harmony groups three colors that are evenly spaced from another and form a triangle on the color wheel.



49.7726, 48.5182, 41.8636



40.9618, 48.5182, 49.9526



47.9317, 48.5182, 68.9983

Complementary

The Complementary color scheme is a pair of colors which are on the opposite of each other on the color wheel.



49.7726, 48.5182, 41.8636



47.3871, 53.0326, 70.0263

Split Complementary

Split-complementary colors differ from the complementary color scheme. The scheme consists of three colors, the original color and two neighbors of the complement color.



45.0998, 48.5182, 69.7072



49.7726, 48.5182, 41.8636



41.1529, 48.5182, 58.1321

Square

The Square scheme is like the rectangle color scheme, but the four colors are evenly spaced on the color wheel.



49.7726, 48.5182, 41.8636



42.1082, 48.5182, 43.2622



42.6413, 48.5182, 65.5571



50.3684, 48.5182, 63.7094

Rectangle

The Rectangle color scheme consists of four colors that form a rectangle on the color wheel.



49.7726, 48.5182, 41.8636



45.2491, 48.5182, 38.8583



42.6413, 48.5182, 65.5571



46.9921, 48.5182, 69.7992

Sweetspot

The Sweet Spot groups the original color and five complimentary colors.



49.7739, 48.5204, 41.8646



88.4067, 91.1007, 93.1604



50.6665, 44.6442, 59.6155



18.8053, 19.3413, 19.6644



0.0000, 0.0000, 0.0000



20.3446, 21.4041, 23.3091

Same Dimension

The Same Dimension uses a secret algorithm to generate beautiful new colors.



49.7739, 48.5204, 41.8646



72.2474, 69.0686, 56.0617



54.8794, 58.7313, 43.5664



12.7155, 13.0053, 13.0008



17.8960, 10.9092, 1.1625



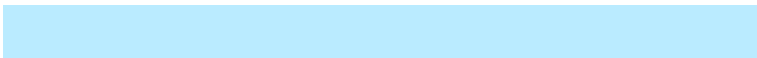
1.1505, 0.8001, 0.0938

Inverse Universe

The Inverse Universe completely reimagines the original color for something new.



47.3871, 53.0326, 70.0263



68.0195, 77.0445, 105.8938



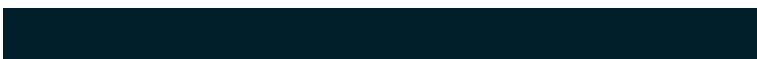
42.4075, 43.0735, 68.3665



12.4719, 13.4673, 15.8796



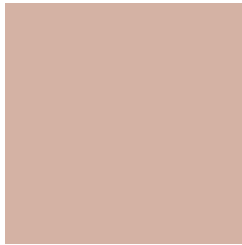
14.1742, 16.6101, 40.9122



0.9247, 1.1415, 2.4909

Previews

White Background



This preview shows how the XYZ color 49.7726, 48.5182, 41.8636 looks on a white background.

Color Contrast Check

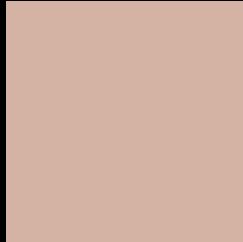
Large Text (above 18pt) WCAG AA × Fail

Any Text WCAG AA × Fail

Large Text (above 18pt) WCAG AAA × Fail

Any Text WCAG AAA × Fail

Black Background



This preview shows how the XYZ color 49.7726, 48.5182, 41.8636 looks on a black background.

Color Contrast Check

Large Text (above 18pt) WCAG AA ✓ Pass

Any Text WCAG AA ✓ Pass

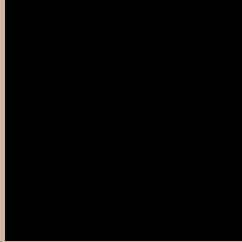
Large Text (above 18pt) WCAG AAA ✓ Pass

Any Text WCAG AAA ✓ Pass

If you want to check with other color combinations, try the [Color Contrast Checker](#).

XYZ 49.7726, 48.5182, 41.8636

Background



This preview shows how black text looks on a background with the XYZ color 49.7726, 48.5182, 41.8636.



This preview shows how white text looks on a background with the XYZ color 49.7726, 48.5182,

41.8636.

Color Blindness Simulation

Color vision deficiency is a very complex topic, and I could not describe the different causes any better than Wikipedia does, so if you want to learn more, you should check out their [article about color blindness](#).

Dichromacy



Original Color

49.7726, 48.5182, 41.8636

Protanopia

46.3163, 48.8254, 43.5423

Deuteranopia

49.4852, 48.3700, 41.8502



Tritanopia

52.2375, 48.3500, 54.1562

Trichromacy



Original Color

49.7726, 48.5182, 41.8636

Protanomaly

47.4303, 48.4884, 42.9358

Deuteranomaly

49.4852, 48.3700, 41.8502

Tritanomaly

51.1982, 48.2108, 49.2550

Monochromacy



Original Color

49.7726, 48.5182, 41.8636

Achromatopsia

47.2335, 49.6933, 54.1160

Achromatomaly

48.0421, 49.2714, 49.6261

CSS Examples

Text

The CSS property to change the color of the text to XYZ 49.7726, 48.5182, 41.8636 is called "color". The color property can be set on classes, ids or directly on the HTML element.

This example shows how text in the color rgb(212, 178, 164) looks like.

```
.text, #text, p{  
    color:rgb(212, 178, 164)  
}
```

If you want to add a text shadow in that color use the text-shadow property, you can generate a text shadow directly with our [CSS Text Shadow Generator](#).

Here you see how black text with a 4 pixel rgb(212, 178, 164) colored shadow looks like.

```
.shadow{ text-shadow: 4px 4px 2px rgb(212, 178, 164) }
```

Border

The CSS property to change the border of an element to XYZ 49.7726, 48.5182, 41.8636 is called "border". The border property can be set on classes, ids or directly on the HTML element.

This example shows the color as border, it can be applied via the CSS property "border" or "border-color".

```
.border, #border, table{ border:4px solid rgb(212, 178, 164) }
```


If only the border color should be changed use the property `border-color`.

```
.border{ border-color:rgb(212, 178, 164) }
```

If you want to add a box shadow in that color use:

Here you see how a box with a 4 pixel `rgb(212, 178, 164)` colored shadow looks like.

```
.boxshadow{ -moz-box-shadow:4px 4px 4px  
4px rgb(212, 178, 164); -webkit-box-  
shadow:4px 4px 4px 4px rgb(212, 178, 164);  
box-shadow:4px 4px 4px 4px rgb(212, 178,  
164) }
```

Background

The CSS property to change the background color of an element to XYZ 49.7726, 48.5182, 41.8636 is called "background". The background property can be set on classes, ids or directly on the HTML element.

```
.background, #background, body{  
background: rgb(212, 178, 164) }
```

If only the background color should be changed can be used:

```
.background{ background-color: rgb(212,  
178, 164) }
```

This example shows the color as background, it is applied via the CSS property "background".

To optimize and compress your CSS code, you can use our [online CSS compressor and optimizer](#) based on csstidy. If you want to create a linear or radial gradient as background or border, check our [CSS Gradient Generator](#).

Hey! You found this booklet interesting? Support Converting Colors with the new Membership Option!

The pro membership hides all ads, plus gives you double the colors in the color bucket, and more awesome pro features!

[Learn more, Memberships starting at \\$2.50/m!](#)

**Follow me
on Twitter!**

@ConvertingColor