

Converting Colors

XYZ(49.5776, 50.1793, 53.0215)

Have a look what the booklet for
XYZ(49.5776, 50.1793, 53.0215)
contains.

XYZ(49.6591, 50.3428, 52.9988)	3
<i>Conversions</i>	4
<i>Details</i>	6
<i>Harmonies</i>	12
<i>Previews</i>	24
<i>Color Blindness Simulation</i>	28
<i>CSS Examples</i>	31

Color

**XYZ(49.6591, 50.3428,
52.9988)**

Conversions

Conversions Part 1

Format	Color
Hex	C7B9B9
RGB	199, 185, 185
RGB Percent	78%, 73%, 73%
CMY	0.2196, 0.2745, 0.2745
CMYK	0.00, 0.07, 0.07, 0.22
HSL	0°, 11%, 75%
HSV	0°, 7%, 78%
XYZ	49.6591, 50.3428, 52.9988
YIQ	189.1860, 8.3440, 2.9680

Conversions

Conversions Part 2

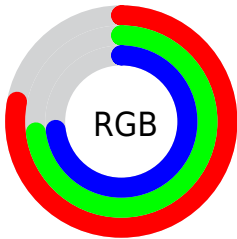
Format	Color
R_{YB}	199, 185, 185
Decimal	13089209
CIE Lab	76.28, 4.95, 1.78
CIE LCh	76, 5.262, 19.735
Yxy	50.3428, 0.3246, 0.3290
Android (android.graphics.Color)	4291279289 (0xFFC7B9B9)
YUV	189.1860, -2.0637, 8.6069
Hunter-Lab	70.9527, 0.7633, 5.3796

Details

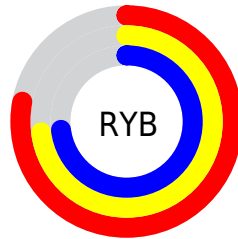
The XYZ color **49.6591, 50.3428, 52.9988** is a light color, and the websafe version is hex **CCCCCC**. A complement of this color would be **50.7397, 55.2838, 62.0300**, and the grayscale version is **48.4855, 51.0105, 55.5504**.

A 20% lighter version of the original color is **88.5725, 90.5215, 96.0232**, and **24.0932, 24.1882, 25.2287** is the 20% darker color. If you saturate the color by 10%, you get **43.8291, 41.8123, 41.4062**, and if you desaturate by 10%, it is **56.3684, 60.1601, 66.3364**.

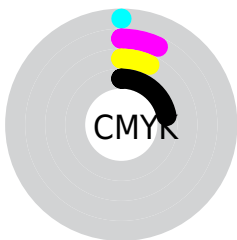
Distribution



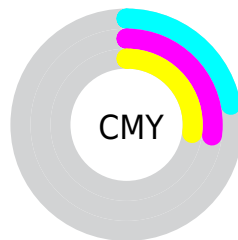
- Red (78%)
- Green (73%)
- Blue (73%)



- Red (78%)
- Yellow (73%)
- Blue (73%)



- Cyan (0%)
- Magenta (7%)
- Yellow (7%)
- Black (22%)



- Cyan (22%)
- Magenta (27%)
- Yellow (27%)

Brightness & Saturation Gradients

These gradients show how the XYZ color 49.6591, 50.3428, 52.9988 changes by changing the brightness by 10 percent. The first figure shows a shift by +10% for each color and the second figure -10%.

Similar to the brightness gradients but the following saturation gradients show a change of the XYZ color 49.6591, 50.3428, 52.9988 by changing the saturation by 10% instead.

■ 49.6591, 50.3428,
52.9988

■ 49.6591, 50.3428,
52.9988

375.8054,
388.0050, 415.3467

■ 35.3593, 35.6859,
37.4141

■ 88.8644, 90.6826,
96.0441

■ 24.1076, 24.1917,
25.2300

114.5007,
117.1342, 124.3418

■ 15.5386, 15.4759,
16.0279

144.6464,
148.2862, 157.7143

■ 9.2870, 9.1540,
9.3893

179.6670,
184.5229, 196.5800

■ 4.9875, 4.8418,
4.8957

219.9279,
226.2287, 241.3576

■ 2.2746, 2.1547,
2.1285

265.7943,

■ 0.7816, 0.6951,

273.7881, 292.4655

0.6327

317.6317,
327.5854, 350.3224

■ 0.0000, 0.0000,
0.0000

■ 49.6591, 50.3428,
52.9988

■ 49.6591, 50.3428,
52.9988

■ 43.8291, 41.8123,
41.4062

■ 56.3684, 60.1601,
66.3364

■ 38.8380, 34.5091,
31.4834

■ 63.9869, 71.3075,
81.4836

■ 34.6484, 28.3787,
23.1545

■ 72.5483, 83.8345,
98.5056

■ 31.2187, 23.3601,
16.3365

■ 77.3635, 90.8823,
108.0723

■ 28.5034, 19.3866,
10.9387

■ 26.4519, 16.3846,
6.8611

■ 25.0075, 14.2707,
3.9904

■ 24.1036, 12.9478,
2.1944

■ 23.6503, 12.2843,
1.2940

Harmonies

Analogous

The Analogous color harmony consists of three colors that are next to each other on the color wheel.



49.7423, 50.3428, 55.7897



49.6591, 50.3428, 52.9988



49.0872, 50.3428, 50.7687

Triad

The Triadic color harmony groups three colors that are evenly spaced from another and form a triangle on the color wheel.



49.6591, 50.3428, 52.9988



46.4149, 50.3428, 51.3743



47.5117, 50.3428, 60.3422

Complementary

The Complementary color scheme is a pair of colors which are on the opposite of each other on the color wheel.



49.6591, 50.3428, 52.9988



50.7397, 55.2838, 62.0300

Split Complementary

Split-complementary colors differ from the complementary color scheme. The scheme consists of three colors, the original color and two neighbors of the complement color.



46.6324, 50.3428, 59.0702



49.6591, 50.3428, 52.9988



46.0050, 50.3428, 53.8513

Square

The Square scheme is like the rectangle color scheme, but the four colors are evenly spaced on the color wheel.



49.6591, 50.3428, 52.9988



47.2110, 50.3428, 49.8534



46.0841, 50.3428, 56.6717



48.4934, 50.3428, 60.0948

Rectangle

The Rectangle color scheme consists of four colors that form a rectangle on the color wheel.



49.6591, 50.3428, 52.9988



48.5101, 50.3428, 49.8696



46.0841, 50.3428, 56.6717



47.1946, 50.3428, 60.0765

Sweetspot

The Sweet Spot groups the original color and five complimentary colors.



49.6605, 50.3450, 52.9999



92.6346, 96.4657, 104.0977



51.2116, 50.9643, 61.1714



19.8529, 20.6846, 22.3315



0.0000, 0.0000, 0.0000



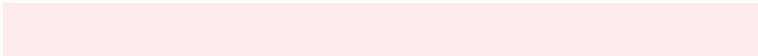
20.3446, 21.4041, 23.3091

Same Dimension

The Same Dimension uses a secret algorithm to generate beautiful new colors.



49.6605, 50.3450, 52.9999



85.7730, 86.4257, 90.4557



51.1605, 53.3449, 53.4999



10.6341, 10.6373, 11.0555



15.1457, 7.8085, 0.7089



0.7172, 0.3699, 0.0336

Inverse Universe

The Inverse Universe completely reimagines the original color for something new.



50.7397, 55.2838, 62.0300



87.9375, 96.3310, 108.5667



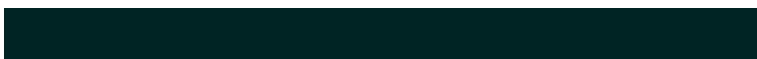
49.1667, 52.1378, 61.5057



10.9465, 12.0671, 13.6697



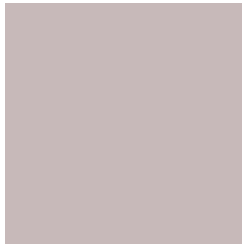
19.7546, 28.9031, 39.2820



0.9355, 1.3687, 1.8600

Previews

White Background



This preview shows how the XYZ color 49.6591, 50.3428, 52.9988 looks on a white background.

Color Contrast Check

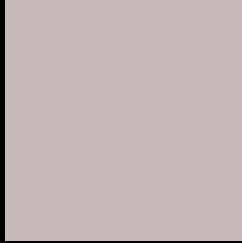
Large Text (above 18pt) WCAG AA × Fail

Any Text WCAG AA × Fail

Large Text (above 18pt) WCAG AAA × Fail

Any Text WCAG AAA × Fail

Black Background



This preview shows how the XYZ color 49.6591, 50.3428, 52.9988 looks on a black background.

Color Contrast Check

Large Text (above 18pt) WCAG AA ✓ Pass

Any Text WCAG AA ✓ Pass

Large Text (above 18pt) WCAG AAA ✓ Pass

Any Text WCAG AAA ✓ Pass

If you want to check with other color combinations, try the [Color Contrast Checker](#).

XYZ 49.6591, 50.3428, 52.9988

Background



This preview shows how black text looks on a background with the XYZ color 49.6591, 50.3428, 52.9988.



This preview shows how white text looks on a background with the XYZ color 49.6591, 50.3428,

Color Blindness Simulation

Color vision deficiency is a very complex topic, and I could not describe the different causes any better than Wikipedia does, so if you want to learn more, you should check out their [article about color blindness](#).

Dichromacy



Original Color

49.6591, 50.3428, 52.9988

Protanopia

48.3715, 50.2923, 53.6123

Deuteranopia

51.3230, 50.2665, 53.4518



Tritanopia

51.0989, 50.3157, 59.8420

Trichromacy



Original Color

49.6591, 50.3428, 52.9988

Protanomaly

48.9275, 50.2651, 53.5777

Deuteranomaly

50.6983, 50.2495, 53.4814

Tritanomaly

50.5855, 50.4106, 57.5161

Monochromacy



Original Color

49.6591, 50.3428, 52.9988

Achromatopsia

48.3692, 50.8881, 55.4172

Achromatomaly

49.0526, 50.9347, 54.8230

CSS Examples

Text

The CSS property to change the color of the text to XYZ 49.6591, 50.3428, 52.9988 is called "color". The color property can be set on classes, ids or directly on the HTML element.

This example shows how text in the color `rgb(199, 185, 185)` looks like.

```
.text, #text, p{  
    color:rgb(199, 185, 185)  
}
```

If you want to add a text shadow in that color use the text-shadow property, you can generate a text shadow directly with our [CSS Text Shadow Generator](#).

Here you see how black text with a 4 pixel rgb(199, 185, 185) colored shadow looks like.

```
.shadow{ text-shadow: 4px 4px 2px rgb(199, 185, 185) }
```

Border

The CSS property to change the border of an element to XYZ 49.6591, 50.3428, 52.9988 is called "border". The border property can be set on classes, ids or directly on the HTML element.

This example shows the color as border, it can be applied via the CSS property "border" or "border-color".

```
.border, #border, table{ border:4px solid rgb(199, 185, 185) }
```


If only the border color should be changed use the property `border-color`.

```
.border{ border-color:rgb(199, 185, 185) }
```

If you want to add a box shadow in that color use:

Here you see how a box with a 4 pixel `rgb(199, 185, 185)` colored shadow looks like.

```
.boxshadow{ -moz-box-shadow:4px 4px 4px  
4px rgb(199, 185, 185); -webkit-box-  
shadow:4px 4px 4px 4px rgb(199, 185, 185);  
box-shadow:4px 4px 4px 4px rgb(199, 185,  
185) }
```

Background

The CSS property to change the background color of an element to XYZ 49.6591, 50.3428, 52.9988 is called "background". The background property can be set on classes, ids or directly on the HTML element.

```
.background, #background, body{  
background: rgb(199, 185, 185) }
```

If only the background color should be changed can be used:

```
.background{ background-color: rgb(199,  
185, 185) }
```

This example shows the color as background, it is applied via the CSS property "background".

To optimize and compress your CSS code, you can use our [online CSS compressor and optimizer](#) based on csstidy. If you want to create a linear or radial gradient as background or border, check our [CSS Gradient Generator](#).

Hey! You found this booklet interesting? Support Converting Colors with the new Membership Option!

The pro membership hides all ads, plus gives you double the colors in the color bucket, and more awesome pro features!

[Learn more, Memberships starting at \\$2.50/m!](#)

**Follow me
on Twitter!**

@ConvertingColor