

Converting Colors

XYZ(49.5869, 47.2955, 48.4104)

Have a look what the booklet for
XYZ(49.5869, 47.2955, 48.4104)
contains.

XYZ(49.6603, 47.4296, 48.6569)	3
<i>Conversions</i>	4
<i>Details</i>	6
<i>Harmonies</i>	12
<i>Previews</i>	24
<i>Color Blindness Simulation</i>	28
<i>CSS Examples</i>	31

Color

**XYZ(49.6603, 47.4296,
48.6569)**

Conversions

Conversions Part 1

Format	Color
Hex	D1AFB2
RGB	209, 175, 178
RGB Percent	82%, 69%, 70%
CMY	0.1804, 0.3137, 0.3020
CMYK	0.00, 0.16, 0.15, 0.18
HSL	355°, 27%, 75%
HSV	355°, 16%, 82%
XYZ	49.6603, 47.4296, 48.6569
YIQ	185.5080, 19.3010, 8.1410

Conversions

Conversions Part 2

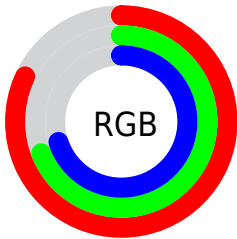
Format	Color
R _Y B	209, 175, 178
Decimal	13742002
CIE Lab	74.46, 12.78, 3.07
CIE LCh	74, 13.144, 13.489
Yxy	47.4296, 0.3407, 0.3254
Android (android.graphics.Color)	4291932082 (0xFFD1AFB2)
YUV	185.5080, -3.7014, 20.6025
Hunter-Lab	68.8692, 8.1921, 6.3193

Details

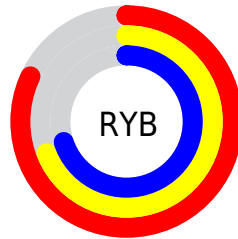
The XYZ color **49.6603, 47.4296, 48.6569** is a light color, and the websafe version is hex **CC9999**. A complement of this color would be **51.6221, 59.1722, 67.0960**, and the grayscale version is **46.4106, 48.8276, 53.1732**.

A 20% lighter version of the original color is **84.6672, 84.3523, 89.6611**, and **23.9876, 22.2698, 22.4362** is the 20% darker color. If you saturate the color by 10%, you get **44.1207, 39.2025, 38.0164**, and if you desaturate by 10%, it is **56.0980, 57.0264, 60.9095**.

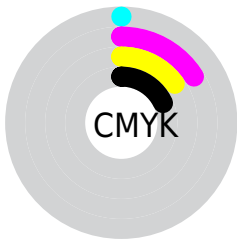
Distribution



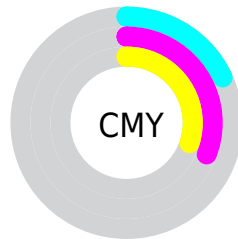
- Red (82%)
- Green (69%)
- Blue (70%)



- Red (82%)
- Yellow (69%)
- Blue (70%)



- Cyan (0%)
- Magenta (16%)
- Yellow (15%)
- Black (18%)




- Cyan (18%)
- Magenta (31%)
- Yellow (30%)

Brightness & Saturation Gradients


These gradients show how the XYZ color 49.6603, 47.4296, 48.6569 changes by changing the brightness by 10 percent. The first figure shows a shift by +10% for each color and the second figure -10%.


Similar to the brightness gradients but the following saturation gradients show a change of the XYZ color 49.6603, 47.4296, 48.6569 by changing the saturation by 10% instead.


 49.6603, 47.4296,
48.6569

 49.6603, 47.4296,
48.6569


375.8100,
376.5267, 397.9736

 35.3602, 33.3754,
33.9837

 88.8662, 86.3545,
89.5574

 24.1083, 22.4142,
22.6038

114.5028,
111.9940, 116.6217

 15.5392, 14.1615,
14.0987

144.6489,
142.2641, 148.6535

 9.2874, 8.2331,
8.0498

179.6699,
177.5491, 186.0714

 4.9877, 4.2445,
4.0386

219.9311,
218.2335, 229.2938

 2.2748, 1.8112,
1.6465

265.7980,

 0.7817, 0.4942,

264.7017, 278.7392

0.3237

317.6358,
317.3379, 334.8263

■ 0.0000, 0.0000,
0.0000

■ 49.6603, 47.4296,
48.6569

■ 49.6603, 47.4296,
48.6569

■ 44.1207, 39.2025,
38.0164

■ 56.0980, 57.0264,
60.9095

■ 39.4354, 32.2767,
28.9181

■ 63.4672, 68.0447,
74.8342

■ 35.5631, 26.5874,
21.2910

■ 71.8042, 80.5413,
90.4918

■ 32.4573, 22.0617,
15.0580

■ 79.9815, 92.2461,
107.5520

■ 30.0667, 18.6192,
10.1343

■ 80.1046, 92.2954,
108.2006

■ 28.3340, 16.1692,
6.4264

■ 27.1927, 14.6061,
3.8279

■ 26.5607, 13.7973,
2.2136

■ 26.4073, 13.6004,
1.8238

Harmonies

Analogous

The Analogous color harmony consists of three colors that are next to each other on the color wheel.



49.5939, 47.4296, 55.4429



49.6603, 47.4296, 48.6569



48.4694, 47.4296, 43.1686

Triad

The Triadic color harmony groups three colors that are evenly spaced from another and form a triangle on the color wheel.



49.6603, 47.4296, 48.6569



42.0153, 47.4296, 42.7379



43.7972, 47.4296, 65.1989

Complementary

The Complementary color scheme is a pair of colors which are on the opposite of each other on the color wheel.



49.6603, 47.4296, 48.6569



51.6221, 59.1722, 67.0960

Split Complementary

Split-complementary colors differ from the complementary color scheme. The scheme consists of three colors, the original color and two neighbors of the complement color.



41.8532, 47.4296, 61.1592



49.6603, 47.4296, 48.6569



40.8494, 47.4296, 48.0204

Square

The Square scheme is like the rectangle color scheme, but the four colors are evenly spaced on the color wheel.



49.6603, 47.4296, 48.6569



44.0254, 47.4296, 39.9590



40.7911, 47.4296, 54.7484



46.1521, 47.4296, 65.4073

Rectangle

The Rectangle color scheme consists of four colors that form a rectangle on the color wheel.



49.6603, 47.4296, 48.6569



47.1461, 47.4296, 40.8186



40.7911, 47.4296, 54.7484



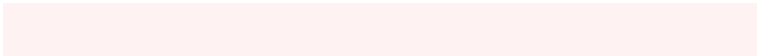
43.0760, 47.4296, 64.2290

Sweetspot

The Sweet Spot groups the original color and five complimentary colors.



49.6616, 47.4317, 48.6579



89.3008, 91.4069, 98.0268



52.1826, 48.3302, 66.9003



18.9476, 19.3162, 20.6663



0.0000, 0.0000, 0.0000



20.3446, 21.4041, 23.3091

Same Dimension

The Same Dimension uses a secret algorithm to generate beautiful new colors.



49.6616, 47.4317, 48.6579



74.2790, 69.0242, 69.4022



52.1454, 52.8755, 48.0177



11.8504, 11.8249, 12.4882



16.2974, 8.3918, 1.2065



0.9262, 0.4752, 0.1462

Inverse Universe

The Inverse Universe completely reimagines the original color for something new.



49.6616, 47.4317, 48.6579



74.2790, 69.0242, 69.4022



48.7944, 52.9288, 67.9665



11.8504, 11.8249, 12.4882



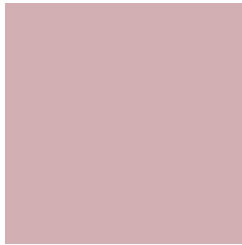
16.2974, 8.3918, 1.2065



0.9262, 0.4752, 0.1462

Previews

White Background



This preview shows how the XYZ color 49.6603, 47.4296, 48.6569 looks on a white background.

Color Contrast Check

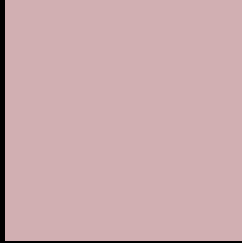
Large Text (above 18pt) WCAG AA × Fail

Any Text WCAG AA × Fail

Large Text (above 18pt) WCAG AAA × Fail

Any Text WCAG AAA × Fail

Black Background



This preview shows how the XYZ color 49.6603, 47.4296, 48.6569 looks on a black background.

Color Contrast Check

Large Text (above 18pt) WCAG AA ✓ Pass

Any Text WCAG AA ✓ Pass

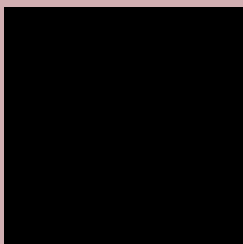
Large Text (above 18pt) WCAG AAA ✓ Pass

Any Text WCAG AAA ✓ Pass

If you want to check with other color combinations, try the [Color Contrast Checker](#).

XYZ 49.6603, 47.4296, 48.6569

Background



This preview shows how black text looks on a background with the XYZ color 49.6603, 47.4296, 48.6569.



This preview shows how white text looks on a background with the XYZ color 49.6603, 47.4296,

48.6569.

Color Blindness Simulation

Color vision deficiency is a very complex topic, and I could not describe the different causes any better than Wikipedia does, so if you want to learn more, you should check out their [article about color blindness](#).

Dichromacy



Original Color

49.6603, 47.4296, 48.6569

Protanopia

45.6650, 47.3981, 50.9979

Deuteranopia

48.3866, 47.3551, 48.7097



Tritanopia

50.6840, 47.5616, 53.5227

Trichromacy



Original Color

49.6603, 47.4296, 48.6569

Protanomaly

46.9663, 47.1785, 50.3470

Deuteranomaly

48.7381, 47.2442, 48.6697

Tritanomaly

50.3661, 47.4344, 51.8486

Monochromacy



Original Color

49.6603, 47.4296, 48.6569

Achromatopsia

46.6715, 49.1021, 53.4722

Achromatomaly

47.5233, 48.3441, 51.6263

CSS Examples

Text

The CSS property to change the color of the text to XYZ 49.6603, 47.4296, 48.6569 is called "color". The color property can be set on classes, ids or directly on the HTML element.

This example shows how text in the color `rgb(209, 175, 178)` looks like.

```
.text, #text, p{  
    color:rgb(209, 175, 178)  
}
```

If you want to add a text shadow in that color use the text-shadow property, you can generate a text shadow directly with our [CSS Text Shadow Generator](#).

Here you see how black text with a 4 pixel rgb(209, 175, 178) colored shadow looks like.

```
.shadow{ text-shadow: 4px 4px 2px rgb(209, 175, 178) }
```

Border

The CSS property to change the border of an element to XYZ 49.6603, 47.4296, 48.6569 is called "border". The border property can be set on classes, ids or directly on the HTML element.

This example shows the color as border, it can be applied via the CSS property "border" or "border-color".

```
.border, #border, table{ border:4px solid rgb(209, 175, 178) }
```


If only the border color should be changed use the property `border-color`.

```
.border{ border-color:rgb(209, 175, 178) }
```

If you want to add a box shadow in that color use:

Here you see how a box with a 4 pixel `rgb(209, 175, 178)` colored shadow looks like.

```
.boxshadow{ -moz-box-shadow:4px 4px 4px  
4px rgb(209, 175, 178); -webkit-box-  
shadow:4px 4px 4px 4px rgb(209, 175, 178);  
box-shadow:4px 4px 4px 4px rgb(209, 175,  
178) }
```

Background

The CSS property to change the background color of an element to XYZ 49.6603, 47.4296, 48.6569 is called "background". The background property can be set on classes, ids or directly on the HTML element.

```
.background, #background, body{  
background: rgb(209, 175, 178) }
```

If only the background color should be changed can be used:

```
.background{ background-color: rgb(209,  
175, 178) }
```

This example shows the color as background, it is applied via the CSS property "background".

To optimize and compress your CSS code, you can use our [online CSS compressor and optimizer](#) based on csstidy. If you want to create a linear or radial gradient as background or border, check our [CSS Gradient Generator](#).

Hey! You found this booklet interesting? Support Converting Colors with the new Membership Option!

The pro membership hides all ads, plus gives you double the colors in the color bucket, and more awesome pro features!

[Learn more, Memberships starting at \\$2.50/m!](#)

**Follow me
on Twitter!**

@ConvertingColor