

Converting Colors

XYZ(49.5871, 48.5881, 45.2935)

Have a look what the booklet for
XYZ(49.5871, 48.5881, 45.2935)
contains.

| | |
|--|----|
| XYZ(49.7653, 48.7358, 45.3121) | 3 |
| <i>Conversions</i> | 4 |
| <i>Details</i> | 6 |
| <i>Harmonies</i> | 12 |
| <i>Previews</i> | 24 |
| <i>Color Blindness Simulation</i> | 28 |
| <i>CSS Examples</i> | 31 |

Color

**XYZ(49.7653, 48.7358,
45.3121)**

Conversions

Conversions Part 1

| Format | Color |
|-------------|---------------------------|
| Hex | D1B3AB |
| RGB | 209, 179, 171 |
| RGB Percent | 82%, 70%, 67% |
| CMY | 0.1804, 0.2980, 0.3294 |
| CMYK | 0.00, 0.14, 0.18, 0.18 |
| HSL | 13°, 29%, 75% |
| HSV | 13°, 18%, 82% |
| XYZ | 49.7653, 48.7358, 45.3121 |
| YIQ | 187.0580, 20.4480, 3.8720 |

Conversions

Conversions Part 2

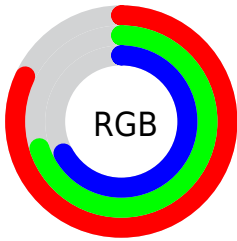
| Format | Color |
|-------------------------------------|-------------------------------|
| RYB | 209, 181, 171 |
| Decimal | 13743019 |
| CIELab | 75.29, 9.52, 8.07 |
| CIElCh | 75, 12.480, 40.301 |
| Yxy | 48.7358, 0.3460, 0.3389 |
| Android (android.graphics.Color) | 4291933099 (0xFFD1B3AB) |
| YUV | 187.0580, -7.9166, 19.2431 |
| Hunter-Lab | 69.8110, 5.0757, 10.3845 |

Details

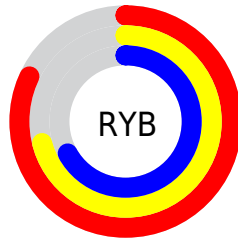
The XYZ color **49.7653, 48.7358, 45.3121** is a light color, and the websafe version is hex **CC9999**. A complement of this color would be **49.1895, 55.0334, 68.3520**, and the grayscale version is **47.3031, 49.7665, 54.1958**.

A 20% lighter version of the original color is **84.6758, 86.1676, 84.1206**, and **24.1171, 23.1236, 20.6450** is the 20% darker color. If you saturate the color by 10%, you get **44.8177, 41.7804, 34.5992**, and if you desaturate by 10%, it is **55.4262, 56.6128, 57.8180**.

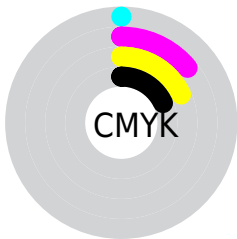
Distribution



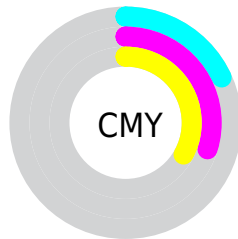
- Red (82%)
- Green (70%)
- Blue (67%)



- Red (82%)
- Yellow (71%)
- Blue (67%)



- Cyan (0%)
- Magenta (14%)
- Yellow (18%)
- Black (18%)





- Cyan (18%)
- Magenta (30%)
- Yellow (33%)

Brightness & Saturation Gradients


These gradients show how the XYZ color 49.7653, 48.7358, 45.3121 changes by changing the brightness by 10 percent. The first figure shows a shift by +10% for each color and the second figure -10%.


Similar to the brightness gradients but the following saturation gradients show a change of the XYZ color 49.7653, 48.7358, 45.3121 by changing the saturation by 10% instead.


 49.7653, 48.7358,
45.3121

 49.7653, 48.7358,
45.3121


376.2146,
381.7013, 384.2330

 35.4440, 34.4099,
31.3586

 89.0209, 88.2989,
84.5120

 24.1732, 23.2087,
20.6113


114.6860,
114.3050, 110.5954

 15.5876, 14.7477,
12.6517


144.8630,
144.9733, 141.5592

 9.3218, 8.6425,
7.0613

179.9173,
180.6881, 177.8220

 5.0104, 4.5087,
3.4214

220.2142,
221.8339, 219.8022

 2.2882, 1.9620,
1.3136

266.1192,

 0.7886, 0.5853,

268.7952, 267.9184

0.0729

317.9975,
321.9561, 322.5892

■ 0.0000, 0.0000,
0.0000

■ 49.7653, 48.7358,
45.3121

■ 49.7653, 48.7358,
45.3121

■ 44.8177, 41.7804,
34.5992

■ 55.4262, 56.6128,
57.8180

■ 40.5509, 35.7064,
25.5938

■ 61.8234, 65.4368,
72.1909

■ 36.9353, 30.4802,
18.2081

■ 68.9839, 75.2404,
88.5043

■ 33.9381, 26.0634,
12.3450

■ 76.9320, 86.0525,
106.8269

■ 31.5230, 22.4149,
7.8971

■ 80.1047, 92.2954,
108.2006

■ 29.6500, 19.4895,
4.7428

■ 28.2734, 17.2372,
2.7398

■ 27.3329, 15.5985,
1.6794

■ 27.1962, 15.3584,
1.5311

Harmonies

Analogous

The Analogous color harmony consists of three colors that are next to each other on the color wheel.



50.7951, 48.7358, 50.8396



49.7653, 48.7358, 45.3121



47.8235, 48.7358, 42.0460

Triad

The Triadic color harmony groups three colors that are evenly spaced from another and form a triangle on the color wheel.



49.7653, 48.7358, 45.3121



42.2950, 48.7358, 48.9228



47.1145, 48.7358, 66.4784

Complementary

The Complementary color scheme is a pair of colors which are on the opposite of each other on the color wheel.



49.7653, 48.7358, 45.3121



49.1895, 55.0334, 68.3520

Split Complementary

Split-complementary colors differ from the complementary color scheme. The scheme consists of three colors, the original color and two neighbors of the complement color.



44.8521, 48.7358, 65.8583



49.7653, 48.7358, 45.3121



42.1194, 48.7358, 55.3544

Square

The Square scheme is like the rectangle color scheme, but the four colors are evenly spaced on the color wheel.



49.7653, 48.7358, 45.3121



43.5292, 48.7358, 44.0086



43.0411, 48.7358, 61.6553



49.2316, 48.7358, 63.2857

Rectangle

The Rectangle color scheme consists of four colors that form a rectangle on the color wheel.



49.7653, 48.7358, 45.3121



46.2988, 48.7358, 41.4168



43.0411, 48.7358, 61.6553



46.3451, 48.7358, 66.7149

Sweetspot

The Sweet Spot groups the original color and five complimentary colors.



49.7666, 48.7380, 45.3131



89.9375, 92.9517, 97.4027



51.4477, 46.9177, 61.8503



19.1017, 19.6901, 20.5154



0.0000, 0.0000, 0.0000



20.3446, 21.4041, 23.3091

Same Dimension

The Same Dimension uses a secret algorithm to generate beautiful new colors.



49.7666, 48.7380, 45.3131



74.7611, 71.8266, 63.8956



53.7485, 56.7017, 46.6404



12.0077, 12.2060, 12.3352



16.8267, 9.5865, 0.9635



0.9998, 0.6539, 0.0735

Inverse Universe

The Inverse Universe completely reimagines the original color for something new.



49.1895, 55.0334, 68.3520



73.6822, 83.5596, 106.8529



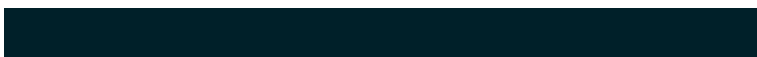
45.1138, 46.8820, 66.9934



11.9382, 12.9667, 15.1173



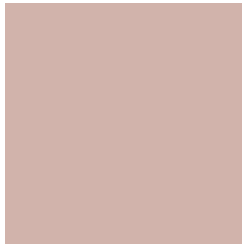
15.4630, 19.5726, 40.1554



0.9188, 1.2029, 2.2633

Previews

White Background



This preview shows how the XYZ color 49.7653, 48.7358, 45.3121 looks on a white background.

Color Contrast Check

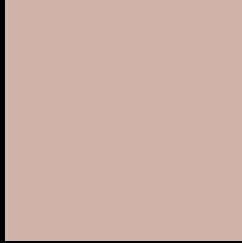
Large Text (above 18pt) WCAG AA × Fail

Any Text WCAG AA × Fail

Large Text (above 18pt) WCAG AAA × Fail

Any Text WCAG AAA × Fail

Black Background



This preview shows how the XYZ color 49.7653, 48.7358, 45.3121 looks on a black background.

Color Contrast Check

Large Text (above 18pt) WCAG AA ✓ Pass

Any Text WCAG AA ✓ Pass

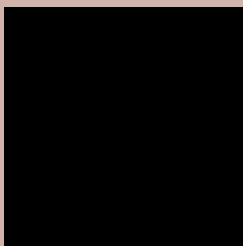
Large Text (above 18pt) WCAG AAA ✓ Pass

Any Text WCAG AAA ✓ Pass

If you want to check with other color combinations, try the [Color Contrast Checker](#).

XYZ 49.7653, 48.7358, 45.3121

Background



This preview shows how black text looks on a background with the XYZ color 49.7653, 48.7358, 45.3121.



This preview shows how white text looks on a background with the XYZ color 49.7653, 48.7358,

45.3121.

Color Blindness Simulation

Color vision deficiency is a very complex topic, and I could not describe the different causes any better than Wikipedia does, so if you want to learn more, you should check out their [article about color blindness](#).

Dichromacy



Original Color

49.7653, 48.7358, 45.3121

Protanopia

46.7272, 48.9604, 47.0319

Deuteranopia

49.7653, 48.7358, 45.3121



Tritanopia

51.6836, 48.6173, 55.3752

Trichromacy



Original Color

49.7653, 48.7358, 45.3121

Protanomaly

47.7650, 48.8899, 46.4544

Deuteranomaly

49.7653, 48.7358, 45.3121

Tritanomaly

50.8477, 48.5648, 51.4937

Monochromacy



Original Color

49.7653, 48.7358, 45.3121

Achromatopsia

47.2335, 49.6933, 54.1160

Achromatomaly

47.9867, 49.2193, 50.6872

CSS Examples

Text

The CSS property to change the color of the text to XYZ 49.7653, 48.7358, 45.3121 is called "color". The color property can be set on classes, ids or directly on the HTML element.

This example shows how text in the color `rgb(209, 179, 171)` looks like.

```
.text, #text, p{  
    color:rgb(209, 179, 171)  
}
```

If you want to add a text shadow in that color use the text-shadow property, you can generate a text shadow directly with our [CSS Text Shadow Generator](#).

Here you see how black text with a 4 pixel rgb(209, 179, 171) colored shadow looks like.

```
.shadow{ text-shadow: 4px 4px 2px rgb(209, 179, 171) }
```

Border

The CSS property to change the border of an element to XYZ 49.7653, 48.7358, 45.3121 is called "border". The border property can be set on classes, ids or directly on the HTML element.

This example shows the color as border, it can be applied via the CSS property "border" or "border-color".

```
.border, #border, table{ border:4px solid rgb(209, 179, 171) }
```


If only the border color should be changed use the property `border-color`.

```
.border{ border-color:rgb(209, 179, 171) }
```

If you want to add a box shadow in that color use:

Here you see how a box with a 4 pixel `rgb(209, 179, 171)` colored shadow looks like.

```
.boxshadow{ -moz-box-shadow:4px 4px 4px  
4px rgb(209, 179, 171); -webkit-box-  
shadow:4px 4px 4px 4px rgb(209, 179, 171);  
box-shadow:4px 4px 4px 4px rgb(209, 179,  
171) }
```

Background

The CSS property to change the background color of an element to XYZ 49.7653, 48.7358, 45.3121 is called "background". The background property can be set on classes, ids or directly on the HTML element.

```
.background, #background, body{  
background: rgb(209, 179, 171) }
```

If only the background color should be changed can be used:

```
.background{ background-color: rgb(209,  
179, 171) }
```

This example shows the color as background, it is applied via the CSS property "background".

To optimize and compress your CSS code, you can use our [online CSS compressor and optimizer](#) based on csstidy. If you want to create a linear or radial gradient as background or border, check our [CSS Gradient Generator](#).

Hey! You found this booklet interesting? Support Converting Colors with the new Membership Option!

The pro membership hides all ads, plus gives you double the colors in the color bucket, and more awesome pro features!

[Learn more, Memberships starting at \\$2.50/m!](#)

**Follow me
on Twitter!**

@ConvertingColor