

# Converting Colors

XYZ(49.6346, 36.8913, 79.0000)

Have a look what the booklet for  
XYZ(49.6346, 36.8913, 79.0000)  
contains.

<b>XYZ(49.5252, 36.7428, 79.3447)</b> .....	3
<b><i>Conversions</i></b> .....	4
<b><i>Details</i></b> .....	6
<b><i>Harmonies</i></b> .....	12
<b><i>Previews</i></b> .....	24
<b><i>Color Blindness Simulation</i></b> .....	28
<b><i>CSS Examples</i></b> .....	31

# Color

**XYZ(49.5252, 36.7428,  
79.3447)**

# Conversions

## Conversions Part 1

Format	Color
Hex	D287E6
RGB	210, 135, 230
RGB Percent	82%, 53%, 90%
CMY	0.1765, 0.4706, 0.0980
CMYK	0.09, 0.41, 0.00, 0.10
HSL	287°, 66%, 72%
HSV	287°, 41%, 90%
XYZ	49.5252, 36.7428, 79.3447
YIQ	168.2550, 14.2050, 45.4450

# Conversions

## Conversions Part 2

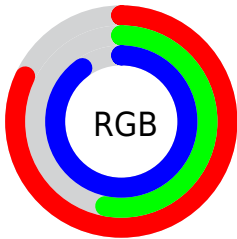
<b>Format</b>	<b>Color</b>
R <sub>Y</sub> B	210, 135, 230
Decimal	13797350
CIE Lab	67.08, 44.23, -36.73
CIE LCh	67, 57.489, 320.291
Yxy	36.7428, 0.2990, 0.2219
Android (android.graphics.Color)	4291987430 (0xFFD287E6)
YUV	168.2550, 30.4403, 36.6104
Hunter-Lab	60.6158, 39.7628, -35.1781

# Details

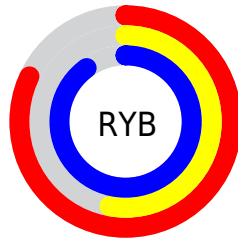
The XYZ color **49.5252, 36.7428, 79.3447** is a light color, and the websafe version is hex **CC99FF**. A complement of this color would be **46.1889, 65.3124, 33.0956**, and the grayscale version is **37.1961, 39.1332, 42.6160**.

A 20% lighter version of the original color is **77.7035, 65.3069, 103.1178**, and **24.0597, 16.1125, 41.8863** is the 20% darker color. If you saturate the color by 10%, you get **45.2986, 30.3044, 78.3253**, and if you desaturate by 10%, it is **54.4892, 44.5920, 80.5987**.

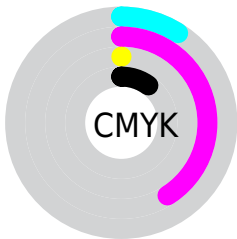
# Distribution



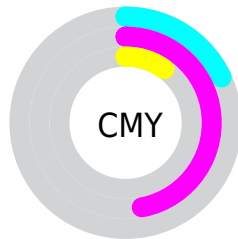
- Red (82%)
- Green (53%)
- Blue (90%)



- Red (82%)
- Yellow (53%)
- Blue (90%)



- Cyan (9%)
- Magenta (41%)
- Yellow (0%)
- Black (10%)



- Cyan (18%)
- Magenta (47%)
- Yellow (10%)

# Brightness & Saturation Gradients

These gradients show how the XYZ color 49.5252, 36.7428, 79.3447 changes by changing the brightness by 10 percent. The first figure shows a shift by +10% for each color and the second figure -10%.

Similar to the brightness gradients but the following saturation gradients show a change of the XYZ color 49.5252, 36.7428, 79.3447 by changing the saturation by 10% instead.



49.5252, 36.7428,  
79.3447

49.5252, 36.7428,  
79.3447

375.2890,  
332.1956, 512.3701

35.2525, 25.0084,  
58.6563

88.6670, 70.1770,  
134.2471

24.0249, 16.0833,  
41.9183

114.2669, 92.6457,  
169.2981

15.4769, 9.5831,  
28.7122

144.3732,  
119.4612, 209.9738

9.2433, 5.1235,  
18.6195

179.3514,  
151.0080, 256.6926

4.9586, 2.3199,  
11.2217

219.5666,  
187.6704, 309.8730

2.2575, 0.7842,  
6.1001

265.3845,

0.7728, 0.0000,

229.8329, 369.9338

2.8363

317.1701,  
277.8798, 437.2933

■ 0.0000, 0.0000,  
1.0116

■ 0.0000, 0.0000,  
0.0000

■ 49.5252, 36.7428,  
79.3447

■ 49.5252, 36.7428,  
79.3447

■ 45.2986, 30.3044,  
78.3253

■ 54.4892, 44.5920,  
80.5987

■ 41.7601, 25.1818,  
77.5230

■ 60.2281, 53.9296,  
82.0986

■ 38.8602, 21.2757,  
76.9219

■ 66.7815, 64.8331,  
83.8577

■ 36.5408, 18.4701,  
76.5026

■ 74.1848, 77.3731,  
85.8880

■ 34.7322, 16.6266,  
76.2421

■ 82.4716, 91.6160,  
88.2004

■ 33.4753, 15.6072,  
76.1116

■ 85.6580, 95.5934,  
88.8002

■ 87.3153, 96.4478,  
88.8777

■ 89.0168, 97.3249,  
88.9574

■ 90.7628, 98.2250,  
89.0391

# Harmonies

## Analogous

The Analogous color harmony consists of three colors that are next to each other on the color wheel.



41.0863, 36.7428, 104.3246



49.5252, 36.7428, 79.3447



54.2622, 36.7428, 48.6917

# Triad

The Triadic color harmony groups three colors that are evenly spaced from another and form a triangle on the color wheel.



49.5252, 36.7428, 79.3447



37.8367, 36.7428, 8.8339



21.4040, 36.7428, 59.1435

# Complementary

The Complementary color scheme is a pair of colors which are on the opposite of each other on the color wheel.



49.5252, 36.7428, 79.3447



46.1889, 65.3124, 33.0956

# Split Complementary

Split-complementary colors differ from the complementary color scheme. The scheme consists of three colors, the original color and two neighbors of the complement color.



20.8300, 36.7428, 32.4211



49.5252, 36.7428, 79.3447



29.4090, 36.7428, 9.7008

# Square

The Square scheme is like the rectangle color scheme, but the four colors are evenly spaced on the color wheel.



49.5252, 36.7428, 79.3447



46.8078, 36.7428, 13.2146



23.5164, 36.7428, 16.4493



25.2421, 36.7428, 89.6798



# Rectangle

The Rectangle color scheme consists of four colors that form a rectangle on the color wheel.



49.5252, 36.7428, 79.3447



54.2223, 36.7428, 32.0037



23.5164, 36.7428, 16.4493



20.8510, 36.7428, 49.2436

# Sweetspot

The Sweet Spot groups the original color and five complimentary colors.



49.5265, 36.7444, 79.3455



83.7228, 80.8052, 105.7920



36.0948, 34.5031, 79.6208



17.6766, 16.8878, 22.5780



0.0000, 0.0000, 0.0000



20.3446, 21.4041, 23.3091



# Same Dimension

The Same Dimension uses a secret algorithm to generate beautiful new colors.



49.5265, 36.7444, 79.3455



57.7491, 39.0480, 99.1011



52.0877, 38.4683, 61.2330



14.6825, 14.4541, 18.1604



19.0573, 8.8903, 43.0947



1.4829, 0.6954, 3.1880



# Inverse Universe

The Inverse Universe completely reimagines the original color for something new.



47.2147, 36.5191, 35.5725



54.7554, 38.9127, 35.3464



44.8040, 64.3511, 44.2049



14.5005, 14.4174, 15.5701



18.8181, 9.6615, 2.6713



1.4241, 0.7274, 0.3740



# Previews

## White Background



This preview shows how the XYZ color 49.5252, 36.7428, 79.3447 looks on a white background.

## Color Contrast Check

Large Text (above 18pt) WCAG AA × Fail

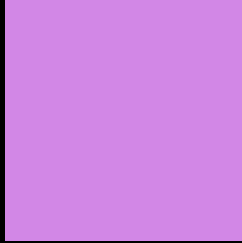
Any Text WCAG AA × Fail

Large Text (above 18pt) WCAG AAA × Fail

Any Text WCAG AAA × Fail



# Black Background



This preview shows how the XYZ color 49.5252, 36.7428, 79.3447 looks on a black background.

## Color Contrast Check

Large Text (above 18pt) WCAG AA ✓ Pass

Any Text WCAG AA ✓ Pass

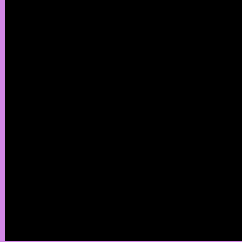
Large Text (above 18pt) WCAG AAA ✓ Pass

Any Text WCAG AAA ✓ Pass

If you want to check with other color combinations, try the [Color Contrast Checker](#).

**XYZ 49.5252, 36.7428, 79.3447**

## **Background**



This preview shows how black text looks on a background with the XYZ color 49.5252, 36.7428, 79.3447.



This preview shows how white text looks on a background with the XYZ color 49.5252, 36.7428,



# Color Blindness Simulation

Color vision deficiency is a very complex topic, and I could not describe the different causes any better than Wikipedia does, so if you want to learn more, you should check out their [article about color blindness](#).

## Dichromacy



### Original Color

49.5252, 36.7428, 79.3447

### Protanopia

39.5175, 37.2801, 96.3798

### Deuteranopia

37.8371, 36.8553, 76.3537



## Tritanopia

41.1588, 36.6653, 38.6260

# Trichromacy



## Original Color

49.5252, 36.7428, 79.3447



## Protanomaly

41.9031, 36.4011, 89.6116



## Deuteranomaly

41.2418, 36.3274, 77.5112



## Tritanomaly

43.8902, 36.6333, 51.2121

# Monochromacy



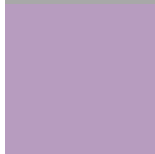
## Original Color

49.5252, 36.7428, 79.3447



## Achromatopsia

37.2190, 39.1572, 42.6422



## Achromatomaly

40.8209, 37.6058, 54.3974

# CSS Examples

## Text

The CSS property to change the color of the text to XYZ 49.5252, 36.7428, 79.3447 is called "color". The color property can be set on classes, ids or directly on the HTML element.

This example shows how text in the color `rgb(210, 135, 230)` looks like.

```
.text, #text, p{  
    color:rgb(210, 135, 230)  
}
```

If you want to add a text shadow in that color use the text-shadow property, you can generate a text shadow directly with our [CSS Text Shadow Generator](#).

Here you see how black text with a 4 pixel rgb(210, 135, 230) colored shadow looks like.

```
.shadow{ text-shadow: 4px 4px 2px rgb(210, 135, 230) }
```

## Border

The CSS property to change the border of an element to XYZ 49.5252, 36.7428, 79.3447 is called "border". The border property can be set on classes, ids or directly on the HTML element.

This example shows the color as border, it can be applied via the CSS property "border" or "border-color".

```
.border, #border, table{ border:4px solid rgb(210, 135, 230) }
```



If only the border color should be changed use the property `border-color`.

```
.border{ border-color:rgb(210, 135, 230) }
```

If you want to add a box shadow in that color use:

Here you see how a box with a 4 pixel `rgb(210, 135, 230)` colored shadow looks like.

```
.boxshadow{ -moz-box-shadow:4px 4px 4px  
4px rgb(210, 135, 230); -webkit-box-  
shadow:4px 4px 4px 4px rgb(210, 135, 230);  
box-shadow:4px 4px 4px 4px rgb(210, 135,  
230) }
```

# Background

The CSS property to change the background color of an element to XYZ 49.5252, 36.7428, 79.3447 is called "background". The background property can be set on classes, ids or directly on the HTML element.

```
.background, #background, body{  
background: rgb(210, 135, 230) }
```

If only the background color should be changed can be used:

```
.background{ background-color: rgb(210,  
135, 230) }
```

This example shows the color as background, it is applied via the CSS property "background".

To optimize and compress your CSS code, you can use our [online CSS compressor and optimizer](#) based on csstidy. If you want to create a linear or radial gradient as background or border, check our [CSS Gradient Generator](#).

Hey! You found this booklet interesting? Support Converting Colors with the new Membership Option!

The pro membership hides all ads, plus gives you double the colors in the color bucket, and more awesome pro features!

**[Learn more, Memberships starting at \\$2.50/m!](#)**

**Follow me  
on Twitter!**

@ConvertingColor