

Converting Colors

XYZ(49.7809, 49.7268, 55.6897)

Have a look what the booklet for
XYZ(49.7809, 49.7268, 55.6897)
contains.

XYZ(49.7809, 49.7268, 55.6897)	3
<i>Conversions</i>	4
<i>Details</i>	6
<i>Harmonies</i>	12
<i>Previews</i>	24
<i>Color Blindness Simulation</i>	28
<i>CSS Examples</i>	31

Color

**XYZ(49.7809, 49.7268,
55.6897)**

Conversions

Conversions Part 1

Format	Color
Hex	C7B7BE
RGB	199, 183, 190
RGB Percent	78%, 72%, 75%
CMY	0.2196, 0.2823, 0.2549
CMYK	0.00, 0.08, 0.05, 0.22
HSL	334°, 12%, 75%
HSV	334°, 8%, 78%
XYZ	49.7809, 49.7268, 55.6897
YIQ	188.5820, 7.2890, 5.5690

Conversions

Conversions Part 2

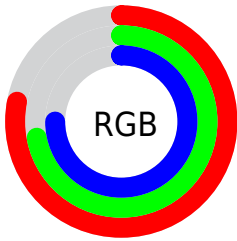
Format	Color
R _Y B	199, 183, 190
Decimal	13088702
CIE Lab	75.90, 6.91, -1.49
CIE LCh	76, 7.070, 347.804
Yxy	49.7268, 0.3208, 0.3204
Android (android.graphics.Color)	4291278782 (0xFFC7B7BE)
YUV	188.5820, 0.6991, 9.1366
Hunter-Lab	70.5172, 2.6050, 2.5389

Details

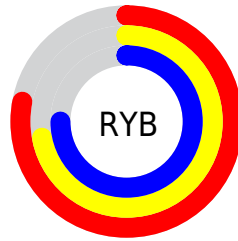
The XYZ color **49.7809, 49.7268, 55.6897** is a light color, and the websafe version is hex **CCCCCC**. A complement of this color would be **49.4681, 54.7211, 57.8267**, and the grayscale version is **48.1255, 50.6318, 55.1380**.

A 20% lighter version of the original color is **88.7411, 89.6468, 99.8152**, and **24.1750, 23.7911, 26.9849** is the 20% darker color. If you saturate the color by 10%, you get **44.7862, 41.6206, 48.2177**, and if you desaturate by 10%, it is **55.4528, 59.0356, 63.8525**.

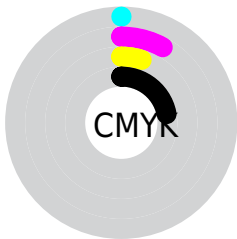
Distribution



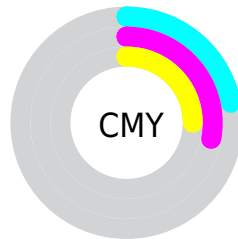
- Red (78%)
- Green (72%)
- Blue (75%)



- Red (78%)
- Yellow (72%)
- Blue (75%)



- Cyan (0%)
- Magenta (8%)
- Yellow (5%)
- Black (22%)



- Cyan (22%)
- Magenta (28%)
- Yellow (25%)

Brightness & Saturation Gradients

These gradients show how the XYZ color 49.7809, 49.7268, 55.6897 changes by changing the brightness by 10 percent. The first figure shows a shift by +10% for each color and the second figure -10%.

Similar to the brightness gradients but the following saturation gradients show a change of the XYZ color 49.7809, 49.7268, 55.6897 by changing the saturation by 10% instead.

■ 49.7809, 49.7268,
55.6897

■ 49.7809, 49.7268,
55.6897

376.2747,
385.5966, 425.8765

■ 35.4564, 35.1964,
39.5519

■ 89.0439, 89.7700,
100.0320

■ 24.1828, 23.8142,
26.8782

114.7132,
116.0515, 129.0736

■ 15.5948, 15.1958,
17.2501

144.8948,
147.0188, 163.2534

■ 9.3269, 8.9569,
10.2491

179.9540,
183.0564, 202.9901

■ 5.0138, 4.7131,
5.4567

220.2563,
224.5485, 248.7023

■ 2.2902, 2.0799,
2.4543

266.1669,

■ 0.7897, 0.6533,

271.8797, 300.8083

0.8158

318.0512,
325.4342, 359.7269

■ 0.0000, 0.0000,
0.0000

■ 49.7809, 49.7268,
55.6897

■ 49.7809, 49.7268,
55.6897

■ 44.7862, 41.6206,
48.2177

■ 55.4528, 59.0356,
63.8525

■ 40.4382, 34.6613,
41.4141

■ 61.8224, 69.5868,
72.7211

■ 36.7100, 28.7982,
35.2599

■ 68.9148, 81.4266,
82.3142

■ 33.5716, 23.9744,
29.7340

■ 74.2779, 89.6480,
91.8239

■ 30.9899, 20.1280,
24.8136

■ 75.9452, 90.3149,
100.6038

■ 28.9288, 17.1902,
20.4748

■ 77.3634, 90.8822,
108.0723

■ 27.3471, 15.0832,
16.6911

■ 26.1973, 13.7160,
13.4334

■ 25.4089, 12.9522,
10.6642

Harmonies

Analogous

The Analogous color harmony consists of three colors that are next to each other on the color wheel.



49.1637, 49.7268, 59.1596



49.7809, 49.7268, 55.6897



49.7146, 49.7268, 51.9580

Triad

The Triadic color harmony groups three colors that are evenly spaced from another and form a triangle on the color wheel.



49.7809, 49.7268, 55.6897



46.4942, 49.7268, 47.5322



45.5843, 49.7268, 59.6932

Complementary

The Complementary color scheme is a pair of colors which are on the opposite of each other on the color wheel.



49.7809, 49.7268, 55.6897



49.4681, 54.7211, 57.8267

Split Complementary

Split-complementary colors differ from the complementary color scheme. The scheme consists of three colors, the original color and two neighbors of the complement color.



44.8950, 49.7268, 56.3905



49.7809, 49.7268, 55.6897



45.4136, 49.7268, 49.4202

Square

The Square scheme is like the rectangle color scheme, but the four colors are evenly spaced on the color wheel.



49.7809, 49.7268, 55.6897



47.8005, 49.7268, 47.3641



44.8331, 49.7268, 52.6272



46.7312, 49.7268, 61.5419

Rectangle

The Rectangle color scheme consists of four colors that form a rectangle on the color wheel.



49.7809, 49.7268, 55.6897



49.2918, 49.7268, 49.8217



44.8331, 49.7268, 52.6272



45.2923, 49.7268, 58.7094

Sweetspot

The Sweet Spot groups the original color and five complimentary colors.



49.7823, 49.7290, 55.6908



92.9859, 96.6056, 105.9499



48.9317, 49.1733, 60.9458



19.9245, 20.7131, 22.7087



0.0000, 0.0000, 0.0000



20.3446, 21.4041, 23.3091

Same Dimension

The Same Dimension uses a secret algorithm to generate beautiful new colors.



49.7823, 49.7290, 55.6908



85.2233, 83.9059, 94.6516



49.2011, 49.7612, 51.8141



10.8233, 10.7127, 12.0529



16.2949, 8.2675, 6.7625



0.8078, 0.4060, 0.5110

Inverse Universe

The Inverse Universe completely reimagines the original color for something new.



49.7823, 49.7290, 55.6908



85.2233, 83.9059, 94.6516



50.0786, 54.6716, 61.9466



10.8233, 10.7127, 12.0529



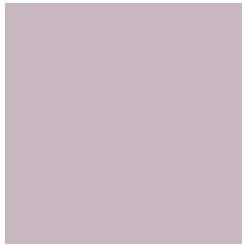
16.2949, 8.2675, 6.7625



0.8078, 0.4060, 0.5110

Previews

White Background



This preview shows how the XYZ color 49.7809, 49.7268, 55.6897 looks on a white background.

Color Contrast Check

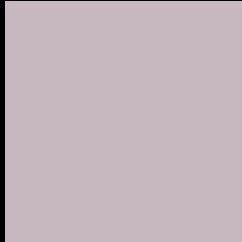
Large Text (above 18pt) WCAG AA × Fail

Any Text WCAG AA × Fail

Large Text (above 18pt) WCAG AAA × Fail

Any Text WCAG AAA × Fail

Black Background



This preview shows how the XYZ color 49.7809, 49.7268, 55.6897 looks on a black background.

Color Contrast Check

Large Text (above 18pt) WCAG AA ✓ Pass

Any Text WCAG AA ✓ Pass

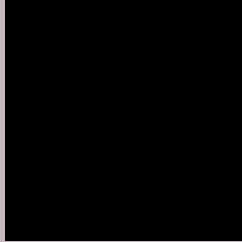
Large Text (above 18pt) WCAG AAA ✓ Pass

Any Text WCAG AAA ✓ Pass

If you want to check with other color combinations, try the [Color Contrast Checker](#).

XYZ 49.7809, 49.7268, 55.6897

Background



This preview shows how black text looks on a background with the XYZ color 49.7809, 49.7268, 55.6897.



This preview shows how white text looks on a background with the XYZ color 49.7809, 49.7268,

Color Blindness Simulation

Color vision deficiency is a very complex topic, and I could not describe the different causes any better than Wikipedia does, so if you want to learn more, you should check out their [article about color blindness](#).

Dichromacy



Original Color

49.7809, 49.7268, 55.6897

Protanopia

48.0596, 49.7424, 56.9374

Deuteranopia

50.7200, 49.6028, 55.6163



Tritanopia

50.5112, 49.7208, 59.1594

Trichromacy



Original Color

49.7809, 49.7268, 55.6897

Protanomaly

48.7453, 49.7970, 56.3328

Deuteranomaly

50.3793, 49.7302, 55.6588

Tritanomaly

50.2850, 49.6303, 57.9682

Monochromacy



Original Color

49.7809, 49.7268, 55.6897

Achromatopsia

48.3692, 50.8881, 55.4172

Achromatomaly

48.9480, 50.5522, 55.3218

CSS Examples

Text

The CSS property to change the color of the text to XYZ 49.7809, 49.7268, 55.6897 is called "color". The color property can be set on classes, ids or directly on the HTML element.

This example shows how text in the color `rgb(199, 183, 190)` looks like.

```
.text, #text, p{  
    color:rgb(199, 183, 190)  
}
```

If you want to add a text shadow in that color use the text-shadow property, you can generate a text shadow directly with our [CSS Text Shadow Generator](#).

Here you see how black text with a 4 pixel rgb(199, 183, 190) colored shadow looks like.

```
.shadow{ text-shadow: 4px 4px 2px rgb(199, 183, 190) }
```

Border

The CSS property to change the border of an element to XYZ 49.7809, 49.7268, 55.6897 is called "border". The border property can be set on classes, ids or directly on the HTML element.

This example shows the color as border, it can be applied via the CSS property "border" or "border-color".

```
.border, #border, table{ border:4px solid rgb(199, 183, 190) }
```


If only the border color should be changed use the property `border-color`.

```
.border{ border-color:rgb(199, 183, 190) }
```

If you want to add a box shadow in that color use:

Here you see how a box with a 4 pixel `rgb(199, 183, 190)` colored shadow looks like.

```
.boxshadow{ -moz-box-shadow:4px 4px 4px  
4px rgb(199, 183, 190); -webkit-box-  
shadow:4px 4px 4px 4px rgb(199, 183, 190);  
box-shadow:4px 4px 4px 4px rgb(199, 183,  
190) }
```

Background

The CSS property to change the background color of an element to XYZ 49.7809, 49.7268, 55.6897 is called "background". The background property can be set on classes, ids or directly on the HTML element.

```
.background, #background, body{  
background: rgb(199, 183, 190) }
```

If only the background color should be changed can be used:

```
.background{ background-color: rgb(199,  
183, 190) }
```

This example shows the color as background, it is applied via the CSS property "background".

To optimize and compress your CSS code, you can use our [online CSS compressor and optimizer](#) based on csstidy. If you want to create a linear or radial gradient as background or border, check our [CSS Gradient Generator](#).

Hey! You found this booklet interesting? Support Converting Colors with the new Membership Option!

The pro membership hides all ads, plus gives you double the colors in the color bucket, and more awesome pro features!

[Learn more, Memberships starting at \\$2.50/m!](#)

**Follow me
on Twitter!**

@ConvertingColor