

Converting Colors

XYZ(49.8364, 48.2678, 51.2137)

Have a look what the booklet for
XYZ(49.8364, 48.2678, 51.2137)
contains.

XYZ(49.8175, 48.3400, 50.9609)	3
<i>Conversions</i>	4
<i>Details</i>	6
<i>Harmonies</i>	12
<i>Previews</i>	24
<i>Color Blindness Simulation</i>	28
<i>CSS Examples</i>	31

Color

**XYZ(49.8175, 48.3400,
50.9609)**

Conversions

Conversions Part 1

Format	Color
Hex	CEB2B6
RGB	206, 178, 182
RGB Percent	81%, 70%, 71%
CMY	0.1922, 0.3019, 0.2863
CMYK	0.00, 0.14, 0.12, 0.19
HSL	351°, 22%, 75%
HSV	351°, 14%, 81%
XYZ	49.8175, 48.3400, 50.9609
YIQ	186.8280, 15.4040, 7.1800

Conversions

Conversions Part 2

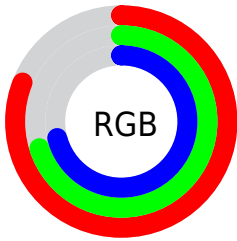
Format	Color
R _Y B	206, 178, 182
Decimal	13546166
CIE Lab	75.04, 10.73, 1.68
CIE LCh	75, 10.858, 8.907
Yxy	48.3400, 0.3341, 0.3242
Android (android.graphics.Color)	4291736246 (0xFFCEB2B6)
YUV	186.8280, -2.3802, 16.8138
Hunter-Lab	69.5270, 6.2267, 5.2113

Details

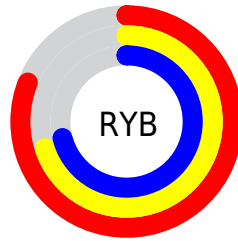
The XYZ color **49.8175, 48.3400, 50.9609** is a light color, and the websafe version is hex **CC9999**. A complement of this color would be **51.0939, 57.8731, 64.3576**, and the grayscale version is **47.1452, 49.6004, 54.0148**.

A 20% lighter version of the original color is **86.0954, 86.2787, 93.0047**, and **24.0586, 22.8315, 23.9078** is the 20% darker color. If you saturate the color by 10%, you get **44.3112, 40.0658, 40.6821**, and if you desaturate by 10%, it is **56.1722, 57.9415, 62.6592**.

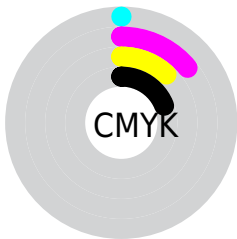
Distribution



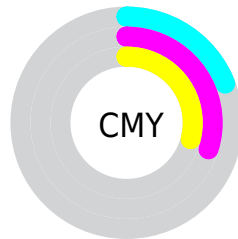
- Red (81%)
- Green (70%)
- Blue (71%)



- Red (81%)
- Yellow (70%)
- Blue (71%)



- Cyan (0%)
- Magenta (14%)
- Yellow (12%)
- Black (19%)




- Cyan (19%)
- Magenta (30%)
- Yellow (29%)

Brightness & Saturation Gradients


These gradients show how the XYZ color 49.8175, 48.3400, 50.9609 changes by changing the brightness by 10 percent. The first figure shows a shift by +10% for each color and the second figure -10%.


Similar to the brightness gradients but the following saturation gradients show a change of the XYZ color 49.8175, 48.3400, 50.9609 by changing the saturation by 10% instead.


 49.8175, 48.3400,
50.9609

 49.8175, 48.3400,
50.9609

376.4156,
380.1382, 407.2541

 35.4856, 34.0962,
35.8010

 89.0979, 87.7104,
93.0079

 24.2055, 22.9675,
23.9921


114.7770,
113.6058, 120.7320

 15.6117, 14.5695,
15.1156


144.9694,
144.1539, 153.4813

 9.3389, 8.5178,
8.7530

180.0402,
179.7391, 191.6743

 5.0217, 4.4280,
4.4858

220.3549,
220.7457, 235.7296

 2.2949, 1.9158,
1.8955

266.2788,

 0.7921, 0.5578,

267.5582, 286.0656

0.4899

318.1772,
320.5609, 343.1009

■ 0.0000, 0.0000,
0.0000

■ 49.8175, 48.3400,
50.9609

■ 49.8175, 48.3400,
50.9609

■ 44.3112, 40.0658,
40.6821

■ 56.1722, 57.9415,
62.6592

■ 39.6133, 33.0544,
31.7656

■ 63.4050, 68.9185,
75.8250

■ 35.6868, 27.2456,
24.1549

■ 71.5491, 81.3245,
90.5080

■ 32.4900, 22.5714,
17.7884

■ 78.8860, 91.7108,
106.1716

■ 29.9773, 18.9576,
12.5994

■ 79.2638, 91.8619,
108.1612

■ 28.0980, 16.3205,
8.5149

■ 26.7938, 14.5643,
5.4536

■ 25.9959, 13.5732,
3.3226

■ 25.6807, 13.2127,
2.3857

Harmonies

Analogous

The Analogous color harmony consists of three colors that are next to each other on the color wheel.



49.5967, 48.3400, 56.6635



49.8175, 48.3400, 50.9609



48.9779, 48.3400, 46.0677

Triad

The Triadic color harmony groups three colors that are evenly spaced from another and form a triangle on the color wheel.



49.8175, 48.3400, 50.9609



43.5918, 48.3400, 44.5838



44.5868, 48.3400, 63.4966

Complementary

The Complementary color scheme is a pair of colors which are on the opposite of each other on the color wheel.



49.8175, 48.3400, 50.9609



51.0939, 57.8731, 64.3576

Split Complementary

Split-complementary colors differ from the complementary color scheme. The scheme consists of three colors, the original color and two neighbors of the complement color.



43.0414, 48.3400, 59.7964



49.8175, 48.3400, 50.9609



42.4785, 48.3400, 48.8003

Square

The Square scheme is like the rectangle color scheme, but the four colors are evenly spaced on the color wheel.



49.8175, 48.3400, 50.9609



45.3577, 48.3400, 42.5638



42.2799, 48.3400, 54.3434



46.5388, 48.3400, 64.1791

Rectangle

The Rectangle color scheme consists of four colors that form a rectangle on the color wheel.



49.8175, 48.3400, 50.9609



47.9436, 48.3400, 43.8238



42.2799, 48.3400, 54.3434



44.0042, 48.3400, 62.5524

Sweetspot

The Sweet Spot groups the original color and five complimentary colors.



49.8189, 48.3421, 50.9619



90.5058, 93.1134, 100.5975



51.3655, 48.8279, 65.1105



19.1947, 19.6617, 21.2071



0.0000, 0.0000, 0.0000



20.3446, 21.4041, 23.3091

Same Dimension

The Same Dimension uses a secret algorithm to generate beautiful new colors.



49.8189, 48.3421, 50.9619



78.2587, 74.6230, 78.0059



51.4315, 52.2190, 49.4906



11.2765, 11.2393, 11.9906



15.8349, 8.1445, 1.5832



0.8385, 0.4288, 0.1954

Inverse Universe

The Inverse Universe completely reimagines the original color for something new.



49.8189, 48.3421, 50.9619



78.2587, 74.6230, 78.0059



49.2875, 53.4930, 66.1205



11.2765, 11.2393, 11.9906



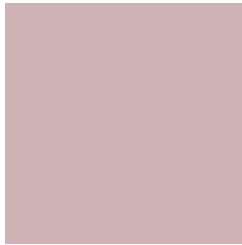
15.8349, 8.1445, 1.5832



0.8385, 0.4288, 0.1954

Previews

White Background



This preview shows how the XYZ color 49.8175, 48.3400, 50.9609 looks on a white background.

Color Contrast Check

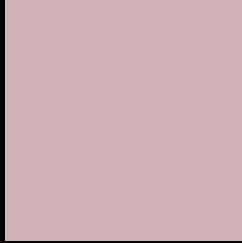
Large Text (above 18pt) WCAG AA × Fail

Any Text WCAG AA × Fail

Large Text (above 18pt) WCAG AAA × Fail

Any Text WCAG AAA × Fail

Black Background



This preview shows how the XYZ color 49.8175, 48.3400, 50.9609 looks on a black background.

Color Contrast Check

Large Text (above 18pt) WCAG AA ✓ Pass

Any Text WCAG AA ✓ Pass

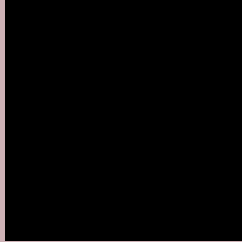
Large Text (above 18pt) WCAG AAA ✓ Pass

Any Text WCAG AAA ✓ Pass

If you want to check with other color combinations, try the [Color Contrast Checker](#).

XYZ 49.8175, 48.3400, 50.9609

Background



This preview shows how black text looks on a background with the XYZ color 49.8175, 48.3400, 50.9609.



This preview shows how white text looks on a background with the XYZ color 49.8175, 48.3400,

Color Blindness Simulation

Color vision deficiency is a very complex topic, and I could not describe the different causes any better than Wikipedia does, so if you want to learn more, you should check out their [article about color blindness](#).

Dichromacy



Original Color

49.8175, 48.3400, 50.9609

Protanopia

46.6365, 48.4751, 52.7976

Deuteranopia

49.4654, 48.4550, 51.0016



Tritanopia

50.7485, 48.4274, 55.3879

Trichromacy



Original Color

49.8175, 48.3400, 50.9609

Protanomaly

47.8854, 48.5187, 52.1886

Deuteranomaly

49.7404, 48.5967, 51.0145

Tritanomaly

50.4239, 48.2975, 53.6784

Monochromacy



Original Color

49.8175, 48.3400, 50.9609

Achromatopsia

47.2335, 49.6933, 54.1160

Achromatomaly

48.1456, 49.2531, 52.8682

CSS Examples

Text

The CSS property to change the color of the text to XYZ 49.8175, 48.3400, 50.9609 is called "color". The color property can be set on classes, ids or directly on the HTML element.

This example shows how text in the color `rgb(206, 178, 182)` looks like.

```
.text, #text, p{  
    color:rgb(206, 178, 182)  
}
```

If you want to add a text shadow in that color use the text-shadow property, you can generate a text shadow directly with our [CSS Text Shadow Generator](#).

Here you see how black text with a 4 pixel rgb(206, 178, 182) colored shadow looks like.

```
.shadow{ text-shadow: 4px 4px 2px rgb(206, 178, 182) }
```

Border

The CSS property to change the border of an element to XYZ 49.8175, 48.3400, 50.9609 is called "border". The border property can be set on classes, ids or directly on the HTML element.

This example shows the color as border, it can be applied via the CSS property "border" or "border-color".

```
.border, #border, table{ border:4px solid rgb(206, 178, 182) }
```


If only the border color should be changed use the property `border-color`.

```
.border{ border-color:rgb(206, 178, 182) }
```

If you want to add a box shadow in that color use:

Here you see how a box with a 4 pixel `rgb(206, 178, 182)` colored shadow looks like.

```
.boxshadow{ -moz-box-shadow:4px 4px 4px  
4px rgb(206, 178, 182); -webkit-box-  
shadow:4px 4px 4px 4px rgb(206, 178, 182);  
box-shadow:4px 4px 4px 4px rgb(206, 178,  
182) }
```

Background

The CSS property to change the background color of an element to XYZ 49.8175, 48.3400, 50.9609 is called "background". The background property can be set on classes, ids or directly on the HTML element.

```
.background, #background, body{  
background: rgb(206, 178, 182) }
```

If only the background color should be changed can be used:

```
.background{ background-color: rgb(206,  
178, 182) }
```

This example shows the color as background, it is applied via the CSS property "background".

To optimize and compress your CSS code, you can use our [online CSS compressor and optimizer](#) based on csstidy. If you want to create a linear or radial gradient as background or border, check our [CSS Gradient Generator](#).

Hey! You found this booklet interesting? Support Converting Colors with the new Membership Option!

The pro membership hides all ads, plus gives you double the colors in the color bucket, and more awesome pro features!

[Learn more, Memberships starting at \\$2.50/m!](#)

**Follow me
on Twitter!**

@ConvertingColor