

Converting Colors

XYZ(49.8577, 50.0132, 50.4076)

Have a look what the booklet for
XYZ(49.8577, 50.0132, 50.4076)
contains.

XYZ(49.8003, 49.8588, 50.1790)	3
<i>Conversions</i>	4
<i>Details</i>	6
<i>Harmonies</i>	12
<i>Previews</i>	24
<i>Color Blindness Simulation</i>	28
<i>CSS Examples</i>	31

Color

**XYZ(49.8003, 49.8588,
50.1790)**

Conversions

Conversions Part 1

Format	Color
Hex	CBB7B4
RGB	203, 183, 180
RGB Percent	80%, 72%, 71%
CMY	0.2039, 0.2823, 0.2941
CMYK	0.00, 0.10, 0.11, 0.20
HSL	8°, 18%, 75%
HSV	8°, 11%, 80%
XYZ	49.8003, 49.8588, 50.1790
YIQ	188.6380, 12.8830, 3.3070

Conversions

Conversions Part 2

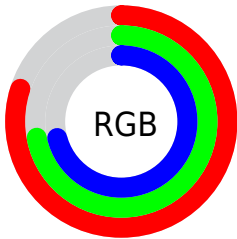
Format	Color
RYB	203, 183, 180
Decimal	13350836
CIELab	75.98, 6.61, 4.11
CIELCh	76, 7.784, 31.839
Yxy	49.8588, 0.3324, 0.3328
Android (android.graphics.Color)	4291540916 (0xFFCBB7B4)
YUV	188.6380, -4.2585, 12.5955
Hunter-Lab	70.6108, 2.3235, 7.2935

Details

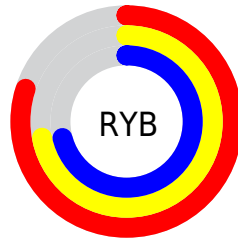
The XYZ color **49.8003, 49.8588, 50.1790** is a light color, and the websafe version is hex **CCCCCC**. A complement of this color would be **50.2559, 55.3225, 64.5299**, and the grayscale version is **48.1826, 50.6918, 55.2034**.

A 20% lighter version of the original color is **87.2468, 89.0491, 91.9467**, and **24.2078, 23.8871, 23.4135** is the 20% darker color. If you saturate the color by 10%, you get **44.4673, 42.2631, 38.9348**, and if you desaturate by 10%, it is **55.8955, 58.4930, 63.1728**.

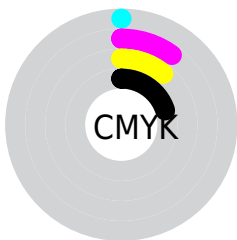
Distribution



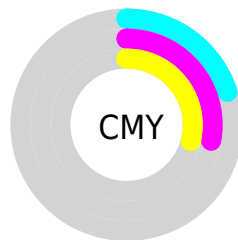
- Red (80%)
- Green (72%)
- Blue (71%)



- Red (80%)
- Yellow (72%)
- Blue (71%)



- Cyan (0%)
- Magenta (10%)
- Yellow (11%)
- Black (20%)



- Cyan (20%)
- Magenta (28%)
- Yellow (29%)

Brightness & Saturation Gradients

These gradients show how the XYZ color 49.8003, 49.8588, 50.1790 changes by changing the brightness by 10 percent. The first figure shows a shift by +10% for each color and the second figure -10%.

Similar to the brightness gradients but the following saturation gradients show a change of the XYZ color 49.8003, 49.8588, 50.1790 by changing the saturation by 10% instead.

■ 49.8003, 49.8588,
50.1790

■ 49.8003, 49.8588,
50.1790

376.3494,
386.1135, 404.1206

■ 35.4719, 35.3012,
35.1835

■ 89.0725, 89.9656,
91.8391

■ 24.1948, 23.8950,
23.5196

114.7470,
116.2837, 119.3407

■ 15.6037, 15.2557,
14.7687

144.9343,
147.2907, 151.8481

■ 9.3332, 8.9991,
8.5124

179.9997,
183.3710, 189.7798

■ 5.0180, 4.7406,
4.3321

220.3085,
224.9090, 233.5544

■ 2.2927, 2.0959,
1.8092

266.2262,

■ 0.7909, 0.6623,

272.2892, 283.5903

0.4340

318.1180,
325.8959, 340.3062

■ 0.0000, 0.0000,
0.0000

■ 49.8003, 49.8588,
50.1790

■ 49.8003, 49.8588,
50.1790

■ 44.4673, 42.2631,
38.9348

■ 55.8955, 58.4930,
63.1728

■ 39.8624, 35.6605,
29.3623

■ 62.7769, 68.1959,
77.9830

■ 35.9550, 30.0117,
21.3824

■ 70.4729, 79.0048,
94.6772

■ 32.7109, 25.2725,
14.9086

■ 77.9940, 90.5471,
107.9744

■ 30.0926, 21.3952,
9.8459

■ 78.4388, 91.4366,
108.1226

■ 28.0593, 18.3275,
6.0885

■ 26.5649, 16.0116,
3.5158

■ 25.5561, 14.3817,
1.9843

■ 25.0096, 13.4583,
1.2795

Harmonies

Analogous

The Analogous color harmony consists of three colors that are next to each other on the color wheel.



50.2342, 49.8588, 54.0316



49.8003, 49.8588, 50.1790



48.7189, 49.8588, 47.5408

Triad

The Triadic color harmony groups three colors that are evenly spaced from another and form a triangle on the color wheel.



49.8003, 49.8588, 50.1790



44.9708, 49.8588, 50.6018



47.4789, 49.8588, 62.6758

Complementary

The Complementary color scheme is a pair of colors which are on the opposite of each other on the color wheel.



49.8003, 49.8588, 50.1790



50.2559, 55.3225, 64.5299

Split Complementary

Split-complementary colors differ from the complementary color scheme. The scheme consists of three colors, the original color and two neighbors of the complement color.



46.0841, 49.8588, 61.6447



49.8003, 49.8588, 50.1790



44.6539, 49.8588, 54.5447

Square

The Square scheme is like the rectangle color scheme, but the four colors are evenly spaced on the color wheel.



49.8003, 49.8588, 50.1790



45.9320, 49.8588, 47.7759



45.0574, 49.8588, 58.6149



48.8771, 49.8588, 61.3659

Rectangle

The Rectangle color scheme consists of four colors that form a rectangle on the color wheel.



49.8003, 49.8588, 50.1790



47.7866, 49.8588, 46.7531



45.0574, 49.8588, 58.6149



46.9942, 49.8588, 62.5913

Sweetspot

The Sweet Spot groups the original color and five complimentary colors.



49.8017, 49.8610, 50.1801



91.7574, 95.3467, 101.8467



51.4128, 49.5247, 61.6878



19.4559, 20.1479, 21.4061



0.0000, 0.0000, 0.0000



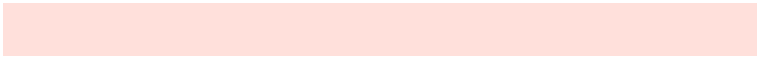
20.3446, 21.4041, 23.3091

Same Dimension

The Same Dimension uses a secret algorithm to generate beautiful new colors.



49.8017, 49.8610, 50.1801



80.7113, 79.6813, 78.3512



52.2000, 54.6576, 50.9795



11.3285, 11.4459, 11.6916



15.9537, 8.6404, 0.8269



0.8628, 0.5253, 0.0559

Inverse Universe

The Inverse Universe completely reimagines the original color for something new.



50.2559, 55.3225, 64.5299



81.6444, 90.9079, 107.8516



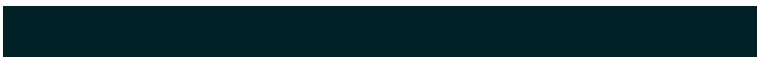
47.7607, 50.3321, 63.6982



11.4135, 12.4673, 14.3753



16.8490, 22.7219, 39.4540



0.9049, 1.2435, 2.0473

Previews

White Background



This preview shows how the XYZ color 49.8003, 49.8588, 50.1790 looks on a white background.

Color Contrast Check

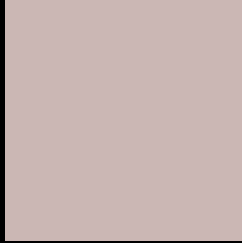
Large Text (above 18pt) WCAG AA × Fail

Any Text WCAG AA × Fail

Large Text (above 18pt) WCAG AAA × Fail

Any Text WCAG AAA × Fail

Black Background



This preview shows how the XYZ color 49.8003, 49.8588, 50.1790 looks on a black background.

Color Contrast Check

Large Text (above 18pt) WCAG AA ✓ Pass

Any Text WCAG AA ✓ Pass

Large Text (above 18pt) WCAG AAA ✓ Pass

Any Text WCAG AAA ✓ Pass

If you want to check with other color combinations, try the [Color Contrast Checker](#).

XYZ 49.8003, 49.8588, 50.1790

Background



This preview shows how black text looks on a background with the XYZ color 49.8003, 49.8588, 50.1790.



This preview shows how white text looks on a background with the XYZ color 49.8003, 49.8588,

Color Blindness Simulation

Color vision deficiency is a very complex topic, and I could not describe the different causes any better than Wikipedia does, so if you want to learn more, you should check out their [article about color blindness](#).

Dichromacy



Original Color

49.8003, 49.8588, 50.1790

Protanopia

47.9520, 50.1245, 51.4036

Deuteranopia

50.7745, 49.7529, 50.1072



Tritanopia

51.5510, 49.9670, 58.5573

Trichromacy



Original Color

49.8003, 49.8588, 50.1790

Protanomaly

48.6643, 50.1898, 50.8388

Deuteranomaly

50.4198, 49.8730, 50.1491

Tritanomaly

50.9241, 50.0110, 55.6843

Monochromacy



Original Color

49.8003, 49.8588, 50.1790

Achromatopsia

48.3692, 50.8881, 55.4172

Achromatomaly

48.8814, 50.5552, 53.6362

CSS Examples

Text

The CSS property to change the color of the text to XYZ 49.8003, 49.8588, 50.1790 is called "color". The color property can be set on classes, ids or directly on the HTML element.

This example shows how text in the color `rgb(203, 183, 180)` looks like.

```
.text, #text, p{  
    color:rgb(203, 183, 180)  
}
```

If you want to add a text shadow in that color use the text-shadow property, you can generate a text shadow directly with our [CSS Text Shadow Generator](#).

Here you see how black text with a 4 pixel rgb(203, 183, 180) colored shadow looks like.

```
.shadow{ text-shadow: 4px 4px 2px rgb(203, 183, 180) }
```

Border

The CSS property to change the border of an element to XYZ 49.8003, 49.8588, 50.1790 is called "border". The border property can be set on classes, ids or directly on the HTML element.

This example shows the color as border, it can be applied via the CSS property "border" or "border-color".

```
.border, #border, table{ border:4px solid rgb(203, 183, 180) }
```


If only the border color should be changed use the property `border-color`.

```
.border{ border-color:rgb(203, 183, 180) }
```

If you want to add a box shadow in that color use:

Here you see how a box with a 4 pixel `rgb(203, 183, 180)` colored shadow looks like.

```
.boxshadow{ -moz-box-shadow:4px 4px 4px  
4px rgb(203, 183, 180); -webkit-box-  
shadow:4px 4px 4px 4px rgb(203, 183, 180);  
box-shadow:4px 4px 4px 4px rgb(203, 183,  
180) }
```

Background

The CSS property to change the background color of an element to XYZ 49.8003, 49.8588, 50.1790 is called "background". The background property can be set on classes, ids or directly on the HTML element.

```
.background, #background, body{  
background: rgb(203, 183, 180) }
```

If only the background color should be changed can be used:

```
.background{ background-color: rgb(203,  
183, 180) }
```

This example shows the color as background, it is applied via the CSS property "background".

To optimize and compress your CSS code, you can use our [online CSS compressor and optimizer](#) based on csstidy. If you want to create a linear or radial gradient as background or border, check our [CSS Gradient Generator](#).

Hey! You found this booklet interesting? Support Converting Colors with the new Membership Option!

The pro membership hides all ads, plus gives you double the colors in the color bucket, and more awesome pro features!

[Learn more, Memberships starting at \\$2.50/m!](#)

**Follow me
on Twitter!**

@ConvertingColor