

Converting Colors

XYZ(50.0585, 47.9013, 49.7925)

Have a look what the booklet for
XYZ(50.0585, 47.9013, 49.7925)
contains.

XYZ(50.0580, 47.9013, 49.7875)	3
<i>Conversions</i>	4
<i>Details</i>	6
<i>Harmonies</i>	12
<i>Previews</i>	24
<i>Color Blindness Simulation</i>	28
<i>CSS Examples</i>	31

Color

**XYZ(50.0580, 47.9013,
49.7875)**

Conversions

Conversions Part 1

Format	Color
Hex	D1B0B4
RGB	209, 176, 180
RGB Percent	82%, 69%, 71%
CMY	0.1804, 0.3098, 0.2941
CMYK	0.00, 0.16, 0.14, 0.18
HSL	353°, 26%, 75%
HSV	353°, 16%, 82%
XYZ	50.0580, 47.9013, 49.7875
YIQ	186.3230, 18.3840, 8.2400

Conversions

Conversions Part 2

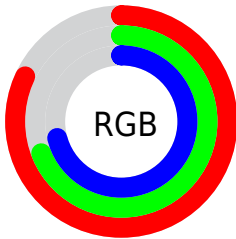
Format	Color
RYB	209, 176, 180
Decimal	13742260
CIELab	74.76, 12.57, 2.41
CIELCh	75, 12.793, 10.840
Yxy	47.9013, 0.3388, 0.3242
Android (android.graphics.Color)	4291932340 (0xFFD1B0B4)
YUV	186.3230, -3.1172, 19.8877
Hunter-Lab	69.2108, 7.9847, 5.7966

Details

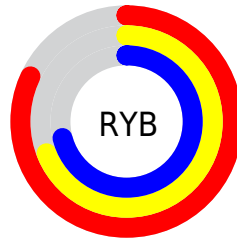
The XYZ color **50.0580, 47.9013, 49.7875** is a light color, and the websafe version is hex **CC9999**. A complement of this color would be **51.7263, 59.2399, 66.4687**, and the grayscale version is **46.8640, 49.3046, 53.6927**.

A 20% lighter version of the original color is **85.2369, 85.0294, 91.2767**, and **24.2401, 22.5682, 23.1572** is the 20% darker color. If you saturate the color by 10%, you get **44.5224, 39.6287, 39.3138**, and if you desaturate by 10%, it is **56.4752, 57.5392, 61.7798**.

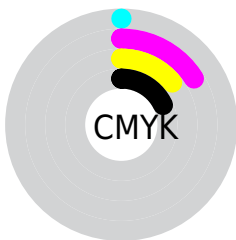
Distribution



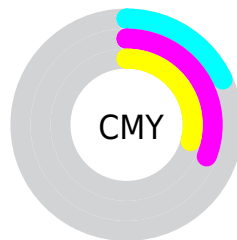
- Red (82%)
- Green (69%)
- Blue (71%)



- Red (82%)
- Yellow (69%)
- Blue (71%)



- Cyan (0%)
- Magenta (16%)
- Yellow (14%)
- Black (18%)




- Cyan (18%)
- Magenta (31%)
- Yellow (29%)

Brightness & Saturation Gradients

These gradients show how the XYZ color 50.0580, 47.9013, 49.7875 changes by changing the brightness by 10 percent. The first figure shows a shift by +10% for each color and the second figure -10%.

Similar to the brightness gradients but the following saturation gradients show a change of the XYZ color 50.0580, 47.9013, 49.7875 by changing the saturation by 10% instead.


 50.0580, 47.9013,
49.7875

 50.0580, 47.9013,
49.7875


377.3410,
378.4008, 402.5456

 35.6775, 33.7487,
34.8746

 89.4521, 87.0574,
91.2530

 24.3542, 22.7006,
23.2835


115.1964,
112.8298, 118.6427

 15.7227, 14.3726,
14.5957

145.4593,
143.2442, 151.0283

 9.4177, 8.3803,
8.3927

180.6063,
178.6850, 188.8286

 5.0739, 4.3392,
4.2559

221.0025,
219.5367, 232.4618

 2.3259, 1.8651,
1.7667

267.0135,

 0.8079, 0.5273,

266.1836, 282.3468

0.4059

319.0045,
319.0102, 338.9018

■ 0.0000, 0.0000,
0.0000

■ 50.0580, 47.9013,
49.7875

■ 50.0580, 47.9013,
49.7875

■ 44.5224, 39.6287,
39.3138

■ 56.4752, 57.5392,
61.7798

■ 39.8260, 32.6535,
30.2950

■ 63.8060, 68.5935,
75.3447

■ 35.9288, 26.9118,
22.6675

■ 72.0860, 81.1204,
90.5376

■ 32.7859, 22.3316,
16.3618

■ 79.8604, 92.1977,
106.9142

■ 30.3481, 18.8335,
11.3022

■ 80.1046, 92.2954,
108.2006

■ 28.5601, 16.3282,
7.4056

■ 27.3583, 14.7118,
4.5783

■ 26.6654, 13.8566,
2.7117

■ 26.4735, 13.6269,
2.1723

Harmonies

Analogous

The Analogous color harmony consists of three colors that are next to each other on the color wheel.



49.8795, 47.9013, 56.4685



50.0580, 47.9013, 49.7875



48.9922, 47.9013, 44.2305

Triad

The Triadic color harmony groups three colors that are evenly spaced from another and form a triangle on the color wheel.



50.0580, 47.9013, 49.7875



42.6699, 47.9013, 43.0650



44.0785, 47.9013, 65.1967

Complementary

The Complementary color scheme is a pair of colors which are on the opposite of each other on the color wheel.



50.0580, 47.9013, 49.7875



51.7263, 59.2399, 66.4687

Split Complementary

Split-complementary colors differ from the complementary color scheme. The scheme consists of three colors, the original color and two neighbors of the complement color.



42.2325, 47.9013, 60.9767



50.0580, 47.9013, 49.7875



41.4386, 47.9013, 48.0696

Square

The Square scheme is like the rectangle color scheme, but the four colors are evenly spaced on the color wheel.



50.0580, 47.9013, 49.7875



44.6939, 47.9013, 40.5746



41.2813, 47.9013, 54.5992



46.3739, 47.9013, 65.7558

Rectangle

The Rectangle color scheme consists of four colors that form a rectangle on the color wheel.



50.0580, 47.9013, 49.7875



47.7400, 47.9013, 41.7643



41.2813, 47.9013, 54.5992



43.3869, 47.9013, 64.1435

Sweetspot

The Sweet Spot groups the original color and five complimentary colors.



50.0593, 47.9034, 49.7885



89.3645, 91.4323, 98.3623



52.1020, 48.5787, 66.9525



18.9630, 19.3224, 20.7475



0.0000, 0.0000, 0.0000



20.3446, 21.4041, 23.3091

Same Dimension

The Same Dimension uses a secret algorithm to generate beautiful new colors.



50.0593, 47.9034, 49.7885



75.3804, 70.4425, 72.1877



52.1370, 52.7009, 48.5014



11.8662, 11.8312, 12.5710



16.3421, 8.4097, 1.4417



0.9336, 0.4781, 0.1850

Inverse Universe

The Inverse Universe completely reimagines the original color for something new.



50.0593, 47.9034, 49.7885



75.3804, 70.4425, 72.1877



49.3584, 53.7223, 68.0899



11.8662, 11.8312, 12.5710



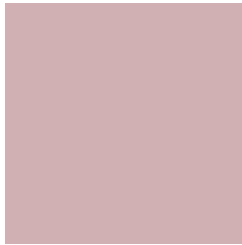
16.3421, 8.4097, 1.4417



0.9336, 0.4781, 0.1850

Previews

White Background



This preview shows how the XYZ color 50.0580, 47.9013, 49.7875 looks on a white background.

Color Contrast Check

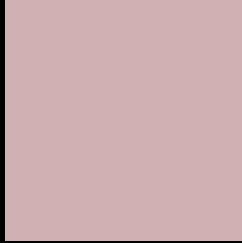
Large Text (above 18pt) WCAG AA × Fail

Any Text WCAG AA × Fail

Large Text (above 18pt) WCAG AAA × Fail

Any Text WCAG AAA × Fail

Black Background



This preview shows how the XYZ color 50.0580, 47.9013, 49.7875 looks on a black background.

Color Contrast Check

Large Text (above 18pt) WCAG AA ✓ Pass

Any Text WCAG AA ✓ Pass

Large Text (above 18pt) WCAG AAA ✓ Pass

Any Text WCAG AAA ✓ Pass

If you want to check with other color combinations, try the [Color Contrast Checker](#).

XYZ 50.0580, 47.9013, 49.7875

Background



This preview shows how black text looks on a background with the XYZ color 50.0580, 47.9013, 49.7875.



This preview shows how white text looks on a background with the XYZ color 50.0580, 47.9013,

49.7875.

Color Blindness Simulation

Color vision deficiency is a very complex topic, and I could not describe the different causes any better than Wikipedia does, so if you want to learn more, you should check out their [article about color blindness](#).

Dichromacy



Original Color

50.0580, 47.9013, 49.7875

Protanopia

46.0787, 47.8925, 52.1630

Deuteranopia

49.0605, 47.9734, 49.8541



Tritanopia

50.9854, 47.9924, 54.1532

Trichromacy



Original Color

50.0580, 47.9013, 49.7875

Protanomaly

47.3742, 47.6635, 51.5028

Deuteranomaly

49.4140, 47.8614, 49.8138

Tritanomaly

50.6653, 47.8644, 52.4673

Monochromacy



Original Color

50.0580, 47.9013, 49.7875

Achromatopsia

46.6715, 49.1021, 53.4722

Achromatomaly

47.6278, 48.3859, 52.1766

CSS Examples

Text

The CSS property to change the color of the text to XYZ 50.0580, 47.9013, 49.7875 is called "color". The color property can be set on classes, ids or directly on the HTML element.

This example shows how text in the color `rgb(209, 176, 180)` looks like.

```
.text, #text, p{  
    color:rgb(209, 176, 180)  
}
```

If you want to add a text shadow in that color use the text-shadow property, you can generate a text shadow directly with our [CSS Text Shadow Generator](#).

Here you see how black text with a 4 pixel rgb(209, 176, 180) colored shadow looks like.

```
.shadow{ text-shadow: 4px 4px 2px rgb(209, 176, 180) }
```

Border

The CSS property to change the border of an element to XYZ 50.0580, 47.9013, 49.7875 is called "border". The border property can be set on classes, ids or directly on the HTML element.

This example shows the color as border, it can be applied via the CSS property "border" or "border-color".

```
.border, #border, table{ border:4px solid rgb(209, 176, 180) }
```


If only the border color should be changed use the property `border-color`.

```
.border{ border-color:rgb(209, 176, 180) }
```

If you want to add a box shadow in that color use:

Here you see how a box with a 4 pixel `rgb(209, 176, 180)` colored shadow looks like.

```
.boxshadow{ -moz-box-shadow:4px 4px 4px  
4px rgb(209, 176, 180); -webkit-box-  
shadow:4px 4px 4px 4px rgb(209, 176, 180);  
box-shadow:4px 4px 4px 4px rgb(209, 176,  
180) }
```

Background

The CSS property to change the background color of an element to XYZ 50.0580, 47.9013, 49.7875 is called "background". The background property can be set on classes, ids or directly on the HTML element.

```
.background, #background, body{  
background: rgb(209, 176, 180) }
```

If only the background color should be changed can be used:

```
.background{ background-color: rgb(209,  
176, 180) }
```

This example shows the color as background, it is applied via the CSS property "background".

To optimize and compress your CSS code, you can use our [online CSS compressor and optimizer](#) based on csstidy. If you want to create a linear or radial gradient as background or border, check our [CSS Gradient Generator](#).

Hey! You found this booklet interesting? Support Converting Colors with the new Membership Option!

The pro membership hides all ads, plus gives you double the colors in the color bucket, and more awesome pro features!

[Learn more, Memberships starting at \\$2.50/m!](#)

**Follow me
on Twitter!**

@ConvertingColor