

Converting Colors

XYZ(50.1414, 50.9505, 51.0732)

Have a look what the booklet for
XYZ(50.1414, 50.9505, 51.0732)
contains.

XYZ(49.9868, 50.8715, 50.9007)	3
<i>Conversions</i>	4
<i>Details</i>	6
<i>Harmonies</i>	12
<i>Previews</i>	24
<i>Color Blindness Simulation</i>	28
<i>CSS Examples</i>	31

Color

**XYZ(49.9868, 50.8715,
50.9007)**

Conversions

Conversions Part 1

Format	Color
Hex	C9BAB5
RGB	201, 186, 181
RGB Percent	79%, 73%, 71%
CMY	0.2118, 0.2706, 0.2902
CMYK	0.00, 0.07, 0.10, 0.21
HSL	15°, 16%, 75%
HSV	15°, 10%, 79%
XYZ	49.9868, 50.8715, 50.9007
YIQ	189.9150, 10.5450, 1.6250

Conversions

Conversions Part 2

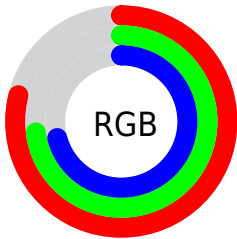
Format	Color
R _Y B	201, 188, 181
Decimal	13220533
CIE Lab	76.60, 4.45, 4.44
CIE LCh	77, 6.283, 44.914
Yxy	50.8715, 0.3294, 0.3352
Android (android.graphics.Color)	4291410613 (0xFFC9BAB5)
YUV	189.9150, -4.3951, 9.7215
Hunter-Lab	71.3243, 0.2823, 7.6146

Details

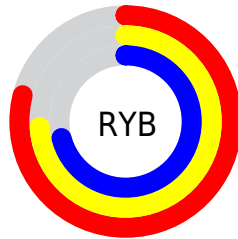
The XYZ color **49.9868, 50.8715, 50.9007** is a light color, and the websafe version is hex **CCCCCC**. A complement of this color would be **49.3385, 53.5198, 62.9889**, and the grayscale version is **48.9160, 51.4635, 56.0437**.

A 20% lighter version of the original color is **88.2782, 90.8787, 93.0093**, and **24.3164, 24.5366, 23.8765** is the 20% darker color. If you saturate the color by 10%, you get **45.0623, 44.0880, 39.8074**, and if you desaturate by 10%, it is **55.5467, 58.4484, 63.6750**.

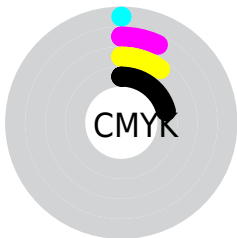
Distribution



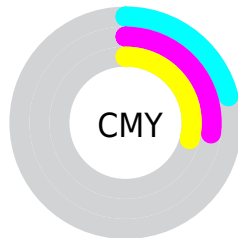
- Red (79%)
- Green (73%)
- Blue (71%)



- Red (79%)
- Yellow (74%)
- Blue (71%)



- Cyan (0%)
- Magenta (7%)
- Yellow (10%)
- Black (21%)



- Cyan (21%)
- Magenta (27%)
- Yellow (29%)

Brightness & Saturation Gradients

These gradients show how the XYZ color 49.9868, 50.8715, 50.9007 changes by changing the brightness by 10 percent. The first figure shows a shift by +10% for each color and the second figure -10%.

Similar to the brightness gradients but the following saturation gradients show a change of the XYZ color 49.9868, 50.8715, 50.9007 by changing the saturation by 10% instead.

■ 49.9868, 50.8715,
50.9007

■ 49.9868, 50.8715,
50.9007

377.0672,
390.0643, 407.0134

■ 35.6207, 36.1064,
35.7534

■ 89.3473, 91.4648,
92.9180

■ 24.3101, 24.5163,
23.9556

115.0723,
118.0617, 120.6250

■ 15.6898, 15.7171,
15.0888

145.3143,
149.3714, 153.3558

■ 9.3944, 9.3242,
8.7344

180.4387,
185.7782, 191.5287

■ 5.0585, 4.9532,
4.4739

220.8109,
227.6665, 235.5624

■ 2.3167, 2.2198,
1.8888

266.7961,

■ 0.8032, 0.7308,

275.4207, 285.8754

0.4856

318.7597,
329.4251, 342.8862

■ 0.0000, 0.0000,
0.0000

■ 49.9868, 50.8715,
50.9007

■ 49.9868, 50.8715,
50.9007

■ 45.0623, 44.0880,
39.8074

■ 55.5467, 58.4484,
63.6750

■ 40.7459, 38.0654,
30.3216

■ 61.7595, 66.8364,
78.1932

■ 37.0145, 32.7787,
22.3693

■ 68.6473, 76.0613,
94.5188

■ 33.8420, 28.1993,
15.8690

■ 75.1820, 85.7264,
107.1921

■ 31.2002, 24.2963,
10.7320

■ 77.8977, 91.1576,
108.0973

■ 29.0581, 21.0366,
6.8597

■ 27.3815, 18.3843,
4.1398

■ 26.1309, 16.2993,
2.4401

■ 25.2443, 14.7300,
1.5155

Harmonies

Analogous

The Analogous color harmony consists of three colors that are next to each other on the color wheel.



50.5918, 50.8715, 53.7244



49.9868, 50.8715, 50.9007



48.9485, 50.8715, 49.3137

Triad

The Triadic color harmony groups three colors that are evenly spaced from another and form a triangle on the color wheel.



49.9868, 50.8715, 50.9007



46.1807, 50.8715, 53.7060



48.9419, 50.8715, 61.9524

Complementary

The Complementary color scheme is a pair of colors which are on the opposite of each other on the color wheel.



49.9868, 50.8715, 50.9007



49.3385, 53.5198, 62.9889

Split Complementary

Split-complementary colors differ from the complementary color scheme. The scheme consists of three colors, the original color and two neighbors of the complement color.



47.7600, 50.8715, 61.9469



49.9868, 50.8715, 50.9007



46.1789, 50.8715, 57.0905

Square

The Square scheme is like the rectangle color scheme, but the four colors are evenly spaced on the color wheel.



49.9868, 50.8715, 50.9007



46.7576, 50.8715, 50.8876



46.7529, 50.8715, 60.1367



49.9819, 50.8715, 60.1513

Rectangle

The Rectangle color scheme consists of four colors that form a rectangle on the color wheel.



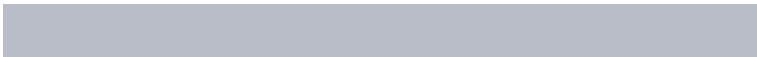
49.9868, 50.8715, 50.9007



48.1565, 50.8715, 49.1276



46.7529, 50.8715, 60.1367



48.5477, 50.8715, 62.1640

Sweetspot

The Sweet Spot groups the original color and five complimentary colors.



49.9882, 50.8737, 50.9018



92.0399, 95.9116, 101.9409



50.5757, 49.4515, 59.1047



19.5319, 20.2998, 21.4314



0.0000, 0.0000, 0.0000



20.3446, 21.4041, 23.3091

Same Dimension

The Same Dimension uses a secret algorithm to generate beautiful new colors.



49.9882, 50.8737, 50.9018



83.6211, 84.4080, 82.6908



52.1685, 55.2342, 51.6285



10.8459, 11.0609, 11.1261



15.9323, 9.3817, 0.9711



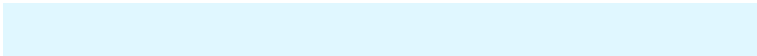
0.8141, 0.5636, 0.0659

Inverse Universe

The Inverse Universe completely reimagines the original color for something new.



49.3385, 53.5198, 62.9889



82.2809, 89.8638, 107.6165



47.1583, 49.1594, 62.2621



10.7134, 11.6008, 13.5920



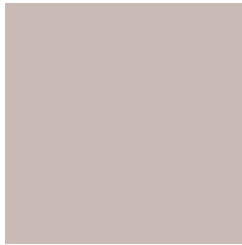
13.6340, 16.6620, 37.2419



0.7005, 0.8989, 1.7817

Previews

White Background



This preview shows how the XYZ color 49.9868, 50.8715, 50.9007 looks on a white background.

Color Contrast Check

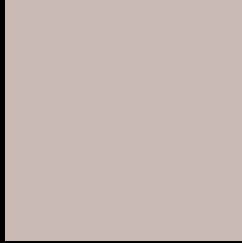
Large Text (above 18pt) WCAG AA × Fail

Any Text WCAG AA × Fail

Large Text (above 18pt) WCAG AAA × Fail

Any Text WCAG AAA × Fail

Black Background



This preview shows how the XYZ color 49.9868, 50.8715, 50.9007 looks on a black background.

Color Contrast Check

Large Text (above 18pt) WCAG AA ✓ Pass

Any Text WCAG AA ✓ Pass

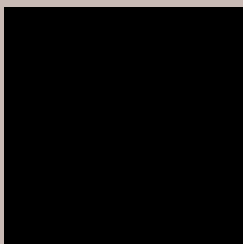
Large Text (above 18pt) WCAG AAA ✓ Pass

Any Text WCAG AAA ✓ Pass

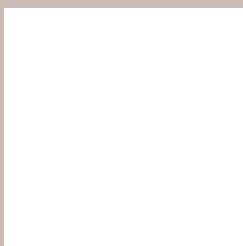
If you want to check with other color combinations, try the [Color Contrast Checker](#).

XYZ 49.9868, 50.8715, 50.9007

Background



This preview shows how black text looks on a background with the XYZ color 49.9868, 50.8715, 50.9007.



This preview shows how white text looks on a background with the XYZ color 49.9868, 50.8715,

Color Blindness Simulation

Color vision deficiency is a very complex topic, and I could not describe the different causes any better than Wikipedia does, so if you want to learn more, you should check out their [article about color blindness](#).

Dichromacy



Original Color

49.9868, 50.8715, 50.9007

Protanopia

48.6749, 50.8132, 51.4985

Deuteranopia

51.9553, 50.9460, 51.3512



Tritanopia

51.7551, 50.6407, 60.4729

Trichromacy



Original Color

49.9868, 50.8715, 50.9007

Protanomaly

49.2398, 50.7884, 51.4639

Deuteranomaly

51.3161, 50.9238, 51.3806

Tritanomaly

51.0120, 50.6433, 56.9557

Monochromacy



Original Color

49.9868, 50.8715, 50.9007

Achromatopsia

48.9429, 51.4918, 56.0745

Achromatomaly

49.4154, 51.4524, 54.3405

CSS Examples

Text

The CSS property to change the color of the text to XYZ 49.9868, 50.8715, 50.9007 is called "color". The color property can be set on classes, ids or directly on the HTML element.

This example shows how text in the color rgb(201, 186, 181) looks like.

```
.text, #text, p{  
    color:rgb(201, 186, 181)  
}
```

If you want to add a text shadow in that color use the text-shadow property, you can generate a text shadow directly with our [CSS Text Shadow Generator](#).

Here you see how black text with a 4 pixel rgb(201, 186, 181) colored shadow looks like.

```
.shadow{ text-shadow: 4px 4px 2px rgb(201, 186, 181) }
```

Border

The CSS property to change the border of an element to XYZ 49.9868, 50.8715, 50.9007 is called "border". The border property can be set on classes, ids or directly on the HTML element.

This example shows the color as border, it can be applied via the CSS property "border" or "border-color".

```
.border, #border, table{ border:4px solid rgb(201, 186, 181) }
```


If only the border color should be changed use the property `border-color`.

```
.border{ border-color:rgb(201, 186, 181) }
```

If you want to add a box shadow in that color use:

Here you see how a box with a 4 pixel `rgb(201, 186, 181)` colored shadow looks like.

```
.boxshadow{ -moz-box-shadow:4px 4px 4px  
4px rgb(201, 186, 181); -webkit-box-  
shadow:4px 4px 4px 4px rgb(201, 186, 181);  
box-shadow:4px 4px 4px 4px rgb(201, 186,  
181) }
```

Background

The CSS property to change the background color of an element to XYZ 49.9868, 50.8715, 50.9007 is called "background". The background property can be set on classes, ids or directly on the HTML element.

```
.background, #background, body{  
background: rgb(201, 186, 181) }
```

If only the background color should be changed can be used:

```
.background{ background-color: rgb(201,  
186, 181) }
```

This example shows the color as background, it is applied via the CSS property "background".

To optimize and compress your CSS code, you can use our [online CSS compressor and optimizer](#) based on csstidy. If you want to create a linear or radial gradient as background or border, check our [CSS Gradient Generator](#).

Hey! You found this booklet interesting? Support Converting Colors with the new Membership Option!

The pro membership hides all ads, plus gives you double the colors in the color bucket, and more awesome pro features!

[Learn more, Memberships starting at \\$2.50/m!](#)

**Follow me
on Twitter!**

@ConvertingColor