

Converting Colors

XYZ(50.1511, 50.7184, 50.8631)

Have a look what the booklet for
XYZ(50.1511, 50.7184, 50.8631)
contains.

XYZ(50.0466, 50.5907, 50.8433)	3
<i>Conversions</i>	4
<i>Details</i>	6
<i>Harmonies</i>	12
<i>Previews</i>	24
<i>Color Blindness Simulation</i>	28
<i>CSS Examples</i>	31

Color

**XYZ(50.0466, 50.5907,
50.8433)**

Conversions

Conversions Part 1

Format	Color
Hex	CAB9B5
RGB	202, 185, 181
RGB Percent	79%, 73%, 71%
CMY	0.2078, 0.2745, 0.2902
CMYK	0.00, 0.08, 0.10, 0.21
HSL	11°, 17%, 75%
HSV	11°, 10%, 79%
XYZ	50.0466, 50.5907, 50.8433
YIQ	189.6270, 11.4160, 2.3600

Conversions

Conversions Part 2

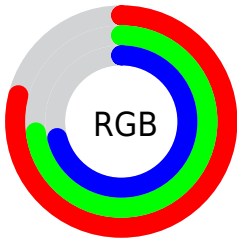
Format	Color
R _Y B	202, 186, 181
Decimal	13285813
CIE Lab	76.43, 5.35, 4.20
CIE LCh	76, 6.798, 38.155
Yxy	50.5907, 0.3304, 0.3340
Android (android.graphics.Color)	4291475893 (0xFFCAB9B5)
YUV	189.6270, -4.2531, 10.8511
Hunter-Lab	71.1271, 1.1240, 7.4072

Details

The XYZ color **50.0466, 50.5907, 50.8433** is a light color, and the websafe version is hex **CCCCCC**. A complement of this color would be **49.9106, 54.4752, 63.7619**, and the grayscale version is **48.7493, 51.2881, 55.8527**.

A 20% lighter version of the original color is **87.9814, 90.2850, 92.9104**, and **24.3603, 24.3569, 23.8395** is the 20% darker color. If you saturate the color by 10%, you get **44.8969, 43.3710, 39.6315**, and if you desaturate by 10%, it is **55.8930, 58.7217, 63.7712**.

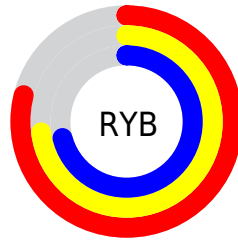
Distribution



Red (79%)

Green (73%)

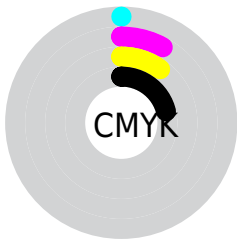
Blue (71%)



Red (79%)

Yellow (73%)

Blue (71%)

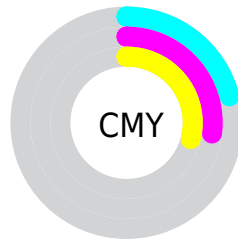


Cyan (0%)

Magenta (8%)

Yellow (10%)

Black (21%)



Cyan (21%)

Magenta (27%)

Yellow (29%)

Brightness & Saturation Gradients

These gradients show how the XYZ color 50.0466, 50.5907, 50.8433 changes by changing the brightness by 10 percent. The first figure shows a shift by +10% for each color and the second figure -10%.

Similar to the brightness gradients but the following saturation gradients show a change of the XYZ color 50.0466, 50.5907, 50.8433 by changing the saturation by 10% instead.

■ 50.0466, 50.5907,
50.8433

■ 50.0466, 50.5907,
50.8433

377.2971,
388.9715, 406.7838

■ 35.6684, 35.8830,
35.7081

■ 89.4353, 91.0495,
92.8322

■ 24.3471, 24.3438,
23.9209

115.1765,
117.5693, 120.5230

■ 15.7174, 15.5889,
15.0633

145.4361,
148.7953, 153.2360

■ 9.4140, 9.2337,
8.7167

180.5794,
185.1118, 191.3898

■ 5.0715, 4.8939,
4.4626

220.9718,
226.9033, 235.4030

■ 2.3244, 2.1852,
1.8824

266.9787,

■ 0.8071, 0.7119,

274.5542, 285.6940

0.4815

318.9653,
328.4488, 342.6814

■ 0.0000, 0.0000,
0.0000

■ 50.0466, 50.5907,
50.8433

■ 50.0466, 50.5907,
50.8433

■ 44.8969, 43.3710,
39.6315

■ 55.8930, 58.7217,
63.7712

■ 40.4136, 37.0242,
30.0603

■ 62.4565, 67.7874,
78.4799

■ 36.5702, 31.5190,
22.0535

■ 69.7622, 77.8187,
95.0347

■ 33.3369, 26.8198,
15.5273

■ 76.7176, 88.3972,
107.6267

■ 30.6816, 22.8882,
10.3904

■ 78.1674, 91.2967,
108.1099

■ 28.5688, 19.6829,
6.5408

■ 26.9591, 17.1582,
3.8630

■ 25.8075, 15.2633,
2.2201

■ 25.0670, 13.9759,
1.3764

Harmonies

Analogous

The Analogous color harmony consists of three colors that are next to each other on the color wheel.



50.5629, 50.5907, 54.0907



50.0466, 50.5907, 50.8433



49.0067, 50.5907, 48.7970

Triad

The Triadic color harmony groups three colors that are evenly spaced from another and form a triangle on the color wheel.



50.0466, 50.5907, 50.8433



45.8362, 50.5907, 52.5030



48.4350, 50.5907, 62.3617

Complementary

The Complementary color scheme is a pair of colors which are on the opposite of each other on the color wheel.



50.0466, 50.5907, 50.8433



49.9106, 54.4752, 63.7619

Split Complementary

Split-complementary colors differ from the complementary color scheme. The scheme consists of three colors, the original color and two neighbors of the complement color.



47.1748, 50.5907, 61.8905



50.0466, 50.5907, 50.8433



45.6893, 50.5907, 56.0907

Square

The Square scheme is like the rectangle color scheme, but the four colors are evenly spaced on the color wheel.



50.0466, 50.5907, 50.8433



46.5802, 50.5907, 49.7252



46.1752, 50.5907, 59.5556



49.6217, 50.5907, 60.8160

Rectangle

The Rectangle color scheme consists of four colors that form a rectangle on the color wheel.



50.0466, 50.5907, 50.8433



48.1642, 50.5907, 48.3349



46.1752, 50.5907, 59.5556



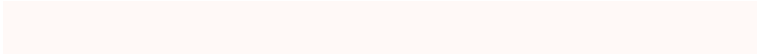
48.0057, 50.5907, 62.4352

Sweetspot

The Sweet Spot groups the original color and five complimentary colors.



50.0480, 50.5929, 50.8444



91.8991, 95.6301, 101.8940



51.0920, 49.6892, 60.4156



19.4940, 20.2241, 21.4188



0.0000, 0.0000, 0.0000



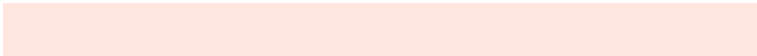
20.3446, 21.4041, 23.3091

Same Dimension

The Same Dimension uses a secret algorithm to generate beautiful new colors.



50.0480, 50.5929, 50.8444



83.1108, 83.3875, 82.5207



52.2919, 55.0807, 51.5923



11.3826, 11.5541, 11.7097



16.1793, 9.0916, 0.9021



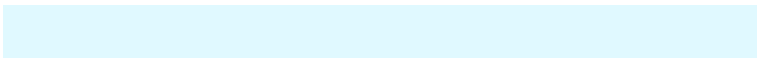
0.8877, 0.5751, 0.0642

Inverse Universe

The Inverse Universe completely reimagines the original color for something new.



49.9106, 54.4752, 63.7619



82.8416, 90.9854, 107.8035



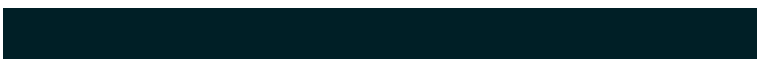
47.6260, 49.9058, 63.0003



11.3544, 12.3493, 14.3556



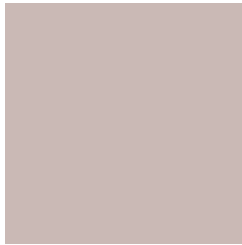
15.4058, 19.8356, 38.9730



0.8428, 1.1193, 2.0266

Previews

White Background



This preview shows how the XYZ color 50.0466, 50.5907, 50.8433 looks on a white background.

Color Contrast Check

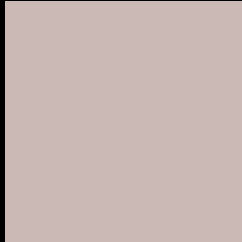
Large Text (above 18pt) WCAG AA × Fail

Any Text WCAG AA × Fail

Large Text (above 18pt) WCAG AAA × Fail

Any Text WCAG AAA × Fail

Black Background



This preview shows how the XYZ color 50.0466, 50.5907, 50.8433 looks on a black background.

Color Contrast Check

Large Text (above 18pt) WCAG AA ✓ Pass

Any Text WCAG AA ✓ Pass

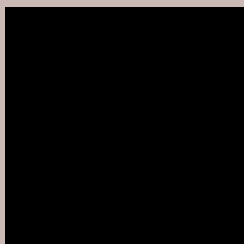
Large Text (above 18pt) WCAG AAA ✓ Pass

Any Text WCAG AAA ✓ Pass

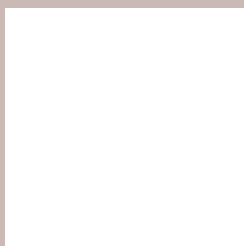
If you want to check with other color combinations, try the [Color Contrast Checker](#).

XYZ 50.0466, 50.5907, 50.8433

Background



This preview shows how black text looks on a background with the XYZ color 50.0466, 50.5907, 50.8433.



This preview shows how white text looks on a background with the XYZ color 50.0466, 50.5907,

Color Blindness Simulation

Color vision deficiency is a very complex topic, and I could not describe the different causes any better than Wikipedia does, so if you want to learn more, you should check out their [article about color blindness](#).

Dichromacy



Original Color

50.0466, 50.5907, 50.8433

Protanopia

48.5228, 50.7228, 52.0328

Deuteranopia

51.4659, 50.3886, 51.2694



Tritanopia

51.9134, 50.7356, 59.8801

Trichromacy



Original Color

50.0466, 50.5907, 50.8433

Protanomaly

48.9788, 50.6538, 51.4517

Deuteranomaly

50.8306, 50.3662, 51.2986

Tritanomaly

51.1731, 50.7391, 56.3867

Monochromacy



Original Color

50.0466, 50.5907, 50.8433

Achromatopsia

48.9429, 51.4918, 56.0745

Achromatomaly

49.2010, 51.0236, 54.2691

CSS Examples

Text

The CSS property to change the color of the text to XYZ 50.0466, 50.5907, 50.8433 is called "color". The color property can be set on classes, ids or directly on the HTML element.

This example shows how text in the color `rgb(202, 185, 181)` looks like.

```
.text, #text, p{  
    color:rgb(202, 185, 181)  
}
```

If you want to add a text shadow in that color use the text-shadow property, you can generate a text shadow directly with our [CSS Text Shadow Generator](#).

Here you see how black text with a 4 pixel rgb(202, 185, 181) colored shadow looks like.

```
.shadow{ text-shadow: 4px 4px 2px rgb(202, 185, 181) }
```

Border

The CSS property to change the border of an element to XYZ 50.0466, 50.5907, 50.8433 is called "border". The border property can be set on classes, ids or directly on the HTML element.

This example shows the color as border, it can be applied via the CSS property "border" or "border-color".

```
.border, #border, table{ border:4px solid rgb(202, 185, 181) }
```


If only the border color should be changed use the property `border-color`.

```
.border{ border-color:rgb(202, 185, 181) }
```

If you want to add a box shadow in that color use:

Here you see how a box with a 4 pixel `rgb(202, 185, 181)` colored shadow looks like.

```
.boxshadow{ -moz-box-shadow:4px 4px 4px  
4px rgb(202, 185, 181); -webkit-box-  
shadow:4px 4px 4px 4px rgb(202, 185, 181);  
box-shadow:4px 4px 4px 4px rgb(202, 185,  
181) }
```

Background

The CSS property to change the background color of an element to XYZ 50.0466, 50.5907, 50.8433 is called "background". The background property can be set on classes, ids or directly on the HTML element.

```
.background, #background, body{  
background: rgb(202, 185, 181) }
```

If only the background color should be changed can be used:

```
.background{ background-color: rgb(202,  
185, 181) }
```

This example shows the color as background, it is applied via the CSS property "background".

To optimize and compress your CSS code, you can use our [online CSS compressor and optimizer](#) based on csstidy. If you want to create a linear or radial gradient as background or border, check our [CSS Gradient Generator](#).

Hey! You found this booklet interesting? Support Converting Colors with the new Membership Option!

The pro membership hides all ads, plus gives you double the colors in the color bucket, and more awesome pro features!

[Learn more, Memberships starting at \\$2.50/m!](#)

**Follow me
on Twitter!**

@ConvertingColor