

Converting Colors

XYZ(50.2742, 49.5528, 47.4724)

Have a look what the booklet for
XYZ(50.2742, 49.5528, 47.4724)
contains.

XYZ(50.2742, 49.5528, 47.4724)	3
<i>Conversions</i>	4
<i>Details</i>	6
<i>Harmonies</i>	12
<i>Previews</i>	24
<i>Color Blindness Simulation</i>	28
<i>CSS Examples</i>	31

Color

**XYZ(50.2742, 49.5528,
47.4724)**

Conversions

Conversions Part 1

Format	Color
Hex	D0B5AF
RGB	208, 181, 175
RGB Percent	82%, 71%, 69%
CMY	0.1843, 0.2902, 0.3137
CMYK	0.00, 0.13, 0.16, 0.18
HSL	11°, 26%, 75%
HSV	11°, 16%, 82%
XYZ	50.2742, 49.5528, 47.4724
YIQ	188.3890, 18.0180, 3.8580

Conversions

Conversions Part 2

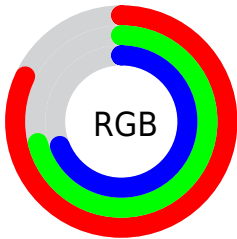
Format	Color
R _Y B	208, 182, 175
Decimal	13677999
CIE Lab	75.79, 8.70, 6.61
CIE LCh	76, 10.927, 37.227
Yxy	49.5528, 0.3413, 0.3364
Android (android.graphics.Color)	4291868079 (0xFFD0B5AF)
YUV	188.3890, -6.6008, 17.1988
Hunter-Lab	70.3937, 4.2931, 9.2914

Details

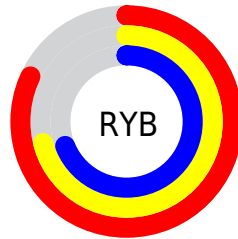
The XYZ color **50.2742, 49.5528, 47.4724** is a light color, and the websafe version is hex **CCCCCC**. A complement of this color would be **50.1847, 55.9080, 67.8213**, and the grayscale version is **48.0515, 50.5539, 55.0532**.

A 20% lighter version of the original color is **85.8071, 87.5415, 87.2376**, and **24.4312, 23.6407, 22.0143** is the 20% darker color. If you saturate the color by 10%, you get **45.1357, 42.2969, 36.4451**, and if you desaturate by 10%, it is **56.1527, 57.7842, 60.3001**.

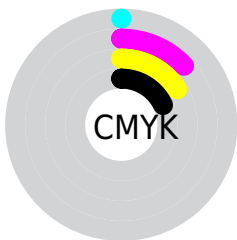
Distribution



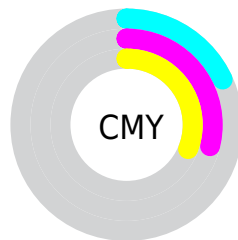
- Red (82%)
- Green (71%)
- Blue (69%)



- Red (82%)
- Yellow (71%)
- Blue (69%)



- Cyan (0%)
- Magenta (13%)
- Yellow (16%)
- Black (18%)



- Cyan (18%)
- Magenta (29%)
- Yellow (31%)

Brightness & Saturation Gradients

These gradients show how the XYZ color 50.2742, 49.5528, 47.4724 changes by changing the brightness by 10 percent. The first figure shows a shift by +10% for each color and the second figure -10%.

Similar to the brightness gradients but the following saturation gradients show a change of the XYZ color 50.2742, 49.5528, 47.4724 by changing the saturation by 10% instead.

■ 50.2742, 49.5528,
47.4724

■ 50.2742, 49.5528,
47.4724

378.1716,
384.9145, 393.1452

■ 35.8500, 35.0582,
33.0522

■ 89.7704, 89.5119,
87.7757

■ 24.4879, 23.7077,
21.8950

115.5731,
115.7452, 114.4959

■ 15.8227, 15.1169,
13.5822

145.8994,
146.6603, 146.1532

■ 9.4888, 8.9015,
7.6952

181.1146,
182.6414, 183.1662

■ 5.1210, 4.6770,
3.8156

221.5840,
224.0729, 225.9533

■ 2.3539, 2.0590,
1.5247

267.6731,

■ 0.8220, 0.6414,

271.3394, 274.9332

0.2363

319.7472,
324.8251, 330.5243

■ 0.0000, 0.0000,
0.0000

■ 50.2742, 49.5528,
47.4724

■ 50.2742, 49.5528,
47.4724

■ 45.1357, 42.2969,
36.4451

■ 56.1527, 57.7842,
60.3001

■ 40.7036, 35.9737,
27.1342

■ 62.7951, 67.0187,
75.0005

■ 36.9478, 30.5472,
19.4542

■ 70.2289, 77.2909,
91.6460

■ 33.8343, 25.9764,
13.3104

■ 77.9596, 88.4238,
107.5663

■ 31.3261, 22.2171,
8.5987

■ 79.8227, 92.1500,
108.1874

■ 29.3822, 19.2210,
5.2018

■ 27.9563, 16.9344,
2.9838

■ 26.9935, 15.2963,
1.7768

■ 26.7007, 14.7862,
1.4467

Harmonies

Analogous

The Analogous color harmony consists of three colors that are next to each other on the color wheel.



51.0765, 49.5528, 52.5609



50.2742, 49.5528, 47.4724



48.6250, 49.5528, 44.2927

Triad

The Triadic color harmony groups three colors that are evenly spaced from another and form a triangle on the color wheel.



50.2742, 49.5528, 47.4724



43.5915, 49.5528, 49.7435



47.5910, 49.5528, 65.8174

Complementary

The Complementary color scheme is a pair of colors which are on the opposite of each other on the color wheel.



50.2742, 49.5528, 47.4724



50.1847, 55.9080, 67.8213

Split Complementary

Split-complementary colors differ from the complementary color scheme. The scheme consists of three colors, the original color and two neighbors of the complement color.



45.6042, 49.5528, 64.9283



50.2742, 49.5528, 47.4724



43.3325, 49.5528, 55.3727

Square

The Square scheme is like the rectangle color scheme, but the four colors are evenly spaced on the color wheel.



50.2742, 49.5528, 47.4724



44.7771, 49.5528, 45.5367



44.0593, 49.5528, 61.0015



49.4987, 49.5528, 63.3507

Rectangle

The Rectangle color scheme consists of four colors that form a rectangle on the color wheel.



50.2742, 49.5528, 47.4724



47.2875, 49.5528, 43.5447



44.0593, 49.5528, 61.0015



46.9099, 49.5528, 65.9039

Sweetspot

The Sweet Spot groups the original color and five complimentary colors.



50.2756, 49.5550, 47.4734



89.8270, 92.7305, 97.3658



52.0630, 48.3586, 62.7787



19.0749, 19.6365, 20.5065



0.0000, 0.0000, 0.0000



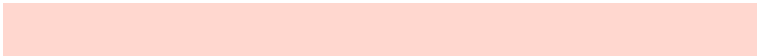
20.3446, 21.4041, 23.3091

Same Dimension

The Same Dimension uses a secret algorithm to generate beautiful new colors.



50.2756, 49.5550, 47.4734



76.8409, 74.5298, 69.0792



53.7171, 56.4382, 48.6206



11.9802, 12.1511, 12.3260



16.6925, 9.3180, 0.9188



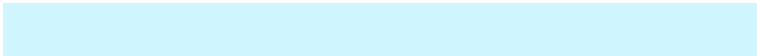
0.9871, 0.6285, 0.0693

Inverse Universe

The Inverse Universe completely reimagines the original color for something new.



50.1847, 55.9080, 67.8213



76.6688, 86.4451, 107.2524



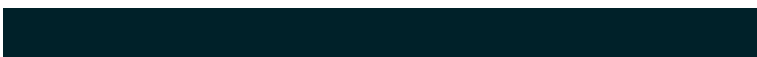
46.6239, 48.7866, 66.6344



11.9679, 13.0260, 15.1271



16.1386, 20.9239, 40.3806



0.9511, 1.2675, 2.2741

Previews

White Background



This preview shows how the XYZ color 50.2742, 49.5528, 47.4724 looks on a white background.

Color Contrast Check

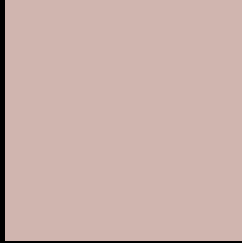
Large Text (above 18pt) WCAG AA × Fail

Any Text WCAG AA × Fail

Large Text (above 18pt) WCAG AAA × Fail

Any Text WCAG AAA × Fail

Black Background



This preview shows how the XYZ color 50.2742, 49.5528, 47.4724 looks on a black background.

Color Contrast Check

Large Text (above 18pt) WCAG AA ✓ Pass

Any Text WCAG AA ✓ Pass

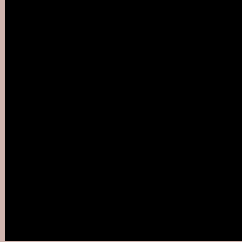
Large Text (above 18pt) WCAG AAA ✓ Pass

Any Text WCAG AAA ✓ Pass

If you want to check with other color combinations, try the [Color Contrast Checker](#).

XYZ 50.2742, 49.5528, 47.4724

Background



This preview shows how black text looks on a background with the XYZ color 50.2742, 49.5528, 47.4724.



This preview shows how white text looks on a background with the XYZ color 50.2742, 49.5528,

Color Blindness Simulation

Color vision deficiency is a very complex topic, and I could not describe the different causes any better than Wikipedia does, so if you want to learn more, you should check out their [article about color blindness](#).

Dichromacy



Original Color

50.2742, 49.5528, 47.4724

Protanopia

47.3330, 49.5386, 49.1867

Deuteranopia

50.3536, 49.2930, 47.4180



Tritanopia

52.0132, 49.3482, 56.6529

Trichromacy



Original Color

50.2742, 49.5528, 47.4724

Protanomaly

48.3650, 49.4611, 48.5928

Deuteranomaly

50.3536, 49.2930, 47.4180

Tritanomaly

51.2775, 49.3407, 53.2755

Monochromacy



Original Color

50.2742, 49.5528, 47.4724

Achromatopsia

47.7994, 50.2886, 54.7643

Achromatomaly

48.4019, 49.7189, 51.8454

CSS Examples

Text

The CSS property to change the color of the text to XYZ 50.2742, 49.5528, 47.4724 is called "color". The color property can be set on classes, ids or directly on the HTML element.

This example shows how text in the color `rgb(208, 181, 175)` looks like.

```
.text, #text, p{  
    color:rgb(208, 181, 175)  
}
```

If you want to add a text shadow in that color use the text-shadow property, you can generate a text shadow directly with our [CSS Text Shadow Generator](#).

Here you see how black text with a 4 pixel rgb(208, 181, 175) colored shadow looks like.

```
.shadow{ text-shadow: 4px 4px 2px rgb(208, 181, 175) }
```

Border

The CSS property to change the border of an element to XYZ 50.2742, 49.5528, 47.4724 is called "border". The border property can be set on classes, ids or directly on the HTML element.

This example shows the color as border, it can be applied via the CSS property "border" or "border-color".

```
.border, #border, table{ border:4px solid rgb(208, 181, 175) }
```


If only the border color should be changed use the property `border-color`.

```
.border{ border-color:rgb(208, 181, 175) }
```

If you want to add a box shadow in that color use:

Here you see how a box with a 4 pixel `rgb(208, 181, 175)` colored shadow looks like.

```
.boxshadow{ -moz-box-shadow:4px 4px 4px  
4px rgb(208, 181, 175); -webkit-box-  
shadow:4px 4px 4px 4px rgb(208, 181, 175);  
box-shadow:4px 4px 4px 4px rgb(208, 181,  
175) }
```

Background

The CSS property to change the background color of an element to XYZ 50.2742, 49.5528, 47.4724 is called "background". The background property can be set on classes, ids or directly on the HTML element.

```
.background, #background, body{  
background: rgb(208, 181, 175) }
```

If only the background color should be changed can be used:

```
.background{ background-color: rgb(208,  
181, 175) }
```

This example shows the color as background, it is applied via the CSS property "background".

To optimize and compress your CSS code, you can use our [online CSS compressor and optimizer](#) based on csstidy. If you want to create a linear or radial gradient as background or border, check our [CSS Gradient Generator](#).

Hey! You found this booklet interesting? Support Converting Colors with the new Membership Option!

The pro membership hides all ads, plus gives you double the colors in the color bucket, and more awesome pro features!

[Learn more, Memberships starting at \\$2.50/m!](#)

**Follow me
on Twitter!**

@ConvertingColor