

Converting Colors

XYZ(50.3939, 49.2441, 50.5651)

Have a look what the booklet for
XYZ(50.3939, 49.2441, 50.5651)
contains.

XYZ(50.3939, 49.2441, 50.5651)	3
<i>Conversions</i>	4
<i>Details</i>	6
<i>Harmonies</i>	12
<i>Previews</i>	24
<i>Color Blindness Simulation</i>	28
<i>CSS Examples</i>	31

Color

**XYZ(50.3939, 49.2441,
50.5651)**

Conversions

Conversions Part 1

Format	Color
Hex	CFB4B5
RGB	207, 180, 181
RGB Percent	81%, 71%, 71%
CMY	0.1882, 0.2941, 0.2902
CMYK	0.00, 0.13, 0.13, 0.19
HSL	358°, 22%, 76%
HSV	358°, 13%, 81%
XYZ	50.3939, 49.2441, 50.5651
YIQ	188.1870, 15.7710, 6.0350

Conversions

Conversions Part 2

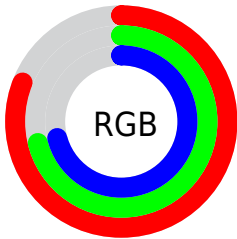
Format	Color
R _Y B	207, 180, 181
Decimal	13612213
CIE Lab	75.60, 9.84, 3.06
CIE LCh	76, 10.308, 17.250
Yxy	49.2441, 0.3355, 0.3279
Android (android.graphics.Color)	4291802293 (0xFFCFB4B5)
YUV	188.1870, -3.5432, 16.4990
Hunter-Lab	70.1741, 5.3808, 6.3995

Details

The XYZ color **50.3939, 49.2441, 50.5651** is a light color, and the websafe version is hex **CCCCCC**. A complement of this color would be **52.2777, 58.7865, 66.9870**, and the grayscale version is **47.9206, 50.4162, 54.9032**.

A 20% lighter version of the original color is **86.5215, 87.3653, 92.4238**, and **24.4345, 23.4127, 23.6533** is the 20% darker color. If you saturate the color by 10%, you get **44.6218, 40.7423, 39.2606**, and if you desaturate by 10%, it is **57.0856, 59.1155, 63.6214**.

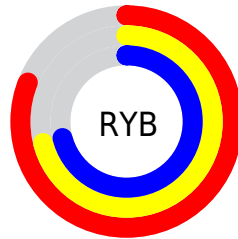
Distribution



Red (81%)

Green (71%)

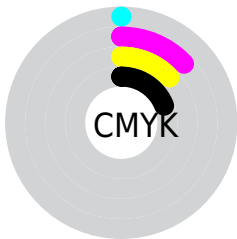
Blue (71%)



Red (81%)

Yellow (71%)

Blue (71%)

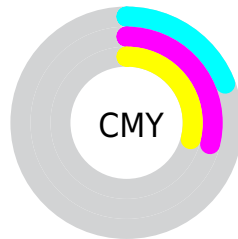


Cyan (0%)

Magenta (13%)

Yellow (13%)

Black (19%)



Cyan (19%)

Magenta (29%)

Yellow (29%)

Brightness & Saturation Gradients

These gradients show how the XYZ color 50.3939, 49.2441, 50.5651 changes by changing the brightness by 10 percent. The first figure shows a shift by +10% for each color and the second figure -10%.

Similar to the brightness gradients but the following saturation gradients show a change of the XYZ color 50.3939, 49.2441, 50.5651 by changing the saturation by 10% instead.

■ 50.3939, 49.2441,
50.5651

■ 50.3939, 49.2441,
50.5651

378.6309,
383.7025, 405.6699

■ 35.9456, 34.8132,
35.4883

■ 89.9466, 89.0539,
92.4165

■ 24.5621, 23.5190,
23.7527

115.7816,
115.2015, 120.0282

■ 15.8781, 14.9772,
14.9398

146.1429,
146.0235, 152.6552

■ 9.5282, 8.8034,
8.6310

181.3958,
181.9042, 190.7162

■ 5.1471, 4.6132,
4.4078

221.9057,
223.2281, 234.6296

■ 2.3695, 2.0221,
1.8516

268.0380,

■ 0.8299, 0.6203,

270.3795, 284.8140

0.4617

320.1579,
323.7428, 341.6879

■ 0.0000, 0.0000,
0.0000

■ 50.3939, 49.2441,
50.5651

■ 50.3939, 49.2441,
50.5651

■ 44.6218, 40.7423,
39.2606

■ 57.0856, 59.1155,
63.6214

■ 39.7252, 33.5434,
29.6305

■ 64.7302, 70.4063,
78.4964

■ 35.6626, 27.5852,
21.5962

■ 73.3646, 83.1719,
95.2571

■ 32.3876, 22.7974,
15.0714

■ 79.5424, 92.0055,
108.1743

■ 29.8490, 19.1031,
9.9619

■ 27.9898, 16.4160,
6.1628

■ 26.7446, 14.6370,
3.5547

■ 26.0351, 13.6467,
1.9965

■ 25.7743, 13.2823,
1.4247

Harmonies

Analogous

The Analogous color harmony consists of three colors that are next to each other on the color wheel.



50.4722, 49.2441, 55.9689



50.3939, 49.2441, 50.5651



49.3377, 49.2441, 46.2728

Triad

The Triadic color harmony groups three colors that are evenly spaced from another and form a triangle on the color wheel.



50.3939, 49.2441, 50.5651



44.1645, 49.2441, 46.8032



46.0007, 49.2441, 64.5236

Complementary

The Complementary color scheme is a pair of colors which are on the opposite of each other on the color wheel.



50.3939, 49.2441, 50.5651



52.2777, 58.7865, 66.9870

Split Complementary

Split-complementary colors differ from the complementary color scheme. The scheme consists of three colors, the original color and two neighbors of the complement color.



44.3606, 49.2441, 61.7030



50.3939, 49.2441, 50.5651



43.3200, 49.2441, 51.3347

Square

The Square scheme is like the rectangle color scheme, but the four colors are evenly spaced on the color wheel.



50.3939, 49.2441, 50.5651



45.7264, 49.2441, 44.2042



43.3907, 49.2441, 56.7923



47.9005, 49.2441, 64.2825

Rectangle

The Rectangle color scheme consists of four colors that form a rectangle on the color wheel.



50.3939, 49.2441, 50.5651



48.2370, 49.2441, 44.5079



43.3907, 49.2441, 56.7923



45.4017, 49.2441, 63.8945

Sweetspot

The Sweet Spot groups the original color and five complimentary colors.



50.3953, 49.2463, 50.5661



90.3403, 93.0472, 99.7260



52.9417, 50.2215, 65.9355



19.1530, 19.6450, 20.9876



0.0000, 0.0000, 0.0000



20.3446, 21.4041, 23.3091

Same Dimension

The Same Dimension uses a secret algorithm to generate beautiful new colors.



50.3953, 49.2463, 50.5661



77.6939, 74.3971, 75.0317



52.8544, 54.3276, 50.8832



11.8262, 11.8152, 12.3604



16.2464, 8.3714, 0.9379



0.9147, 0.4706, 0.0859

Inverse Universe

The Inverse Universe completely reimagines the original color for something new.



50.3953, 49.2463, 50.5661



77.6939, 74.3971, 75.0317



49.5683, 53.1732, 66.6830



11.8262, 11.8152, 12.3604



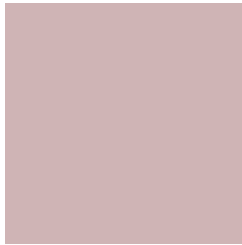
16.2464, 8.3714, 0.9379



0.9147, 0.4706, 0.0859

Previews

White Background



This preview shows how the XYZ color 50.3939, 49.2441, 50.5651 looks on a white background.

Color Contrast Check

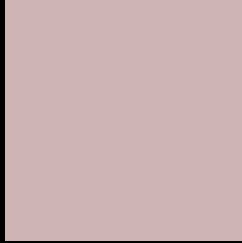
Large Text (above 18pt) WCAG AA × Fail

Any Text WCAG AA × Fail

Large Text (above 18pt) WCAG AAA × Fail

Any Text WCAG AAA × Fail

Black Background



This preview shows how the XYZ color 50.3939, 49.2441, 50.5651 looks on a black background.

Color Contrast Check

Large Text (above 18pt) WCAG AA ✓ Pass

Any Text WCAG AA ✓ Pass

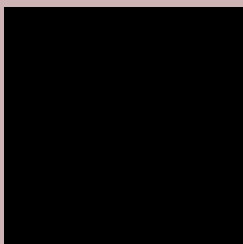
Large Text (above 18pt) WCAG AAA ✓ Pass

Any Text WCAG AAA ✓ Pass

If you want to check with other color combinations, try the [Color Contrast Checker](#).

XYZ 50.3939, 49.2441, 50.5651

Background



This preview shows how black text looks on a background with the XYZ color 50.3939, 49.2441, 50.5651.



This preview shows how white text looks on a background with the XYZ color 50.3939, 49.2441,

Color Blindness Simulation

Color vision deficiency is a very complex topic, and I could not describe the different causes any better than Wikipedia does, so if you want to learn more, you should check out their [article about color blindness](#).

Dichromacy



Original Color

50.3939, 49.2441, 50.5651

Protanopia

47.4458, 49.5257, 52.4061

Deuteranopia

50.1153, 49.1005, 50.5520



Tritanopia

51.4472, 49.0565, 56.6265

Trichromacy



Original Color

50.3939, 49.2441, 50.5651

Protanomaly

48.4527, 49.4356, 51.7880

Deuteranomaly

50.1153, 49.1005, 50.5520

Tritanomaly

51.2096, 49.2809, 54.3901

Monochromacy



Original Color

50.3939, 49.2441, 50.5651

Achromatopsia

47.7994, 50.2886, 54.7643

Achromatomaly

48.6116, 49.8028, 52.9497

CSS Examples

Text

The CSS property to change the color of the text to XYZ 50.3939, 49.2441, 50.5651 is called "color". The color property can be set on classes, ids or directly on the HTML element.

This example shows how text in the color `rgb(207, 180, 181)` looks like.

```
.text, #text, p{  
    color:rgb(207, 180, 181)  
}
```

If you want to add a text shadow in that color use the text-shadow property, you can generate a text shadow directly with our [CSS Text Shadow Generator](#).

Here you see how black text with a 4 pixel rgb(207, 180, 181) colored shadow looks like.

```
.shadow{ text-shadow: 4px 4px 2px rgb(207, 180, 181) }
```

Border

The CSS property to change the border of an element to XYZ 50.3939, 49.2441, 50.5651 is called "border". The border property can be set on classes, ids or directly on the HTML element.

This example shows the color as border, it can be applied via the CSS property "border" or "border-color".

```
.border, #border, table{ border:4px solid rgb(207, 180, 181) }
```


If only the border color should be changed use the property `border-color`.

```
.border{ border-color:rgb(207, 180, 181) }
```

If you want to add a box shadow in that color use:

Here you see how a box with a 4 pixel `rgb(207, 180, 181)` colored shadow looks like.

```
.boxshadow{ -moz-box-shadow:4px 4px 4px  
4px rgb(207, 180, 181); -webkit-box-  
shadow:4px 4px 4px 4px rgb(207, 180, 181);  
box-shadow:4px 4px 4px 4px rgb(207, 180,  
181) }
```

Background

The CSS property to change the background color of an element to XYZ 50.3939, 49.2441, 50.5651 is called "background". The background property can be set on classes, ids or directly on the HTML element.

```
.background, #background, body{  
background: rgb(207, 180, 181) }
```

If only the background color should be changed can be used:

```
.background{ background-color: rgb(207,  
180, 181) }
```

This example shows the color as background, it is applied via the CSS property "background".

To optimize and compress your CSS code, you can use our [online CSS compressor and optimizer](#) based on csstidy. If you want to create a linear or radial gradient as background or border, check our [CSS Gradient Generator](#).

Hey! You found this booklet interesting? Support Converting Colors with the new Membership Option!

The pro membership hides all ads, plus gives you double the colors in the color bucket, and more awesome pro features!

[Learn more, Memberships starting at \\$2.50/m!](#)

**Follow me
on Twitter!**

@ConvertingColor