

# Converting Colors

XYZ(50.4110, 50.3120, 49.3916)

Have a look what the booklet for  
XYZ(50.4110, 50.3120, 49.3916)  
contains.

<b>XYZ(50.4230, 50.2031, 49.1521)</b> .....	3
<b><i>Conversions</i></b> .....	4
<b><i>Details</i></b> .....	6
<b><i>Harmonies</i></b> .....	12
<b><i>Previews</i></b> .....	24
<b><i>Color Blindness Simulation</i></b> .....	28
<b><i>CSS Examples</i></b> .....	31

# Color

**XYZ(50.4230, 50.2031,  
49.1521)**

# Conversions

## Conversions Part 1

Format	Color
Hex	CEB7B2
RGB	206, 183, 178
RGB Percent	81%, 72%, 70%
CMY	0.1922, 0.2823, 0.3020
CMYK	0.00, 0.11, 0.14, 0.19
HSL	11°, 22%, 75%
HSV	11°, 14%, 81%
XYZ	50.4230, 50.2031, 49.1521
YIQ	189.3070, 15.3130, 3.3210

# Conversions

## Conversions Part 2

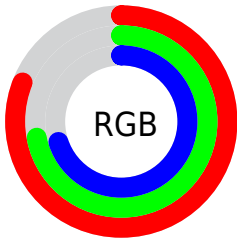
<b>Format</b>	<b>Color</b>
R <sub>Y</sub> B	206, 184, 178
Decimal	13547442
CIE Lab	76.19, 7.38, 5.53
CIE LCh	76, 9.219, 36.870
Yxy	50.2031, 0.3367, 0.3352
Android (android.graphics.Color)	4291737522 (0xFFCEB7B2)
YUV	189.3070, -5.5744, 14.6398
Hunter-Lab	70.8541, 3.0339, 8.4679

# Details

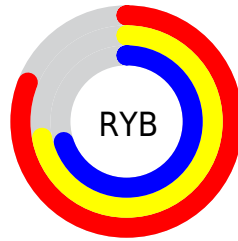
The XYZ color **50.4230, 50.2031, 49.1521** is a light color, and the websafe version is hex **CCCCCC**. A complement of this color would be **50.3872, 55.6936, 66.4874**, and the grayscale version is **48.5714, 51.1009, 55.6489**.

A 20% lighter version of the original color is **86.9578, 88.9335, 90.4246**, and **24.6332, 24.1213, 22.7596** is the 20% darker color. If you saturate the color by 10%, you get **45.2259, 42.8737, 37.9700**, and if you desaturate by 10%, it is **56.3531, 58.5002, 62.1121**.

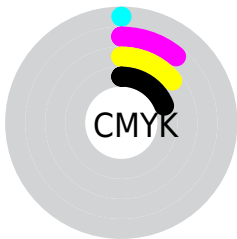
# Distribution



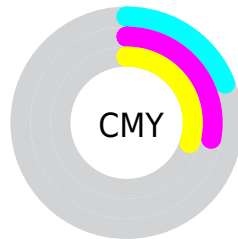
- Red (81%)
- Green (72%)
- Blue (70%)



- Red (81%)
- Yellow (72%)
- Blue (70%)



- Cyan (0%)
- Magenta (11%)
- Yellow (14%)
- Black (19%)




- Cyan (19%)
- Magenta (28%)
- Yellow (30%)


# Brightness & Saturation Gradients

These gradients show how the XYZ color 50.4230, 50.2031, 49.1521 changes by changing the brightness by 10 percent. The first figure shows a shift by +10% for each color and the second figure -10%.


Similar to the brightness gradients but the following saturation gradients show a change of the XYZ color 50.4230, 50.2031, 49.1521 by changing the saturation by 10% instead.





 50.4230, 50.2031,  
49.1521

 50.4230, 50.2031,  
49.1521


378.7425,  
387.4597, 399.9805

 35.9688, 35.5748,  
34.3737

 89.9894, 90.4757,  
90.3006

 24.5801, 24.1060,  
22.9011


115.8322,  
116.8888, 117.5079

 15.8915, 15.4123,  
14.3159


146.2021,  
147.9990, 149.6951

 9.5378, 9.1092,  
8.1995

181.4642,  
184.1907, 187.2809

 5.1535, 4.8125,  
4.1332

221.9839,  
225.8481, 230.6838

 2.3733, 2.1377,  
1.6987

268.1266,

 0.8318, 0.6857,

273.3559, 280.3223

0.3599

320.2577,  
327.0982, 336.6150

■ 0.0000, 0.0000,  
0.0000

■ 50.4230, 50.2031,  
49.1521

■ 50.4230, 50.2031,  
49.1521

■ 45.2259, 42.8737,  
37.9700

■ 56.3531, 58.5002,  
62.1121

■ 40.7289, 36.4702,  
28.4850

■ 63.0389, 67.7917,  
76.9197

■ 36.9029, 30.9575,  
20.6148

■ 70.5076, 78.1114,  
93.6446

■ 33.7152, 26.2958,  
14.2689

■ 77.9013, 89.1369,  
107.7070

■ 31.1301, 22.4423,  
9.3478

■ 79.2639, 91.8620,  
108.1612

■ 29.1083, 19.3502,  
5.7404

■ 27.6056, 16.9680,  
3.3185

■ 26.5707, 15.2372,  
1.9282

■ 26.1096, 14.4334,  
1.4098

# Harmonies

## Analogous

The Analogous color harmony consists of three colors that are next to each other on the color wheel.



51.0903, 50.2031, 53.5328



50.4230, 50.2031, 49.1521



49.0330, 50.2031, 46.3741

# Triad

The Triadic color harmony groups three colors that are evenly spaced from another and form a triangle on the color wheel.



50.4230, 50.2031, 49.1521



44.7271, 50.2031, 51.0109



48.1149, 50.2031, 64.6598

# Complementary

The Complementary color scheme is a pair of colors which are on the opposite of each other on the color wheel.



50.4230, 50.2031, 49.1521



50.3872, 55.6936, 66.4874

# Split Complementary

Split-complementary colors differ from the complementary color scheme. The scheme consists of three colors, the original color and two neighbors of the complement color.



46.4238, 50.2031, 63.8842



50.4230, 50.2031, 49.1521



44.4947, 50.2031, 55.8083

# Square

The Square scheme is like the rectangle color scheme, but the four colors are evenly spaced on the color wheel.



50.4230, 50.2031, 49.1521



45.7515, 50.2031, 47.4012



45.1087, 50.2031, 60.5704



49.7371, 50.2031, 62.6302



# Rectangle

The Rectangle color scheme consists of four colors that form a rectangle on the color wheel.



50.4230, 50.2031, 49.1521



47.8981, 50.2031, 45.7049



45.1087, 50.2031, 60.5704



47.5355, 50.2031, 64.7204

# Sweetspot

The Sweet Spot groups the original color and five complimentary colors.



50.4244, 50.2053, 49.1532



90.8364, 94.1314, 99.6078



51.9566, 49.1961, 62.2222



19.2779, 19.9181, 20.9579



0.0000, 0.0000, 0.0000



20.3446, 21.4041, 23.3091

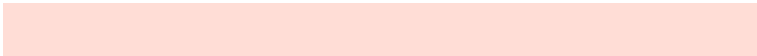


# Same Dimension

The Same Dimension uses a secret algorithm to generate beautiful new colors.



50.4244, 50.2053, 49.1532



79.3894, 78.0977, 74.6424



53.3808, 56.1182, 50.1386



11.3718, 11.5325, 11.7061



16.1282, 8.9894, 0.8851



0.8828, 0.5652, 0.0626

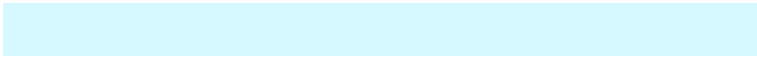


# Inverse Universe

The Inverse Universe completely reimagines the original color for something new.



50.3872, 55.6936, 66.4874



79.3180, 88.5024, 107.5099



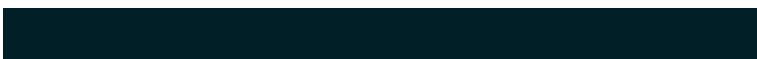
47.3425, 49.6042, 65.4725



11.3661, 12.3727, 14.3595



15.6826, 20.3892, 39.0652

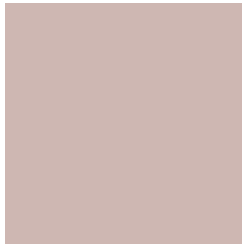


0.8548, 1.1433, 2.0306



# Previews

## White Background



This preview shows how the XYZ color 50.4230, 50.2031, 49.1521 looks on a white background.

## Color Contrast Check

Large Text (above 18pt) WCAG AA × Fail

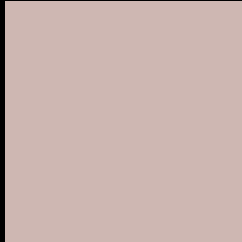
Any Text WCAG AA × Fail

Large Text (above 18pt) WCAG AAA × Fail

Any Text WCAG AAA × Fail



# Black Background



This preview shows how the XYZ color 50.4230, 50.2031, 49.1521 looks on a black background.

## Color Contrast Check

Large Text (above 18pt) WCAG AA ✓ Pass

Any Text WCAG AA ✓ Pass

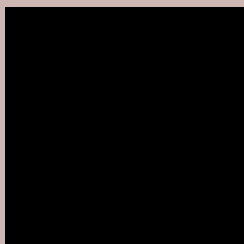
Large Text (above 18pt) WCAG AAA ✓ Pass

Any Text WCAG AAA ✓ Pass

If you want to check with other color combinations, try the [Color Contrast Checker](#).

# XYZ 50.4230, 50.2031, 49.1521

## Background



This preview shows how black text looks on a background with the XYZ color 50.4230, 50.2031, 49.1521.



This preview shows how white text looks on a background with the XYZ color 50.4230, 50.2031,



# Color Blindness Simulation

Color vision deficiency is a very complex topic, and I could not describe the different causes any better than Wikipedia does, so if you want to learn more, you should check out their [article about color blindness](#).

## Dichromacy



### Original Color

50.4230, 50.2031, 49.1521

### Protanopia

48.0009, 50.1734, 50.3345

### Deuteranopia

51.3422, 50.3719, 49.1362



## Tritanopia

52.1840, 49.9925, 58.5289

# Trichromacy



## Original Color

50.4230, 50.2031, 49.1521

## Protanomaly

48.9843, 50.3783, 49.7901

## Deuteranomaly

51.0583, 50.2256, 49.1229

## Tritanomaly

51.4413, 49.9873, 55.0814

# Monochromacy



## Original Color

50.4230, 50.2031, 49.1521

## Achromatopsia

48.3692, 50.8881, 55.4172

## Achromatomaly

49.0330, 50.6455, 53.0902

# CSS Examples

## Text

The CSS property to change the color of the text to XYZ 50.4230, 50.2031, 49.1521 is called "color". The color property can be set on classes, ids or directly on the HTML element.

This example shows how text in the color `rgb(206, 183, 178)` looks like.

```
.text, #text, p{  
    color:rgb(206, 183, 178)  
}
```

If you want to add a text shadow in that color use the text-shadow property, you can generate a text shadow directly with our [CSS Text Shadow Generator](#).

Here you see how black text with a 4 pixel rgb(206, 183, 178) colored shadow looks like.

```
.shadow{ text-shadow: 4px 4px 2px rgb(206, 183, 178) }
```

## Border

The CSS property to change the border of an element to XYZ 50.4230, 50.2031, 49.1521 is called "border". The border property can be set on classes, ids or directly on the HTML element.

This example shows the color as border, it can be applied via the CSS property "border" or "border-color".

```
.border, #border, table{ border:4px solid rgb(206, 183, 178) }
```



If only the border color should be changed use the property `border-color`.

```
.border{ border-color:rgb(206, 183, 178) }
```

If you want to add a box shadow in that color use:

Here you see how a box with a 4 pixel `rgb(206, 183, 178)` colored shadow looks like.

```
.boxshadow{ -moz-box-shadow:4px 4px 4px  
4px rgb(206, 183, 178); -webkit-box-  
shadow:4px 4px 4px 4px rgb(206, 183, 178);  
box-shadow:4px 4px 4px 4px rgb(206, 183,  
178) }
```

# Background

The CSS property to change the background color of an element to XYZ 50.4230, 50.2031, 49.1521 is called "background". The background property can be set on classes, ids or directly on the HTML element.

```
.background, #background, body{  
background: rgb(206, 183, 178) }
```

If only the background color should be changed can be used:

```
.background{ background-color: rgb(206,  
183, 178) }
```

This example shows the color as background, it is applied via the CSS property "background".

To optimize and compress your CSS code, you can use our [online CSS compressor and optimizer](#) based on csstidy. If you want to create a linear or radial gradient as background or border, check our [CSS Gradient Generator](#).

Hey! You found this booklet interesting? Support Converting Colors with the new Membership Option!

The pro membership hides all ads, plus gives you double the colors in the color bucket, and more awesome pro features!

**[Learn more, Memberships starting at \\$2.50/m!](#)**

**Follow me  
on Twitter!**

@ConvertingColor