

Converting Colors

XYZ(50.4130, 47.6823, 38.5836)

Have a look what the booklet for
XYZ(50.4130, 47.6823, 38.5836)
contains.

XYZ(50.4353, 47.7665, 38.4599)	3
<i>Conversions</i>	4
<i>Details</i>	6
<i>Harmonies</i>	12
<i>Previews</i>	24
<i>Color Blindness Simulation</i>	28
<i>CSS Examples</i>	31

Color

**XYZ(50.4353, 47.7665,
38.4599)**

Conversions

Conversions Part 1

Format	Color
Hex	DBAE9D
RGB	219, 174, 157
RGB Percent	86%, 68%, 62%
CMY	0.1412, 0.3176, 0.3843
CMYK	0.00, 0.21, 0.28, 0.14
HSL	16°, 46%, 74%
HSV	16°, 28%, 86%
XYZ	50.4353, 47.7665, 38.4599
YIQ	185.5170, 32.2770, 4.2530

Conversions

Conversions Part 2

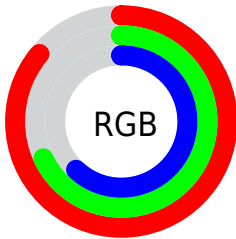
Format	Color
R _Y B	219, 180, 157
Decimal	14397085
CIE Lab	74.68, 13.94, 14.96
CIE LCh	75, 20.453, 47.019
Yxy	47.7665, 0.3691, 0.3495
Android (android.graphics.Color)	4292587165 (0xFFDBAE9D)
YUV	185.5170, -14.0589, 29.3646
Hunter-Lab	69.1133, 9.3117, 15.3859

Details

The XYZ color **50.4353, 47.7665, 38.4599** is a light color, and the websafe version is hex **CC9999**. A complement of this color would be **47.8108, 54.5220, 75.0220**, and the grayscale version is **46.4666, 48.8864, 53.2373**.

A 20% lighter version of the original color is **81.4205, 82.6071, 73.9408**, and **24.6653, 22.7462, 16.7261** is the 20% darker color. If you saturate the color by 10%, you get **45.8398, 41.3041, 28.5156**, and if you desaturate by 10%, it is **55.7319, 55.0940, 50.2924**.

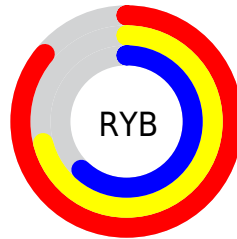
Distribution



Red (86%)

Green (68%)

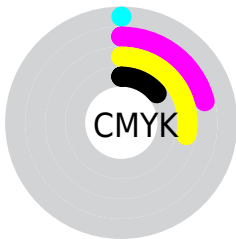
Blue (62%)



Red (86%)

Yellow (71%)

Blue (62%)

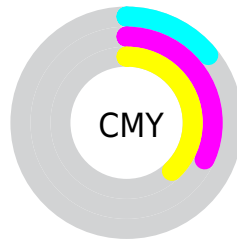


Cyan (0%)

Magenta (21%)

Yellow (28%)

Black (14%)



Cyan (14%)

Magenta (32%)


Yellow (38%)

Brightness & Saturation Gradients


These gradients show how the XYZ color 50.4353, 47.7665, 38.4599 changes by changing the brightness by 10 percent. The first figure shows a shift by +10% for each color and the second figure -10%.

Similar to the brightness gradients but the following saturation gradients show a change of the XYZ color 50.4353, 47.7665, 38.4599 by changing the saturation by 10% instead.

 50.4353, 47.7665,
38.4599


 50.4353, 47.7665,
38.4599


378.7897,
377.8658, 354.9459

 35.9786, 33.6420,
26.0352

 90.0075, 86.8566,
74.0237

 24.5877, 22.6187,
16.6240


 115.8537,
112.5911, 98.0000

 15.8972, 14.3122,
9.8077


146.2271,
142.9643, 126.6638

 9.5419, 8.3381,
5.1677

181.4930,
178.3607, 160.4338

 5.1562, 4.3121,
2.2855

222.0169,
219.1647, 199.7284

 2.3749, 1.8496,
0.7231

268.1641,

 0.8326, 0.5178,

265.7606, 244.9663

0.0000

320.2999,
318.5328, 296.5659

■ 0.0000, 0.0000,
0.0000

■ 50.4353, 47.7665,
38.4599

■ 50.4353, 47.7665,
38.4599

■ 45.8398, 41.3041,
28.5156

■ 55.7319, 55.0940,
50.2924

■ 41.9110, 35.6679,
20.3579

■ 61.7542, 63.3107,
64.1013

■ 38.6173, 30.8255,
13.8804

■ 68.5306, 72.4479,
79.9731

■ 35.9228, 26.7399,
8.9637

■ 76.0866, 82.5332,
97.9879

■ 33.7874, 23.3707,
5.4728

■ 82.5385, 92.8301,
108.1755

■ 32.1659, 20.6736,
3.2491

■ 83.0235, 93.8001,
108.3372

■ 30.9975, 18.5956,
2.0618

■ 30.8327, 18.2986,
1.9069

Harmonies

Analogous

The Analogous color harmony consists of three colors that are next to each other on the color wheel.



52.5627, 47.7665, 46.2610



50.4353, 47.7665, 38.4599



47.0206, 47.7665, 34.5467

Triad

The Triadic color harmony groups three colors that are evenly spaced from another and form a triangle on the color wheel.



50.4353, 47.7665, 38.4599



38.8034, 47.7665, 47.5576



47.5188, 47.7665, 74.0719

Complementary

The Complementary color scheme is a pair of colors which are on the opposite of each other on the color wheel.



50.4353, 47.7665, 38.4599



47.8108, 54.5220, 75.0220

Split Complementary

Split-complementary colors differ from the complementary color scheme. The scheme consists of three colors, the original color and two neighbors of the complement color.



43.8183, 47.7665, 74.5440



50.4353, 47.7665, 38.4599



38.9206, 47.7665, 58.2157

Square

The Square scheme is like the rectangle color scheme, but the four colors are evenly spaced on the color wheel.



50.4353, 47.7665, 38.4599



40.3834, 47.7665, 39.2974



40.7127, 47.7665, 68.4178



50.8171, 47.7665, 67.2043

Rectangle

The Rectangle color scheme consists of four colors that form a rectangle on the color wheel.



50.4353, 47.7665, 38.4599



44.5353, 47.7665, 34.2667



40.7127, 47.7665, 68.4178



46.2771, 47.7665, 75.0137

Sweetspot

The Sweet Spot groups the original color and five complimentary colors.



50.4366, 47.7687, 38.4609



87.3952, 89.6701, 90.9964



51.9868, 43.4610, 61.8165



18.4147, 18.7977, 18.8021



0.0000, 0.0000, 0.0000



20.3446, 21.4041, 23.3091

Same Dimension

The Same Dimension uses a secret algorithm to generate beautiful new colors.



50.4366, 47.7687, 38.4609



67.2028, 61.8322, 45.5853



57.0195, 60.9345, 40.6552



13.3452, 13.6298, 13.6530



18.3611, 11.0078, 1.1570



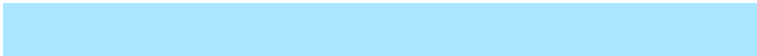
1.2609, 0.8560, 0.0988

Inverse Universe

The Inverse Universe completely reimagines the original color for something new.



47.8108, 54.5220, 75.0220



62.9003, 72.8536, 105.3547



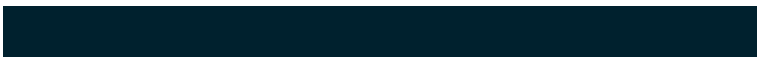
41.3426, 41.5856, 72.8659



13.1272, 14.1942, 16.7000



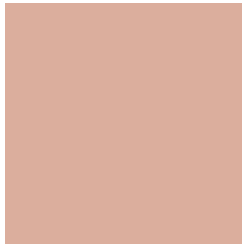
15.0223, 17.9141, 42.4044



1.0437, 1.3015, 2.7707

Previews

White Background



This preview shows how the XYZ color 50.4353, 47.7665, 38.4599 looks on a white background.

Color Contrast Check

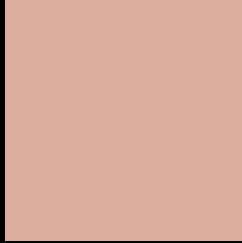
Large Text (above 18pt) WCAG AA × Fail

Any Text WCAG AA × Fail

Large Text (above 18pt) WCAG AAA × Fail

Any Text WCAG AAA × Fail

Black Background



This preview shows how the XYZ color 50.4353, 47.7665, 38.4599 looks on a black background.

Color Contrast Check

Large Text (above 18pt) WCAG AA ✓ Pass

Any Text WCAG AA ✓ Pass

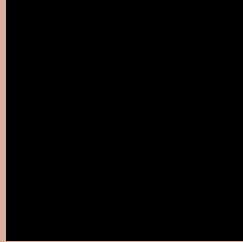
Large Text (above 18pt) WCAG AAA ✓ Pass

Any Text WCAG AAA ✓ Pass

If you want to check with other color combinations, try the [Color Contrast Checker](#).

XYZ 50.4353, 47.7665, 38.4599

Background



This preview shows how black text looks on a background with the XYZ color 50.4353, 47.7665, 38.4599.



This preview shows how white text looks on a background with the XYZ color 50.4353, 47.7665,

38.4599.

Color Blindness Simulation

Color vision deficiency is a very complex topic, and I could not describe the different causes any better than Wikipedia does, so if you want to learn more, you should check out their [article about color blindness](#).

Dichromacy



Original Color

50.4353, 47.7665, 38.4599

Protanopia

45.1933, 47.6821, 41.0040

Deuteranopia

48.8743, 47.8416, 38.1109



Tritanopia

53.0462, 47.6979, 51.2105

Trichromacy



Original Color

50.4353, 47.7665, 38.4599

Protanomaly

47.0235, 47.7371, 39.9935

Deuteranomaly

49.5504, 47.8980, 38.0861

Tritanomaly

52.0217, 47.5540, 46.4814

Monochromacy



Original Color

50.4353, 47.7665, 38.4599

Achromatopsia

46.6715, 49.1021, 53.4722

Achromatomaly

47.7545, 48.5568, 47.4129

CSS Examples

Text

The CSS property to change the color of the text to XYZ 50.4353, 47.7665, 38.4599 is called "color". The color property can be set on classes, ids or directly on the HTML element.

This example shows how text in the color `rgb(219, 174, 157)` looks like.

```
.text, #text, p{  
    color:rgb(219, 174, 157)  
}
```

If you want to add a text shadow in that color use the text-shadow property, you can generate a text shadow directly with our [CSS Text Shadow Generator](#).

Here you see how black text with a 4 pixel rgb(219, 174, 157) colored shadow looks like.

```
.shadow{ text-shadow: 4px 4px 2px rgb(219, 174, 157) }
```

Border

The CSS property to change the border of an element to XYZ 50.4353, 47.7665, 38.4599 is called "border". The border property can be set on classes, ids or directly on the HTML element.

This example shows the color as border, it can be applied via the CSS property "border" or "border-color".

```
.border, #border, table{ border:4px solid rgb(219, 174, 157) }
```


If only the border color should be changed use the property `border-color`.

```
.border{ border-color:rgb(219, 174, 157) }
```

If you want to add a box shadow in that color use:

Here you see how a box with a 4 pixel `rgb(219, 174, 157)` colored shadow looks like.

```
.boxshadow{ -moz-box-shadow:4px 4px 4px  
4px rgb(219, 174, 157); -webkit-box-  
shadow:4px 4px 4px 4px rgb(219, 174, 157);  
box-shadow:4px 4px 4px 4px rgb(219, 174,  
157) }
```

Background

The CSS property to change the background color of an element to XYZ 50.4353, 47.7665, 38.4599 is called "background". The background property can be set on classes, ids or directly on the HTML element.

```
.background, #background, body{  
background: rgb(219, 174, 157) }
```

If only the background color should be changed can be used:

```
.background{ background-color: rgb(219,  
174, 157) }
```

This example shows the color as background, it is applied via the CSS property "background".

To optimize and compress your CSS code, you can use our [online CSS compressor and optimizer](#) based on csstidy. If you want to create a linear or radial gradient as background or border, check our [CSS Gradient Generator](#).

Hey! You found this booklet interesting? Support Converting Colors with the new Membership Option!

The pro membership hides all ads, plus gives you double the colors in the color bucket, and more awesome pro features!

[Learn more, Memberships starting at \\$2.50/m!](#)

**Follow me
on Twitter!**

@ConvertingColor