

Converting Colors

XYZ(50.4288, 48.3532, 52.6363)

Have a look what the booklet for
XYZ(50.4288, 48.3532, 52.6363)
contains.

XYZ(50.4915, 48.3570, 52.5716)	3
<i>Conversions</i>	4
<i>Details</i>	6
<i>Harmonies</i>	12
<i>Previews</i>	24
<i>Color Blindness Simulation</i>	28
<i>CSS Examples</i>	31

Color

**XYZ(50.4915, 48.3570,
52.5716)**

Conversions

Conversions Part 1

Format	Color
Hex	D0B1B9
RGB	208, 177, 185
RGB Percent	82%, 69%, 73%
CMY	0.1843, 0.3059, 0.2745
CMYK	0.00, 0.15, 0.11, 0.18
HSL	345°, 25%, 75%
HSV	345°, 15%, 82%
XYZ	50.4915, 48.3570, 52.5716
YIQ	187.1810, 15.9080, 9.0600

Conversions

Conversions Part 2

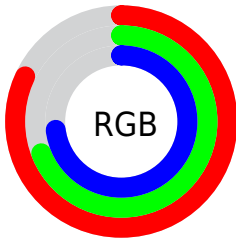
Format	Color
R_{YB}	208, 177, 185
Decimal	13676985
CIE _{Lab}	75.05, 12.49, 0.08
CIE _{LCh}	75, 12.491, 0.369
Yxy	48.3570, 0.3335, 0.3194
Android (android.graphics.Color)	4291867065 (0xFFD0B1B9)
YUV	187.1810, -1.0752, 18.2583
Hunter-Lab	69.5392, 7.9129, 3.8542

Details

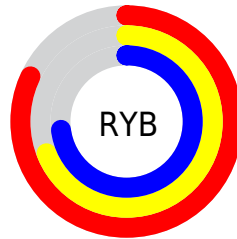
The XYZ color **50.4915, 48.3570, 52.5716** is a light color, and the websafe version is hex **CC9999**. A complement of this color would be **51.1145, 58.6301, 63.2691**, and the grayscale version is **47.3370, 49.8022, 54.2346**.

A 20% lighter version of the original color is **86.2561, 85.8887, 95.2511**, and **24.5094, 22.8536, 24.9492** is the 20% darker color. If you saturate the color by 10%, you get **45.1503, 40.1417, 43.1843**, and if you desaturate by 10%, it is **56.6385, 57.8997, 63.1013**.

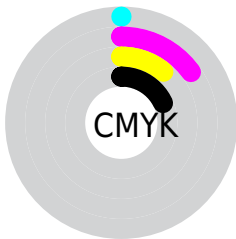
Distribution



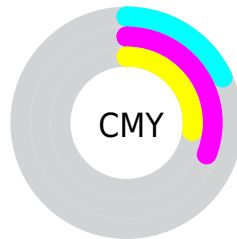
- Red (82%)
- Green (69%)
- Blue (73%)



- Red (82%)
- Yellow (69%)
- Blue (73%)



- Cyan (0%)
- Magenta (15%)
- Yellow (11%)
- Black (18%)





- Cyan (18%)
- Magenta (31%)
- Yellow (27%)

Brightness & Saturation Gradients


These gradients show how the XYZ color 50.4915, 48.3570, 52.5716 changes by changing the brightness by 10 percent. The first figure shows a shift by +10% for each color and the second figure -10%.


Similar to the brightness gradients but the following saturation gradients show a change of the XYZ color 50.4915, 48.3570, 52.5716 by changing the saturation by 10% instead.


 50.4915, 48.3570,
52.5716

 50.4915, 48.3570,
52.5716


379.0052,
380.2054, 413.6589

 36.0235, 34.1097,
37.0755


 90.0902, 87.7357,
95.4088

 24.6225, 22.9779,
24.9697


115.9515,
113.6359, 123.5871

 15.9233, 14.5772,
15.8357


146.3413,
144.1891, 156.8297

 9.5604, 8.5232,
9.2549

181.6250,
179.7799, 195.5554

 5.1685, 4.4315,
4.8087

222.1679,
220.7925, 240.1826

 2.3822, 1.9177,
2.0787

268.3353,

 0.8362, 0.5590,

267.6113, 291.1299

0.6030

320.4926,
320.6209, 348.8159

■ 0.0000, 0.0000,
0.0000

■ 50.4915, 48.3570,
52.5716

■ 50.4915, 48.3570,
52.5716

■ 45.1503, 40.1417,
43.1843

■ 56.6385, 57.8997,
63.1013

■ 40.5770, 33.1887,
34.8974

■ 63.6191, 68.8184,
74.8076

■ 36.7366, 27.4368,
27.6705

■ 71.4647, 81.1673,
87.7267

■ 33.5897, 22.8174,
21.4597

■ 78.5207, 91.6292,
101.3315

■ 31.0932, 19.2548,
16.2179

■ 79.8226, 92.1500,
108.1874

■ 29.1989, 16.6640,
11.8938

■ 27.8515, 14.9465,
8.4312

■ 26.9844, 13.9830,
5.7666

■ 26.6705, 13.6731,
4.6817

Harmonies

Analogous

The Analogous color harmony consists of three colors that are next to each other on the color wheel.



49.8831, 48.3570, 59.1142



50.4915, 48.3570, 52.5716



49.8532, 48.3570, 46.5505

Triad

The Triadic color harmony groups three colors that are evenly spaced from another and form a triangle on the color wheel.



50.4915, 48.3570, 52.5716



43.7787, 48.3570, 42.5360



43.8261, 48.3570, 64.3505

Complementary

The Complementary color scheme is a pair of colors which are on the opposite of each other on the color wheel.



50.4915, 48.3570, 52.5716



51.1145, 58.6301, 63.2691

Split Complementary

Split-complementary colors differ from the complementary color scheme. The scheme consists of three colors, the original color and two neighbors of the complement color.



42.2785, 48.3570, 59.2659



50.4915, 48.3570, 52.5716



42.2518, 48.3570, 46.6798

Square

The Square scheme is like the rectangle color scheme, but the four colors are evenly spaced on the color wheel.



50.4915, 48.3570, 52.5716



45.9336, 48.3570, 41.0578



41.7116, 48.3570, 52.7336



45.9902, 48.3570, 66.2473

Rectangle

The Rectangle color scheme consists of four colors that form a rectangle on the color wheel.



50.4915, 48.3570, 52.5716



48.8183, 48.3570, 43.5537



41.7116, 48.3570, 52.7336



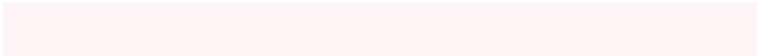
43.2191, 48.3570, 62.9378

Sweetspot

The Sweet Spot groups the original color and five complimentary colors.



50.4929, 48.3592, 52.5726



90.6871, 93.1859, 101.5521



50.8572, 48.2433, 66.3064



19.2404, 19.6800, 21.4479



0.0000, 0.0000, 0.0000



20.3446, 21.4041, 23.3091

Same Dimension

The Same Dimension uses a secret algorithm to generate beautiful new colors.



50.4929, 48.3592, 52.5726



77.1083, 72.1273, 78.2234



51.1388, 50.9642, 48.7394



11.9321, 11.8576, 12.9184



16.6561, 8.5353, 3.0954



0.9642, 0.4904, 0.3462

Inverse Universe

The Inverse Universe completely reimagines the original color for something new.



50.4929, 48.3592, 52.5726



77.1083, 72.1273, 78.2234



50.3506, 55.5672, 67.7467



11.9321, 11.8576, 12.9184



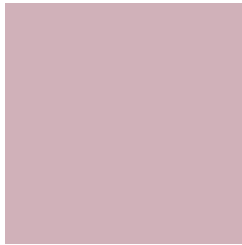
16.6561, 8.5353, 3.0954



0.9642, 0.4904, 0.3462

Previews

White Background



This preview shows how the XYZ color 50.4915, 48.3570, 52.5716 looks on a white background.

Color Contrast Check

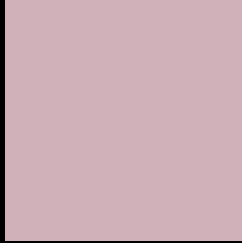
Large Text (above 18pt) WCAG AA × Fail

Any Text WCAG AA × Fail

Large Text (above 18pt) WCAG AAA × Fail

Any Text WCAG AAA × Fail

Black Background



This preview shows how the XYZ color 50.4915, 48.3570, 52.5716 looks on a black background.

Color Contrast Check

Large Text (above 18pt) WCAG AA ✓ Pass

Any Text WCAG AA ✓ Pass

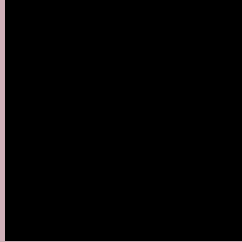
Large Text (above 18pt) WCAG AAA ✓ Pass

Any Text WCAG AAA ✓ Pass

If you want to check with other color combinations, try the [Color Contrast Checker](#).

XYZ 50.4915, 48.3570, 52.5716

Background



This preview shows how black text looks on a background with the XYZ color 50.4915, 48.3570, 52.5716.



This preview shows how white text looks on a background with the XYZ color 50.4915, 48.3570,

Color Blindness Simulation

Color vision deficiency is a very complex topic, and I could not describe the different causes any better than Wikipedia does, so if you want to learn more, you should check out their [article about color blindness](#).

Dichromacy



Original Color

50.4915, 48.3570, 52.5716

Protanopia

46.8193, 48.5199, 55.0417

Deuteranopia

49.5057, 48.4395, 52.6395



Tritanopia

51.1141, 48.3237, 55.3486

Trichromacy



Original Color

50.4915, 48.3570, 52.5716

Protanomaly

48.1067, 48.2807, 54.3606

Deuteranomaly

49.8542, 48.3227, 52.5986

Tritanomaly

50.8969, 48.2368, 54.2050

Monochromacy



Original Color

50.4915, 48.3570, 52.5716

Achromatopsia

47.2335, 49.6933, 54.1160

Achromatomaly

48.3021, 49.0142, 53.3693

CSS Examples

Text

The CSS property to change the color of the text to XYZ 50.4915, 48.3570, 52.5716 is called "color". The color property can be set on classes, ids or directly on the HTML element.

This example shows how text in the color `rgb(208, 177, 185)` looks like.

```
.text, #text, p{  
    color:rgb(208, 177, 185)  
}
```

If you want to add a text shadow in that color use the text-shadow property, you can generate a text shadow directly with our [CSS Text Shadow Generator](#).

Here you see how black text with a 4 pixel rgb(208, 177, 185) colored shadow looks like.

```
.shadow{ text-shadow: 4px 4px 2px rgb(208, 177, 185) }
```

Border

The CSS property to change the border of an element to XYZ 50.4915, 48.3570, 52.5716 is called "border". The border property can be set on classes, ids or directly on the HTML element.

This example shows the color as border, it can be applied via the CSS property "border" or "border-color".

```
.border, #border, table{ border:4px solid rgb(208, 177, 185) }
```


If only the border color should be changed use the property `border-color`.

```
.border{ border-color:rgb(208, 177, 185) }
```

If you want to add a box shadow in that color use:

Here you see how a box with a 4 pixel `rgb(208, 177, 185)` colored shadow looks like.

```
.boxshadow{ -moz-box-shadow:4px 4px 4px  
4px rgb(208, 177, 185); -webkit-box-  
shadow:4px 4px 4px 4px rgb(208, 177, 185);  
box-shadow:4px 4px 4px 4px rgb(208, 177,  
185) }
```

Background

The CSS property to change the background color of an element to XYZ 50.4915, 48.3570, 52.5716 is called "background". The background property can be set on classes, ids or directly on the HTML element.

```
.background, #background, body{  
background: rgb(208, 177, 185) }
```

If only the background color should be changed can be used:

```
.background{ background-color: rgb(208,  
177, 185) }
```

This example shows the color as background, it is applied via the CSS property "background".

To optimize and compress your CSS code, you can use our [online CSS compressor and optimizer](#) based on csstidy. If you want to create a linear or radial gradient as background or border, check our [CSS Gradient Generator](#).

Hey! You found this booklet interesting? Support Converting Colors with the new Membership Option!

The pro membership hides all ads, plus gives you double the colors in the color bucket, and more awesome pro features!

[Learn more, Memberships starting at \\$2.50/m!](#)

**Follow me
on Twitter!**

@ConvertingColor